

**ILLINOIS DEPARTMENT
OF
JUVENILE JUSTICE**

JB Pritzker, Governor
Heidi Mueller, Director

**AFFIRMATIVE
ACTION
PLAN**

FISCAL YEAR 2023

ILLINOIS DEPARTMENT OF JUVENILE JUSTICE

FISCAL YEAR 2023

AFFIRMATIVE ACTION PLAN

TABLE OF CONTENTS

PART I

Certification.....	4
Director's Policy Statement.....	5
Agency Profile.....	6
Affirmative Action Administration.....	7
Table of Organization.....	9
Dissemination of Affirmative Action Policy and Plan.....	11

PART II

Department of Juvenile Justice Work Force.....	13
Summary of Workforce Analysis.....	14
Summary of Workforce Transactions.....	15
Determining Equitable Employment.....	16
Illinois Department of Human Rights State Regional Map.....	18
Geographical Regions.....	19
Underutilization Summary by Region.....	20

PART III

Goals and Timetables.....	22
Performance Measures.....	23

PART IV

Internal Complaint Procedure.....	29
-----------------------------------	----

PART V

Affirmative Action for Persons With Disabilities Policy.....	35
Physical Access for Persons With Disabilities.....	36
Recruitment of Applicants With Disabilities.....	36
Availability Analysis.....	37
Numerical Goal for Persons With Disabilities.....	37
Reasonable Accommodations.....	38

PART VI

Applicable EEO Laws.....	50
--------------------------	----

PART VII

Availability Analysis.....	53
Facilities by Region.....	57
Position Titles by EEO Job Categories.....	58
Exit Interview.....	60
Hiring and Promotion Monitor.....	63
Summary of Workforce Transactions by EEO Category.....	66
Summary of Workforce Analysis by Region.....	74

PART I

**EQUAL EMPLOYMENT OPPORTUNITY/AFFIRMATIVE ACTION
PROGRAM CERTIFICATION**

NAME OF AGENCY: Illinois Department of Juvenile Justice

MAIN ADDRESS: 2715 West Monroe, Springfield, IL 62704

TELEPHONE NUMBER: (217) 557-1030

TTY / NEXTALK: (800) 526-0844

CHIEF EXECUTIVE OFFICER: Heidi Mueller

EEO OFFICER: Jim Crowley

ADA COORDINATOR: NeAngela Dixon

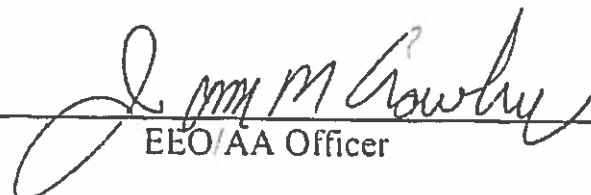
This is to certify that the attached document represents the Equal Employment Opportunity / Affirmative Action Program of this agency.



Chief Executive Officer

8/30/2022

Date



EEO/AA Officer

8/30/2022

Date

AFFIRMATIVE ACTION POLICY STATEMENT

The Illinois Department of Juvenile Justice provides equal treatment and equal opportunity to all persons. The Affirmative Action Plan reaffirms the Department's policy of equal opportunity through affirmative action. The Department's equal employment opportunity goal is to attain a work force that reflects the available labor force and to employ minorities, females and persons with disabilities at all levels within the Department. The agency is committed to undertaking affirmative action to correct underutilization of minorities, females and persons with disabilities in the work force. The Department has developed and implemented a program for recruitment of a diverse work force.

Discrimination against or harassment of employees, clients and applicants based on hiring, training, promotion, pregnancy, race, color, sex, religion, age, arrest record, national origin or ancestry, physical or mental disability, marital status, military status, pregnancy, sexual orientation, order of protection status, citizenship status or unfavorable discharge from military service will not be tolerated. The Department is committed to providing a workplace free from sexual harassment and has implemented sexual harassment policies and prevention programs. The Department promptly, thoroughly and impartially investigates complaints and takes appropriate corrective action when it is determined that discrimination or harassment has occurred. The Department also provides reasonable accommodations to individuals with disabilities.

Retaliation against any employee, client or applicant who files a complaint or participates in the investigation of a complaint of discrimination or harassment is prohibited. Retaliatory conduct will be treated as seriously as incidents of discrimination or harassment. Employees who engage in retaliation will be disciplined up to and including discharge.

Employees or applicants who feel they have been discriminated against, retaliated against or harassed are to report the incident to their supervisor, to a person higher in the chain of command or directly to the Office of Affirmative Action.

This policy is applicable to all employees. It is expected that the executive staff members, wardens, superintendents, supervisors and program managers are responsible for providing leadership in these matters and their support in implementing the Affirmative Action Plan. Compliance with this policy is also required of those who conduct business or enter into contractual agreements with the Department. Through cooperation and mutual effort, the Illinois Department of Juvenile Justice can be a model of equal employment opportunity.



Heidi Mueller, Director

AGENCY PROFILE

MISSION OF THE DEPARTMENT OF JUVENILE JUSTICE

Building youth skills and strengthening families to promote community safety and positive youth outcomes.

Effective July 1, 2006, per 730 ILCS 5/3-2.5-1, the rights, powers, duties and functions that were exercised by the Juvenile Division of the Department of Corrections were transferred to the Department of Juvenile Justice. Personnel employed by the Juvenile Division of the Department of Corrections were transferred to the Department of Juvenile Justice.

The Department accepts juveniles committed to it by the courts of this State for care, custody, treatment, and rehabilitation. The Department identifies the need for and recommends the funding and implementation of an appropriate mix of programs and services within the juvenile justice continuum, including but not limited to prevention, diversion, nonresidential and residential commitment programs, day treatment, and conditional release programs and services, with the support of educational, vocational, alcohol, drug abuse, and mental health services where appropriate. The Department establishes and provides transitional and post-release treatment programs for juveniles committed to the Department.

The Department operates 5 youth centers to meet the needs of the youth committed to its care and supervises persons released on parole or mandatory supervised release. At the end of FY22, the Department has 754 employees. Offices and facilities are located throughout the State. The central office is in Springfield, Illinois.

SPECIAL PROBLEMS

1. Some Department facilities are in areas with small minority populations. Affirmative recruitment is needed in these areas to attract minority applicants.
2. A decision by the Illinois Supreme Court held that the Veterans Preference is absolute; virtually eliminating the ability of state agencies to hire anyone other than a veteran if a veteran appears on the CMS eligibility list.
3. Most promotional decisions are governed by the terms of collective bargaining agreements.

ADMINISTRATION OF THE AFFIRMATIVE ACTION PROGRAM

The Illinois Human Rights Act (PA81-1216) mandates that State agencies employing one thousand (1,000) or more employees appoint a full-time Equal Employment Officer. The responsibility for planning, developing, and administering the Department of Juvenile Justice's Affirmative Action/Equal Employment Opportunity Program on a day-to-day basis rests with the Administrator of the Office of Affirmative Action, James Crowley at 2715 West Monroe, Springfield, Illinois 62704, (217) 557-1030. Mr. Crowley has been approved by the Illinois Department of Human Rights as the EEO Officer for the Illinois Department of Juvenile Justice. The responsibilities of the Administrator include those mandated by PA81-1216 (*).

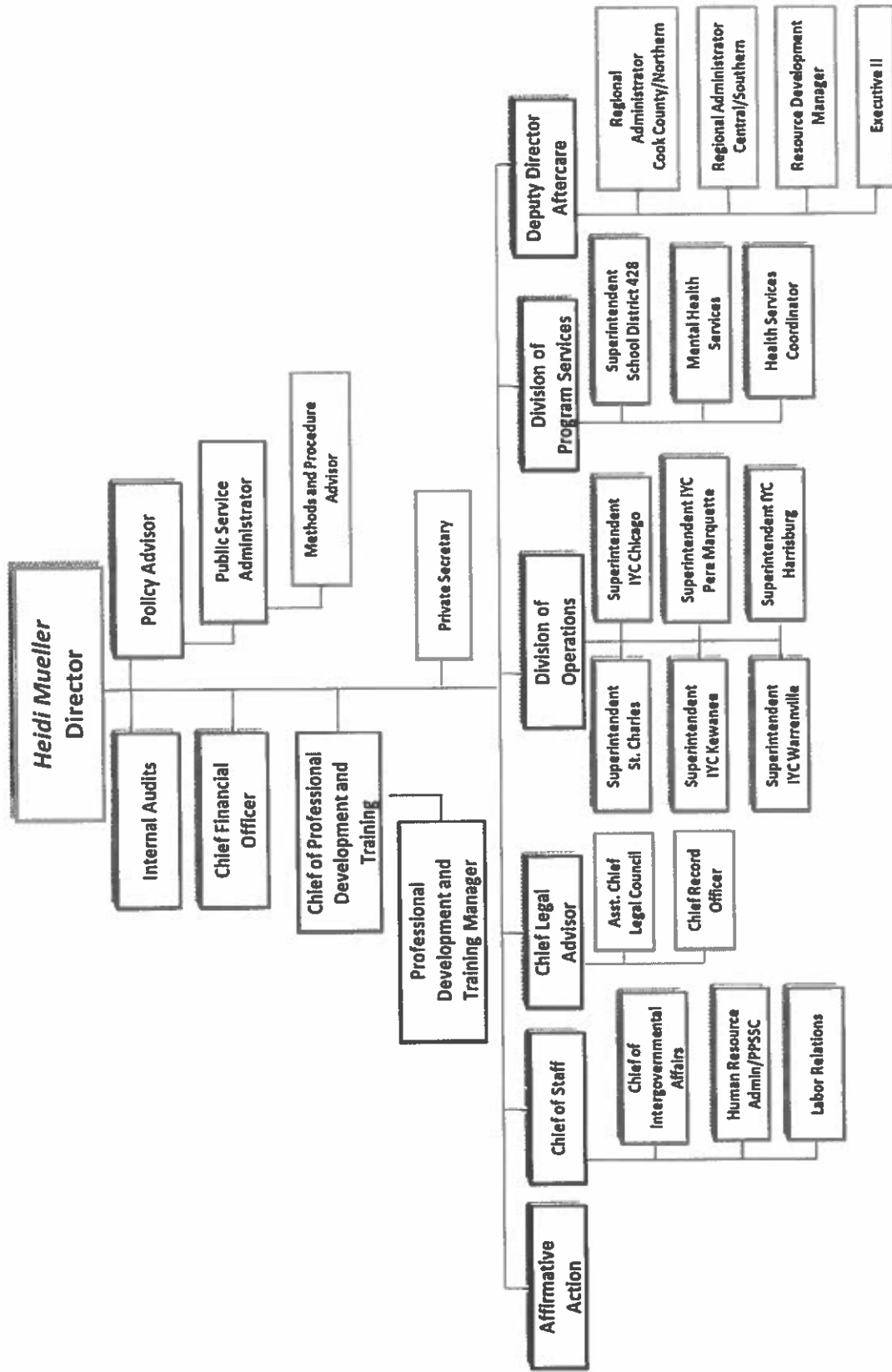
- *1. Advise the Director with respect to the preparation of the Department's Affirmative Action Plan, equal employment opportunity programs, procedures, regulations and reports.
- *2. Evaluate the sufficiency of the Department's AA/EEO program and recommend any improvements or corrections, including remedial or disciplinary action with respect to managerial or supervisory employees who fail to comply with the program.
- *3. Make changes in programs and procedures to eliminate discriminatory practices, as authorized by the Director.
- *4. Evaluate tests, employment policies and criteria and report to the Director and the Department of Human Rights any such policies, practices and criteria which have disparate impact on minorities, women and the people with disabilities.
- *5. Provide counseling for any aggrieved employee or applicant for employment who believes that he or she has been discriminated against in violation of the Human Rights Act.
- *6. Prepare all required Federal and State reports and serve as liaison between the Department and EEO enforcement authorities.
7. Collect, analyze and prepare for publication all statistical data required by the Affirmative Action Plan.
8. Inform management of developments in the EEO field and assist management and supervisory personnel who need technical or administrative support in fulfilling their responsibilities under this Plan and under equal employment opportunity laws and regulations.
9. Administer the Department's recruitment program for minorities, women and applicants with disabilities. The recruitment program shall include but not be limited to dissemination of posters, use of advertising media patronized by minorities, women and persons with disabilities, use of minority, disability and women's group contacts and community relations programs.
10. Periodically review employment practices and related documents to help assure that non-discriminatory job-related criteria are used in the recruitment, application and appointment processes.

11. Receive, investigate and make recommendations on internal and external complaints of discrimination and report internal and external complaints to the Department of Human Rights.
12. Serve as liaison between the Department and minority, and women's organizations and organizations serving persons with disabilities.
13. Design and implement audit and reporting systems for measuring the effectiveness of agency programs, including review of Exit Interview Forms and Hiring and Promotion Monitors.
14. Supervise, train, and direct the Office of Affirmative Action staff in their related duties and responsibilities.
15. Review all agency lay-off and reorganization plans to determine if there will be any disparate impact upon persons in protected class groups and submit a written report of findings with suggested alternatives to lessen or eliminate such impact.

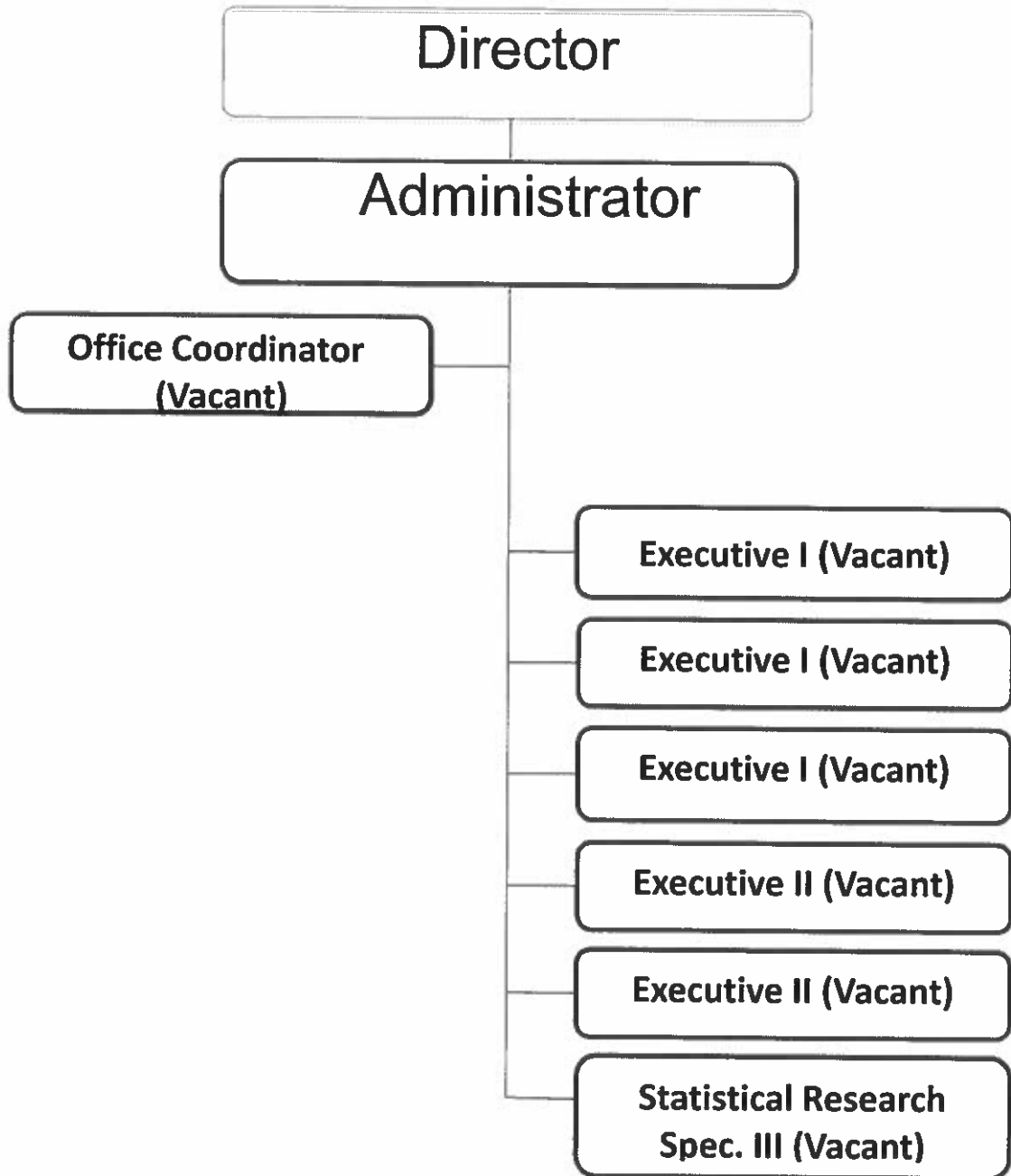
Each Manager and Superintendent in conjunction with the Office of Affirmative Action shall administer and implement an AA/EEO program tailored to their area or facility which shall include:

1. Complete record keeping on applicants and reporting of personnel transactions.
2. Validation of selection criteria used in the employment process with technical assistance from the Office of Affirmative Action to ensure that tests and other selection methods measure essential job functions.
3. Use of job-related, criteria both in policy and practice.
4. Participation in recruiting to attract minorities and women for employment within the Department.
5. Enforcement of the Department's AA/EEO policies, including the use of all forms and procedures required to aid in documenting adherence to Equal Employment Opportunity guidelines.
6. Assistance in identifying problem areas with respect to Affirmative Action.
7. Monitoring the performance of facility and unit heads relating to the Department's AA/EEO policies and taking remedial action as necessary.
8. Forwarding complaints to the Office of Affirmative Action for handling.

ILLINOIS DEPARTMENT OF JUVENILE JUSTICE TABLE OF ORGANIZATION



Office of Affirmative Action Table of Organization



DISSEMINATION OF THE AFFIRMATIVE ACTION POLICY AND PLAN

INTERNAL

1. The Director's policy statement shall be posted on bulletin boards in all Departmental offices and facilities.
2. All executive staff, superintendents, supervisors and program staff will be provided with a copy of the policy statement and Affirmative Action Plan which they will make accessible to staff and others who may request it.
3. Policy training will be conducted for Department personnel of all levels upon the request of administrators and managers.
4. Orientation in Equal Employment Opportunity/Affirmative Action issues will be a part of all pre-service training of employees at the Department of Juvenile Justice Training Academy.

EXTERNAL

1. "Equal Opportunity Employer" will be included in all Departmental advertising.
2. Recipients of federal funds through the Department of Juvenile Justice will be advised of the Department's Affirmative Action/ Equal Employment Opportunity policies.
3. Regular sources of employment such as related federal, state, or local agencies, schools, community organizations and recruitment sources will be advised of the Department's Affirmative Action/Equal Employment Opportunity policies. The Affirmative Action Plan will be available to all recruitment sources and to applicants.
4. Minority news media will be advised of the Department's Affirmative Action/Equal Employment Opportunity policies.
5. Unions, professional associations and business enterprises involved with the Department will be advised of the Affirmative Action/Equal Employment Opportunity policies of the Department.
6. A copy of the Affirmative Action Plan will be provided to the State Library and the Department of Human Rights.
7. A copy of the Affirmative Action Plan will be available to State and Federal regulatory agencies.
8. Upon request, and within the guidelines of the Freedom of Information Act, the Department of Juvenile Justice will make available for public inspection a copy of its current Affirmative Action Plan and supporting documentation.

PART II

PART II

THE ILLINOIS DEPARTMENT OF JUVENILE JUSTICE'S WORK FORCE

The Affirmative Action Plan includes several tables, which depict the Department of Juvenile Justice's (IDJJ) workforce. The Plan includes the employee headcount by race, sex, and job category as well as a summary of personnel transactions of Fiscal Year 2022.

Analysis of the Workforce Summary

The agency workforce summary table provides information on the number and percent of minority and female employees within eight job categories throughout the Department (refer to page 14). A summary of the workforce by region is in the appendix B.

Summary of Workforce Transactions

A summary of personnel transactions is provided on page 15. A summary of personnel transactions is in the appendix A.

Summary of Workforce Analysis by Region

Agency: Department of Juvenile Justice

Reporting Period: 6/30/22

Grand Total

EEO Category	Grand Total	MALES					FEMALES					PERCENTAGES							
		Total	W	B/AA	H/L	A	AI/AN	NH	OPI	PWD	Total	W	B/AA	H/L	A	AI/AN	NH	OPI	PWD
Officials / Administrators	56	27	16	7	1	2	1	1		1	29	11	17						
Professionals	600	314	150	135	28	1		11		11	286	126	135	18	3	4		18	
Technicians	15	7	7								8	7			1				
Protective Service																			
Para-professionals	14	2	2								12	7	4	1					
Administrative Support	6	1	1								5	4	1						
Skilled Craft	25	25	21	2	1	1													
Service / Maintenance	38	21	15		6			1		1	17	7	6	4				2	
TOTAL	754	397	212	144	36	4	1	13	357	162	163	23	4	5	21	52.65%	44.74%	57.89%	40.00%

Grand Total Employees:		Males:		Females:		Total Minorities:	
White:	374 49.60%	Black/African American:	307 40.72%	Hispanic/Latino:	59 7.82%	Asian:	8 1.06%
						AI/AN:	6 0.80%
						NHOP:	
						PWD:	34 4.51%

W=White B/AA=Black or African American H/L=Hispanic or Latino A=Asian AI/AN=American Indian or Alaskan Native NHOP=Native Hawaiian or Other Pacific Islander PWD=People with Disabilities
DHR-9 (Rev. Feb. 2016)

Summary of Workforce Transactions Report by EEO Category

Reporting Period: 7/1/2021 - 6/30/2022

Agency: Juvenile Justice

EEO Category: GRAND TOTAL

Transaction	Grand Total	MALES										FEMALES										PERCENTAGES									
		Total					AI					NH					AI					NH					AI				
		W	B/AA	H/L	A	PWD	W	B/AA	H/L	A	PWD	W	B/AA	H/L	A	PWD	W	B/AA	H/L	A	PWD	W	B/AA	H/L	A	PWD	W	B/AA	H/L	A	PWD
New Hires	46	23	12	10	1												23	10	12	1											
Promotions	2	1		1													1		1												
Intra-Agency Transfers	4																4	3		1											
Suspensions	50	22	11	10	1												28	10	18												
Separations	101	63	28	26	7	2											38	14	19	3	2										
Discharges	8	2		2													6	2	4												
Lay Off																															
Demotions																															
Reductions	5	3	1	2													2		1	1											
Reinstatements																															
Reemployment																															
Upward Reallocations																															
Downward Reallocations																															

W=White B/AA=Black or African American H/L=Hispanic or Latino A=Asian AI/AN=American Indian or Alaskan Native NH/OPI=Native Hawaiian or Other Pacific Islander PWD=People with Disabilities

DETERMINING EQUITABLE EMPLOYMENT LEVELS FOR MINORITIES AND FEMALES

The Department of Juvenile Justice hires employees in numerous positions under eight Equal Employment Opportunity categories. A description of the eight EEO job categories is contained in (Table 1.) on the following page.

Data on the availability of minority and female employees is compared to the number of who are employed by the Department to determine if the work force includes minorities and females in the job categories in numbers proportionate to their availability in the qualified applicant population.

When job categories in the work force do not include minority or female employees in numbers that are proportionate to their availability for employment, hiring goals are established to remedy the underutilization that has been found. The methodology used to determine underutilization of minorities and females is explained in pages 53-55.

Table 2 contains a description of the ten geographical regions for which hiring goals are established. Page 20 presents a summary of IDJJ underutilization by region, sex, race, and job category.

TABLE 1 EQUAL EMPLOYMENT OPPORTUNITY JOB CATEGORIES

Officials and Administrators

Occupations in which employees set broad policies, exercise overall responsibility for execution of these policies, direct individual departments or special phases of the agency's operations, or provide specialized consultation on a regional, district or area basis.

A. Professionals

Occupations which require specialized and theoretical knowledge which is usually acquired through college training or through work experience and other training which provides comparable knowledge. The workers are entrusted with public safety, security and protection from destructive forces.

B. Technicians

Occupations which require a combination of basic skill or technical knowledge and manual skill which can be attained through specialized post-secondary school education or through equivalent on-the-job training.

D. Protective Service Workers

These job titles are now included with Professionals.

E. Paraprofessionals

Occupations in which workers perform some of the duties of a professional or technician in a supportive role which usually requires less formal training and/or experience normally required for professional or technical status.

F. Administrative Support

Occupations in which workers are responsible for internal and external communication, recording and retrieval of data and/or information and other paper work required in an office.

G. Skilled Craft Workers

Occupations in which workers perform jobs which require special manual skills and a thorough and comprehensive knowledge of the processes involved in the work which is required through on-the-job training and experience or through apprenticeship or other formal training programs.

H. Service and Maintenance

Occupations in which workers perform duties which result in or contribute to the comfort, convenience, hygiene, or safety of the general public or which contribute to the upkeep and care of buildings, facilities or grounds of public property.

(For positions under these categories refer to page 58 and 59).

Illinois Department of Human Rights State Regional Map



TABLE 2**GEOGRAPHICAL REGIONS****REGION 1**

Cook
DeKalb
DuPage
Grundy
Kane
Kankakee
Kendall
Lake
McHenry
Will

REGION 2

Boone
Ogle
Stephenson
Winnebago

REGION 3

Bureau
Carroll
Henry
Jo Daviess
La Salle
Lee
Mercer
Putnam
Rock Island
Whiteside

REGION 4

Adams
Brown
Hancock
Henderson
Knox
McDonough
Pike
Schuyler
Warren

REGION 5

Dewitt
Fulton
Livingston
Marshall
Mason
McLean
Peoria
Stark
Tazewell
Woodford

REGION 6

Champaign
Douglas
Ford
Iroquois
Piatt
Vermillion

REGION 7

Christian
Cass
Greene
Logan
Macon
Macoupin
Menard
Montgomery
Morgan
Sangamon
Scott
Shelby

REGION 8

Bond
Calhoun
Clinton
Jersey
Madison
Monroe
Randolph
St. Clair
Washington

REGION 9

Clark
Clay
Coles
Crawford
Cumberland
Edgar
Effingham
Fayette
Jasper
Lawrence
Marion
Moultrie
Richland

REGION 10

Alexander
Edwards
Franklin
Gallatin
Hamilton
Hardin
Jackson
Jefferson
Johnson
Massac

Perry
Pope
Pulaski
Saline
Union
Wabash
Wayne
White
Williamson

Underutilization Summary by Region

Name of Agency: Juvenile Justice

Fiscal Year: FY-2023

Region	Officials and Administrators					Professionals					Technicians					Protective Service Workers				
	Women	B/AA	H/L	A	AI/AN	NH-OP	Women	B/AA	H/L	A	AI/AN	NH-OP	Women	B/AA	H/L	A	AI/AN	NH-OP		
1				1																
2																				
3																				
4																				
5																				
6																				
7																				
8																				
9																				
10							21		1											
Total	0	0	0	1	0	0	21	0	1	32	0	0	0	0	0	0	0	0		

Region	Paraprofessionals						Administrative Support						Skilled Craft Workers						Service-Maintenance					
	Women	B/AA	H/L	A	AI/AN	NHOPi	Women	B/AA	H/L	A	AI/AN	NHOPi	Women	B/AA	H/L	A	AI/AN	NHOPi	Women	B/AA	H/L	A	AI/AN	NHOPi
1																2								
2																								
3																								
4																								
5																								
6																								
7																								
8																								
9																								
10																								
Total	0	0	0	0	0	0	0	0	0	0	0	0	0	0	0	2	0	0	0	0	0	0	0	0

Total underutilization for Women: 21

Total underutilization for Black or African American: 0

Total underutilization for Hispanic or Latino: 3

Total underutilization for Asian: 33

Total underutilization for American Indian or Alaskan Native: 0

Total underutilization for Native Hawaiian or Other Pacific Islander: 0

Note: If no calculations are necessary in any region where the agency does not have a facility or because there are less than ten employees in the EEO category in that region, leave that box blank.

W= Women B/AA = Black or African American H/L = Hispanic or Latino A = Asian AI/AN = American Indian or Alaskan Native NHOP= Native Hawaiian or Other Pacific Islander
DHR 11-AAP (Rev. Feb. 2016)

PART III

PART III

GOALS AND TIMETABLES

The eradication of those staffing underutilizations that were identified in the Underutilization Summary is an ideal to which the IDJJ is committed for Fiscal Year 2023.

NUMERICAL GOALS AND TIMETABLES TO REMEDY UNDERUTILIZATION

The Department of Juvenile Justice's objective is:

1. To achieve by June 30, 2023, at least minimum numerical compliance by reaching numerical goals in each job category for minorities and females considering the number of opportunities to hire new employees.
2. A regional breakdown of numerical objectives is reported on the Underutilization Summary by Region form on page 20.

PERFORMANCE MEASURE BACKGROUND INFORMATION

Based on its availability analysis, the Department of Juvenile Justice has underutilization for women and minorities. The Department will work toward better education of managers on affirmative action goals to address underutilization. Enhanced recruitment efforts will be used to reduce the underutilization of Hispanics, Females, Asians and persons with disabilities. Education of managers and employees on equal opportunity and sexual harassment will be reviewed and enhanced to address the turnover rate of female employees.

Performance Measure I

Goal:

To address underutilization of Women in the professional EEO job category through development of on-going recruitment relationships and organizations representing women.

Outcome:

The Department expects to reduce the underutilization of females by (21) Professionals in region 10.

Output:

1. The Office of Affirmative Action will identify appropriate entities to be contacted.

Completion date: October 31, 2022.

2. The identified entities will be contacted and provided with materials on State positions and the hiring process.

Completion date: November 15, 2022.

3. The Affirmative Action Office will provide supporting documentation to the Department of Human Rights.

Completion date: Quarterly (October 2022, January 2023, April 2023, July 2023)

Performance Measure II

Goal:

IDJJ is presently not underutilized for Black/African Americans. IDJJ will continue to maintain parity in this category.

Output:

1. The Affirmative Action Office will distribute the Affirmative Action Plan and Affirmative Action Goals to all Managers.

Completion date: October 31, 2022.

2. Hiring Managers will be provided with education on their Affirmative Action goals and use of the hiring and promotion monitor form so that underutilized candidates appearing on eligibility lists are interviewed when underutilization exists.

Completion date: November 30, 2022.

3. Affirmative Action staff will attend job fairs and conduct on site recruitments with partner agencies (IDES, Community based organizations and Higher Learning Institutions).

Completion date: Quarterly

4. Compliance will be monitored by reviewing the eligibility lists and the interview lists.

Completion date: May 31, 2023.

5. The Department will provide supporting documentation to the Department of Human Rights.

Completion date: Quarterly (October 2022, January 2023, April 2023, July 2023)

Performance Measure III

Goal:

To address underutilization of Hispanics / Latinos in the below listed EEO category through development of ongoing recruitment relationships with organizations representing Hispanics.

Outcome:

The Department expects to reduce the underutilization of the Hispanic work force by (2) Skilled Craft in region 1, and (1) Professional in region 10.

Output:

1. The Office of Affirmative Action will identify appropriate entities to be contacted.

Completion date: October 31, 2022.

2. The identified entities will be contacted and provided with materials on State positions and the State hiring process.

Completion date: November 15, 2022.

3. The Office of Affirmative Action will evaluate referrals to determine the number of applicants recruited through the organizations.

Completion date: May 31, 2023.

4. The Department will provide supporting documentation to the Department of Human Rights.

Completion date: Quarterly (October 2022, January 2023, April 2023, July 2023)

Performance Measure IV

Goal:

To address underutilization of Asians in the below listed EEO category. The Department must maintain current agency contacts and continue the development of recruitment relationships with institutions of higher education and organizations representing Asians, e.g., Chinese American Service League.

Outcome:

The Department expects to reduce the underutilization of the Asian work force by (28) Professionals and (1) Official/Administrator in region 1, and (4) Professionals in region 10.

Output:

1. The Office of Affirmative Action will identify appropriate entities to be contacted.

Completion date: October 31, 2022.

2. The identified entities will be contacted and provided with materials on State positions and the State hiring process.

Completion date: November 15, 2022.

3. The Office of Affirmative Action will evaluate referrals to determine the number of applicants recruited through the organizations.

Completion date: May 31, 2023.

4. The Department will provide supporting documentation to the Department of Human Rights.

Completion date: Quarterly (October 2022, January 2023, April 2023, July 2023)

Performance Measure V

Goal:

IDJJ is presently not underutilized for American Indians/Alaskan Natives. IDJJ will attempt to retain this goal through continued recruitment efforts.

Output:

1. The Office of Affirmative Action will distribute information about positions to organizations serving ~~American~~ Indians/Alaskan Natives.

Completion date: October 31, 2022.

2. The identified entities will be contacted and provided with materials on State positions and the hiring process.

Completion date: November 15, 2022.

3. The Affirmative Action Office will provide supporting documentation to the Department of Human Rights.

Completion date: Quarterly (October 2022, January 2023, April 2023, July 2023)

Performance Measure VI

Goal:

IDJJ is presently not underutilized for Native Hawaiians and Other Pacific Islanders. IDJJ will continue to maintain parity in this category.

Performance Measure VII

Goal:

Reduce the underutilization of those within the IDJJ workforce with disabilities by (6)

Outcome:

To provide an equitable opportunity to applicants and employees with disabilities, ensure that supervisors are aware of their responsibilities and continue to consider applicants with disabilities in our hiring process.

Output:

1. Distribute materials on the agency reasonable accommodation program.

Completion date: December 31, 2022.

2. Provide supporting documentation to the Department of Human Rights.

Completion date: Quarterly. (October 2022, January 2023, April 2023, July 2023)

Performance Measure VIII

Goal:

Provide training and education on sexual harassment.

Outcome:

To reduce the number of complaints by ensuring all employees and managers are aware of what sexual harassment is and the consequences of engaging in sexual harassment.

Output:

1. Ensure that sexual harassment training is provided in cycle training.

Completion date: June 30, 2023.

2. Monitor that the Sexual Harassment Policy is posted.

Completion date: March 30, 2023.

3. Provide supporting documentation to the Department of Human Rights.

Completion date: Quarterly (October 2022, January 2023, April 2022, July 2023)

Performance Measure IX

Goal:

Provide information to all managers and supervisors on EEO laws, regulations and the Affirmative Action Plan.

Outcome:

Reduce complaints of employees by ensuring all employees, officials and managers are aware of what discrimination entails and the possible consequences of discriminatory practices. Encourage use of the internal complaint process.

Outputs:

1. Review Training Academy training programs.

Completion date: December 30, 2022.

2. Distribute information to each facility on posting of the EEO Policy.

Completion date: November 30, 2022.

3. The Department will provide supporting documentation to the Department of Human Rights.

Completion date: Quarterly (October 2022, January 2023, April 2023, July 2023)

PART IV

PART IV

DEPARTMENT OF JUVENILE JUSTICE INTERNAL COMPLAINT PROCEDURE

The Office of Affirmative Action has jurisdiction over complaints by employees and applicants for employment alleging discrimination based on: AGE, RACE, SEX, NATIONAL ORIGIN, ANCESTRY, RELIGION, ARREST RECORD, DISABILITY, SEXUAL HARASSMENT, CITIZENSHIP STATUS, MARITAL STATUS, PREGNANCY, SEXUAL ORIENTATION and/or VIOLATIONS OF THE HUMAN RIGHTS ACT, TITLE VII AND THE DEPARTMENT OF JUVENILE JUSTICE'S AFFIRMATIVE ACTION POLICY STATEMENT. The Department of Juvenile Justice has established this internal complaint process to resolve complaints in a prompt and effective manner.

An employee or applicant for employment who feels that he or she has been sexually harassed or discriminated against should report the incident to their supervisor, to a supervisor higher in the chain of command if the employee's supervisor is alleged to have engaged in the conduct, directly to the Office of Affirmative Action or call the State of Illinois Sexual Harassment and discrimination Helpline: 1-877-236-7703 (Monday-Friday 8:30 to 5:00). Unless a signed written statement has been submitted, a complainant may be asked to complete a complaint form detailing the specific charges of discrimination. A Chief Administrative Officer may also refer employee complaints of sexual harassment or discrimination to the Office of Affirmative Action for investigation.

Complaints will be reviewed to determine if there is sufficient information to proceed with investigation. Complaints should contain the following information:

- a. Basis - Age, Race, Sex, National Origin, Ancestry, Religion, Arrest Record, Disability, Sexual Harassment, Citizenship Status, Marital Status, Pregnancy, Sexual Orientation and/or violations of the Illinois Human Rights Act, Title VII or IDJJ's Affirmative Action Policy Statement.
- b. Issue - Failure to hire, Failure to promote, Termination, Discipline, Assignments, Harassment, Retaliation or other terms or conditions of employment.
- c. Respondent - Person(s) named responsible for acts of discrimination.
- d. Complainant - Written signature of person filing complaint of discrimination.

If a charge does not contain sufficient information to proceed with investigation and/or lacks one or more of the four elements, the complainant will be asked to provide the necessary information. Failure of the complainant to do so will indicate a lack of interest to pursue the complaint and the case will be closed by the Office of Affirmative Action.

Unless of a continuing nature, the complaint should be filed within 180 days of an alleged unfair employment practice or awareness by the complainant of the unfair practice.

The internal EEO/AA Complaint form is available from the Office of Affirmative Action, from Department personnel offices, the Administrative Directive form book and the internal website. The person completing the form needs to include the following information:

- a. The full name, address and telephone number of Complainant.
- b. A statement of facts alleged to constitute the unfair employment practice.

- c. The date, time, place and person(s) alleged to be discriminating.
- d. Basis of complaint.
- e. Issue of complaint.
- f. A statement describing any other action initiated by the complainant to address the issues in the complaint.
- g. The signature of the complainant.

Questions regarding how to file a complaint can be directed to:

James M. Crowley, Administrator
Office of Affirmative Action
2715 West Monroe
Springfield, IL 62704
(217)557-1030

INVESTIGATION PROCEDURE

I. Receipt of Complaint

- A. The complaint will be acknowledged by letter, telephone or personal contact with the complainant.
- B. The appropriate manager will be notified that a complaint has been received alleging discrimination or harassment. A position statement and/or all pertinent documents that may clarify and/or explain actions and decisions may be requested.

II. Investigation

- A. The Affirmative Action Officer assigned to the complaint will interview the complainant, the person accused and pertinent witnesses.
- B. The Affirmative Action Officer shall compile all relevant documents.
- C. At the completion of the investigation, a narrative report of the facts, supporting documents and a recommendation of evidence or lack of evidence of sexual harassment or discrimination is to be prepared by the Affirmative Action Officer.

II. Assessment and Disposition of Complaint

- A. Analysis
 - 1. The Affirmative Action Administrator will review the investigation report to determine the complaint status. If further investigation is warranted, it will be requested.
 - 2. The Investigator will discuss or submit an assessment of the case to the Affirmative Action Administrator. The assessment shall include:

- a. the complainant's allegation(s)
- b. Respondent's position
- c. evidence compiled
- d. disposition of the complaint

B. Disposition of the Complaint

- 1. Lack of Evidence - When there is lack of evidence to substantiate the allegations made by the complainant, the Office of Affirmative Action shall notify the complainant of the finding and close the case.

The complainant shall also be informed of his/her right to pursue the complaint with other regulatory agencies. The Office of Affirmative Action shall also notify the appropriate manager that the case has been closed.

- 2. Substantial Evidence - A finding of substantial evidence will result in appropriate corrective action being taken. A conciliation meeting with the complainant, management and the Office of Affirmative Action may be held.

IV. Administrative Review

- A. If the Affirmative Action Administrator and the CAO cannot agree on a resolution, the Affirmative Action Administrator will confer with the Director for a review of the case and conciliation efforts.
- B. The Director's decision will serve as the final disposition of the case.
- C. Notice of the decision will be forwarded to the complainant.

V. Regulatory Filing

The internal complaint process shall continue regardless of whether a complainant also files a charge with the Department of Human Rights and/or the EEOC or any other appropriate governing agency.

VI. Withdrawal

When a complainant expresses a desire to withdraw an internal complaint, that fact shall be documented and the case closed.

ILLINOIS DEPARTMENT OF JUVENILE JUSTICE

Equal Employment Opportunity and Affirmative Action Complaint

Complainant: _____

Address: _____ City: _____ Zip Code: _____

Home Telephone: _____ Work Site Telephone: _____

Name of Employer: _____ Address: _____

Specific basis of discrimination:

☐ Race ☐ Religion ☐ Age ☐ National Origin ☐ Gender ☐ Sexual Harassment ☐ Disability

☐ Other _____

Specific area of discriminatory practice:

☐ Interview ☐ Promotion ☐ Selection ☐ Training ☐ Lay Off ☐ Discharge ☐ Discipline

☐ Other _____

Name and title of person(s) who discriminated against you:

Name: _____ Title: _____

Name: _____ Title: _____

Name: _____ Title: _____

Describe exactly what occurred and when: (If additional space is needed, use back of form)

Have you filed a grievance via other procedures? ☐ No ☐ Yes

Complainant's Signature: _____ Date Filed: _____

EEO/AA Officer's Signature: _____ Date Received: _____

RETURN FORM TO: Office of Affirmative Action, 2715 West Monroe Street, Springfield IL 62704

Lined area for text entry, consisting of multiple horizontal lines.

PART V

PART V

AFFIRMATIVE ACTION FOR PERSONS WITH DISABILITIES

General Provisions

The Department of Juvenile Justice prohibits discrimination against persons with disabilities and provides reasonable accommodation to individuals with disabilities. Except for purposes of Affirmative Action, the IDJJ cannot make pre-employment inquiry as to whether the applicant is a person with a disability or as to the nature or severity of a disability. Personnel conducting interviews are informed of the standards for pre-employment inquiries as part of an in-service training program. The Office of Affirmative Action staff is available to answer questions regarding pre-employment interviews as they arise. Actions will be taken to ensure that tests do not have a disparate impact on persons with disabilities and that employment criteria are job related. Job descriptions are reviewed before interviews to identify essential job duties. Pre-employment physical examinations are prohibited unless such an examination is job-related and required of all applicants for the position and is conducted only after a conditional offer of employment has been made. IDJJ will also participate in the alternative employment program established by the Personnel Code.

Employees with disabilities are identified through the survey for employees with disabilities. The information collected is only to be used for affirmative action purposes or for providing reasonable accommodation. An employee may complete a new survey form at any time should the employee's disability status change.

Each IDJJ work site will comply with agency Administrative Directives relating to the safety and evacuation of employees with disabilities. Provisions are made through the ADA Coordinator for the evacuation of employees who indicate a need for assistance in the event of an emergency evacuation. Two (3) employees in Fiscal Year 20 have indicated a need for assistance. Local policy and procedure shall be audited.

Any employee or applicant who believes that he/she has been discriminated against due to his/her disability may file a grievance in accordance with the procedures outlined in Administrative Directive 03.01.305-*Accommodation Requests or Grievances Based on Disability*.

The Department's ADA Coordinators are:

Michael Walters, Chief Legal
Illinois Dept. of Juvenile Justice
60 East Van Buren St, Suite 1374
Chicago, IL 60605
(312)814-3848

James M. Crowley, Administrator
Office of Affirmative Action
Illinois Dept. of Juvenile Justice
2715 West Monroe
Springfield, IL 62704
(217)557-1030

Physical Access for Persons with Disabilities

The Department offers programs, activities, or services to the public and program beneficiaries at the youth centers throughout the State of Illinois. General offices are in Chicago and Springfield.

Architects have evaluated department facilities and a compliance plan has been developed identifying barriers and recommending corrective action.

The Department's general priorities in developing its Transition Plan for its facilities were accessibility from streets (or as appropriate, from designated parking areas) and accessibility of entry and egress, accessibility of circulation through public areas, hallways and elevators to information desks and reception areas, meeting and conference rooms, restrooms, cafeterias, concession stands and vending areas. Evaluations of these public areas included doorways, ramps and rails, drinking fountains, telephones, alarm systems and building signage.

The Department provides accessible programs, services, and activities by removing architectural barriers by modifying current facilities, or by relocating services, programs and activities to accessible areas or buildings within a facility or, where appropriate, to alternate facilities at a different location.

The Department's Transition Plan is available for public inspection at 60 E Van Buren St., Suite 1374, Chicago, Illinois 60605 and 2715 West Monroe, Springfield, Illinois 62704.

Recruitment of Applicants with Disabilities

The agency affirmative action program includes efforts to recruit applicants with disabilities for employment. The Office of Affirmative Action will send position postings and information on the application process to agencies and organizations representing the interests of persons with disabilities such as the CMS successful disability opportunity program and placement services at colleges and universities. Affirmative Action Officers will also attend job fairs for persons with disabilities.

AVAILABILITY ANALYSIS FOR PERSONS WITH DISABILITIES

Agency: <u>Juvenile Justice</u>	Fiscal Year: <u>2023</u>
Total Employees	754
% of Persons with Disabilities in Illinois Labor Force	<u>5.10%</u>
Labor Force	<u>38</u>
# of Employees with Disabilities in Agency	<u>34</u>
Underutilization/Parity	<u>4</u>

Numerical Goals for People with Disabilities

Area to be addressed:

The underutilization of 4 people with disabilities.

Goal:

Eliminate underutilization by 4 people with disabilities.

Objectives:

As vacancies occur, hire 4 people with disabilities.

Action Item:

Identify recruitment sources for people with disabilities.

Responsible official: EEO/AA Officer

Completion date: October 31, 2022

Monitoring procedure: Provide copy of list at quarterly

Action item:

Send information on state positions to sources.

Responsible official: EEO/AA Officer

Completion date: November 30, 2022

Monitoring procedure: Review number of applicants

REASONABLE ACCOMMODATION POLICY

In compliance with the U.S. Americans with Disabilities Act (ADA) of 1990, as amended by the Americans with Disabilities Act Amendments Act (ADAAA) of 2008, and the Illinois Human Rights Act, it is the policy of the Illinois Department of Juvenile Justice to reasonably accommodate the known physical or mental conditions of otherwise qualified applicants and employees with disabilities. The Illinois Department of Juvenile Justice recognizes the right of a qualified applicant or employee with a disability to request a reasonable accommodation to ensure equal opportunity in the application process; to enable him or her to perform essential functions of a job; and/or to enable him or her to enjoy equal benefits and privileges of employment.

It is the responsibility of the Illinois Department of Juvenile Justice to provide a reasonable accommodation to qualified applicants and employees with disabilities, when such reasonable accommodation does not pose an undue hardship to the operation of the agency's business.

The agency Equal Employment Opportunity Officer and/or the Americans with Disabilities Act Coordinator can provide further information about the agency's policy in this area.



Chief Executive Officer

8/30/2022

Date

STATEMENT ON REASONABLE ACCOMMODATION

It is the policy of the Illinois Department of Juvenile Justice to provide equal employment opportunity to persons with disabilities and to reasonably accommodate the physical or mental limitations of qualified applicants and employees with disabilities. The Department recognizes the right of any applicant or employee with a disability to request accommodation in connection with his or her application or employment. Once an accommodation has been requested, it is the responsibility of the Department under state and federal law to provide accommodation to qualified disabled applicants and employees unless to do so would impose an undue hardship on the operation of the agency's business.

To implement this policy, the procedures outlined in Administrative Directive 03.01.305 Accommodation Requests or Grievances Based on Disability shall be followed. Employees or applicants who request an accommodation shall be provided an accommodation if the need is apparent, the appropriate accommodation is readily identifiable, and it is not an undue hardship to provide the accommodation. Where the need is not apparent, the appropriate accommodation is not readily identifiable, or it may be an undue hardship to provide the accommodation, the employee or applicant shall be given an accommodation request form (DJJ 0238). Any request that is denied shall be submitted to the Office of Affirmative Action for review.

Questions or complaints regarding this policy should be referred to the Office of Affirmative Action.


Heidi Mueller, Director

REASONABLE ACCOMMODATIONS

Employers must make reasonable accommodations of the known physical and mental limitations of otherwise qualified applicants or employees with disabilities, unless the employer can demonstrate that such accommodation would be an undue hardship.

Reasonable accommodation means that the employer tries, within reason, to remove on the job physical barriers which interfere with an employee's ability to perform jobs for which they have the necessary mental capacity and talent. A "person with a disability" is an individual who has a physical or mental impairment that substantially limits one or more major activities or has a record of such impairment or is regarded as having such impairment.

There is no all-inclusive list of possible accommodations. Each situation requires an individual assessment. Examples of reasonable accommodations include wider internal office lanes, entrance ramps, special chair coasters, raised desks, job restructuring, audio amplifiers and changed work schedules.

Requests for Reasonable Accommodations

Requests for reasonable accommodations must be initiated by the employee or person applying for employment. The procedure for reasonable accommodation requests is contained in Administrative Directive 03.01.305 (Exhibit 1). Supervisors or interviewing officers shall take prompt action to accommodate an applicant or employee if the need for accommodation is obvious and the appropriate accommodation is readily identifiable and would not constitute an undue hardship or direct threat. In all other instances, the supervisor or interviewing officer shall provide the employee or applicant with a DJJ 0238- Request for Reasonable Accommodation form (Exhibit 2).

Request forms shall be forwarded to the Chief Administrative Officer who shall grant the request or forward it to the Office of Affirmative Action for determination.

On an annual basis, each Administrator or Manager must report the accommodation requests received during the fiscal year to the Office of Affirmative Action.

Illinois (Exhibit 1) Department of Juvenile Justice	ADMINISTRATIVE DIRECTIVE	Number	03.01.305
		Page	1 of 7
		Effective	11/01/2016
Section 03 Personnel and Labor Relations			
Subsection01 General Provisions			
Subject 305 Reasonable Accomodations Requests - ADA Grievance			

I. POLICY

A. Authority

42 U.S.C. 12101 et seq., Americans with Disabilities Act of 1990

29 CFR 1630, Equal Employment Opportunity for Individuals with Disabilities

730 ILCS 5/3-2.5-20

B. Policy Statement

The Department shall evaluate requests for reasonable accommodations to known physical or mental limitations of an otherwise qualified job applicant or employee with a disability and investigate grievances based on disability.

II. PROCEDURE

A. Purpose

The purpose of this directive is to provide instructions to staff for processing applicant or employee requests for reasonable accommodation based on disability and grievance procedures for a denial of request for reasonable accommodation.

B. Applicability

This directive is applicable to all youth centers, offices, and program sites within the Department.

C. Facility Reviews

A facility review of this directive shall be conducted at least annually.

D. Designees

Individuals specified in this directive may delegate stated responsibilities to another person or persons unless otherwise directed.

ADMINISTRATIVE DIRECTIVE	Effective 11/1/2016	Page 2 of 7	Number 03.01.305
-------------------------------------	--------------------------------------	------------------------------	-----------------------------------

E. Definitions

Chief Administrator - the highest ranking official of a youth center, or the Chief of Professional Development and Training for Juvenile Justice Specialist Intern applicants, or person designated by the Director for other offices and program sites.

Department ADA Coordinator - the person or persons designated by the Director to coordinate efforts of the Department in carrying out its responsibilities under Title II of the Americans with Disabilities Act of 1990.

Disability - a physical or mental impairment that substantially limits one or more of the major life activities of an individual; a record of such an impairment; or being regarded as having such impairment, as defined in the ADA.

Grievant - an applicant or employee with a disability who files a grievance.

Interviewing officer - the person in charge of the interview who has the authority to grant or deny an applicant's request for reasonable accommodations in the application process. For Juvenile Justice Specialist Intern applicants this shall be the Department Training Manager.

Reasonable accommodation - modifications or adjustments to the job application process or the work environment that enable qualified applicants or employees to be considered for a position, to perform the essential functions of a position, and to enjoy equal benefits and privileges of employment.

Working days - Monday through Friday, excluding State holidays.

F. General Provisions

1. Nothing in this directive shall preclude an employee or applicant from pursuing grievances in accordance with applicable Personnel Rules, collective bargaining agreements, or rules of other regulatory agencies.
2. Applicants and employees shall have access to this directive and shall, upon request, be provided with a copy. Copies of this directive and applicable forms shall be available at all youth centers, worksites, and locations where applicants are tested or interviewed, and from the Department ADA Coordinator.
3. Upon request, applicants and employees shall be provided assistance in complying with the procedures set forth in this directive.
4. Reasonable accommodations may include, but are not limited to:
 - a. Making existing facilities readily accessible and usable.
 - b. Job restructuring or part-time or modified work schedules.
 - c. Reassignment to a vacant position.

ADMINISTRATIVE DIRECTIVE	Effective 11/1/2016	Page 3 of 7	Number 03.01.305
-------------------------------------	--------------------------------------	------------------------------	-----------------------------------

- d. Acquisition or modification of equipment or devices.
 - e. Appropriate adjustment or modification to examinations, training materials, or policies.
 - f. The provision of qualified readers or interpreters.
 - g. Other similar accommodations.
5. The Department shall not be required to grant a requested accommodation that would cause undue hardship poses a direct threat to the health and safety of other individuals at the work place, or fundamentally alter the nature or operation of the youth center, office or program site. An "undue hardship" means an action requiring significant difficulty or expense, when considered in light of the following factors:
- a. the nature and cost of the accommodation requested;
 - b. the overall financial resources of the facility or facilities involved in the provision of the reasonable accommodation; the number of persons employed at such facility; the effect on expenses and resources, or the impact otherwise of such accommodation upon the operation of the facility;
 - c. the overall financial resources of the Department; the overall size of the Department with respect to the number of its employees; the number, type, and location of its facilities; and
 - d. the type of operation or operations of the Department, including the composition, structure, and functions of the workforce of the Department; the geographic separateness, administrative, or fiscal relationship of the facility or facilities in question to the Department.
6. The determination of what accommodation, if any, is appropriate shall be made on a case-by-case basis.
- a. Action taken to reasonably accommodate an applicant or employee shall not necessarily constitute a precedent for another applicant or employee.
 - b. The terms of collective bargaining agreements may be relevant to a determination of what accommodation, if any, may be made.
7. When the need for an accommodation is not obvious, the Department, before providing a reasonable accommodation may require that the individual with a disability provide medical documentation of the need for accommodation.

G. Procedures for Requesting Reasonable Accommodation

- 1. The applicant or employee is responsible for initiating a verbal or written request for reasonable accommodation to the interviewing officer or his or her supervisor. The request shall include, among other matters:

ADMINISTRATIVE DIRECTIVE	Effective 11/1/2016	Page 4 of 7	Number 03.01.305
-------------------------------------	--------------------------------------	------------------------------	-----------------------------------

- a. medical documentation of the need for accommodation, unless the need is obvious.
- b. The precise job-related limitations imposed by the individual's disability; and
- c. Potential reasonable accommodations that could overcome those limitations.

2. For applicants, the interviewing officer shall:

- a. Take prompt action to accommodate an applicant with a disability to ensure equal opportunity in the application process including appropriate adjustment or modifications of examinations if:
 - (1) The need for accommodation is obvious; and
 - (2) The appropriate accommodation is readily identifiable and would not impose an undue hardship; or
- b. Provide the applicant with a Request for Reasonable Accommodation, DJJ 0238, if:
 - (1) The need for accommodation in the job application process is not obvious; or
 - (2) The appropriate reasonable accommodation in the job application is not readily identifiable or appears to impose an undue burden; or
 - (3) The applicant has requested a reasonable accommodation to the work environment if hired.

3. For employees, the supervisor shall:

- a. Take prompt action to accommodate the employee if:
 - (1) The need for accommodation is obvious; and
 - (2) The appropriate reasonable accommodation is readily identifiable and would not impose an undue hardship; or
- b. Provide the employee with a Request for Reasonable Accommodation, DJJ 0238, if:
 - (1) The need for accommodation is not obvious; or
 - (2) The appropriate reasonable accommodation is not readily identifiable or appears to impose an undue hardship; or

ADMINISTRATIVE DIRECTIVE	Effective 11/1/2016	Page 5 of 7	Number 03.01.305
-------------------------------------	--------------------------------------	------------------------------	-----------------------------------

4. The applicant or employee shall complete the DJJ 0238 request form and submit the form to the interviewing officer or supervisor who shall promptly forward the request form to the Chief Administrator.
5. The Chief Administrator shall either:
 - a. Grant the request or take other appropriate action to accommodate the employee or applicant and forward the original request to the Office of Affirmative Action; or
 - b. Deny the request, complete the comments or recommendations section on the DJJ 0238 request form; and forward the original request to the Office of Affirmative Action.
6. The Office of Affirmative Action shall:
 - a. Investigate the request.
 - b. Analyze the particular job involved and determine its purpose and essential functions.
 - c. Ascertain the precise job-related limitations imposed by the individual's disability and how those limitations could be overcome with a reasonable accommodation.
 - d. Identify potential accommodations and assess their effectiveness in enabling the individual to perform the essential function of the position.
 - e. Consider the preference of the applicant or employee to be accommodated.
 - f. Make appropriate recommendations to the Chief Administrator within 30 working days after receipt whenever possible.
 - g. Consult with the appropriate Deputy Director if the Chief Administrator does not concur in the recommendations. The Deputy Director shall determine what accommodation, if any, may be made.
 - h. Notify the applicant or employee and the Chief Administrator of the final decision. The notification shall include appropriate instructions for filing a grievance if the applicant or employee is not satisfied with the decision. Applicants and employees shall be advised of the grievance procedures set forth in this directive.
7. The Chief Administrator shall take reasonable steps to ensure that:
 - a. Any accommodations recommended by the Office of Affirmative Action or directed by the Deputy Director are made.

ADMINISTRATIVE DIRECTIVE	Effective 11/1/2016	Page 6 of 7	Number 03.01.305
-------------------------------------	--------------------------------------	------------------------------	-----------------------------------

b. All verbal and written requests for accommodation and the resulting action are documented.

c. An Annual Accommodation Report, DJJ 0237, is prepared and submitted to the Office of Affirmative Action at the end of each fiscal year.

H. Grievance Procedures

1. An employee or applicant may submit a grievance for the denial of a request for reasonable accommodation which shall be in writing on the Grievance - Denial of a Request for Reasonable Accommodation, DJJ0501. The form must be complete, to the extent known, in order to be given proper consideration. The grievance shall include, among other matters:
 - a. The employment position the applicant or employee with a disability desires or holds.
 - b. Alternative accommodations which may provide accessibility and the estimated cost of such alternatives.
 - c. The reasonable accommodation denied and the estimated cost of such accommodation.
2. It is mutually desirable and beneficial that grievances be satisfactorily resolved in a prompt manner. Time limits established in this Section may be extended by mutual agreement, in writing, by the grievant and the reviewer(s).
3. A grievant's failure to submit a grievance, or to appeal it to the next level of procedure within the specified time limits shall mean that the grievant has withdrawn the grievance or has accepted the last response from the Department given during the grievance procedure.
4. Applicants or employees should file grievances promptly, but no later than 180 calendar days after the denial of the request for reasonable accommodation. The grievance shall be submitted to:

Illinois Department of Juvenile Justice
2715 West Monroe
Springfield, IL 62704
Attention: ADA Coordinator
5. The Department ADA Coordinator shall ensure the grievance is investigated and reasonable efforts are made to resolve it. The investigation may include an interview with the grievant where determined necessary by the ADA Coordinator. The ADA Coordinator shall submit a written response to the grievant within 45 working days after receipt of the grievance.
6. If the grievance is not resolved to the satisfaction of the grievant, the grievant may appeal the ADA Coordinator's decision to:

ADMINISTRATIVE DIRECTIVE	Effective 11/1/2016	Page 7 of 7	Number 03.01.305
-------------------------------------	-------------------------------	-----------------------	----------------------------

Illinois Department of Juvenile Justice
2715 West Monroe
Springfield, IL 6274
Attention: ADA Appeal

7. Appeals shall be submitted in writing within 15 working days of the date of the ADA Coordinator's response. Written appeals should include:
 - a. A brief statement explaining the reasons for dissatisfaction with the ADA Coordinator's response.
 - b. A statement indicating whether or not the grievant wishes to appear before the person or persons appointed by the Director.
 - c. A copy of the grievance form and the ADA Coordinator's response; and
 - d. Any other supporting materials.
8. The Director shall appoint a person or persons to review the appeal.
9. The grievant may be afforded the opportunity to appear before the appointed person or persons if so requested in the written appeal.
- 10 The appointed person or persons shall:
 - a. Review the grievance form and the ADA Coordinator's written response.
 - b. Consider any additional evidence submitted by the grievant.
 - c. Conduct interviews and seek advice as deemed appropriate; and
 - d. Make recommendations to the Director in writing.
11. Within 15 business days after receipt of the recommendation the Director shall approve, disapprove, or modify the recommendations in writing and shall state the basis for his or her decision. The Director's written decision shall be sent to the grievant, and the ADA Coordinator. The Director's decision shall be final.

Authorized by:

[Original Authorized Copy on File]

Jesse Montgomery
Acting Director

Supersedes:

03.01.305

AD

5/1/1994

(EXHIBIT 2)

Applicant or Employee Request for Reasonable Accommodation

To Be Completed By The Requestor:

Applicant ☐

Employee ☐

Name: _____ Position Title: _____

Work/Interview Location: _____

Address (where you can be contacted): _____

Telephone #: _____ Voice: _____ City _____ State _____ Zip Code _____ TDD: _____

Best Means and Time for Contacting: _____

What is the disability which requires accommodation? _____

For what functions of the job requirements do you need an accommodation? _____

Reasonable Accommodation Requested: _____

Describe why the accommodation is necessary: _____

List items of equipment, physical modifications of existing work tools, or procedural changes to operations needed to implement the requested accommodation (such as TDD or optical reader, commodity, or service): _____

Describe any alternative accommodations: _____

Any other information you believe will aid in a fair determination of this request: _____

(If additional space is needed, use additional paper and attach)

Applicant/Employee Signature

Date

This form is to be forwarded to your supervisor/interviewing officer. The Department's ADA Grievance Procedure is set forth in DR475 (20 Illinois Admin. Code 475).

If you require assistance in completing this form, please contact your supervisor/interviewing officer or the Office of Affirmative Action (217) 557-1030.

To Be Completed by Chief Administrator:

Date Received: _____

Comments/Recommendation: _____

Chief Administrator Signature

Date

Forward original form to: Office of Affirmative Action
2715 West Monroe
Springfield, IL 62704

To Be Completed by Affirmative Action Administrator:

Date Received: _____

Comments/Recommendation: _____

Affirmative Action Administrator Signature

Date

Denial of a request for reasonable accommodation by the Affirmative Action Administrator can be grieved by submitting a written grievance to ADA Coordinator, Illinois Department of Juvenile Justice, 2715 West Monroe Street, Springfield, IL 62704, Attention: ADA Grievance.

Distribution: Supervisor
Chief Administrator
Office of Affirmative Action

DJJ 0238 (11/2016)
(Replaces DOC 0238)

PART VI

PART VI

APPLICABLE EQUAL EMPLOYMENT OPPORTUNITY LAWS

The Department of Juvenile Justice is mandated to adhere to numerous federal laws and the Illinois Human Rights Act.

FEDERAL

1. Title VII of the Civil Rights Act of 1964 (Title VII), prohibiting discrimination in employment on the basis of race, color, religion, sex, or national origin (42 U.S.C. Section 20003-5);
2. The Equal Pay Act of 1963 (EPA), prohibiting differences in pay between men and women when performing substantially equivalent jobs (29 U.S.C. Sections 206(d)(1);
3. The Age Discrimination in Employment Act (ADEA), as amended, prohibiting discrimination against individuals who are 40 and over (29 U.S.C. Section 626, et. seq.);
4. Section 1981 of the Civil Rights Act of 1866 (Section 1981), prohibiting discrimination on the basis of race and national origin (42 U.S.C. Section 1981);
5. Section 1983 of the Civil Rights Act of 1871 (Section 1983), prohibiting discrimination on the basis of race, sex, and national origin by public employers (42 U.S.C. Section 1983);
6. The Rehabilitation Act of 1973, prohibiting discrimination against persons with physical or mental disabilities (29 U.S.C. Section 701, et. seq.);
7. The Vietnam Era Veterans Readjustment Act of 1974, requires employers with federal contracts or federal assistance to take affirmative action to employ veterans (38 U.S.C. Section 101, et. seq.);
8. Title VI of the Civil Rights Act of 1964, prohibiting discrimination on the basis of race, color or national origin in any program or activity receiving financial assistance from the U.S. Department of Education; and
9. The Americans With Disabilities Act, prohibiting discrimination against persons with disabilities and requiring that government programs, services and activities are accessible to persons with disabilities (42 U.S.C. 12101, et. seq.).
10. The Civil Rights Act of 1991, providing for damages for intentional discrimination and unlawful harassment in the workplace and codifying the concepts of “business necessity” and “job related” and providing guidelines on “disparate impact” (P.L. 102-166); and
11. The Family Medical Leave Act (FMLA), requires employers to provide up to 12 weeks of unpaid job protected leave to eligible employees for certain family and medical reasons (29 U.S.C. Section 2601, et seq.).

12. The Uniformed Services Employment and Reemployment Rights Act (USERRA) protects the job rights of individuals who voluntarily or involuntarily leave employment positions to undertake military service. USERRA also prohibits employers from discriminating against past or present members of the uniformed services, and applicants to the uniformed services. The U.S. Department of Labor, Veterans Employment and Training Services (VETS) is authorized to investigate and resolve complaints of USERRA violations.

STATE

1. The Illinois Human Rights Act prohibits discrimination because of race, color, religion, sex, sexual orientation, national origin, ancestry, age, marital status, military status, physical or mental disability, citizenship status or unfavorable discharge from military service. Harassment and retaliation are also prohibited.
2. The Equal Pay Act of 2003 prohibits employers from paying unequal wages to men and women for doing the same or substantially similar work. (P.A. 93-0006)
3. Victims Economic Safety and Security Act (VESSA), provides that employers may not discharge or discriminate against an employee who is the victim of domestic violence or who has a family or household member who is a victim of domestic violence and allows for leave to address domestic violence issues. (P.A. 93-0591)

PART VII

PART VII

AVAILABILITY ANALYSIS

Introduction

The Department of Human Rights (DHR) has developed a methodology for State entities to use to prepare a written Affirmative Action Plan (AAP). The objective of this methodology is to provide a responsible way to compare the availability of minorities and females to the work force of each State entity. The computation described on the following pages results in an Availability Percentage for each appropriate protected class in each job category.

The availability analysis provides a numerical measure of parity achieved by comparing the work force of each State entity with the availability of the minority groups and females in its appropriate surrounding labor area(s). The resulting number becomes the ultimate goal of the agency. Comparison of the availability numbers and the actual number of minorities and females currently employed by the agency will indicate whether or not the agency is underutilizing minorities and females, and to what extent. Minimum numerical compliance in each job category for each group of minorities and females will be accomplished by the agency when it has reached eighty percent of its numerical goal. However, agencies are encouraged to reach 100% parity.

In order to assist State entities in computing Availability Percentages (AP's) for each minority group in each EEO job category, DHR has divided the State into ten (10) regions, based upon population, work force statistics, proximity of metropolitan areas and community patterns.

The Department of Human Rights provides statistics, by region, for the two (2) Factors below:

Factor #1 -- Those having requisite skills in the region

Factor #2 -- Those promotable, trainable and transferable in the region.

Internal Work Force Analysis

One of the fundamental steps in developing an Affirmative Action Plan is to conduct an in-depth assessment of the State entity's personnel transactions, i.e., distribution of present employees, new hires, promotions, demotions, transfers, terminations, superior performance increases and salary comparison by race, sex and EEO category. Standard forms will be provided by the Department of Human Rights for State entities to submit this information.

All past and current personnel practices must be analyzed for present effect. The internal work force review should consist of, but is not limited to the following:

- Assessment of the agency's past and current EEO program.
- Review of written personnel policies, procedures, and regulations to assure absence of discriminatory content.
- Review of all qualifications and requirements, including education, prior work experience and physical abilities to insure job relatedness.
- Past and current hiring and promotion patterns.

External Labor Force Analysis

When the internal work force analysis has been completed, the next step is to complete an external labor force analysis to determine the availability of minorities and females to the work force of the agency.

The internal work force analysis combined with the external work force analysis will be used to determine if minorities or females are being underutilized in any EEO category at each facility.

Calculating Agency Underutilization

The determination of whether an agency is underutilized any protected class is made by performing the following steps:

1. Using the figures from the workforce analysis form DHR-9:
 - a. Indicate present number of employees. However, do not calculate utilization for categories that have less than ten (10) total employees because the number are too small to yield statistical reliability.
 - b. Number of affirmative action group members already employed.
2. Enter the availability percentage (AP) in line 2, which comes from the AP worksheet (DHR-5) for the appropriate affirmative action group.
3. Multiply the present number of employees by the AP and enter the result in the Number Needed for Parity (line 3). If the result includes a fraction, round down to the closest whole number.
4. Subtract the number of affirmative action group members already employed (line 4) from Number Needed for Parity (line 3). If the number affirmative action group members already employed is greater than the Number Needed for Parity, parity has been achieved and a "P" for parity, should be entered in line 5. If the result is a positive number, underutilization exist for the affirmative action group and job category. This number represents additional persons needed in the category to eliminate regional underutilization.

PROMOTABLE CATEGORIES

Officials/Administrators

Professionals

Technicians

Professionals

Technicians

Paraprofessional

Administrative Support

Technicians

Paraprofessional

Administrative Support

Paraprofessionals

Administrative Support

Administrative Support

Skilled Craft

Service/Maintenance

FACILITIES BY REGION

Region I

IYC Chicago
IYC - St. Charles
IYC – Warrenville

Region VII

Correctional Industries
Central Office
Training Academy
Information Services Unit

Region VIII

IYC - Pere Marquette

Region X

IYC - Harrisburg

Note:

School District 428 and Aftercare has a location in each region.

POSITION TITLES BY EEO JOB CATEGORY

OFFICIALS/ADMINISTRATORS

Food Services Program Manager
Public Service Administrator
Senior Public Service Administrator

PROFESSIONALS

Accountant
Accountant Advanced
Accountant Supervisor
Administrative Assistant I, II
Business Administrative Specialist
Business Manager
Chaplain I & II
Clinical Services Supervisor
Correctional Casework Supervisor
Correctional Counselor I, II & III
Corrections Law Library Assistant (pending)
Corrections Leisure Activity Specialist I, II, III, IV
Corrections Nurse Trainee
Corrections Nurse I & II
Educational Diagnostician
Educator
Executive I & II
Hearing & Speech Advanced Specialist
Human Resources Representative
Internal Auditor
Juvenile Justice School Counselor
Juvenile Justice Specialist Intern
Juvenile Justice Chief of Security
Juvenile Justice Specialist
Juvenile Justice Specialist Supervisor
Juvenile Justice Youth & Family Specialist
Juvenile Justice Youth & Family Specialist Supervisor
Librarian I
Library Associate
Paralegal Assistant
Psychologist I, II & III
School Psychologist
Social Worker I, II, III & IV
Special Education Resource Coordinator
Staff Development Specialist I
Technical Advisor I & II

POSITION TITLES BY EEO JOB CATEGORY (CONT.)

TECHNICIANS

Account Technician I & II

Corrections Identification Technician

Corrections Vocational Instructor

Graphic Arts Technician

PARAPROFESSIONAL

Dental Assistant

Executive Secretary I, II & III

Health Information Technician

Office Administrator III, IV & V

Office Administrator Specialist

Office Coordinator

ADMINISTRATIVE SUPPORT

Account Clerk I & II

Communications Dispatcher

Office Administrator I & II

Office Clerk

Office Assistant

Office Associate

Switchboard Operator I, II & III

SKILLED CRAFT

Automotive Mechanic

Carpenter

Corrections Locksmith

Corrections Maintenance Craftsman

Electrician

Painter

Plumber

Stationary Engineer – Chief, Assistant Chief

Steamfitter

Teacher of Barbering

Teacher of Beauty Culture

SERVICE/MAINTENANCE

Corrections Food Service Supervisor I, II & III

Corrections Ground Supervisor

Corrections Laundry Manager I & II

Corrections Maintenance Worker

Corrections Supply Supervisor I, II & III

Laborer (Building)

Maintenance Equipment Operator

Maintenance Worker (Power Plant)

Stationary Fireman

Trades Tender

EXIT INTERVIEW

The Exit Interview Form (DJJ 0122) is an internal monitoring device used by the Office of Affirmative Action for identifying potential problem areas. Upon separation from employment with the Department of Juvenile Justice, each individual should be given an Exit Interview Form (EXHIBIT 3) along with a stamped envelope addressed to the Office of Affirmative Action in Chicago. While the completion of this form by the separating employee is optional, the facility should be able to document the fact that the employee was provided with an Exit Interview Form.

The answers are confidential and will not be used against the employee and will not be made a part of the employee's personnel file.

Exit Interview forms are maintained by the Office of Affirmative Action in a separate file for review by the Department of Human Rights.

(EXHIBIT 3)

Illinois Department of Juvenile Justice
Office of Affirmative Action
Employee Exit Interview

This form is to be completed by the employee **only** when leaving Department employment. The information provided in this document is voluntary and confidential and cannot be used against the employee.

Employee's Name		Work Location	
Address		City	Zip Code
Job Title		Date of Birth	Sex: <input type="checkbox"/> Male <input type="checkbox"/> Female
Race: <input type="checkbox"/> White <input type="checkbox"/> African American <input type="checkbox"/> Asian <input type="checkbox"/> Native American <input type="checkbox"/> Hispanic <input type="checkbox"/> Other: _____			
Beginning Salary		Ending Salary	Work Hours

	Yes	No		Yes	No
1. Would you work here again?	<input type="checkbox"/>	<input type="checkbox"/>	3. Were you satisfied with:		
If yes:			a. Salary?	<input type="checkbox"/>	<input type="checkbox"/>
a. Same position?	<input type="checkbox"/>	<input type="checkbox"/>	b. Working conditions?	<input type="checkbox"/>	<input type="checkbox"/>
b. Same supervisor?	<input type="checkbox"/>	<input type="checkbox"/>	c. Supervisory personnel?	<input type="checkbox"/>	<input type="checkbox"/>
c. Same hours?	<input type="checkbox"/>	<input type="checkbox"/>	d. Supervision by immediate supervisor?	<input type="checkbox"/>	<input type="checkbox"/>
<small>NOTE: Individuals certified as Correctional Officers and Youth Supervisor IIs who leave the department in good standing may seek reinstatement by applying directly to any facility within the Department.</small>			e. Interaction with supervisory personnel?	<input type="checkbox"/>	<input type="checkbox"/>
2. Do you have a new job?	<input type="checkbox"/>	<input type="checkbox"/>	f. Interaction with peers?	<input type="checkbox"/>	<input type="checkbox"/>
If yes:			g. Staff development and training?	<input type="checkbox"/>	<input type="checkbox"/>
a. Did your salary increase?	<input type="checkbox"/>	<input type="checkbox"/>	h. Promotional opportunity?	<input type="checkbox"/>	<input type="checkbox"/>
b. Type of work: _____			i. Disciplinary process?	<input type="checkbox"/>	<input type="checkbox"/>
_____			j. Communication of information?	<input type="checkbox"/>	<input type="checkbox"/>
_____			k. Performance evaluation process?	<input type="checkbox"/>	<input type="checkbox"/>

4. Did you personally experience any discrimination while working in your position? ☐ Yes ☐ No

If yes:

a. Who discriminated against you (check any that apply)?

☐ Peers ☐ Immediate Supervisory Personnel ☐ Administrative Managers

b. Discrimination was based on (check any that apply):

☐ Race ☐ Color ☐ National Origin or Ancestry ☐ Religion ☐ Sex ☐ Sexual Orientation
☐ Age ☐ Disability ☐ Arrest Record ☐ Marital Status ☐ Military Status ☐ Citizenship Status

Briefly describe: _____

5. Were you a witness to acts of discrimination against other employees? ☐ Yes ☐ No

If yes:

a. Who was discriminating (check any that apply)?

☐ Peers ☐ Immediate Supervisory Personnel ☐ Administrative Managers

b. Discrimination was based on (check any that apply):

☐ Race ☐ Color ☐ National Origin or Ancestry ☐ Religion ☐ Sex ☐ Sexual Orientation
☐ Age ☐ Disability ☐ Arrest Record ☐ Marital Status ☐ Military Status ☐ Citizenship Status

Briefly describe: _____

If you resigned, briefly explain your reason for leaving: _____

If you were discharged, briefly provide the reason given to you: _____

Recommendation for improving the Department: _____

Employee's Signature

Date

The employee is to mail the completed form to the: Office of Affirmative Action
2715 West Monroe Street
Springfield, IL 62704

HIRING AND PROMOTION MONITOR

New hires and promotions shall be monitored by the Office of Affirmative Action. The Hiring and Promotion Monitor Forms are used by the Office of Affirmative Action for reviewing information relating to new hires and promotions. The forms are reviewed by the Department of Human Rights.

HIRING MONITOR

Name of Agency: _____ Candidate's Name: _____
City / County: _____ Position Number: _____
IDHR Region / (Facility): _____
EEO Job Category: _____ Bid Number: _____
Title of Job to be filled: _____ Date of Hire: _____

1. Is the EEO category underutilized? ☐ No ☐ Yes If yes, indicate number for each group:

Women: _____ Black or African American: _____ Hispanic or Latino: _____
Asian: _____ American Indian or Alaskan Native: _____
Native Hawaiian or Other Pacific Islander: _____ People with Disabilities: _____

2. Indicate: Race of person selected: ☐ (Choose One) ☐
Sex: ☐ (Choose One) ☐ Veteran: ☐ Yes ☐ Disability: ☐ Yes ☐

3. Number of individuals who applied or were on the list of eligible(s)

Total by Category	# Invited	# Interviewed	# Selected
Women			
Black or African American			
Hispanic or Latino			
Asian			
American Indian or Alaskan Native			
Native Hawaiian or Other Pacific Islander			
People with Disabilities			
Veterans			

4. If no candidates from any of the underutilized groups appeared on the list, what efforts were made in the last six months to assist in the recruitment of candidates?

5. If the category is underutilized and a member of an affirmative action group applied and was not hired, give a detailed explanation for the hiring decision.

6. Was the position posted? ☐ Yes ☐

7. Name and position of person(s) who interviewed candidates.

8. Name and position of person(s) who recommended the selection of the candidate.

I have reviewed the eligibility list and: ☐ (Choose One) ☐ with this hire. Remarks on reverse side.

EEO/AA Officer Date

I approve of this hire

Chief Executive Officer Date

No appointment will be processed without this form. [DHR Rules and Regulations Section 2520.770(h)]

PROMOTION MONITOR

Name of Agency: _____ Candidate's Name: _____
City / County _____ Position Number: _____
IDHR Region / (Facility) _____ Bid Number: _____
EEO Job Category: _____ Date of Promotion: _____
Title of Job to be filled: _____

1. Is the EEO category underutilized? If yes, indicate number for each group:

Women: _____ Black or African American: _____ Hispanic or Latino: _____
Asian: _____ American Indian or Alaskan Native: _____
Native Hawaiian or Other Pacific Islander: _____ People with Disabilities* _____

2. Indicate the race and sex of person promoted:

3. Number of individuals who applied or were on the list of promotable(s): _____

Total by Category	# Invited	# Interviewed	# Selected
Women	_____	_____	_____
Black or African American	_____	_____	_____
Hispanic or Latino	_____	_____	_____
Asian	_____	_____	_____
American Indian or Alaskan Native	_____	_____	_____
Native Hawaiian or Other Pacific Islander	_____	_____	_____
People with Disabilities	_____	_____	_____
Veterans	_____	_____	_____

4. Did it change the employee's EEO Job Category?
If yes, from what EEO job Category?

5. If the category is underutilized and a member of an affirmative action group applied and was not promoted give a detailed explanation.

6. Was the position posted?

7. Name and position of person(s) who interviewed candidates.

8. Name and position of person(s) who recommended the selection of the candidate.

I have reviewed the eligibility list and: with this promotion. Remarks on reverse side.

EEO/AA Officer Date

I approve of this hire

Chief Executive Officer Date

No appointment will be processed without this form. [DHR Rules and Regulations Section 2520.770(h)]

Appendix A

Summary of Workforce Transaction Report By EEO Category

Workforce Transactions Report by EEO Category

Agency: Juvenile Justice Reporting Period: 7/1/2021 - 6/30/2022

EEO Category: OFFICIALS / ADMINISTRATORS

Transaction	MALES										FEMALES										PERCENTAGES									
	W					Total					W					Total					W					Total				
	B/AA	H/L	A	AI	NH	B/AA	H/L	A	AI	NH	B/AA	H/L	A	AI	NH	B/AA	H/L	A	AI	NH	B/AA	H/L	A	AI	NH	B/AA	H/L	A	AI	NH
New Hires	4	2				2					2					2					50.00%	0.00%	0.00%	0.00%	0.00%	100.00%	0.00%	0.00%	0.00%	0.00%
Promotions	2	1				1					1					1					50.00%	0.00%	0.00%	0.00%	0.00%	100.00%	0.00%	0.00%	0.00%	0.00%
Intra-Agency Transfers	2	0				2					2					2					100.00%	0.00%	0.00%	0.00%	0.00%	0.00%	0.00%	0.00%	0.00%	0.00%
Suspensions	0	0				0					0					0					0.00%	0.00%	0.00%	0.00%	0.00%	0.00%	0.00%	0.00%	0.00%	0.00%
Separations	7	4	3	1		3	2	1			3	2	1			57.14%	14.29%	0.00%			28.57%	57.14%	0.00%	0.00%	0.00%	0.00%	0.00%	0.00%	0.00%	0.00%
Discharges	0	0				0					0					0.00%	0.00%	0.00%			0.00%	0.00%	0.00%	0.00%	0.00%	0.00%	0.00%	0.00%	0.00%	0.00%
Lay Off	0	0				0					0					0.00%	0.00%	0.00%			0.00%	0.00%	0.00%	0.00%	0.00%	0.00%	0.00%	0.00%	0.00%	0.00%
Demotions	0	0				0					0					0.00%	0.00%	0.00%			0.00%	0.00%	0.00%	0.00%	0.00%	0.00%	0.00%	0.00%	0.00%	0.00%
Reductions	0	0				0					0					0.00%	0.00%	0.00%			0.00%	0.00%	0.00%	0.00%	0.00%	0.00%	0.00%	0.00%	0.00%	0.00%
Reinstatements	0	0				0					0					0.00%	0.00%	0.00%			0.00%	0.00%	0.00%	0.00%	0.00%	0.00%	0.00%	0.00%	0.00%	0.00%
Reemployment	0	0				0					0					0.00%	0.00%	0.00%			0.00%	0.00%	0.00%	0.00%	0.00%	0.00%	0.00%	0.00%	0.00%	0.00%
Upward Reallocations	0	0				0					0					0.00%	0.00%	0.00%			0.00%	0.00%	0.00%	0.00%	0.00%	0.00%	0.00%	0.00%	0.00%	0.00%
Downward Reallocations	0	0				0					0					0.00%	0.00%	0.00%			0.00%	0.00%	0.00%	0.00%	0.00%	0.00%	0.00%	0.00%	0.00%	0.00%

W=White B/AA=Black or African American H/L=Hispanic or Latino A=Asian AI/AN=American Indian or Alaskan Native NHOPI=Native Hawaiian or Other Pacific Islander PWD=People with Disabilities

Workforce Transactions Report by EEO Category

Agency:	Juvenile Justice										Reporting Period: 7/1/2021 - 6/30/2022									
EEO Category:	PROFESSIONALS																			
Transaction	MALES										FEMALES									
	Total					W					Total					W				
	Grand Total	W	B/A	H/L	A	AI	NH	OPI	PWD		Grand Total	W	B/A	H/L	A	AI	NH	OPI	PWD	
New Hires	39	19	10	8	1					20	10	10	10							48.72%
Promotions	0	0								0										51.28%
Intra-Agency Transfers	2	0								2	1	1	1							0.00%
Suspensions	49	21	10	10	1					28	10	18								57.14%
Separations	81	50	21	21	6	2				31	10	16	3	2						40.82%
Discharges	8	2	2							6	2	4								38.27%
Lay Off	0	0								0										75.00%
Demotions	0	0								0										25.00%
Reductions	3	2	2							1	1	1								0.00%
Reinstatements	0	0								0										0.00%
Reemployment	0	0								0										33.33%
Upward Reallocations	0	0								0										0.00%
Downward Reallocations	0	0								0										0.00%
	0	0								0										0.00%

W=White B/A=Black or African American H/L=Hispanic or Latino A=Asian AI/AN=American Indian or Alaskan Native NHOPI=Native Hawaiian or Other Pacific Islander PWD=People with Disabilities

Workforce Transactions Report by EEO Category

Agency:	Juvenile Justice	Reporting Period: 7/1/2021 - 6/30/2022																																																																																																																																																																																																																																																																																																																																																																																																																																																																																																																																																																																																																																																																																																																																																																																																																																																																																																																																																																																																																																																																																																																																																																																																																																																																																																																																																																																																										
EEO Category:	PARAPROFESSIONALS																																																																																																																																																																																																																																																																																																																																																																																																																																																																																																																																																																																																																																																																																																																																																																																																																																																																																																																																																																																																																																																																																																																																																																																																																																																																																																																																																																																																											
Transaction	Grand Total	MALES							FEMALES																																																																																																																																																																																																																																																																																																																																																																																																																																																																																																																																																																																																																																																																																																																																																																																																																																																																																																																																																																																																																																																																																																																																																																																																																																																																																																																																																																																																			
		Total	W	B/AA	H/L	A	AI	NH	Total	W	B/AA	H/L	A	AI	NH																																																																																																																																																																																																																																																																																																																																																																																																																																																																																																																																																																																																																																																																																																																																																																																																																																																																																																																																																																																																																																																																																																																																																																																																																																																																																																																																																																																													
		PERCENTAGES																																																																																																																																																																																																																																																																																																																																																																																																																																																																																																																																																																																																																																																																																																																																																																																																																																																																																																																																																																																																																																																																																																																																																																																																																																																																																																																																																																																																										
New Hires	1	0							1			1																																																																																																																																																																																																																																																																																																																																																																																																																																																																																																																																																																																																																																																																																																																																																																																																																																																																																																																																																																																																																																																																																																																																																																																																																																																																																																																																																																																																

W=White B/AA=Black or African American H/L=Hispanic or Latino A=Asian AI/AN=American Indian or Alaskan Native NH=Native Hawaiian or Other Pacific Islander PWD=People with Disabilities

Workforce Transactions Report by EEO Category

Reporting Period: 7/1/2021 - 6/30/2022

Agency: Juvenile Justice

EEO Category: ADMINISTRATIVE SUPPORT

Transaction	Grand Total	MALES										FEMALES										PERCENTAGES									
		W					Total					B/AA					H/L					A					AI				
		W	B/AA	H/L	A	AI	W	B/AA	H/L	A	AI	W	B/AA	H/L	A	AI	W	B/AA	H/L	A	AI	W	B/AA	H/L	A	AI	W	B/AA	H/L	A	AI
New Hires	0	0					0										0.00%	0.00%	0.00%	0.00%	0.00%	0.00%	0.00%	0.00%	0.00%	0.00%	0.00%	0.00%	0.00%	0.00%	0.00%
Promotions	0	0					0										0.00%	0.00%	0.00%	0.00%	0.00%	0.00%	0.00%	0.00%	0.00%	0.00%	0.00%	0.00%	0.00%	0.00%	0.00%
Intra-Agency Transfers	0	0					0										0.00%	0.00%	0.00%	0.00%	0.00%	0.00%	0.00%	0.00%	0.00%	0.00%	0.00%	0.00%	0.00%	0.00%	0.00%
Suspensions	0	0					0										0.00%	0.00%	0.00%	0.00%	0.00%	0.00%	0.00%	0.00%	0.00%	0.00%	0.00%	0.00%	0.00%	0.00%	0.00%
Separations	2	0					2	1	1								100.00%	50.00%	0.00%	0.00%	0.00%	0.00%	0.00%	0.00%	0.00%	0.00%	0.00%	0.00%	0.00%	0.00%	0.00%
Discharges	0	0					0										0.00%	0.00%	0.00%	0.00%	0.00%	0.00%	0.00%	0.00%	0.00%	0.00%	0.00%	0.00%	0.00%	0.00%	0.00%
Lay Off	0	0					0										0.00%	0.00%	0.00%	0.00%	0.00%	0.00%	0.00%	0.00%	0.00%	0.00%	0.00%	0.00%	0.00%	0.00%	0.00%
Demotions	0	0					0										0.00%	0.00%	0.00%	0.00%	0.00%	0.00%	0.00%	0.00%	0.00%	0.00%	0.00%	0.00%	0.00%	0.00%	0.00%
Reductions	0	0					0										0.00%	0.00%	0.00%	0.00%	0.00%	0.00%	0.00%	0.00%	0.00%	0.00%	0.00%	0.00%	0.00%	0.00%	0.00%
Reinstatements	0	0					0										0.00%	0.00%	0.00%	0.00%	0.00%	0.00%	0.00%	0.00%	0.00%	0.00%	0.00%	0.00%	0.00%	0.00%	0.00%
Reemployment	0	0					0										0.00%	0.00%	0.00%	0.00%	0.00%	0.00%	0.00%	0.00%	0.00%	0.00%	0.00%	0.00%	0.00%	0.00%	0.00%
Upward Reallocations	0	0					0										0.00%	0.00%	0.00%	0.00%	0.00%	0.00%	0.00%	0.00%	0.00%	0.00%	0.00%	0.00%	0.00%	0.00%	0.00%
Downward Reallocations	0	0					0										0.00%	0.00%	0.00%	0.00%	0.00%	0.00%	0.00%	0.00%	0.00%	0.00%	0.00%	0.00%	0.00%	0.00%	0.00%

W=White B/AA=Black or African American H/L=Hispanic or Latino A=Asian AI/AN=American Indian or Alaskan Native NH/OPI=Native Hawaiian or Other Pacific Islander PWD=People with Disabilities

**Workforce Transactions Report
by EEO Category**

Agency:	Juvenile Justice	Reporting Period: 7/1/2021 - 6/30/2022																																																																																																																																																																																																																																																																																																																																																																																																																																																																																																																
EEO Category:	SERVICE / MAINTENANCE																																																																																																																																																																																																																																																																																																																																																																																																																																																																																																																	
Transaction	Grand Total	MALES							FEMALES							PERCENTAGES																																																																																																																																																																																																																																																																																																																																																																																																																																																																																																		
		Total	W	B/AA	H/L	A	AI AN	NH OPI	PWD	Total	W	B/AA	H/L	A	AI AN	NH OPI	PWD	A	H/L	B/AA	W	F	M	0.00%	0.00%	100.00%	0.00%	0.00%	0.00%	0.00%	0.00%	0.00%	0.00%	0.00%	0.00%	0.00%	0.00%	0.00%	0.00%	0.00%	0.00%	0.00%	0.00%	0.00%	0.00%	0.00%	0.00%	0.00%	0.00%	0.00%	0.00%	0.00%	0.00%	0.00%	0.00%	0.00%	0.00%	0.00%	0.00%	0.00%	0.00%	0.00%	0.00%	0.00%	0.00%	0.00%	0.00%	0.00%	0.00%	0.00%	0.00%	0.00%	0.00%	0.00%	0.00%	0.00%	0.00%	0.00%	0.00%	0.00%	0.00%	0.00%	0.00%	0.00%	0.00%	0.00%	0.00%	0.00%	0.00%	0.00%	0.00%	0.00%	0.00%	0.00%	0.00%	0.00%	0.00%	0.00%	0.00%	0.00%	0.00%	0.00%	0.00%	0.00%	0.00%	0.00%	0.00%	0.00%	0.00%	0.00%	0.00%	0.00%	0.00%	0.00%	0.00%	0.00%	0.00%	0.00%	0.00%	0.00%	0.00%	0.00%	0.00%	0.00%	0.00%	0.00%	0.00%	0.00%	0.00%	0.00%	0.00%	0.00%	0.00%	0.00%	0.00%	0.00%	0.00%	0.00%	0.00%	0.00%	0.00%	0.00%	0.00%	0.00%	0.00%	0.00%	0.00%	0.00%	0.00%	0.00%	0.00%	0.00%	0.00%	0.00%	0.00%	0.00%	0.00%	0.00%	0.00%	0.00%	0.00%	0.00%	0.00%	0.00%	0.00%	0.00%	0.00%	0.00%	0.00%	0.00%	0.00%	0.00%	0.00%	0.00%	0.00%	0.00%	0.00%	0.00%	0.00%	0.00%	0.00%	0.00%	0.00%	0.00%	0.00%	0.00%	0.00%	0.00%	0.00%	0.00%	0.00%	0.00%	0.00%	0.00%	0.00%	0.00%	0.00%	0.00%	0.00%	0.00%	0.00%	0.00%	0.00%	0.00%	0.00%	0.00%	0.00%	0.00%	0.00%	0.00%	0.00%	0.00%	0.00%	0.00%	0.00%	0.00%	0.00%	0.00%	0.00%	0.00%	0.00%	0.00%	0.00%	0.00%	0.00%	0.00%	0.00%	0.00%	0.00%	0.00%	0.00%	0.00%	0.00%	0.00%	0.00%	0.00%	0.00%	0.00%	0.00%	0.00%	0.00%	0.00%	0.00%	0.00%	0.00%	0.00%	0.00%	0.00%	0.00%	0.00%	0.00%	0.00%	0.00%	0.00%	0.00%	0.00%	0.00%	0.00%	0.00%	0.00%	0.00%	0.00%	0.00%	0.00%	0.00%	0.00%	0.00%	0.00%	0.00%	0.00%	0.00%	0.00%	0.00%	0.00%	0.00%	0.00%	0.00%	0.00%	0.00%	0.00%	0.00%	0.00%	0.00%	0.00%	0.00%	0.00%	0.00%	0.00%	0.00%	0.00%	0.00%	0.00%	0.00%	0.00%	0.00%	0.00%	0.00%	0.00%	0.00%	0.00%	0.00%	0.00%	0.00%	0.00%	0.00%	0.00%	0.00%	0.00%	0.00%	0.00%	0.00%	0.00%	0.00%	0.00%	0.00%	0.00%	0.00%	0.00%	0.00%	0.00%	0.00%	0.00%	0.00%	0.00%	0.00%	0.00%	0.00%	0.00%	0.00%	0.00%	0.00%	0.00%	0.00%	0.00%	0.00%	0.00%	0.00%	0.00%	0.00%	0.00%	0.00%	0.00%	0.00%	0.00%	0.00%	0.00%	0.00%	0.00%	0.00%	0.00%	0.00%	0.00%	0.00%	0.00%	0.00%	0.00%	0.00%	0.00%	0.00%	0.00%	0.00%	0.00%	0.00%	0.00%	0.00%	0.00%	0.00%	0.00%	0.00%	0.00%	0.00%	0.00%	0.00%	0.00%	0.00%	0.00%	0.00%	0.00%	0.00%	0.00%	0.00%	0.00%	0.00%	0.00%	0.00%	0.00%	0.00%	0.00%	0.00%	0.00%	0.00%	0.00%	0.00%	0.00%	0.00%	0.00%	0.00%	0.00%	0.00%	0.00%	0.00%	0.00%	0.00%	0.00%	0.00%	0.00%	0.00%	0.00%	0.00%	0.00%	0.00%	0.00%	0.00%	0.00%	0.00%	0.00%	0.00%	0.00%	0.00%	0.00%	0.00%	0.00%	0.00%	0.00%	0.00%	0.00%	0.00%	0.00%	0.00%	0.00%	0.00%	0.00%	0.00%	0.00%	0.00%	0.00%	0.00%	0.00%	0.00%	0.00%	0.00%	0.00%	0.00%	0.00%	0.00%	0.00%	0.00%	0.00%	0.00%	0.00%	0.00%	0.00%	0.00%	0.00%	0.00%	0.00%	0.00%	0.00%	0.00%	0.00%	0.00%	0.00%	0.00%	0.00%	0.00%	0.00%	0.00%	0.00%	0.00%	0.00%	0.00%	0.00%	0.00%	0.00%	0.00%	0.00%	0.00%	0.00%	0.00%	0.00%	0.00%	0.00%	0.00%	0.00%	0.00%	0.00%	0.00%	0.00%	0.00%	0.00%	0.00%	0.00%	0.00%	0.00%	0.00%	0.00%	0.00%	0.

W=White B/A=Black or African American H/L=Hispanic or Latino A=Asian AI/AN=American Indian or Alaskan Native NH/OPI=Native Hawaiian or Other Pacific Islander PWD=People with Disabilities

Appendix B

Workforce Summary by Region

Workforce Analysis by Region

Agency: Department of Juvenile Justice

Reporting Period: 6/30/22

Region: 2

Grand Total		MALES						FEMALES						PERCENTAGES							
		Total	W	BAA	H/L	A	AI / AN	NH OPI	PWD	Total	W	BAA	H/L	A	AI / AN	NH OPI	PWD	A	AI/AN	NH/OPI	PWD
Officials / Administrators	0	0								0								0.00%	0.00%	0.00%	0.00%
Professionals	5	0								5	3	2						60.00%	40.00%	0.00%	0.00%
Technicians	0	0								0								0.00%	0.00%	0.00%	0.00%
Protective Service	0	0								0								0.00%	0.00%	0.00%	0.00%
Para-professionals	0	0								0								0.00%	0.00%	0.00%	0.00%
Administrative Support	0	0								0								0.00%	0.00%	0.00%	0.00%
Skilled Craft	0	0								0								0.00%	0.00%	0.00%	0.00%
Service / Maintenance	0	0								0								0.00%	0.00%	0.00%	0.00%
TOTAL	5	0	0	0	0	0	0	0	0	5	3	2	0	0	0	0	0	60.00%	40.00%	0.00%	0.00%

Grand Total Employees for Region 2:				Males:		Females:		Total Minorities:			
				0		5		2			
				0.00%		100.00%		40.00%			
White: 3				Black/African American: 2		Hispanic/Latino: 0		Asian: 0		AI/AN: 0	
60.00%				40.00%		0.00%		0.00%		0.00%	
										NH/OP: 0	
										PWD: 0	
										0.00%	

W=White B/AA=Black or African American H/L=Hispanic or Latino A=Asian AI/AN=American Indian or Alaskan Native NH OPI=Native Hawaiian or Other Pacific Islander PWD=People with Disabilities
DHR-9 (Rev Feb. 2016)

Workforce Analysis by Region

Reporting Period: 6/30/22

Agency: Department of Juvenile Justice

Region: 5

EEO Category	Grand Total	MALES										FEMALES										PERCENTAGES																																																																																																																																																																																																																																																																																																																																																																																																																																																																																																																																																																																																																																																																																																																																																																																																																																																																																																																																																																																																																																																																																																																																																																																																																																																																																																																																																																																											
		Total					W					B/AA					H/L					A					AI/AN					H/L					A					AI/AN					H/OPI					P/W																																																																																																																																																																																																																																																																																																																																																																																																																																																																																																																																																																																																																																																																																																																																																																																																																																																																																																																																																																																																																																																																																																																																																																																																																																																																																																																																																													

Grand Total Employees for Region 5:										Total Minorities:									
Males:					Females:					50.00%					50.00%				
White: 2 50.00%					Black/African American: 2 50.00%					Hispanic/Latino: 0 0.00%					Asian: 0 0.00%				
B/AA=Black or African American					H/L=Hispanic or Latino					A=Asian					AI/AN=American Indian or Alaskan Native				
NHOPI=Native Hawaiian or Other Pacific Islander					PWD=People with Disabilities					0 0.00%					0 0.00%				

W=White B/AA=Black or African American H/L=Hispanic or Latino A=Asian AI/AN=American Indian or Alaskan Native NHOPI=Native Hawaiian or Other Pacific Islander PWD=People with Disabilities
DHR-2 (Rev Feb. 2016)

Reporting Period: 6/30/22

Grand Total		MALES							FEMALES							PERCENTAGES									
		Total	W	B/AA	H/L	A	AI/ AN	NH OPI	PWD	Total	W	B/AA	H/L	A	AI/ AN	NH OPI	PWD	M	F	W	B/AA	H/L	A	AI/AN	NH/OPI
Officials / Administrators	0	0							0								0.00%	0.00%	0.00%	0.00%	0.00%	0.00%	0.00%	0.00%	0.00%
Professionals	5	2	2						3	3							40.00%	60.00%	100.00%	0.00%	0.00%	0.00%	0.00%	0.00%	0.00%
Technicians	0	0							0								0.00%	0.00%	0.00%	0.00%	0.00%	0.00%	0.00%	0.00%	0.00%
Protective Service	0	0							0								0.00%	0.00%	0.00%	0.00%	0.00%	0.00%	0.00%	0.00%	0.00%
Para- Professionals	0	0							0								0.00%	0.00%	0.00%	0.00%	0.00%	0.00%	0.00%	0.00%	0.00%
Administrative Support	0	0							0								0.00%	0.00%	0.00%	0.00%	0.00%	0.00%	0.00%	0.00%	0.00%
Skilled Craft	0	0							0								0.00%	0.00%	0.00%	0.00%	0.00%	0.00%	0.00%	0.00%	0.00%
Service / Maintenance	0	0							0								0.00%	0.00%	0.00%	0.00%	0.00%	0.00%	0.00%	0.00%	0.00%
TOTAL	5	2	2	0	0	0	0	0	3	3	0	0	0	0	0	0	40.00%	60.00%	100.00%	0.00%	0.00%	0.00%	0.00%	0.00%	0.00%

Grand Total Employees for Region 6:					
	Males:	Females:	Total Minorities:		
	2	3	0		
	40.00%	60.00%	0.00%		
White:	5	Asian:	AU/AN:	NHOPI:	PWD:
100.00%	Black/African American:	0	0	0	0
	0.00%	Hispanic/Latino:	0.00%	0.00%	0.00%
		0			
		0.00%			

W=White B/AA=Black or African American H/L=Hispanic or Latino A=Asian A/AN=American Indian or Alaskan Native NHOPI=Native Hawaiian or Other Pacific Islander PWD=People with Disabilities

DI-R-9 (Rev. Feb. 2016)

Workforce Analysis by Region

Reporting Period: 6/30/22

Agency: Department of Juvenile Justice

Region: 10

EEO Category	Grand Total	MALES										FEMALES										PERCENTAGES																																																																																																																																																																																																																																																																																																																																																																																																																																																																																																																																																																																																																																																																																																																																																																																																																																																																																																																																																																																																																																																																																																																																																																																																																																																																																																																																																																																																																																																																																										
		Total					W					B/AA					HL					A					AI/ AN					OPI					PWD					M					F					W					B/AA					H/L					A					AI/AN					NH/OPI					P/W																																																																																																																																																																																																																																																																																																																																																																																																																																																																																																																																																																																																																																																																																																																																																																																																																																																																																																																																																																																																																																																																																																																																																																																																																																																																																																																																																																																																																														

Grand Total Employees for Region 10:										Total Minorities: 18																								
Males:					Females:					70					9.33%																			
123					63.73%					36.27%																								
White: 175					Black/African American: 17					Hispanic/Latino: 1					Asian: 0					A/AN: 0					NH/PI: 0					PWD: 7				
90.67%					8.81%					0.52%					0.00%					0.00%					0.00%					3.63%				

W=White B/AA=Black or African American H/L=Hispanic or Latino A=Asian A/AN=American Indian or Alaskan Native NH/PI=Native Hawaiian or Other Pacific Islander PWD=People with Disabilities

DR-9 (Rev. Feb. 2016)