



**Monthly Report:  
December 2024**

**FY2025**

## Section 1: Population and Staffing Data

Table 1a: Population by Facility

	1/24	2/24	3/24	4/24	5/24	6/24	7/24	8/24	9/24	10/24	11/24	12/24
<b>Chicago</b>	41	40	37	41	39	41	43	50	51	52	55	44
<b>Harrisburg</b>	55	56	50	56	49	51	61	49	48	53	51	54
<b>Pere Marquette</b>	13	12	15	13	13	16	16	18	20	17	12	12
<b>St. Charles</b>	32	21	29	24	23	32	30	30	31	27	32	27
<b>Warrenville*</b>	26	28	29	31	33	33	29	31	37	37	38	37
<b>IDJJ Total</b>	<b>167</b>	<b>157</b>	<b>160</b>	<b>165</b>	<b>157</b>	<b>173</b>	<b>179</b>	<b>178</b>	<b>187</b>	<b>186</b>	<b>188</b>	<b>174</b>

\*Due to fire, the Warrenville Population is being housed at St. Charles.

Table 1b: Average Daily Population by Facility

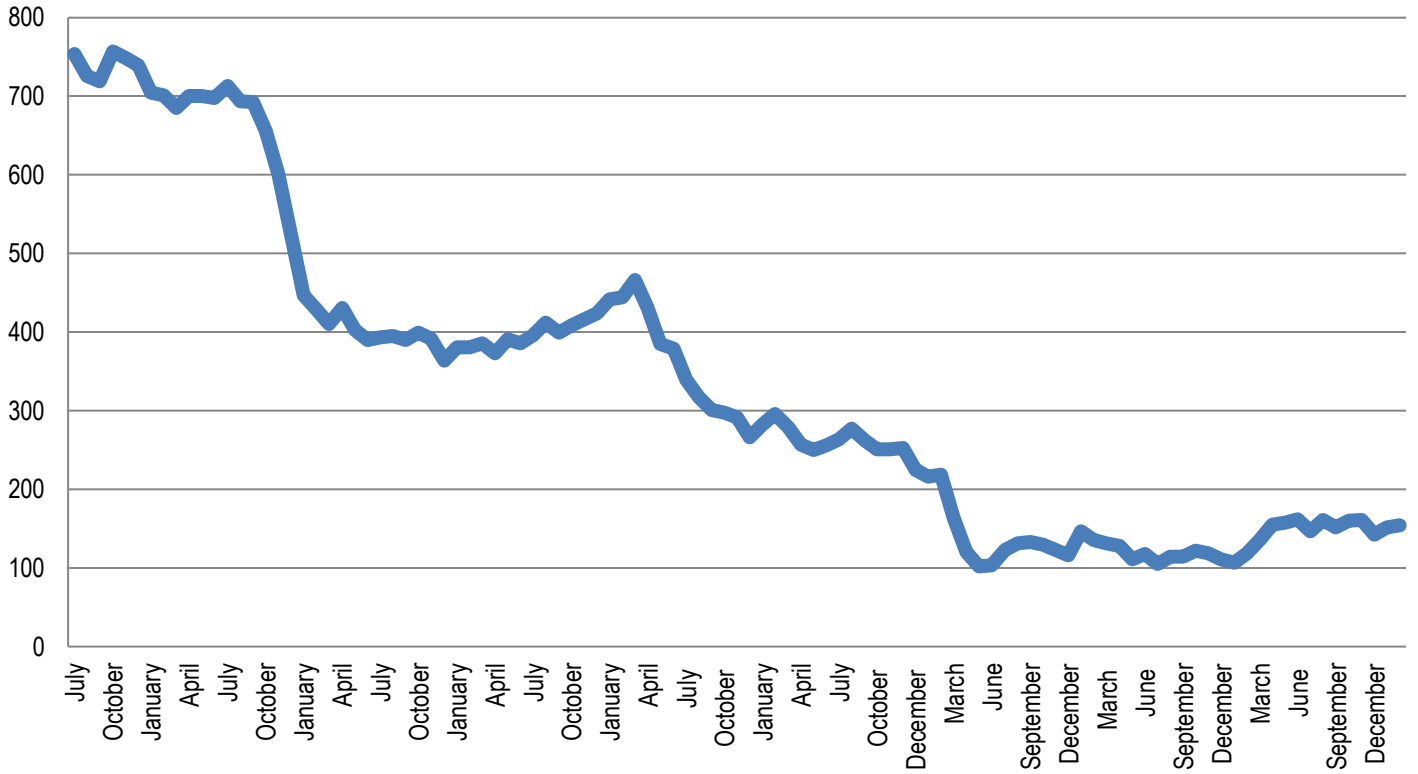
	1/24	2/24	3/24	4/24	5/24	6/24	7/24	8/24	9/24	10/24	11/24	12/24
<b>Chicago</b>	39.4	40.7	37.8	42.2	39.8	39.2	42.7	45.2	51.3	51.3	52.3	51.1
<b>Harrisburg</b>	56.4	54.1	54.4	54.4	53.6	52.0	55.5	51.1	47.3	50.0	52.2	53.3
<b>Pere Marquette</b>	12.3	13.5	13.2	12.8	12.5	14.5	16.2	17.7	18.1	16.8	13.6	12.3
<b>St. Charles</b>	35.4	24.6	25.4	24.8	22.2	28.1	43.9	30.2	30.6	30.1	30.4	30.1
<b>Warrenville*</b>	23.2	26.8	28.5	28.0	33.9	32.2	41.3	31.6	36.8	37.0	35.1	37.6
<b>IDJJ Total</b>	<b>166.6</b>	<b>159.7</b>	<b>159.3</b>	<b>162.2</b>	<b>162.1</b>	<b>166.0</b>	<b>179.7</b>	<b>175.8</b>	<b>184.0</b>	<b>185.3</b>	<b>183.7</b>	<b>184.1</b>

\*Due to fire, the Warrenville Population is being housed at St. Charles.

Table 2: Security Staff Headcount by Facility

	1/24	2/24	3/24	4/24	5/24	6/24	7/24	8/24	9/24	10/24	11/24	12/24
<b>Chicago</b>	70	70	65	65	71	69	69	70	69	67	72	69
<b>Harrisburg</b>	109	110	110	109	120	120	118	112	111	107	114	112
<b>Pere Marquette</b>	43	40	41	40	43	42	39	40	39	39	39	39
<b>St. Charles</b>	67	66	66	64	66	66	60	57	57	56	57	56
<b>Warrenville</b>	62	60	58	53	57	57	56	59	55	54	56	57
<b>IDJJ Total</b>	<b>351</b>	<b>346</b>	<b>341</b>	<b>331</b>	<b>357</b>	<b>354</b>	<b>342</b>	<b>338</b>	<b>331</b>	<b>323</b>	<b>338</b>	<b>333</b>

**Chart 1: Facility Populations on Last Day of Month Last Nine Fiscal Years**



## Section 2: Mental Health Data

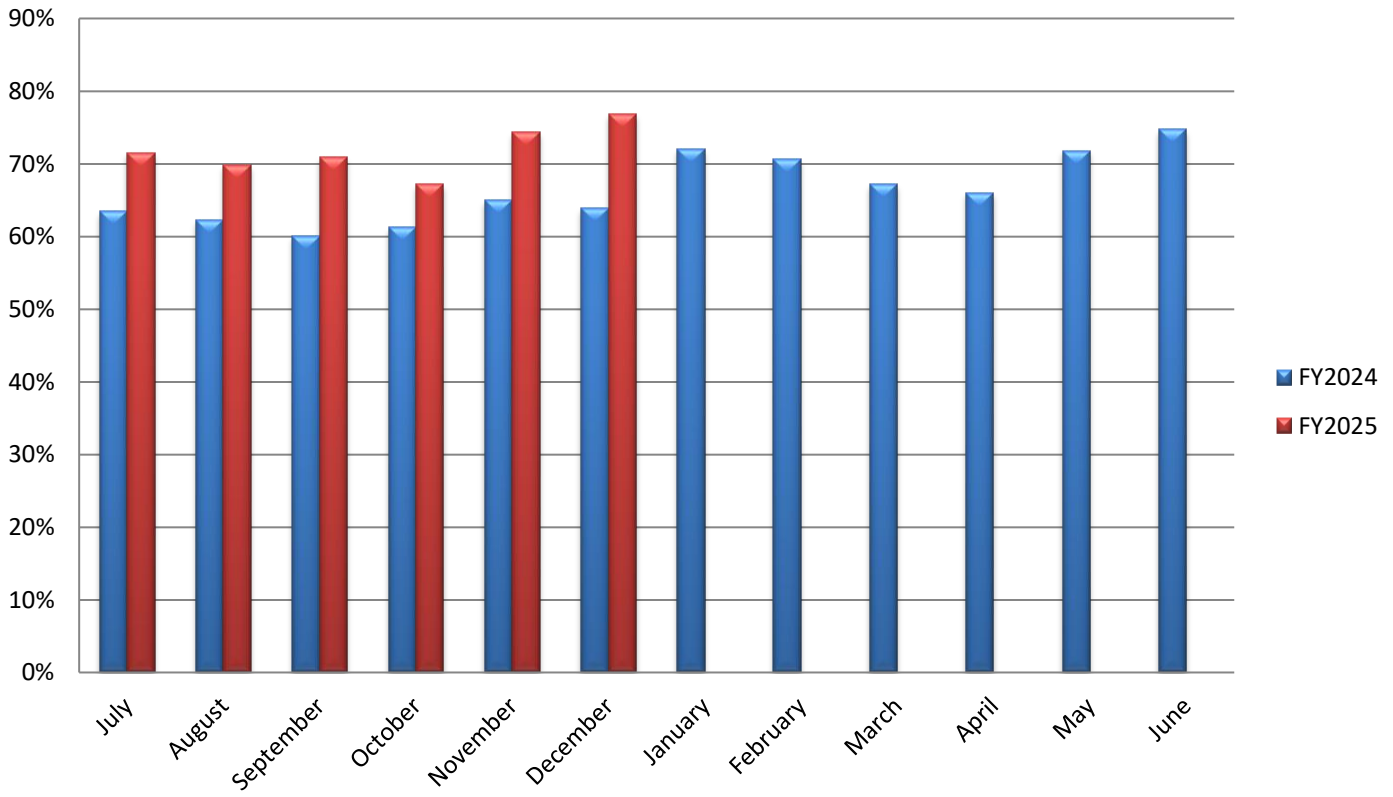
Table 5: Percent of Youth Psychotropic Medication

	1/24	2/24	3/24	4/24	5/24	6/24	7/24	8/24	9/24	10/24	11/24	12/24
<b>Chicago</b>	90.2%	86.0%	70.0%	71.9%	66.1%	67.2%	63.6%	63.4%	65.7%	72.7%	89.4%	89.1%
<b>Harrisburg</b>	61.4%	70.7%	62.7%	63.3%	69.4%	72.6%	68.8%	69.7%	67.1%	60.2%	62.9%	67.6%
<b>Pere Marquette</b>	68.8%	68.8%	67.7%	70.6%	63.2%	68.8%	84.2%	82.6%	76%	72.7%	77.8%	83.3%
<b>St. Charles</b>	65.9%	51.2%	57.5%	44.4%	65.7%	69.8%	63.0%	58.8%	66.7%	53.1%	57.8%	57.1%
<b>Warrenville</b>	81.8%	73.5%	85.7%	86.8%	95%	97.5%	95.2%	87.8%	91.2%	83.3%	84.8%	90.9%
<b>IDJJ Average</b>	<b>72.0%</b>	<b>70.6%</b>	<b>67.2%</b>	<b>66.0%</b>	<b>71.8%</b>	<b>74.7%</b>	<b>71.5%</b>	<b>69.8%</b>	<b>70.9%</b>	<b>67.2%</b>	<b>74.3%</b>	<b>76.8%</b>

Table 7: Distribution of Mental Health Levels

	Mental Health Level 0	Mental Health Level 1	Mental Health Level 2	Mental Health Level 3	Mental Health Level 3.5	Mental Health Level 4
<b>January</b>	0.0%	35.5%	61.4%	3.0%	0.0%	0.0%
<b>February</b>	0.0%	37.0%	59.2%	3.8%	0.0%	0.0%
<b>March</b>	0.0%	38.3%	56.1%	5.6%	0.0%	0.0%
<b>April</b>	0.0%	35.6%	58.4%	5.9%	0.0%	0.0%
<b>May</b>	0.0%	34.0%	61.9%	4.1%	0.0%	0.0%
<b>June</b>	0.0%	29.2%	65.6%	5.2%	0.0%	0.0%
<b>July</b>	0.0%	33.9%	62.5%	3.6%	0.0%	0.0%
<b>August</b>	0.0%	30.9%	65.7%	3.3%	0.0%	0.0%
<b>September</b>	0.0%	34.3%	63.8%	1.9%	0.0%	0.0%
<b>October</b>	0.0%	33.5%	61.8%	4.7%	0.0%	0.0%
<b>November</b>	0.0%	29.4%	68.8%	1.8%	0.0%	0.0%
<b>December</b>	0.0%	28.1%	68.8%	3.0%	0.0%	0.0%
<b>IDJJ Average</b>	<b>0.0%</b>	<b>33.3%</b>	<b>62.8%</b>	<b>3.8%</b>	<b>0.0%</b>	<b>0.0%</b>

### Percent of Youth on Psychotropic Medication by Fiscal Year



### Section 3: Substance Abuse Treatment Data

Table 9: Number of Treatment Participants

	1/24	2/24	3/24	4/24	5/24	6/24	7/24	8/24	9/24	10/24	11/24	12/24
<b>Chicago</b>	9	13	11	8	13	9	9	10	14	14	15	15
<b>Harrisburg</b>	18	19	22	17	18	15	12	16	14	15	18	12
<b>Pere Marquette</b>	6	6	4	5	3	3	6	6	8	7	7	6
<b>St. Charles</b>	2	3	3	2	1	0	1	1	1	2	5	8
<b>Warrenville</b>	10	10	7	8	9	13	10	12	13	11	15	8
<b>IDJJ Total</b>	<b>45</b>	<b>51</b>	<b>47</b>	<b>40</b>	<b>44</b>	<b>37</b>	<b>38</b>	<b>45</b>	<b>50</b>	<b>49</b>	<b>60</b>	<b>49</b>

Table 10: Average Length of Stay for Completers

	1/24	2/24	3/24	4/24	5/24	6/24	7/24	8/24	9/24	10/24	11/24	12/24
<b>Chicago</b>	-	-	103	152	94	-	115	115	85	-	92	-
<b>Harrisburg</b>	-	86	89		90	91	-	76	86	72	74	71
<b>Pere Marquette</b>	90	90	-	105	90	-	-	137	94	-	-	-
<b>St. Charles</b>	-	-	-	47	90	-	-	-	-	90	-	-
<b>Warrenville</b>	-	90	-	92	-	90	-	98	94	-	88	-
<b>IDJJ Average</b>	<b>90</b>	<b>89</b>	<b>96</b>	<b>106</b>	<b>91</b>	<b>90</b>	<b>115</b>	<b>106</b>	<b>88</b>	<b>78</b>	<b>86</b>	<b>71</b>

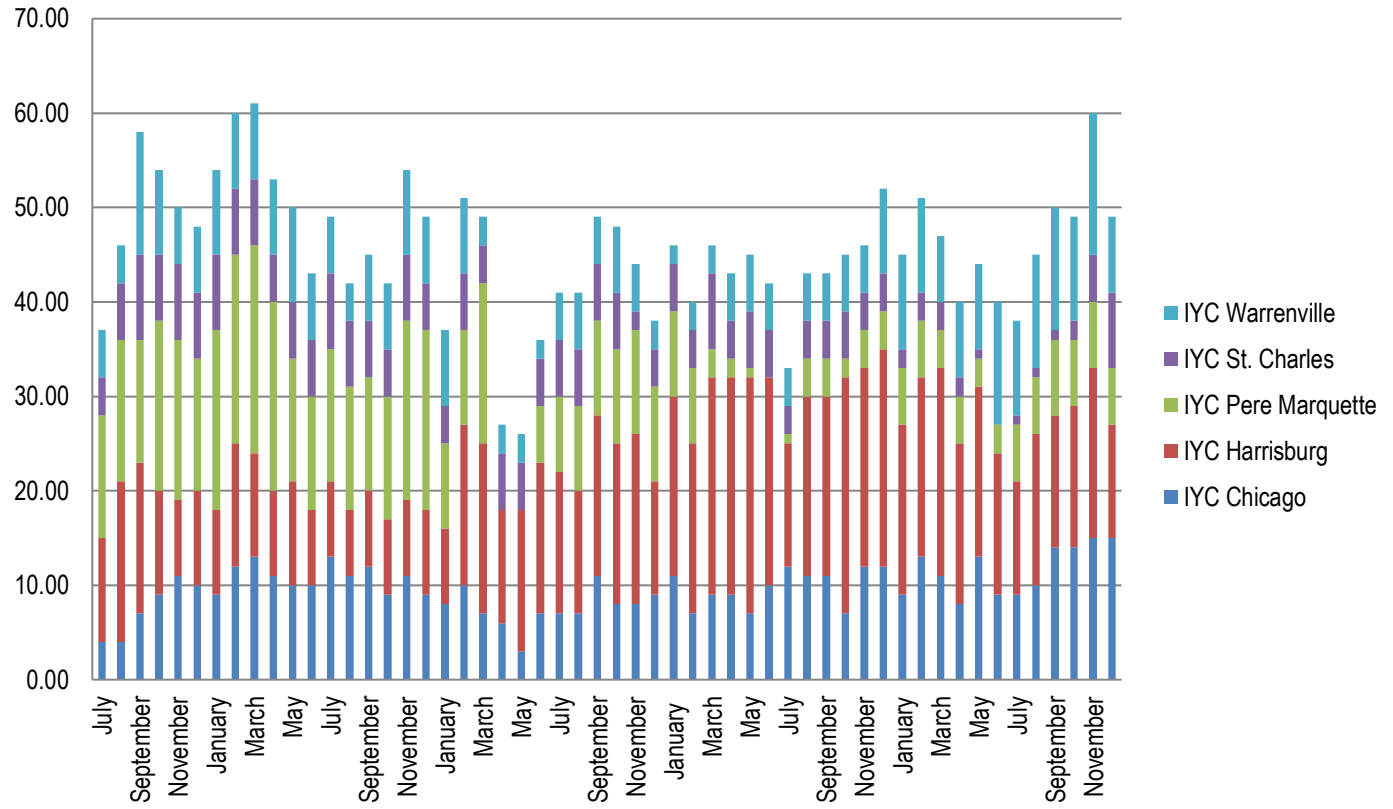
Table 11: Percent of Discharges by Reason

	1/24	2/24	3/24	4/24	5/24	6/24	7/24	8/24	9/24	10/24	11/24	12/24
<b>Successful Completion</b>	12.5%	40%	60%	50%	46.2%	71.4%	20%	70%	46.2%	33.3%	76.9%	14.3%
<b>Behavioral Discharge</b>	0%	0%	0%	0%	0%	14.3%	0%	0%	0%	0%	0%	28.6%
<b>Youth Released</b>	75%	40%	40%	50%	30.8%	0%	80%	10%	23.1%	50%	15.4%	57.1%
<b>Other Discharge</b>	12.5%	20%	0%	0%	23.1%	14.3%	0%	20%	30.8%	16.7%	7.7%	0%

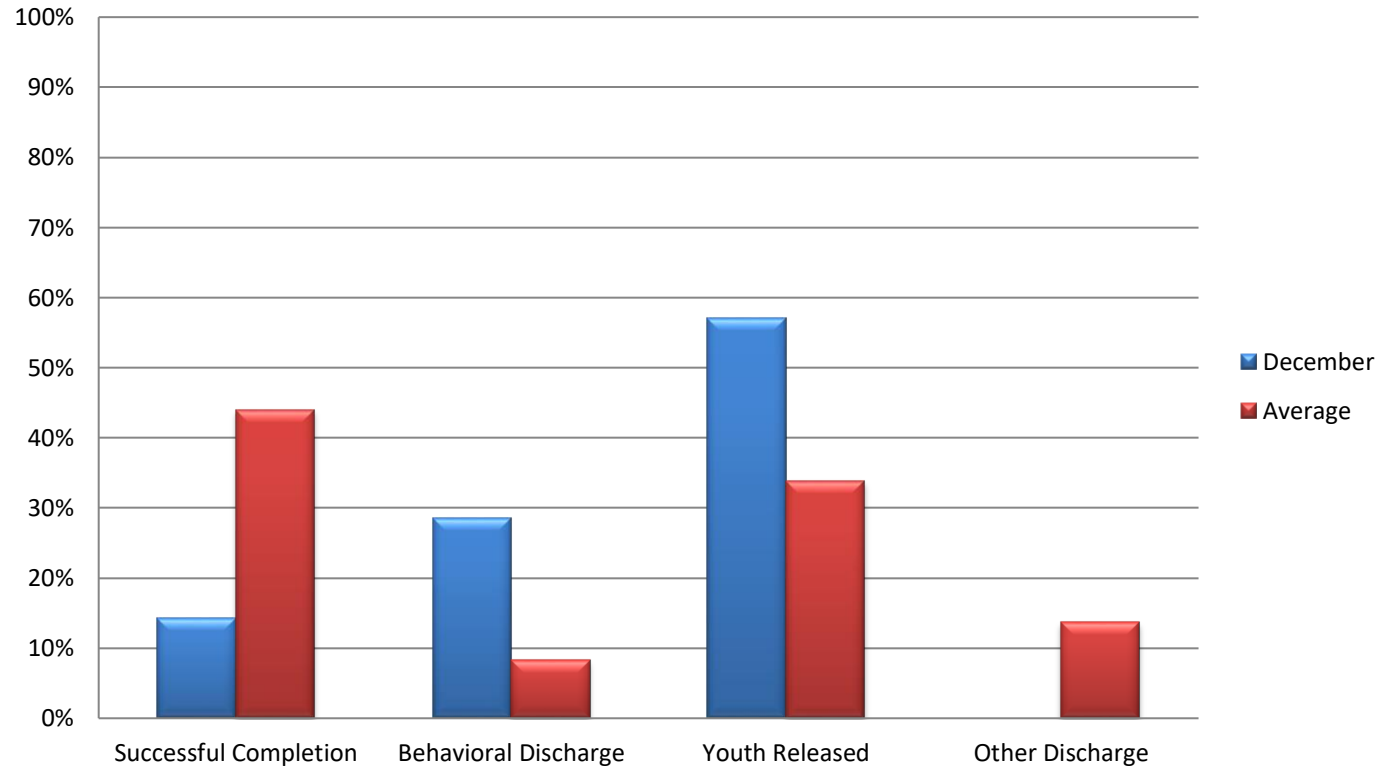
Table 12: Primary Substance Abused

	1/24	2/24	3/24	4/24	5/24	6/24	7/24	8/24	9/24	10/24	11/24	12/24
<b>Marijuana</b>	61.4%	63.3%	43.2%	50%	54.5%	65%	70.7%	62.2%	67.3%	58.1%	56.7%	61.1%
<b>Alcohol</b>	6.8%	4.1%	6.8%	0%	0%	2.5%	2.4%	2.2%	5.8%	9.3%	6.7%	7.4%
<b>Opioids</b>	9.1%	12.2%	18.2%	15.6%	13.6%	5%	4.9%	6.7%	9.6%	14.0%	18.3%	13.0%
<b>Other Drugs</b>	22.7%	20.4%	31.8%	34.3%	29.5%	27.5%	22.0%	28.9%	17.3%	18.6%	18.3%	18.5%
<b>No Diagnosis</b>	0%	0%	0%	0%	2.3%	0%	0%	0%	0%	0%	0%	0%

**Chart 5: Number of Treatment Participants by Facility**



**Chart 6: Discharges by Reason**



## Section 4: Education Data

Table 13: Students Enrolled in School

	1/24	2/24	3/24	4/24	5/24	6/24	7/24	8/24	9/24	10/24	11/24	12/24
<b>Chicago</b>	31	24	24	24	23	22	20	30	34	30	38	33
<b>Harrisburg</b>	61	58	62	56	55	49	58	57	48	48	51	44
<b>Pere Marquette</b>	8	7	8	8	6	8	10	13	11	9	5	5
<b>St. Charles</b>	-	-	-	-	-	-	-	-	-	-	-	-
<b>Warrenville</b>	25	26	30	29	31	31	29	33	36	38	35	37
<b>IDJJ Total</b>	<b>125</b>	<b>115</b>	<b>124</b>	<b>117</b>	<b>115</b>	<b>110</b>	<b>117</b>	<b>133</b>	<b>129</b>	<b>125</b>	<b>129</b>	<b>119</b>

Table 14: Teachers Employed

	1/24	2/24	3/24	4/24	5/24	6/24	7/24	8/24	9/24	10/24	11/24	12/24
<b>Chicago</b>	7	7	7	7	6	10	11	12	12	12	11	11
<b>Harrisburg</b>	11	10	10	10	11	11	11	11	11	11	11	11
<b>Pere Marquette</b>	6	6	6	6	6	6	6	6	6	6	6	6
<b>St. Charles</b>	1	1	1	1	1	1	1	1	1	1	1	1
<b>Warrenville</b>	6	6	6	6	6	8	7	12	12	13	13	13
<b>IDJJ Total</b>	<b>31</b>	<b>30</b>	<b>30</b>	<b>30</b>	<b>30</b>	<b>36</b>	<b>36</b>	<b>42</b>	<b>42</b>	<b>43</b>	<b>42</b>	<b>42</b>

Table 15: Student to Teacher Ratio

	1/24	2/24	3/24	4/24	5/24	6/24	7/24	8/24	9/24	10/24	11/24	12/24
<b>Chicago</b>	4.4	3.4	3.4	3.4	3.8	3.7	1.8	2.5	2.8	2.5	3.5	3
<b>Harrisburg</b>	5.5	5.8	6.2	5.6	5	4.5	5.3	5.2	4.4	4.4	4.6	4
<b>Pere Marquette</b>	1.3	1.2	1.3	1.3	1	1.3	1.7	2.2	1.8	1.5	0.8	0.8
<b>St. Charles</b>	-	-	-	-	-	-	-	-	-	-	-	-
<b>Warrenville</b>	4.2	4.3	5	4.8	5.2	5.2	4.1	2.8	3	2.9	2.7	2.8
<b>IDJJ Average</b>	<b>4.0</b>	<b>3.8</b>	<b>4.1</b>	<b>3.9</b>	<b>3.8</b>	<b>3.7</b>	<b>3.3</b>	<b>3.2</b>	<b>3.1</b>	<b>2.9</b>	<b>3.1</b>	<b>2.8</b>

Table 17: Overall Diplomas Awarded

	1/24	2/24	3/24	4/24	5/24	6/24	7/24	8/24	9/24	10/24	11/24	12/24	Total
<b>Chicago</b>	0	3	1	4	1	1	2	0	0	0	0	0	<b>12</b>
<b>Harrisburg</b>	1	4	1	2	4	1	2	2	1	2	1	0	<b>21</b>
<b>Pere Marquette</b>	1	3	1	1	1	0	0	0	2	0	1	0	<b>10</b>
<b>St. Charles</b>	-	-	-	-	-	-	-	-	-	-	-	-	<b>0</b>
<b>Warrenville</b>	0	1	1	2	8	0	0	0	0	3	0	0	<b>15</b>
<b>IDJJ Total</b>	<b>2</b>	<b>11</b>	<b>4</b>	<b>9</b>	<b>14</b>	<b>2</b>	<b>4</b>	<b>2</b>	<b>3</b>	<b>5</b>	<b>2</b>	<b>0</b>	<b>58</b>

Table 18: Percent of Special Education Students

	1/24	2/24	3/24	4/24	5/24	6/24	7/24	8/24	9/24	10/24	11/24	12/24
<b>Chicago</b>	35.5%	37.5%	41.7%	33.3%	47.8%	54.5%	50%	33.3%	35.3%	50%	28.9%	27.3%
<b>Harrisburg</b>	49.2%	44.9%	41.9%	53.6%	45.5%	36.7%	44.8%	36.8%	35.4%	52.1%	49.0%	59.1%
<b>Pere Marquette</b>	50%	71.4%	25%	25%	33.3%	62.5%	60%	53.8%	45.5%	55.5%	0%	0%
<b>St. Charles</b>	-	-	-	-	-	-	-	-	-	-	-	-
<b>Warrenville</b>	64%	57.7%	53.3%	62.1%	58.1%	61.3%	58.6%	54.5%	55.6%	55.3%	65.7%	62.2%
<b>IDJJ Total</b>	<b>48.8%</b>	<b>47.8%</b>	<b>43.5%</b>	<b>49.6%</b>	<b>48.7%</b>	<b>49.1%</b>	<b>50.4%</b>	<b>42.1%</b>	<b>41.9%</b>	<b>52.8%</b>	<b>45.7%</b>	<b>48.7%</b>

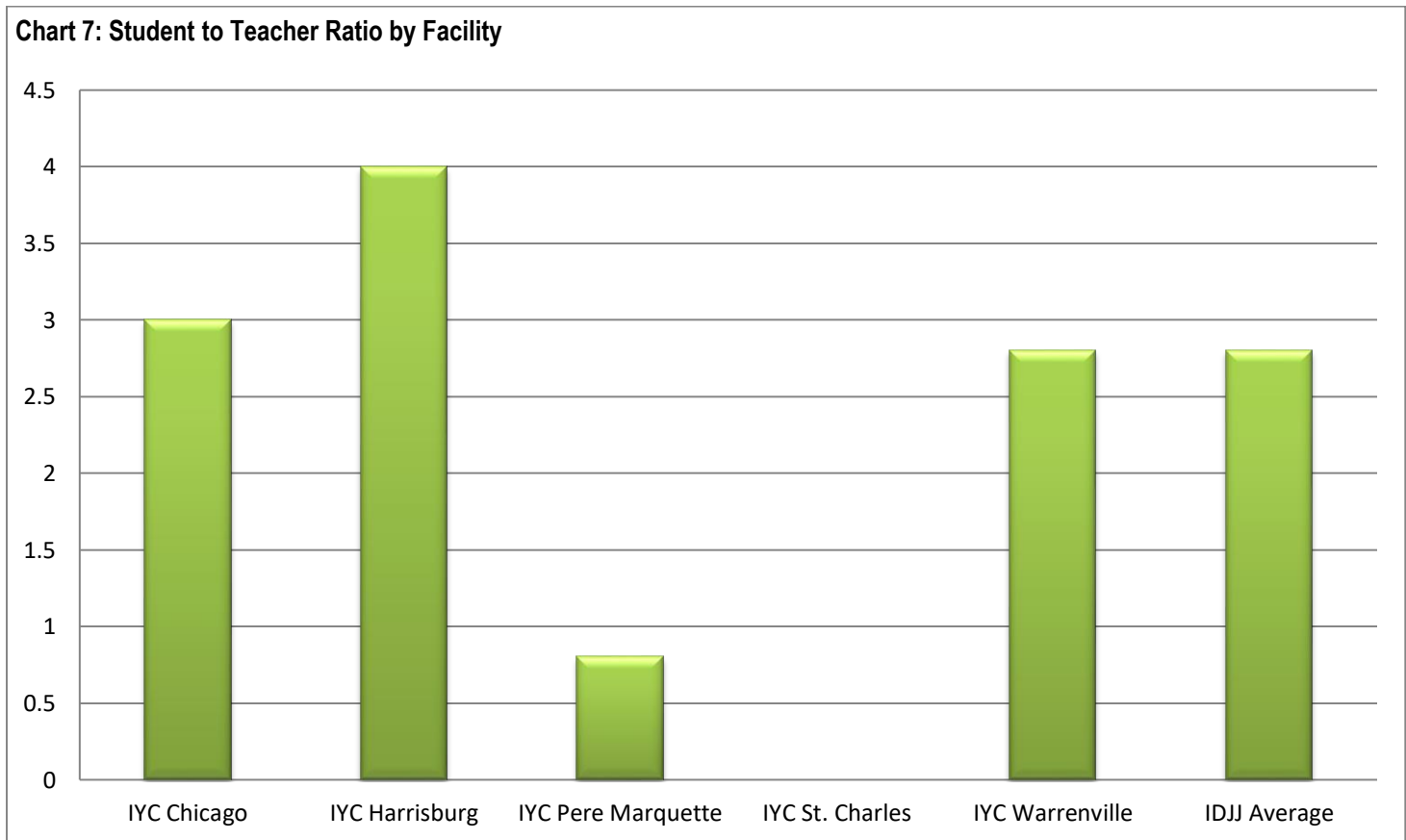


Table 20: Youth in Continuing Education

	Post-Secondary	Collegiate
<i>IYC Chicago</i>	0	0
<i>IYC Harrisburg</i>	0	7
<i>IYC Pere Marquette</i>	0	0
<i>IYC St. Charles</i>	0	0
<i>IYC Warrenville</i>	0	0
<b>IDJJ Total</b>	<b>0</b>	<b>7</b>

Table 21: Number and Percent of Cancelled Whole School Days

	Number	Percent
<i>IYC Chicago</i>	0	0%
<i>IYC Harrisburg</i>	0	0%
<i>IYC Pere Marquette</i>	0	0%
<i>IYC St. Charles</i>	0	0%
<i>IYC Warrenville</i>	0	0%
<b>IDJJ Total</b>	<b>0</b>	<b>0%</b>



## Section 5: Reportable Incident Data

Table 21a: Number of Reportable Incidents

	1/24	2/24	3/24	4/24	5/24	6/24	7/24	8/24	9/24	10/24	11/24	12/24
<b>Chicago</b>	6	8	8	8	5	14	11	20	10	24	22	7
<b>Harrisburg</b>	39	31	23	34	23	26	31	35	15	31	25	41
<b>Pere Marquette</b>	5	3	2	2	1	5	12	8	20	7	2	2
<b>St. Charles</b>	8	4	6	6	0	1	12	7	7	2	5	6
<b>Warrenville</b>	6	9	15	17	17	12	15	13	17	31	8	8
<b>IDJJ Total</b>	<b>64</b>	<b>55</b>	<b>54</b>	<b>67</b>	<b>46</b>	<b>58</b>	<b>81</b>	<b>83</b>	<b>69</b>	<b>95</b>	<b>62</b>	<b>66</b>

Table 21b: Rate of Reportable Incidents per 100 Youth

	1/24	2/24	3/24	4/24	5/24	6/24	7/24	8/24	9/24	10/24	11/24	12/24	Avg.
<b>Chicago</b>	15.2	19.7	21.2	18.9	12.6	35.7	25.8	44.2	19.5	46.8	42.1	13.7	<b>26.3</b>
<b>Harrisburg</b>	69.1	57.3	42.3	62.5	42.9	50	55.9	68.5	31.7	62.0	47.9	76.9	<b>55.6</b>
<b>Pere Marquette</b>	40.7	22.2	15.2	15.6	8	34.5	74.1	45.2	110.5	41.7	14.7	16.3	<b>36.6</b>
<b>St. Charles</b>	22.6	16.3	23.6	24.2	0	3.6	24.5	22.0	22.9	6.6	16.4	19.9	<b>16.9</b>
<b>Warrenville</b>	25.9	33.6	52.6	60.7	50.1	37.3	41.3	43.3	46.2	83.8	22.8	21.3	<b>43.2</b>
<b>IDJJ Average</b>	<b>38.4</b>	<b>34.4</b>	<b>33.9</b>	<b>41.3</b>	<b>28.4</b>	<b>34.9</b>	<b>45.1</b>	<b>47.2</b>	<b>37.5</b>	<b>51.3</b>	<b>33.8</b>	<b>35.9</b>	<b>38.5</b>

Table 22a: Number of Youth on Youth Assaults

	1/24	2/24	3/24	4/24	5/24	6/24	7/24	8/24	9/24	10/24	11/24	12/24
<b>Chicago</b>	3	1	5	1	1	3	1	5	2	5	7	1
<b>Harrisburg</b>	14	7	5	9	9	11	9	15	3	15	5	13
<b>Pere Marquette</b>	4	1	1	1	0	0	4	3	6	4	0	1
<b>St. Charles</b>	3	0	1	2	0	0	3	1	0	0	1	1
<b>Warrenville</b>	0	3	4	2	2	2	1	2	1	2	2	1
<b>IDJJ Total</b>	<b>24</b>	<b>12</b>	<b>16</b>	<b>15</b>	<b>12</b>	<b>16</b>	<b>18</b>	<b>26</b>	<b>12</b>	<b>26</b>	<b>15</b>	<b>17</b>

Table 22b: Rate of Youth on Youth Assaults per 100 Youth

	1/24	2/24	3/24	4/24	5/24	6/24	7/24	8/24	9/24	10/24	11/24	12/24	Avg.
<b>Chicago</b>	7.6	2.5	13.2	2.4	2.5	7.7	2.3	11.1	3.9	9.7	13.4	2.0	<b>6.5</b>
<b>Harrisburg</b>	24.8	12.9	9.2	16.5	16.8	21.2	16.2	29.4	6.3	30.0	9.6	24.4	<b>18.1</b>
<b>Pere Marquette</b>	32.5	7.4	7.6	7.8	0	0	24.7	16.9	33.1	23.8	0	8.1	<b>13.5</b>
<b>St. Charles</b>	8.5	0	3.9	8.1	0	0	6.1	3.1	0	0	3.3	3.3	<b>3.0</b>
<b>Warrenville</b>	0.0	11.2	14.0	7.1	5.9	6.2	2.8	6.7	2.7	5.4	5.7	2.7	<b>5.9</b>
<b>IDJJ Average</b>	<b>14.4</b>	<b>7.5</b>	<b>10.0</b>	<b>9.2</b>	<b>7.4</b>	<b>9.6</b>	<b>10.0</b>	<b>14.8</b>	<b>6.5</b>	<b>14.0</b>	<b>8.2</b>	<b>9.2</b>	<b>10.1</b>

Table 23a: Number of Youth Fights

	1/24	2/24	3/24	4/24	5/24	6/24	7/24	8/24	9/24	10/24	11/24	12/24
<b>Chicago</b>	1	3	2	5	2	6	8	10	5	10	9	6
<b>Harrisburg</b>	25	21	14	21	13	11	18	15	10	11	16	23
<b>Pere Marquette</b>	0	1	0	1	1	5	3	2	7	1	1	1
<b>St. Charles</b>	3	2	2	3	0	1	7	4	6	1	3	4
<b>Warrenville</b>	3	3	10	10	10	10	10	7	13	22	4	5
<b>IDJJ Total</b>	<b>32</b>	<b>30</b>	<b>28</b>	<b>40</b>	<b>26</b>	<b>33</b>	<b>44</b>	<b>38</b>	<b>41</b>	<b>45</b>	<b>33</b>	<b>39</b>

Table 23b: Rate of Youth Fights per 100 Youth

	1/24	2/24	3/24	4/24	5/24	6/24	7/24	8/24	9/24	10/24	11/24	12/24	Avg.
<b>Chicago</b>	2.6	7.4	5.3	11.8	5.0	15.3	18.7	22.1	9.7	19.5	17.2	11.7	<b>12.2</b>
<b>Harrisburg</b>	44.3	38.8	25.7	38.6	24.3	21.2	32.4	29.4	21.1	22	30.7	43.2	<b>31.0</b>
<b>Pere Marquette</b>	0	7.4	0	7.8	8	34.5	18.5	11.3	38.7	6.0	7.4	8.1	<b>12.3</b>
<b>St. Charles</b>	8.5	8.1	7.9	12.1	0	3.6	14.3	12.6	19.6	3.3	9.9	13.3	<b>9.4</b>
<b>Warrenville</b>	12.9	11.2	35.1	35.7	29.5	31.1	27.5	23.3	35.3	59.5	11.4	13.3	<b>27.1</b>
<b>IDJJ Average</b>	<b>19.2</b>	<b>18.8</b>	<b>17.6</b>	<b>24.7</b>	<b>16.0</b>	<b>19.9</b>	<b>24.4</b>	<b>21.6</b>	<b>22.3</b>	<b>24.3</b>	<b>18.0</b>	<b>21.2</b>	<b>20.7</b>

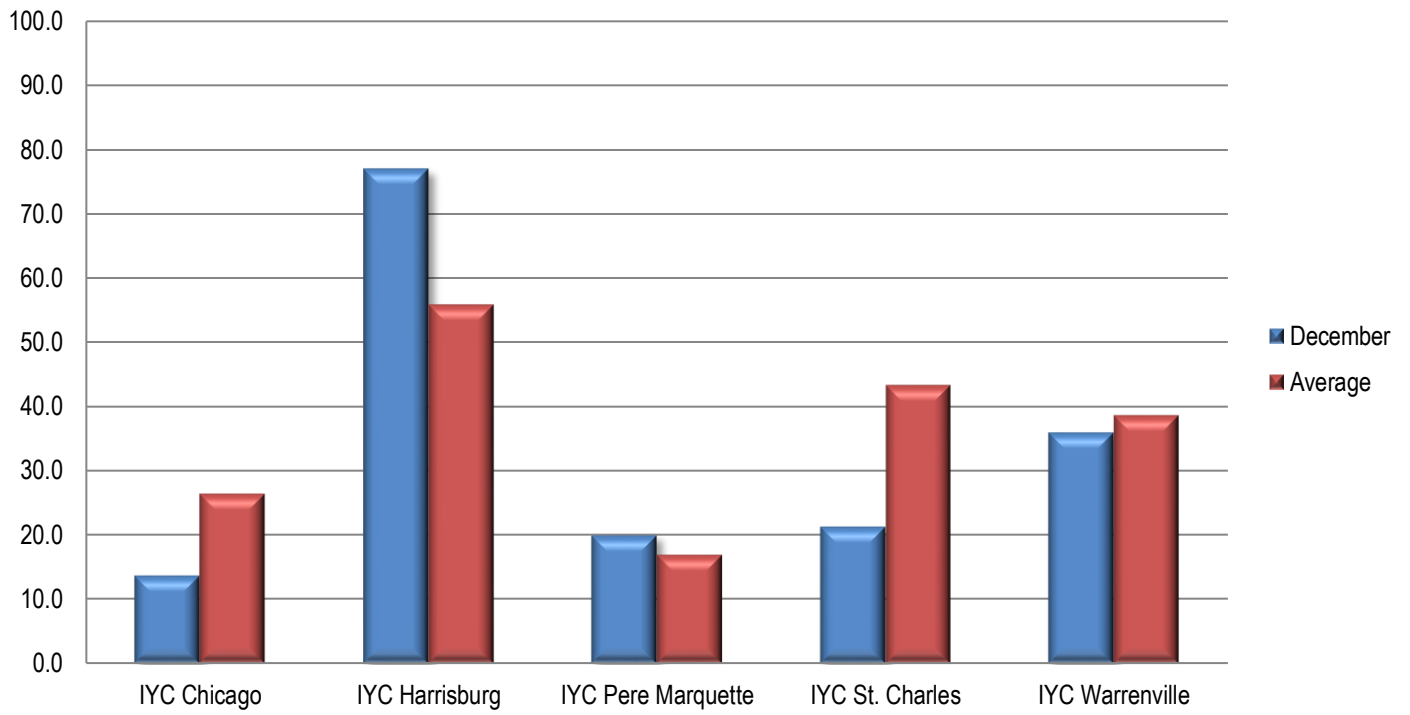
Table 24a: Number of Youth on Staff Assaults

	1/24	2/24	3/24	4/24	5/24	6/24	7/24	8/24	9/24	10/24	11/24	12/24
<b>Chicago</b>	2	4	1	2	2	5	2	5	3	9	6	0
<b>Harrisburg</b>	0	3	4	4	1	4	4	5	2	5	4	5
<b>Pere Marquette</b>	1	1	1	0	0	0	5	3	7	2	1	0
<b>St. Charles</b>	2	2	3	1	0	0	2	2	1	1	1	1
<b>Warrenville</b>	3	3	1	5	5	0	4	4	3	7	2	2
<b>IDJJ Total</b>	<b>8</b>	<b>13</b>	<b>10</b>	<b>12</b>	<b>8</b>	<b>9</b>	<b>17</b>	<b>19</b>	<b>16</b>	<b>24</b>	<b>14</b>	<b>8</b>

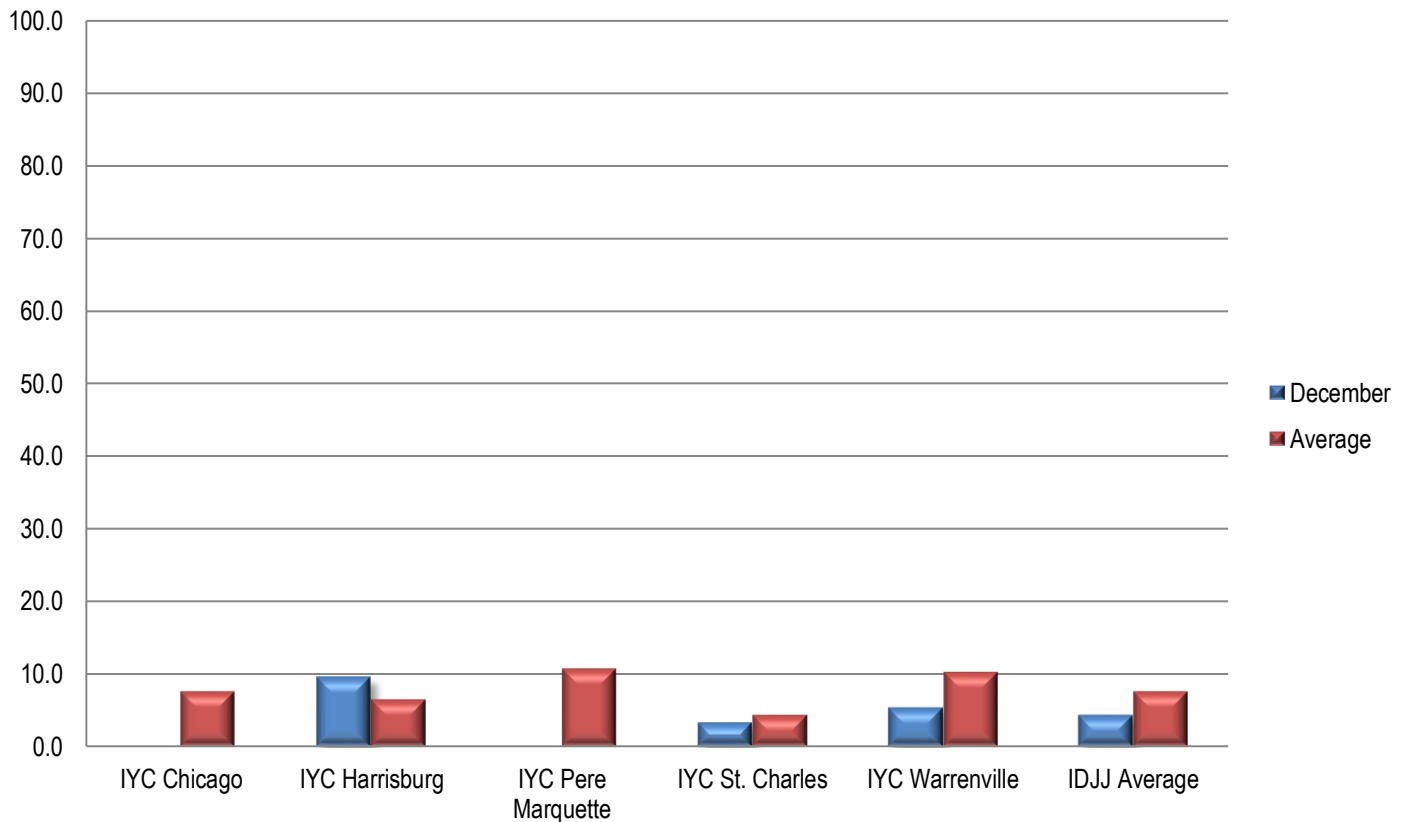
Table 24b: Rate of Youth on Staff Assaults per 100 Youth

	1/24	2/24	3/24	4/24	5/24	6/24	7/24	8/24	9/24	10/24	11/24	12/24	Avg.
<b>Chicago</b>	5.1	9.8	2.6	4.7	5.0	12.8	4.7	11.1	5.8	17.5	11.5	0	<b>7.6</b>
<b>Harrisburg</b>	0	5.5	7.4	7.4	1.9	7.7	7.2	9.8	4.2	10	7.7	9.4	<b>6.5</b>
<b>Pere Marquette</b>	8.1	7.4	7.6	0	0	0	30.9	16.9	38.7	11.9	7.4	0	<b>10.7</b>
<b>St. Charles</b>	5.6	8.1	11.8	4.0	0	0	4.1	6.3	3.3	3.3	3.3	3.3	<b>4.4</b>
<b>Warrenville</b>	12.9	11.2	3.5	17.9	14.7	0	11.0	13.3	8.2	18.9	5.7	5.3	<b>10.2</b>
<b>IDJJ Average</b>	<b>4.8</b>	<b>8.1</b>	<b>6.3</b>	<b>7.4</b>	<b>4.9</b>	<b>5.4</b>	<b>9.5</b>	<b>10.8</b>	<b>8.7</b>	<b>13.0</b>	<b>7.6</b>	<b>4.3</b>	<b>7.6</b>

**Chart 9: Rate of Reportable Incidents Per 100 Youth**



**Chart 10: Rate of Youth on Staff Assault Per 100 Youth**



## Section 6: Indicator Data

Table 25: Uses of Chemical Restraints

	1/24	2/24	3/24	4/24	5/24	6/24	7/24	8/24	9/24	10/24	11/24	12/24
<b>Chicago</b>	0	0	1	0	0	2	2	5	2	4	0	0
<b>Harrisburg</b>	1	2	0	2	1	0	0	1	0	1	2	1
<b>Pere Marquette</b>	0	0	0	0	0	0	0	0	0	0	0	0
<b>St. Charles</b>	1	1	0	1	0	0	0	1	0	1	0	0
<b>Warrenville</b>	0	0	0	1	1	0	0	0	0	3	2	2
<b>IDJJ Total</b>	<b>2</b>	<b>3</b>	<b>1</b>	<b>4</b>	<b>2</b>	<b>2</b>	<b>2</b>	<b>7</b>	<b>2</b>	<b>8</b>	<b>4</b>	<b>3</b>

Table 26: Uses of Mechanical Restraints

	1/24	2/24	3/24	4/24	5/24	6/24	7/24	8/24	9/24	10/24	11/24	12/24
<b>Chicago</b>	1	2	2	2	1	5	2	2	3	8	6	1
<b>Harrisburg</b>	11	16	6	3	7	14	8	24	10	7	8	17
<b>Pere Marquette</b>	1	1	1	0	0	1	5	2	9	4	1	0
<b>St. Charles</b>	0	1	1	1	0	0	2	2	1	0	1	0
<b>Warrenville</b>	3	2	8	10	4	3	4	9	4	9	2	3
<b>IDJJ Total</b>	<b>16</b>	<b>22</b>	<b>18</b>	<b>16</b>	<b>12</b>	<b>23</b>	<b>21</b>	<b>39</b>	<b>27</b>	<b>28</b>	<b>18</b>	<b>21</b>

Uses of chemical and mechanical restraints have varied throughout the year, although the use in the current year is much lower than years past. More important than how frequent they are is whether they are used according to policy and for appropriate reasons.

## Section 7: Confinement Information

Table 28a: Use of Behavioral Holds

	1/24	2/24	3/24	4/24	5/24	6/24	7/24	8/24	9/24	10/24	11/24	12/24
<b>Chicago</b>	5	9	8	9	2	14	11	32	13	8	24	12
<b>Harrisburg</b>	46	54	20	40	32	34	59	53	20	51	57	87
<b>Pere Marquette</b>	3	3	1	4	2	10	11	12	21	8	0	0
<b>St. Charles</b>	10	10	18	10	0	5	40	6	9	5	24	14
<b>Warrenville</b>	39	38	55	73	52	61	34	41	46	77	24	82
<b>IDJJ Total</b>	<b>103</b>	<b>114</b>	<b>102</b>	<b>136</b>	<b>88</b>	<b>124</b>	<b>155</b>	<b>144</b>	<b>109</b>	<b>149</b>	<b>129</b>	<b>195</b>

Table 28b: Rate of Behavioral Hold

	1/24	2/24	3/24	4/24	5/24	6/24	7/24	8/24	9/24	10/24	11/24	12/24
<b>Chicago</b>	13	22	21	21	5	36	26	71	25	16	46	23
<b>Harrisburg</b>	82	100	37	74	60	65	106	104	42	102	109	163
<b>Pere Marquette</b>	24	22	8	31	16	69	68	68	116	48	0	0
<b>St. Charles</b>	28	41	71	40	0	18	82	20	29	17	79	47
<b>Warrenville</b>	168	142	193	261	153	189	94	130	125	208	68	218
<b>IDJJ Average</b>	<b>62</b>	<b>71</b>	<b>64</b>	<b>84</b>	<b>54</b>	<b>75</b>	<b>86</b>	<b>82</b>	<b>59</b>	<b>80</b>	<b>70</b>	<b>106</b>

Table 28c: Average Length of Behavioral Hold

	1/24	2/24	3/24	4/24	5/24	6/24	7/24	8/24	9/24	10/24	11/24	12/24
<b>Chicago</b>	96	81	163	38	105	84	96	146	161	144	128	155
<b>Harrisburg</b>	145	139	122	145	106	115	152	107	110	122	124	151
<b>Pere Marquette</b>	53	62	60	73	54	4	80	47	55	70	-	-
<b>St. Charles</b>	185	94	175	179	-	108	118	34	75	125	144	112
<b>Warrenville</b>	122	105	127	147	136	127	143	259	156	174	115	145
<b>IDJJ Average</b>	<b>135</b>	<b>117</b>	<b>137</b>	<b>139</b>	<b>122</b>	<b>108</b>	<b>132</b>	<b>151</b>	<b>122</b>	<b>146</b>	<b>128</b>	<b>153</b>

Table 29: Use of Crisis Care

	1/24	2/24	3/24	4/24	5/24	6/24	7/24	8/24	9/24	10/24	11/24	12/24
<b>Chicago</b>	-	-	-	-	-	-	-	4	-	-	-	-
<b>Harrisburg</b>	-	-	-	1	-	-	-	-	-	-	-	-
<b>Pere Marquette</b>	1	2	1	-	-	-	3	4	1	4	-	-
<b>St. Charles</b>	-	-	5	-	-	-	1	1	-	1	-	-
<b>Warrenville</b>	1	-	-	-	3	1	2	1	-	-	-	-
<b>IDJJ Total</b>	<b>2</b>	<b>2</b>	<b>6</b>	<b>1</b>	<b>3</b>	<b>1</b>	<b>6</b>	<b>10</b>	<b>1</b>	<b>5</b>	<b>0</b>	<b>0</b>

Table 30: Use of Medical Hold

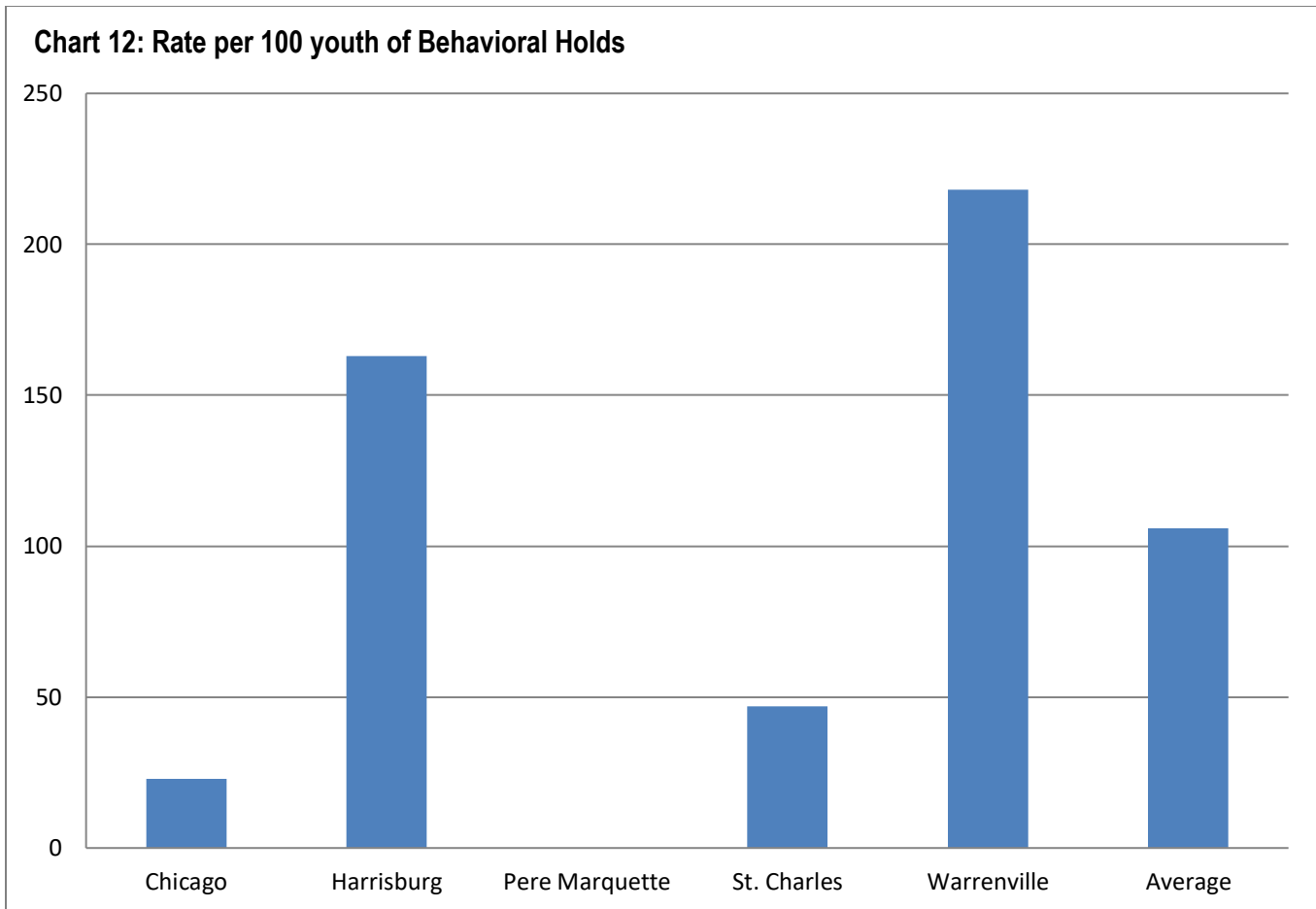
	1/24	2/24	3/24	4/24	5/24	6/24	7/24	8/24	9/24	10/24	11/24	12/24
<b>Chicago</b>	-	-	-	-	-	-	-	-	-	-	-	-
<b>Harrisburg</b>	-	-	-	-	-	-	-	-	-	-	-	-
<b>Pere Marquette</b>	-	-	-	-	-	-	-	-	-	1	-	-
<b>St. Charles</b>	7	1	-	1	-	-	1	-	-	-	1	-
<b>Warrenville</b>	1	-	-	-	-	-	-	-	-	-	-	-
<b>IDJJ Average</b>	<b>8</b>	<b>1</b>	<b>0</b>	<b>1</b>	<b>0</b>	<b>0</b>	<b>1</b>	<b>0</b>	<b>0</b>	<b>1</b>	<b>1</b>	<b>0</b>

Table 31: Use of Administrative Hold

	1/24	2/24	3/24	4/24	5/24	6/24	7/24	8/24	9/24	10/24	11/24	12/24
<b>Chicago</b>	-	-	-	-	-	53	-	12	5	-	-	18
<b>Harrisburg</b>	2	-	-	-	-	-	2	2	-	-	-	3
<b>Pere Marquette</b>	-	-	-	-	-	-	-	-	-	-	-	-
<b>St. Charles</b>	-	-	-	6	-	-	7	-	9	-	-	-
<b>Warrenville</b>	89	119	128	31	51	277	261	16	140	126	71	220
<b>IDJJ Total</b>	<b>91</b>	<b>119</b>	<b>128</b>	<b>37</b>	<b>51</b>	<b>330</b>	<b>270</b>	<b>30</b>	<b>154</b>	<b>126</b>	<b>71</b>	<b>241</b>

Table 32: Use of Investigative Status

	1/24	2/24	3/24	4/24	5/24	6/24	7/24	8/24	9/24	10/24	11/24	12/24
<b>Chicago</b>	-	-	-	-	-	-	-	-	-	-	-	-
<b>Harrisburg</b>	-	-	-	-	1	-	-	-	-	-	-	-
<b>Pere Marquette</b>	-	-	-	-	-	-	-	-	-	-	-	-
<b>St. Charles</b>	-	-	-	-	-	18	3	-	-	-	-	-
<b>Warrenville</b>	4	4	6	1	-	-	2	5	-	1	4	-
<b>IDJJ Total</b>	<b>4</b>	<b>4</b>	<b>6</b>	<b>1</b>	<b>1</b>	<b>18</b>	<b>5</b>	<b>5</b>	<b>0</b>	<b>1</b>	<b>4</b>	<b>0</b>



Section 8: Aftercare Data

Table 33: Youth Monitored by Aftercare

	1/24	2/24	3/24	4/24	5/24	6/24	7/24	8/24	9/24	10/24	11/24	12/24
<b>Total Number of Youth Assigned to Aftercare</b>	408	406	408	403	400	408	416	410	401	408	400	
<b>Youth in Community</b>	208	216	211	208	214	208	211	201	188	197	188	197
<b>Youth in Facilities</b>	120	110	109	111	104	117	116	120	125	123	125	114
<b>Youth with Pending Criminal Cases</b>	71	71	75	73	72	73	77	78	79	75	73	64
<b>Youth with Warrants and Out of State</b>	9	9	13	11	10	10	12	11	9	13	14	16

Table 34: Caseloads in Aftercare (Average per Specialist)

	1/24	2/24	3/24	4/24	5/24	6/24	7/24	8/24	9/24	10/24	11/24	12/24
<b>Youth Assigned to Specialist</b>	8.2	8.2	8.3	8.0	8.0	8.1	8.2	8.0	7.8	8.0	7.8	
<b>Youth in Community</b>	5.2	5.4	5.5	5.2	5.4	5.2	5.3	5.0	4.7	4.9	4.7	
<b>Youth in Facilities</b>	3.0	2.8	2.8	2.8	2.6	2.9	2.9	3.0	3.1	3.1	3.1	

Table 35: Average Specialist Caseload by Aftercare Office – December 2024

	Number of Specialists	Number of Youth	Average Caseload	Number of Youth in Community	Average Caseload in Community
<b>Chicago</b>	7	53	7.6	31	4.4
<b>Chicago Heights</b>	3	21	7	13	4.3
<b>Aurora</b>	2	22	11	18	9
<b>Rockford</b>	4	34	8.5	15	3.8
<b>Peoria</b>	4	36	9	26	6.5
<b>Belleville</b>	7	55	7.9	33	4.7
<b>Champaign</b>	4	35	8.8	21	5.3
<b>Springfield</b>	2	18	9	13	6.5
<b>Placement</b>	6	37	6.2	27	4.5
<b>IDJJ Total</b>	<b>40</b>	<b>311</b>	<b>7.8</b>	<b>197</b>	<b>4.9</b>

Table 36: Specialist Contact with Youth by Aftercare Office – December 2024

	Number of Overall Contacts	Contacts per Youth	Contacts with Youth in Community	Contacts per Youth in Community
<b>Chicago</b>	100	1.9	91	2.9
<b>Chicago Heights</b>	47	2.2	41	3.2
<b>Aurora</b>	60	2.7	50	2.8
<b>Rockford</b>	118	3.4	78	5.2
<b>Peoria</b>	137	3.8	108	4.2
<b>Belleville</b>	136	2.5	111	3.4
<b>Champaign</b>	133	3.8	103	4.9
<b>Springfield</b>	49	2.7	48	3.7
<b>Placement</b>	151	4.1	124	4.6
<b>IDJJ Total</b>	<b>931</b>	<b>3.0</b>	<b>754</b>	<b>3.8</b>

Table 37a: Parole Revocations



	Parole Revocations Heard	Revocations Approved	Revocations Denied	Hearings Continued
<i>January</i>	12	8	4	0
<i>February</i>	1	1	0	0
<i>March</i>	8	5	3	0
<i>April</i>	9	6	3	0
<i>May</i>	6	4	2	0
<i>June</i>	3	2	1	0
<i>July</i>	11	7	4	0
<i>August</i>	7	3	4	0
<i>September</i>	7	6	1	0
<i>October</i>	10	7	3	0
<i>November</i>	4	3	1	0
<i>December</i>	3	3	0	0
<b>IDJJ Average</b>	<b>6.8</b>	<b>4.6</b>	<b>2.2</b>	<b>0</b>

Table 37b: Parole Revocation Rates

	Percent of Revocations Approved	Percent of Revocations Denied	Percent of Hearings Continued
<i>January</i>	66.7%	33.3%	0%
<i>February</i>	100%	0%	0%
<i>March</i>	62.5%	37.5%	0%
<i>April</i>	66.7%	33.3%	0%
<i>May</i>	66.7%	33.3%	0%
<i>June</i>	66.7%	33.3%	0%
<i>July</i>	63.6%	36.4%	0%
<i>August</i>	42.9%	57.1%	0%
<i>September</i>	85.7%	14.3%	0%
<i>October</i>	70%	30%	0%
<i>November</i>	75%	25%	0%
<i>December</i>	100%	0%	0%
<b>IDJJ Average</b>	<b>72.2%</b>	<b>27.8%</b>	<b>0%</b>

With lower numbers of admission for technical parole violators, the numbers of parole revocation hearings held monthly has greatly decreased compared to previous years.

## Section 9: Population Stock/Flow

Table 38: Institutional Stock/Flow

	1/24	2/24	3/24	4/24	5/24	6/24	7/24	8/24	9/24	10/24	11/24	12/24
<b>Number of Admissions per Month</b>	32	19	36	31	25	35	39	23	34	33	31	22
<b>Percent of Admissions Parole Violators</b>	18.8%	5.3%	13.9%	19.4%	8%	11.4%	15.4%	8.7%	20.6%	9.1%	12.9%	0%
<b>Number of Facility Exits per Month</b>	33	26	34	25	32	16	38	24	27	33	26	35
<b>Percent of Exits to Aftercare Supervision</b>	90.9%	100%	97.1%	88%	93.8%	100%	92.1%	91.7%	92.6%	97.0%	100%	88.6%

Table 39: Aftercare Stock/Flow

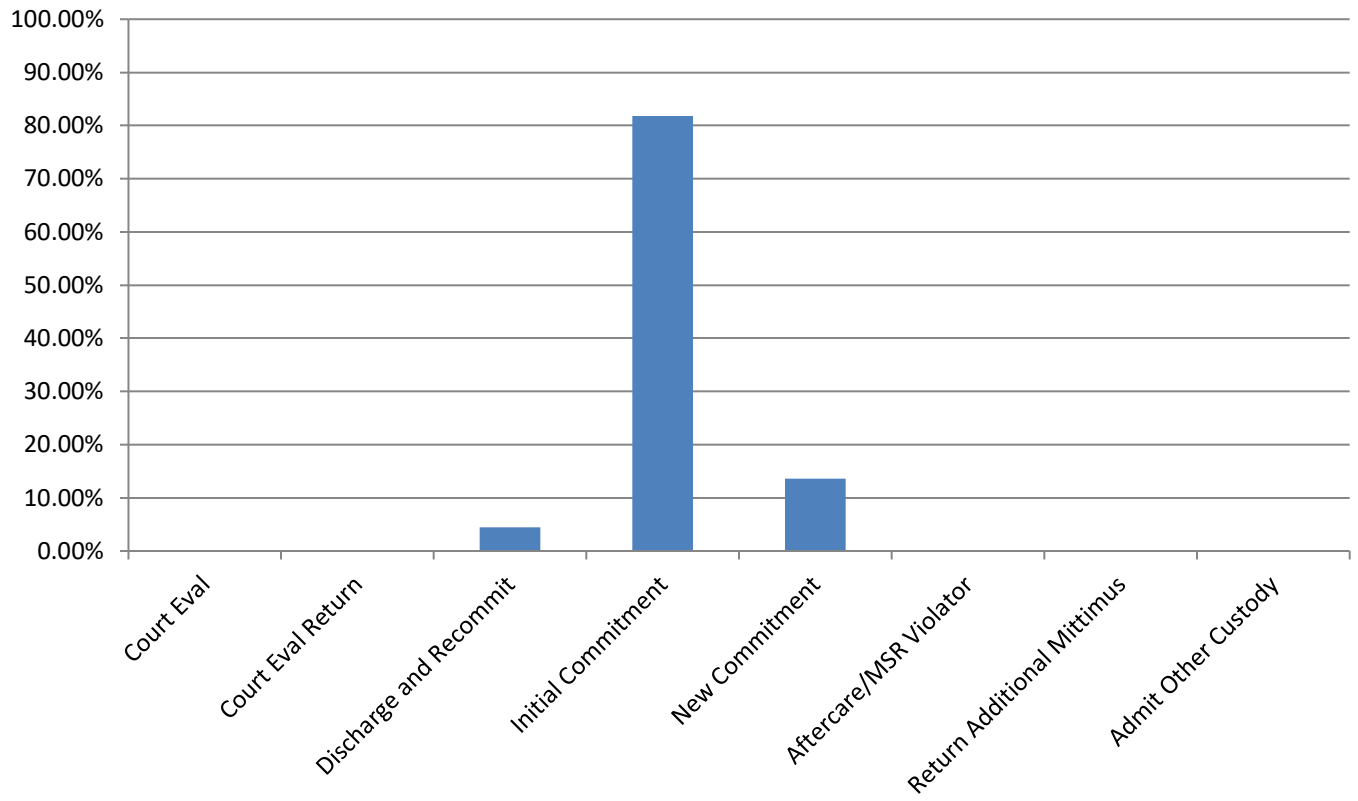
	1/24	2/24	3/24	4/24	5/24	6/24	7/24	8/24	9/24	10/24	11/24	12/24
<b>Number of New Supervised Youth</b>	32	27	34	25	34	18	36	22	25	33	26	31
<b>Number of Exits from Aftercare</b>	16	16	22	21	18	14	17	22	29	17	25	20

Table 40: Admissions to Facilities by Type

	December 2024	
	Number	Percent
<b>Court Evaluation</b>	0	0%
<b>Court Evaluation Return</b>	0	0%
<b>Discharged and Recommitted</b>	1	4.5%
<b>Initial Commitment</b>	18	81.8%
<b>New Commitment</b>	3	13.6%
<b>Aftercare/MSR Violator</b>	0	0%
<b>Return Additional Mittimus</b>	0	0%
<b>Admit from Other Custody</b>	0	0%
<b>Total</b>	<b>22</b>	

The decrease in DJJ populations is a direct effect of both decreasing court admissions, decreasing admissions for technical violations, and decreases in length of stay during the fiscal year. Additionally, rates and numbers of discharges from Aftercare have increased as well, which has helped those numbers stay lower as well, which provides fewer youth to be readmitted into facilities. Looking at the types of admissions to DJJ, a greater percent of youth are initial commitments than in previous years.

**Chart 13: Admission Types to Facility, December 2024**



**Section 10: TRD Data for December 2024**

Table 41: Adjustments by Facility

	<b>Reductions</b>	<b>Extensions</b>
<i>IYC Chicago</i>	178	26
<i>IYC Harrisburg</i>	75	67
<i>IYC Pere Marquette</i>	61	1
<i>IYC St. Charles</i>	49	10
<i>IYC Warrenville</i>	39	50
<b>Total</b>	<b>403</b>	<b>154</b>

Table 42: Types of Adjustments Used

	<b>CHI</b>	<b>HRG</b>	<b>PER</b>	<b>STC</b>	<b>WRV</b>	<b>DJJ Overall</b>
<i>BARJ Reduction</i>	0	0	0	0	0	<b>0</b>
<i>Delinquent Program Reduction</i>	2	1	1	0	0	<b>4</b>
<i>Ed/Voc Reduction</i>	21	4	20	33	0	<b>78</b>
<i>Grade Level Reduction</i>	7	2	2	1	8	<b>20</b>
<i>JSO Completion Reduction</i>	0	0	0	0	0	<b>0</b>
<i>No Maj. Sanc. Reductions</i>	15	4	4	2	12	<b>37</b>
<i>Other Tx Reduction</i>	0	6	7	0	0	<b>13</b>
<i>SA Completion Reduction</i>	14	1	4	0	3	<b>22</b>
<i>YASI Goal Reduction</i>	119	57	23	13	16	<b>229</b>
<i>Discipline Extension</i>	26	67	1	10	50	<b>154</b>

**Chart 14: Types of Adjustments used by Agency**

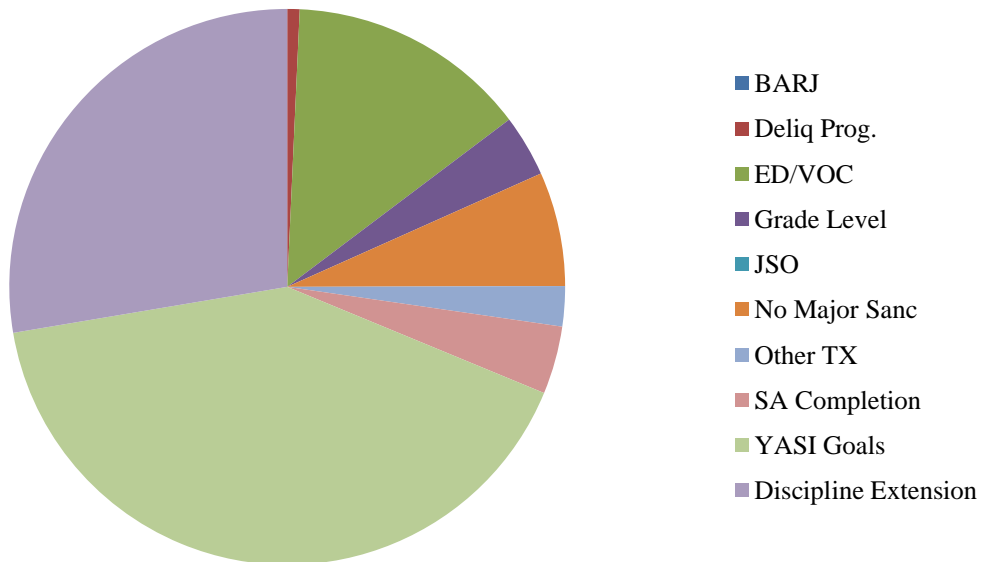


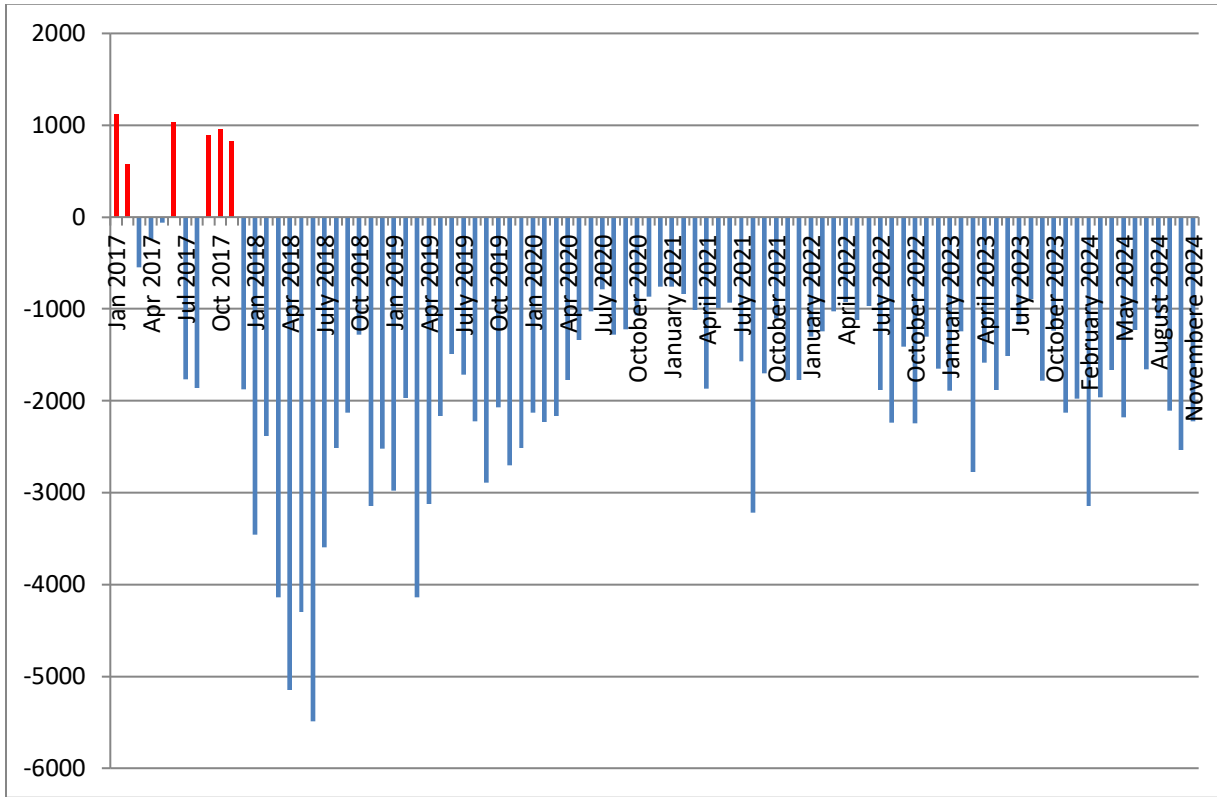
Table 45: Frequency of Discipline Extensions

	1/24	2/24	3/24	4/24	5/24	6/24	7/24	8/24	9/24	10/24	11/24	12/24
<b>IYC Chicago</b>	33	24	4	14	5	8	26	25	35	47	28	26
<b>IYC Harrisburg</b>	29	25	9	22	17	41	25	43	29	27	14	67
<b>IYC Pere Marquette</b>	1	6	2	1	3	1	5	15	25	18	2	1
<b>IYC St. Charles</b>	7	2	0	17	1	2	3	15	4	7	2	10
<b>IYC Warrenville</b>	3	2	6	14	17	5	9	4	16	16	11	50
<b>Total</b>	<b>73</b>	<b>59</b>	<b>21</b>	<b>68</b>	<b>43</b>	<b>57</b>	<b>64</b>	<b>102</b>	<b>109</b>	<b>115</b>	<b>57</b>	<b>155</b>

Table 46: Average Length of Discipline Extension

	1/24	2/24	3/24	4/24	5/24	6/24	7/24	8/24	9/24	10/24	11/24	12/24
<b>IYC Chicago</b>	10	9	4	7	9	8	9	13	8	9	10	11
<b>IYC Harrisburg</b>	5	7	6	11	5	8	11	12	8	11	8	9
<b>IYC Pere Marquette</b>	4	7	10	2	3	5	5	6	7	7	47	1
<b>IYC St. Charles</b>	24	4	0	8	5	18	24	9	14	6	20	8
<b>IYC Warrenville</b>	12	15	22	8	7	8	5	18	11	5	18	16
<b>Average</b>	<b>9</b>	<b>8</b>	<b>10</b>	<b>9</b>	<b>6</b>	<b>8</b>	<b>10</b>	<b>11</b>	<b>8</b>	<b>8</b>	<b>13</b>	<b>11</b>

Summed Total Adjustment Days by Month



**Section 11: YASI**

Table 47: YASI Pre-Screens: December 2024

	Legal Risk	Social Risk	Protective	Overall Risk
<i>High</i>	73	59	8	71
<i>Moderate</i>	20	27	45	19
<i>Low</i>	0	6	39	3
<b>Total</b>	<b>93</b>	<b>93</b>	<b>93</b>	<b>93</b>

Table 48: YASI Full Assessments: Risk

	Dynamic	Static	Overall
<i>Very High</i>	10	-	-
<i>High</i>	17	86	42
<i>Moderate-High</i>	29	-	-
<i>Moderate</i>	24	3	25
<i>Low-Moderate</i>	5	-	-
<i>Low</i>	7	3	25
<i>None</i>	0	0	0
<b>Total</b>	<b>92</b>	<b>92</b>	<b>92</b>

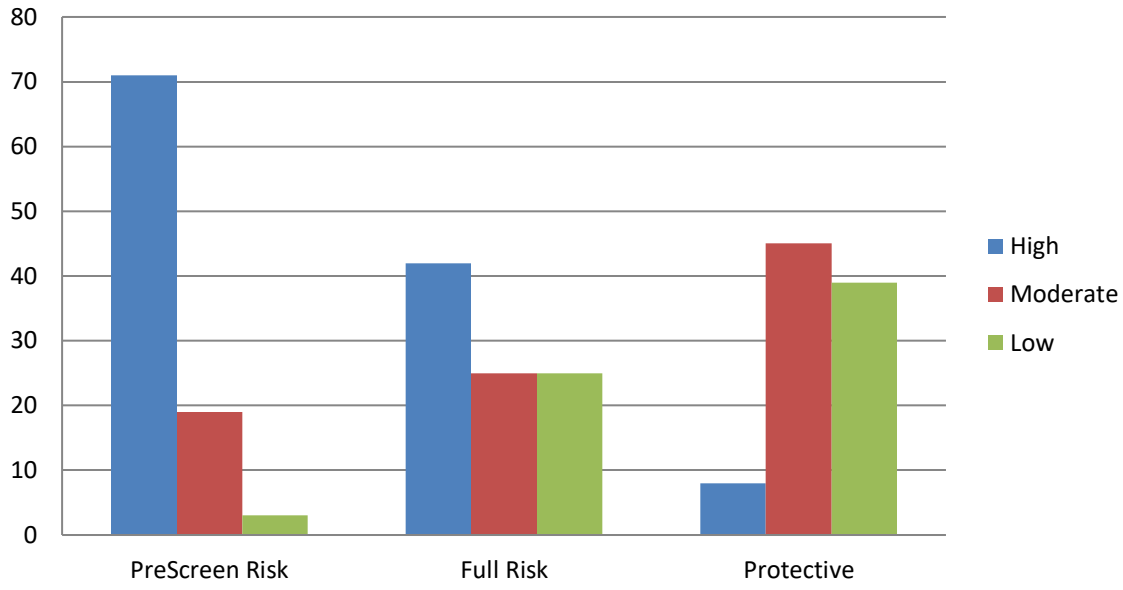
Table 49: YASI Full Assessments: Protective

	Dynamic
<i>Very High</i>	10
<i>High</i>	9
<i>Moderate-High</i>	25
<i>Moderate</i>	28
<i>Low-Moderate</i>	11
<i>Low</i>	8
<i>None</i>	1
<b>Total</b>	<b>92</b>

Table 47: Strength Factors

	Family	School	Peer/ Community	Aggression /Violence	Attitudes	Adaptive Skills	Emp/ Free Time
<i>High</i>	7	14	11	3	4	6	46
<i>Moderate</i>	21	29	47	10	16	5	0
<i>Low</i>	59	33	17	16	35	29	36
<i>None</i>	5	16	17	63	37	52	10
<b>Total</b>	<b>92</b>	<b>92</b>	<b>92</b>	<b>92</b>	<b>92</b>	<b>92</b>	<b>92</b>

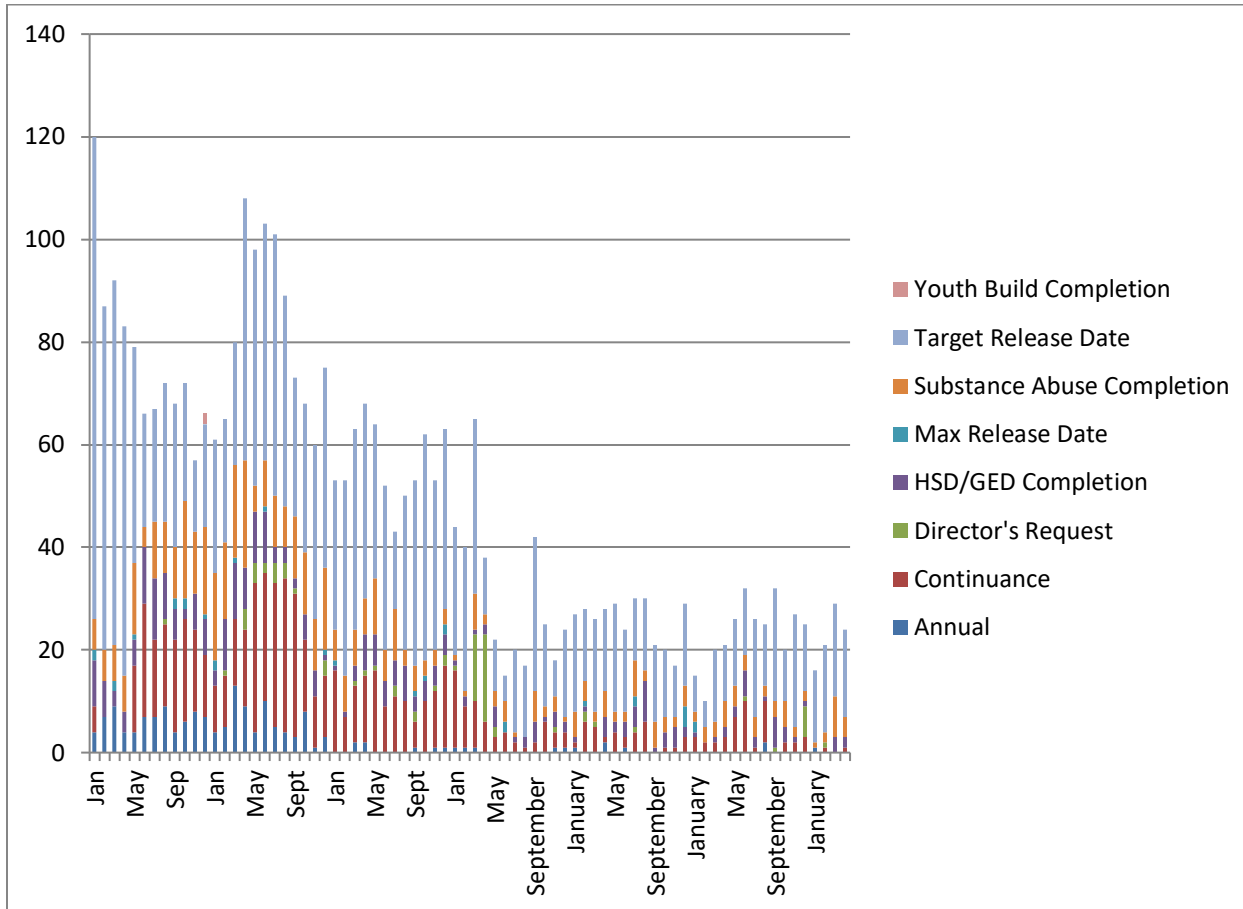
**Chart 16: Risk and Protective Levels of Youth**





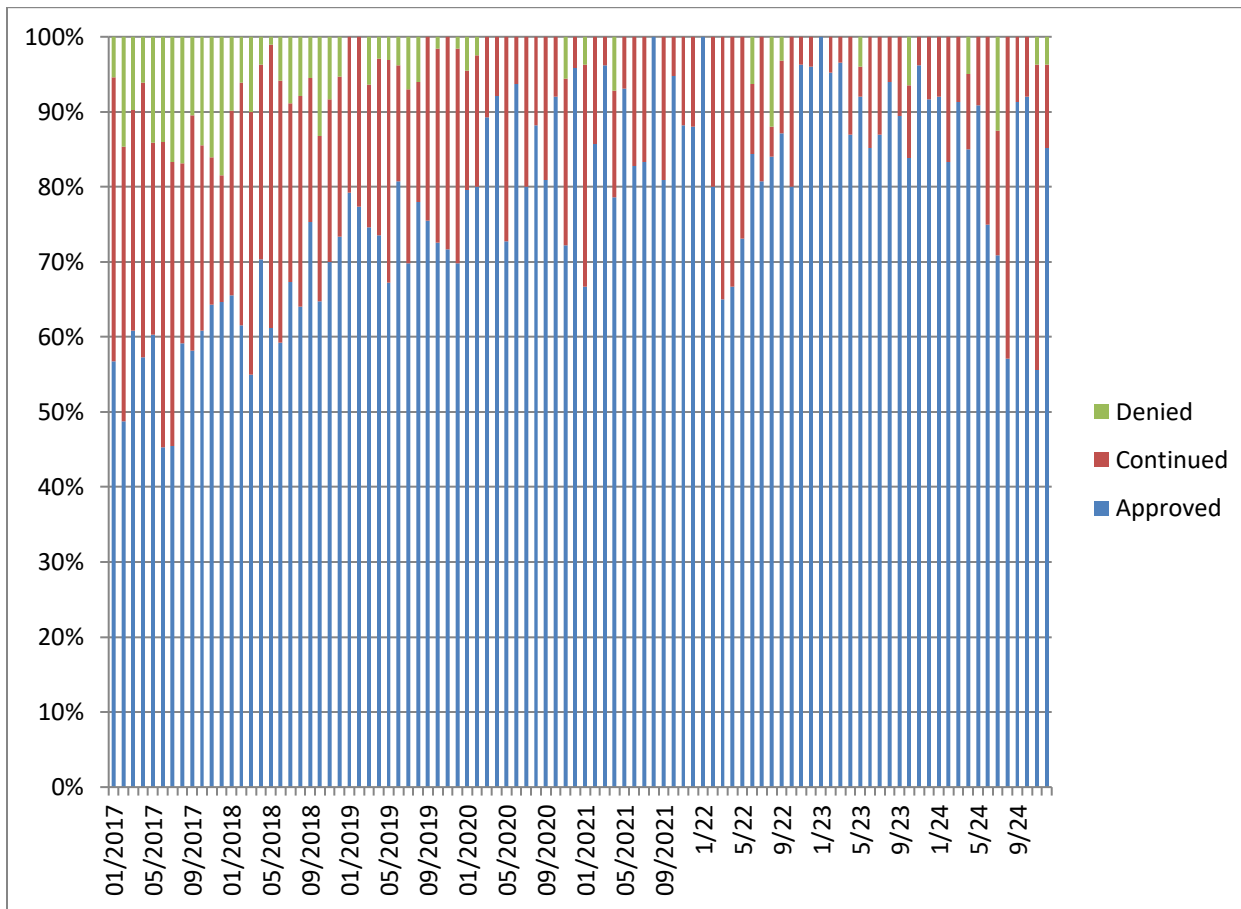
## Release Reviews

### Reviews by Type per Month



	Annual	Cont.	Director's Request	HSD/GED	Max Release Date	Substance Abuse	Target Release Date	Total
January	0	1	0	1	2	0	21	<b>25</b>
February	0	3	0	0	0	3	12	<b>18</b>
March	0	4	0	2	0	1	16	<b>23</b>
April	1	0	0	0	0	1	18	<b>20</b>
May	1	4	1	2	0	0	16	<b>24</b>
June	0	3	1	0	1	1	10	<b>16</b>
July	0	4	3	1	0	1	15	<b>24</b>
August	0	3	0	1	0	4	6	<b>14</b>
September	1	4	1	2	0	1	14	<b>23</b>
October	0	3	2	3	0	3	14	<b>25</b>
November	1	1	3	0	0	5	17	<b>27</b>
December	0	10	1	1	0	4	11	<b>27</b>

Percent of Release Reviews by Outcome and Month



## Demographic Profile for December 31<sup>st</sup>, 2024

Sex	Institutions		Aftercare	
	Number	Percent	Number	Percent
Male	165	94.3%	269	95.4%
Female	10	5.7%	13	4.6%

Age	Institutions		Aftercare	
	Number	Percent	Number	Percent
Average Age	17.6		18.0	
16 & Under	59	33.7%	69	24.5%
17 to 20	114	65.1%	205	72.7%
20.5 & Over	2	1.1%	7	2.5%

Race/Ethnicity	Institutions		Aftercare	
	Number	Percent	Number	Percent
White	28	16.0%	53	18.8%
Black	117	66.9%	193	68.4%
Hispanic	22	12.6%	23	8.2%
Middle Eastern	0	0%	0	0%
Multi/Biracial	8	4.6%	13	4.6%

Committing Counties <sup>1</sup>	Institutions		Aftercare	
	Number	Percent	Number	Percent
Cook	51	29.1%	89	31.6%
Collar Counties	15	8.6%	19	6.7%
Metro-East	13	7.4%	13	4.6%
Central	58	33.1%	86	30.5%
Southern	11	6.3%	17	6.0%
Northern	27	15.4%	46	16.3%
Out of State	0	0%	12	4.2%

<sup>1</sup> Committing Counties: Cook = Cook; Collar Counties = DuPage, Kane, Lake, McHenry, Will; Metro East Counties = Madison, St. Clair; Central IL Counties = Adams, Bond, Brown, Calhoun, Cass, Champaign, Christian, Clark, Coles, Crawford, Cumberland, Dewitt, Douglas, Edgar, Effingham, Fayette, Ford, Fulton, Greene, Hancock, Henderson, Iroquois, Jasper, Jersey, Knox, Livingston, Logan, McDonough, McLean, Macon, Macoupin, Marshall, Mason, Menard, Montgomery, Morgan, Moultrie, Peoria, Piatt, Pike, Sangamon, Schuyler, Scott, Shelby, Stark, Tazewell, Vermillion Warren, Woodford; South IL Counties = Alexander, Clay, Clinton, Edwards, Franklin, Gallatin, Hamilton, Hardin, Jackson, Jefferson, Johnson, Lawrence, Marion, Massac, Monroe, Perry, Pope, Pulaski, Randolph, Richland, Saline, Union, Wabash, Washington, Wayne, White, Williamson; North, IL Counties = Boone, Bureau, Carroll, DeKalb, Grundy, Henry, Jo-Daviess, Kankakee, Kendall, LaSalle, Lee, Mercer, Ogle, Putnam, Rock Island, Stephenson, Whiteside, Winnebago; Other = Out of State

Offense Class	Institutions		Aftercare	
	Number	Percent	Number	Percent
Murder	26	14.9%	3	1.1%
Class X Felony	50	28.6%	77	27.3%
Class 1 Felony	38	21.7%	62	22.0%
Class 2 Felony	36	20.6%	94	33.3%
Class 3 Felony	18	10.3%	18	6.4%
Class 4 Felony	7	4.0%	16	5.7%

Offense Class by Race	Black	White	Hispanic	Bi/Multiracial
Murder	20	3	6	0
Class X Felony	100	19	7	1
Class 1 Felony	78	10	6	6
Class 2 Felony	70	33	20	7
Class 3 Felony	17	9	4	6
Class 4 Felony	16	5	1	1
<b>Total</b>	<b>301</b>	<b>79</b>	<b>44</b>	<b>21</b>

*This table provides a summary of all youth in DJJ (both facilities and Aftercare) relating to their race and holding offense crime class. The numbers in the table and the raw number of youth in a category.*

Prefix	Institutions		Aftercare	
	Number	Percent	Number	Percent
Court Evaluation	4	2.3%	233	82.6%
Delinquent	67	38.3%	12	4.3%
Extended Jurisdiction	5	2.9%	6	2.1%
Felon	64	36.6%	3	1.1%
First Degree Murderer	13	7.4%	16	5.7%
Habitual Juvenile	8	4.6%	0	0%
Violent Juvenile	14	8.0%	16	5.7%
From Other State	0	0%	12	4.3%

## Aftercare Completion – December 2024

### Characteristics of Youth Exiting Aftercare

*Youth exiting aftercare are youth that are being discharged from IDJJ custody and youth that are entering an IDJJ facility*

Sex	Aftercare Exits	
	Number	Percent
Male	22	95.7%
Female	1	4.3%

Age	Aftercare Exits	
	Number	Percent
Average Age	18.5	
16 & Under	2	8.7%
17 to 20	19	82.6%
20.5 & Over	2	8.7%

Committing Counties <sup>2</sup>	Aftercare Exits	
	Number	Percent
Cook	6	26.1%
Collar Counties	0	0%
Metro-East	2	8.7%
Central	12	52.2%
Southern	1	4.3%
Northern	2	8.7%
Out of State	0	0%

Race/Ethnicity	Aftercare Exits	
	Number	Percent
White	4	17.4%
Black	17	73.9%
Hispanic	2	8.7%
Asian/Pacific Islander	0	0%
Multi/Biracial	0	0%

<sup>2</sup> Committing Counties: Cook = Cook; Collar Counties = DuPage, Kane, Lake, McHenry, Will; Metro East Counties = Madison, St. Clair; Central IL Counties = Adams, Bond, Brown, Calhoun, Cass, Champaign, Christian, Clark, Coles, Crawford, Cumberland, Dewitt, Douglas, Edgar, Effingham, Fayette, Ford, Fulton, Greene, Hancock, Henderson, Iroquois, Jasper, Jersey, Knox, Livingston, Logan, McDonough, McLean, Macon, Macoupin, Marshall, Mason, Menard, Montgomery, Morgan, Moultrie, Peoria, Piatt, Pike, Sangamon, Schuyler, Scott, Shelby, Stark, Tazewell, Vermillion Warren, Woodford; South IL Counties = Alexander, Clay, Clinton, Edwards, Franklin, Gallatin, Hamilton, Hardin, Jackson, Jefferson, Johnson, Lawrence, Marion, Massac, Monroe, Perry, Pope, Pulaski, Randolph, Richland, Saline, Union, Wabash, Washington, Wayne, White, Williamson; North, IL Counties = Boone, Bureau, Carroll, DeKalb, Grundy, Henry, Jo-Daviess, Kankakee, Kendall, LaSalle, Lee, Mercer, Ogle, Putnam, Rock Island, Stephenson, Whiteside, Winnebago; Other = Out of State

Offense Class	Aftercare Exits	
	Number	Percent
Murder	0	0%
Class X Felony	5	21.7%
Class 1 Felony	6	26.1%
Class 2 Felony	7	30.4%
Class 3 Felony	3	13.0%
Class 4 Felony	2	8.7%

Prefix	Aftercare Exits	
	Number	Percent
Court Evaluation	0	0%
Delinquent	20	87%
Extended Jurisdiction	1	4.3%
Felon	2	8.7%
First Degree Murderer	0	0%
Habitual Juvenile	0	0%
Violent Juvenile	0	0%
From Other State	0	0%

Discharge Reason	Aftercare Exits	
	Number	Percent
Admitted to Institution	3	13.0%
Aftercare Discharge	12	52.2%
Adult Sentence Discharge	6	26.1%
Transfer to Adult Parole	0	0%
Court Ordered Discharge	1	4.3%
Discharged from Illinois Custody	0	0%
Statutory Discharge	1	4.3%
Death	0	0%
Vacated Commitment Order	0	0%
Expiration of Sentence	0	0%

Youth Admitted to Institutions	Aftercare Exits	
	Number	Percent
Technical Violators	0	0%
New Commitments	3	100%

## Youth Outcomes at Discharge from Aftercare – December 2024

These are youth outcomes are for youth discharging Aftercare

