

+



**Monthly Report:  
December 2025**

**FY2026**

## Section 1: Population and Staffing Data

Table 1a: Population by Facility

	1/25	2/25	3/25	4/25	5/25	6/25	7/25	8/25	9/25	10/25	11/25	12/25
<b>Chicago</b>	46	42	40	42	44	43	49	54	52	52	50	50
<b>Harrisburg</b>	56	63	67	60	56	58	61	65	73	60	55	57
<b>Monarch</b>	-	-	-	-	-	-	-	-	-	-	2	11
<b>Pere Marquette</b>	14	16	17	16	17	17	14	18	16	19	18	18
<b>St. Charles</b>	30	30	30	40	41	39	49	41	38	36	31	37
<b>Warrenville*</b>	32	26	26	25	31	36	36	45	45	44	32	34
<b>IDJJ Total</b>	<b>178</b>	<b>177</b>	<b>180</b>	<b>183</b>	<b>189</b>	<b>193</b>	<b>209</b>	<b>223</b>	<b>224</b>	<b>211</b>	<b>213</b>	<b>207</b>

\*Due to fire, the Warrenville Population is being housed at St. Charles.

Table 1b: Average Daily Population by Facility

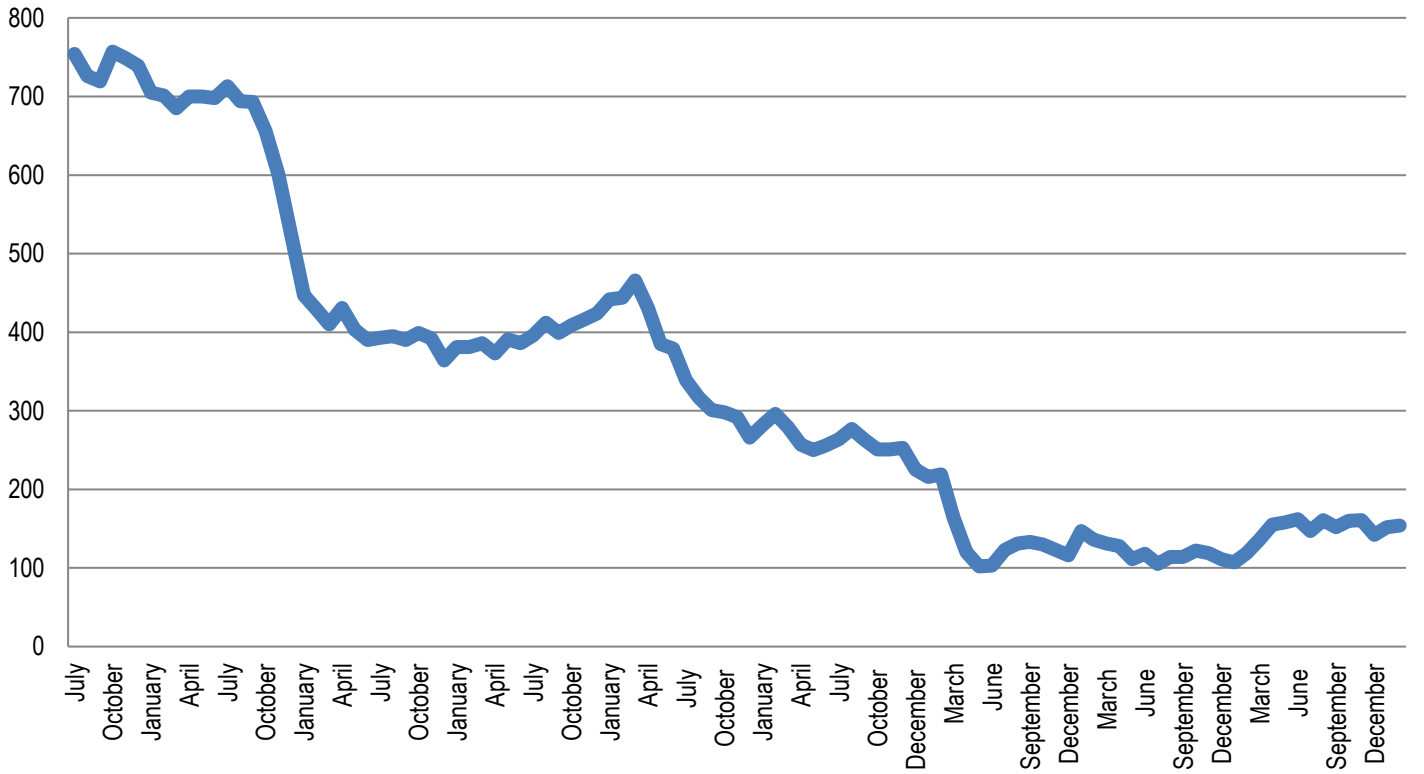
	1/25	2/25	3/25	4/25	5/25	6/25	7/25	8/25	9/25	10/25	11/25	12/25
<b>Chicago</b>	43.5	44.9	42.2	40.8	45.5	46.5	46.2	50.4	52.5	48.6	52.1	50.2
<b>Harrisburg</b>	57.4	61.1	66.1	64.7	58.3	57.4	60.3	61.5	70.1	66.6	61.8	57.9
<b>Monarch</b>	-	-	-	-	-	-	-	-	-	-	1.1	7.2
<b>Pere Marquette</b>	10.9	14.3	16.0	15.6	16.8	17.8	15.4	17.1	18.2	17.8	19.1	18.4
<b>St. Charles</b>	31.4	29.0	30.6	36.1	38.1	39.5	48.2	44.2	40.4	34.8	35.9	36.4
<b>Warrenville*</b>	32.2	27.8	26.2	22.6	26.2	30.3	31.0	39.0	44.8	43.8	41.3	37.1
<b>IDJJ Total</b>	<b>175.5</b>	<b>176.8</b>	<b>181.0</b>	<b>179.8</b>	<b>184.9</b>	<b>191.5</b>	<b>201.0</b>	<b>212.2</b>	<b>225.6</b>	<b>211.7</b>	<b>211.3</b>	<b>207.2</b>

\*Due to fire, the Warrenville Population is being housed at St. Charles.

Table 2: Security Staff Headcount by Facility

	1/25	2/25	3/25	4/25	5/25	6/25	7/25	8/25	9/25	10/25	11/25	12/25
<b>Chicago</b>	71	70	71	72	74	77	77	76	74	78	76	74
<b>Harrisburg</b>	114	112	110	111	109	106	107	107	106	105	105	104
<b>Lincoln</b>	-	-	-	-	-	-	38	38	38	42	42	41
<b>Pere Marquette</b>	38	37	39	38	39	40	37	37	37	45	44	42
<b>St. Charles</b>	59	59	67	69	65	67	65	63	64	73	73	72
<b>Warrenville</b>	60	57	59	56	54	63	58	59	58	67	66	65
<b>IDJJ Total</b>	<b>342</b>	<b>335</b>	<b>346</b>	<b>346</b>	<b>341</b>	<b>353</b>	<b>382</b>	<b>380</b>	<b>377</b>	<b>410</b>	<b>406</b>	<b>398</b>

**Chart 1: Facility Populations on Last Day of Month Last Nine Fiscal Years**



## Section 2: Mental Health Data

Table 5: Percent of Youth Psychotropic Medication

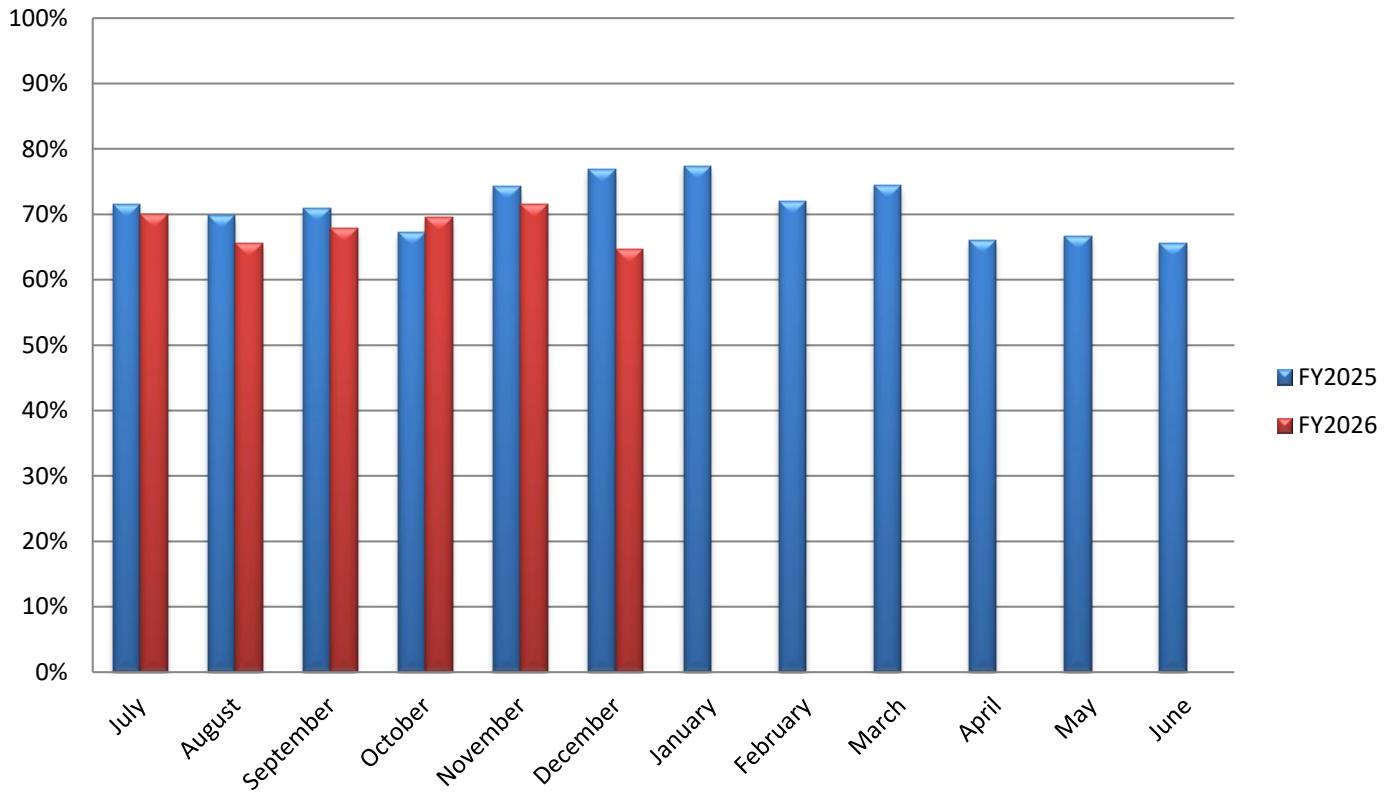
	1/25	2/25	3/25	4/25	5/25	6/25	7/25	8/25	9/25	10/25	11/25	12/25
<b>Chicago</b>	87.3%	78.0%	81.2%	74.5%	74.5%	74.5%	72.1%	64.6%	68.7%	70.1%	71.9%	70%
<b>Harrisburg</b>	72.0%	65.9%	63.5%	61.1%	65.1%	64.6%	65.2%	68.8%	70%	73.8%	69.9%	57.8%
<b>Monarch</b>	-	-	-	-	-	-	-	-	-	-	0%	45.5%
<b>Pere Marquette</b>	88.2%	88.2%	82.5%	71.4%	65%	68.4%	65%	61.9%	80%	79.2%	87%	81.8%
<b>St. Charles</b>	58.1%	53.7%	56.4%	63.3%	56.7%	46.7%	64.1%	51.6%	46.9%	50%	55.4%	45.9%
<b>Warrenville</b>	90.5%	89.2%	90.1%	67.6%	75%	81.0%	80%	78.0%	81%	81.8%	89.4%	90%
<b>IDJJ Average</b>	<b>77.4%</b>	<b>71.9%</b>	<b>74.4%</b>	<b>66.0%</b>	<b>66.7%</b>	<b>65.5%</b>	<b>70%</b>	<b>65.6%</b>	<b>67.8%</b>	<b>69.5%</b>	<b>71.6%</b>	<b>64.6%</b>

Table 7: Distribution of Mental Health Levels

	Mental Health Level 0	Mental Health Level 1	Mental Health Level 2	Mental Health Level 3	Mental Health Level 4
<b>January</b>	0.0%	30.1%	67.4%	2.5%	0.0%
<b>February</b>	0.0%	30.0%	65.9%	4.1%	0.0%
<b>March</b>	0.0%	29.8%	66.2%	3.9%	0.0%
<b>April</b>	0.0%	34.3%	59.1%	6.5%	0.0%
<b>May</b>	0.0%	37.9%	55.6%	6.5%	0.0%
<b>June</b>	0.0%	32.8%	59.8%	7.5%	0.0%
<b>July</b>	0.0%	34.2%	57.6%	8.3%	0.0%
<b>August</b>	0.0%	31.6%	58.2%	10.2%	0.0%
<b>September</b>	0.3%	27.8%	62.5%	9.4%	0.0%
<b>October</b>	0.0%	31.0%	58.5%	10.5%	0.0%
<b>November</b>	0.0%	33.2%	59.2%	7.5%	0.0%
<b>December</b>	0.0%	31.3%	59.2%	9.6%	0.0%
<b>IDJJ Average</b>	<b>0.0%</b>	<b>32.0%</b>	<b>60.8%</b>	<b>7.2%</b>	<b>0.0%</b>

In January 2025, Mental Health Levels were re-defined to better reflect youth needs.

### Percent of Youth on Psychotropic Medication by Fiscal Year



### Section 3: Substance Abuse Treatment Data

Table 9: Number of Treatment Participants

	1/25	2/25	3/25	4/25	5/25	6/25	7/25	8/25	9/25	10/25	11/25	12/25
<b>Chicago</b>	21	25	23	24	22	19	20	19	17	12	23	21
<b>Harrisburg</b>	20	21	21	18	19	23	16	23	19	20	20	22
<b>Monarch</b>	-	-	-	-	-	-	-	-	-	-	1	2
<b>Pere Marquette</b>	7	5	10	9	6	3	0	0	0	0	0	0
<b>St. Charles</b>	1	1	2	2	2	3	1	3	3	6	6	3
<b>Warrenville</b>	12	14	11	10	9	16	16	13	15	21	20	24
<b>IDJJ Total</b>	<b>61</b>	<b>66</b>	<b>67</b>	<b>63</b>	<b>58</b>	<b>64</b>	<b>53</b>	<b>58</b>	<b>54</b>	<b>59</b>	<b>70</b>	<b>72</b>

Table 10: Average Length of Stay for Completers

	1/25	2/25	3/25	4/25	5/25	6/25	7/25	8/25	9/25	10/25	11/25	12/25
<b>Chicago</b>	76	69	69	106	86	92	91	141	87	90	140	156
<b>Harrisburg</b>	91	88	102	96	73	62	79	-	-	38	81	110
<b>Monarch</b>	-	-	-	-	-	-	-	-	-	-	-	-
<b>Pere Marquette</b>	128	-	112	89	91	85	-	-	-	-	-	-
<b>St. Charles</b>	-	-	-	-	67	-	-	-	92	-	89	-
<b>Warrenville</b>	106	90	-	126	87	91	88	94	-	92	88	92
<b>IDJJ Average</b>	<b>102</b>	<b>86</b>	<b>94</b>	<b>98</b>	<b>82</b>	<b>82</b>	<b>87</b>	<b>118</b>	<b>89</b>	<b>78</b>	<b>93</b>	<b>124</b>

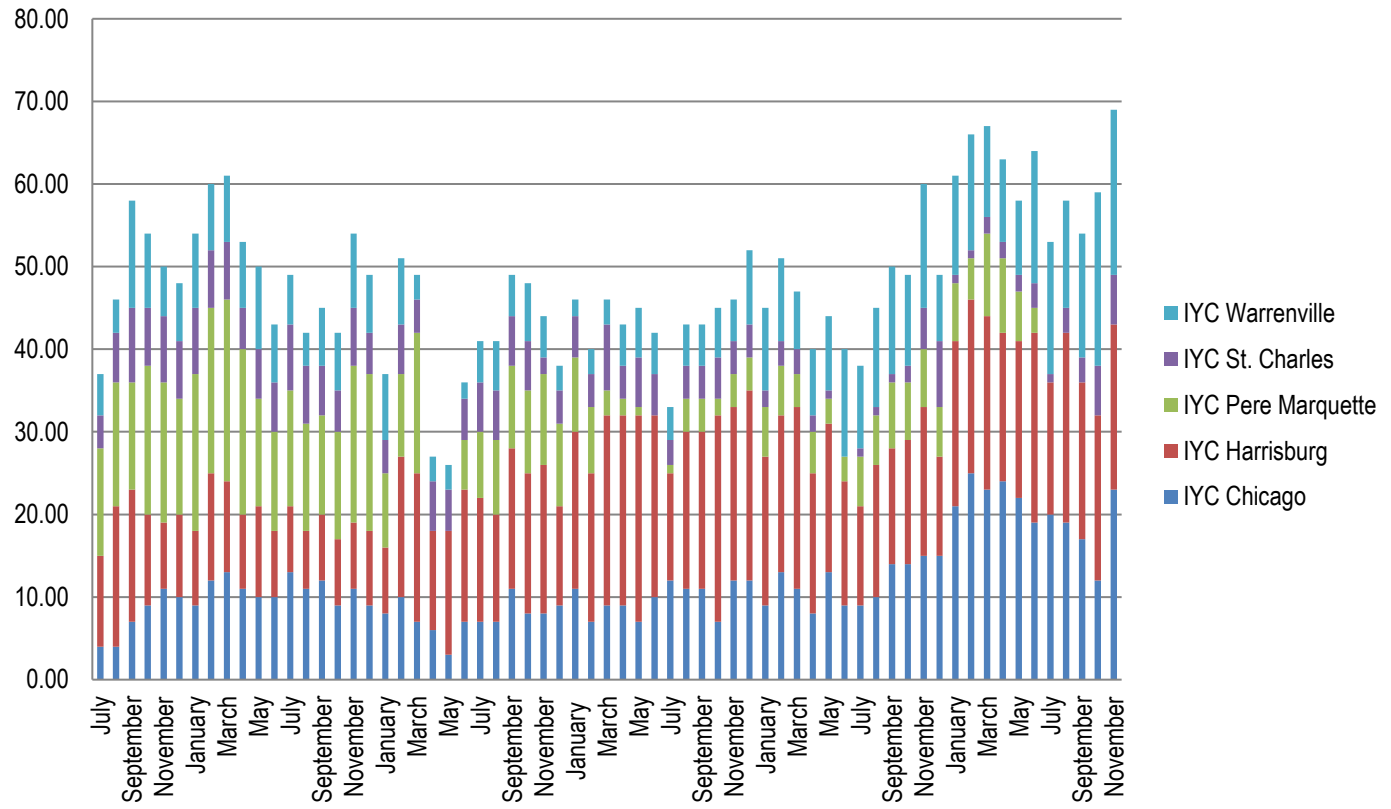
Table 11: Percent of Discharges by Reason

	1/25	2/25	3/25	4/25	5/25	6/25	7/25	8/25	9/25	10/25	11/25	12/25
<b>Successful Completion</b>	66.7%	44.4%	42.1%	76.9%	53.3%	43.8%	60%	20%	33.3%	56.3%	78.6%	31.8%
<b>Behavioral Discharge</b>	0%	16.7%	0%	0%	0%	0%	20%	20%	11.1%	6.3%	0%	27.3%
<b>Youth Released</b>	13.3%	27.8%	31.6%	7.7%	40%	25%	20%	20%	33.3%	37.5%	14.3%	22.7%
<b>Other Discharge</b>	20%	11.1%	26.3%	15.4%	6.7%	31.3%	0%	40%	22.2%	0%	7.1%	18.2%

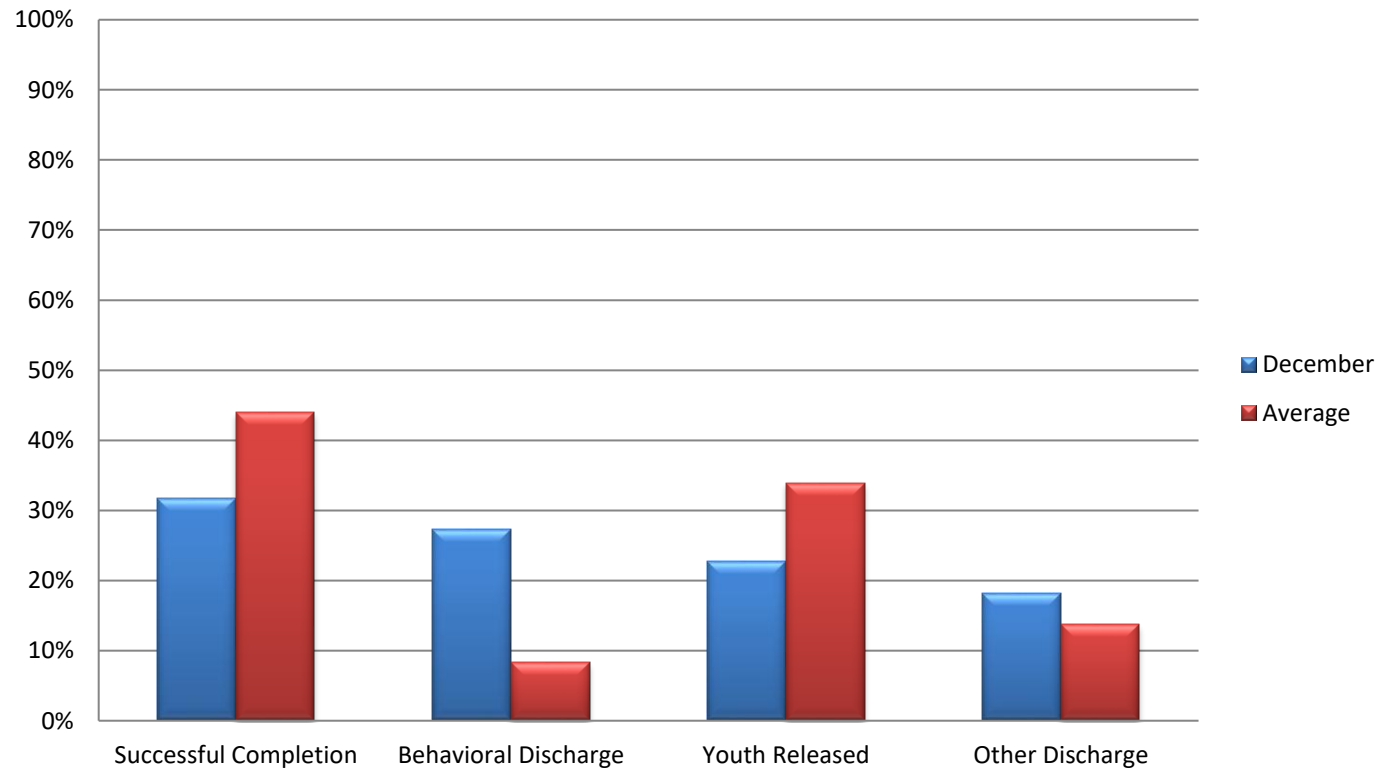
Table 12: Primary Substance Abused

	1/25	2/25	3/25	4/25	5/25	6/25	7/25	8/25	9/25	10/25	11/25	12/25
<b>Marijuana</b>	59.0%	59.4%	59.7%	64.1%	59.1%	56.6%	50%	56.9%	63.8%	60.8%	61.4%	62.8%
<b>Alcohol</b>	9.8%	9.4%	6.0%	1.6%	4.5%	3.8%	6.7%	8.6%	10.6%	5.9%	4.3%	4.7%
<b>Opioids</b>	13.1%	18.8%	14.9%	14.1%	13.6%	11.3%	15%	10.3%	8.5%	13.7%	18.6%	18.6%
<b>Other Drugs</b>	18.0%	12.5%	17.9%	20.3%	22.7%	28.3%	28.3%	24.1%	17.0%	19.6%	15.7%	14%
<b>No Diagnosis</b>	0%	0%	1.5%	0%	0%	0%	0%	0%	0%	0%	0%	0%

**Chart 5: Number of Treatment Participants by Facility**



**Chart 6: Discharges by Reason**



## Section 4: Education Data

Table 13: Students Enrolled in School

	1/25	2/25	3/25	4/25	5/25	6/25	7/25	8/25	9/25	10/25	11/25	12/25
<b>Chicago</b>	31	30	29	29	38	33	33	35	35	35	34	33
<b>Harrisburg</b>	65	58	66	63	57	54	61	60	65	59	57	50
<b>Monarch</b>	-	-	-	-	-	-	-	-	-	-	-	-
<b>Pere Marquette</b>	6	8	11	13	13	11	9	12	12	14	12	11
<b>St. Charles</b>	-	-	-	-	-	-	-	-	-	-	-	-
<b>Warrenville</b>	40	35	41	29	37	41	42	42	54	53	42	43
<b>IDJJ Total</b>	<b>142</b>	<b>131</b>	<b>147</b>	<b>134</b>	<b>145</b>	<b>139</b>	<b>145</b>	<b>149</b>	<b>166</b>	<b>161</b>	<b>145</b>	<b>132</b>

Table 14: Teachers Employed

	1/25	2/25	3/25	4/25	5/25	6/25	7/25	8/25	9/25	10/25	11/25	12/25
<b>Chicago</b>	12	12	11	11	10	12	12	11	11	11	11	10
<b>Harrisburg</b>	11	11	11	11	11	8	8	7	6	6	6	6
<b>Monarch</b>	-	-	-	-	-	-	-	-	-	-	-	-
<b>Pere Marquette</b>	6	6	6	6	6	5	6	5	5	5	5	4
<b>St. Charles</b>	1	1	1	1	1	-	-	1	1	1	1	1
<b>Warrenville</b>	13	13	13	14	15	14	15	13	13	13	13	13
<b>IDJJ Total</b>	<b>43</b>	<b>43</b>	<b>41</b>	<b>43</b>	<b>43</b>	<b>39</b>	<b>41</b>	<b>37</b>	<b>36</b>	<b>36</b>	<b>36</b>	<b>33</b>

Table 15: Student to Teacher Ratio

	1/25	2/25	3/25	4/25	5/25	6/25	7/25	8/25	9/25	10/25	11/25	12/25
<b>Chicago</b>	2.6	2.5	2.6	2.6	3.8	2.8	2.8	3.2	3.2	3.2	3.1	3.3
<b>Harrisburg</b>	5.9	5.3	6.0	5.7	5.2	6.8	7.6	8.6	10.8	9.8	9.5	8.3
<b>Monarch</b>	-	-	-	-	-	-	-	-	-	-	-	-
<b>Pere Marquette</b>	1	1.3	1.8	2.2	2.2	2.2	1.5	2.4	2.4	2.8	2.4	2.8
<b>St. Charles</b>	-	-	-	-	-	-	-	-	-	-	-	-
<b>Warrenville</b>	3.0	2.7	3.2	2.1	2.5	2.9	2.8	3.2	4.2	4.1	3.2	3.3
<b>IDJJ Average</b>	<b>3.4</b>	<b>3.0</b>	<b>3.6</b>	<b>3.1</b>	<b>3.4</b>	<b>3.6</b>	<b>3.5</b>	<b>4.0</b>	<b>4.6</b>	<b>4.5</b>	<b>4.0</b>	<b>4</b>

Table 17: Overall Diplomas Awarded

	1/25	2/25	3/25	4/25	5/25	6/25	7/25	8/25	9/25	10/25	11/25	12/25	Total
<b>Chicago</b>	3	0	0	2	4	4	3	2	4	1	0	0	<b>23</b>
<b>Harrisburg</b>	1	3	1	5	0	1	0	1	2	2	0	0	<b>16</b>
<b>Monarch</b>	-	-	-	-	-	-	-	-	-	-	-	-	
<b>Pere Marquette</b>	0	1	0	0	3	2	1	2	2	0	3	0	<b>14</b>
<b>St. Charles</b>	-	-	-	-	-	-	-	-	-	-	-	-	
<b>Warrenville</b>	0	2	0	3	1	0	4	0	1	0	0	0	<b>11</b>
<b>IDJJ Total</b>	<b>4</b>	<b>6</b>	<b>1</b>	<b>10</b>	<b>8</b>	<b>7</b>	<b>8</b>	<b>5</b>	<b>9</b>	<b>3</b>	<b>3</b>	<b>0</b>	<b>64</b>

Table 18: Percent of Special Education Students

	1/25	2/25	3/25	4/25	5/25	6/25	7/25	8/25	9/25	10/25	11/25	12/25
<b>Chicago</b>	35.5%	33.3%	34.5%	51.7%	42.1%	36.4%	36.4%	22.9%	40%	42.9%	44.1%	42.4%
<b>Harrisburg</b>	49.2%	46.6%	50%	55.6%	35.1%	50%	45.9%	48.3%	52.3%	50.9%	47.4%	52%
<b>Monarch</b>	-	-	-	-	-	-	-	-	-	-	-	-
<b>Pere Marquette</b>	16.7%	37.5%	36.4%	46.2%	30.8%	27.3%	22.2%	25%	33.3%	28.6%	50%	45.5%
<b>St. Charles</b>	-	-	-	-	-	-	-	-	-	-	-	-
<b>Warrenville</b>	27.5%	54.3%	41.5%	62.1%	62.2%	58.5%	59.5%	61.9%	59.3%	50.9%	54.8%	55.8%
<b>IDJJ Total</b>	<b>38.7%</b>	<b>45.0%</b>	<b>43.5%</b>	<b>55.2%</b>	<b>43.4%</b>	<b>47.5%</b>	<b>46.2%</b>	<b>44.3%</b>	<b>50.6%</b>	<b>47.2%</b>	<b>49.0%</b>	<b>52.3%</b>

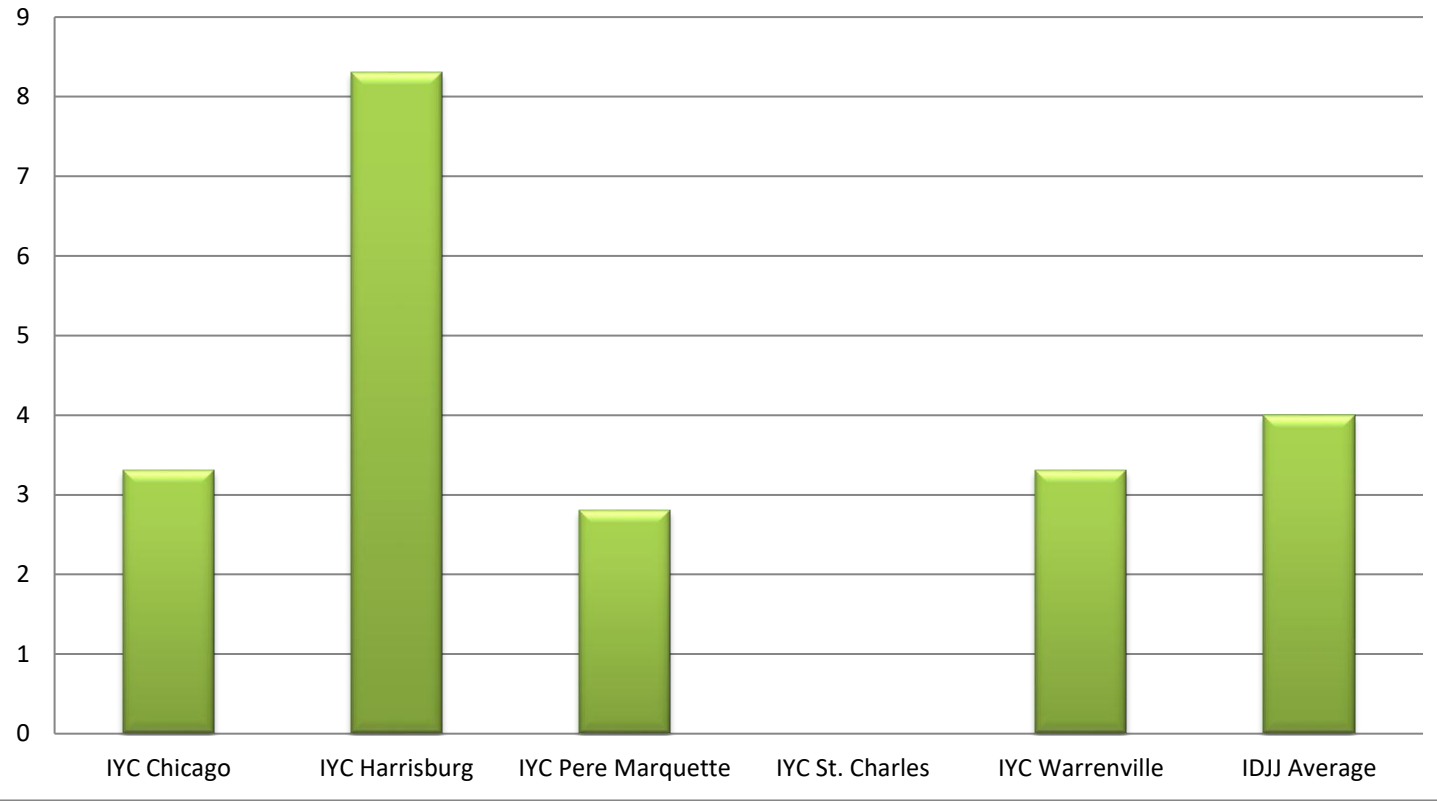
Table 20: Youth in Continuing Education

	Post-Secondary	Collegiate
<b>Chicago</b>	2	0
<b>Harrisburg</b>	0	0
<b>Monarch</b>	0	0
<b>Pere Marquette</b>	0	0
<b>St. Charles</b>	0	0
<b>Warrenville</b>	0	0
<b>IDJJ Total</b>	<b>2</b>	<b>0</b>

Table 21: Number and Percent of Cancelled Whole School Days

	Number	Percent
<b>Chicago</b>	0	0%
<b>Harrisburg</b>	0	0%
<b>Monarch</b>	-	-
<b>Pere Marquette</b>	0	0%
<b>St. Charles</b>	-	-
<b>Warrenville</b>	3	15%
<b>IDJJ Total</b>	<b>3</b>	<b>4%</b>

**Chart 7: Student to Teacher Ratio by Facility**



## Section 5: Reportable Incident Data

Table 21a: Number of Reportable Incidents

	1/25	2/25	3/25	4/25	5/25	6/25	7/25	8/25	9/25	10/25	11/25	12/25
<b>Chicago</b>	11	13	15	11	11	17	14	18	24	13	22	13
<b>Harrisburg</b>	31	22	23	19	20	25	23	41	49	65	47	29
<b>Monarch</b>	-	-	-	-	-	-	-	-	-	-	0	3
<b>Pere Marquette</b>	1	6	7	7	5	6	1	5	12	16	16	6
<b>St. Charles</b>	2	2	5	6	3	4	6	7	8	11	4	7
<b>Warrenville</b>	8	16	13	28	14	23	36	47	37	23	17	23
<b>IDJJ Total</b>	<b>53</b>	<b>59</b>	<b>63</b>	<b>71</b>	<b>53</b>	<b>75</b>	<b>80</b>	<b>118</b>	<b>130</b>	<b>128</b>	<b>106</b>	<b>81</b>

Table 21b: Rate of Reportable Incidents per 100 Youth

	1/25	2/25	3/25	4/25	5/25	6/25	7/25	8/25	9/25	10/25	11/25	12/25	Avg.
<b>Chicago</b>	25.3	29.0	35.5	27.0	24.2	36.6	30.3	35.7	45.7	26.7	42.2	25.9	<b>32.0</b>
<b>Harrisburg</b>	54.0	36.0	34.8	29.4	34.3	43.6	38.1	66.7	69.9	97.6	76.1	50.1	<b>52.5</b>
<b>Monarch</b>	-	-	-	-	-	-	-	-	-	-	0	41.7	<b>20.8</b>
<b>Pere Marquette</b>	9.2	42.0	43.8	44.9	29.8	33.7	6.5	29.2	65.9	89.9	83.8	32.6	<b>42.6</b>
<b>St. Charles</b>	6.4	6.9	16.3	16.6	7.9	10.1	12.4	15.8	19.8	31.6	11.1	19.2	<b>14.5</b>
<b>Warrenville</b>	24.8	57.6	49.6	123.9	53.4	75.9	116.1	120.5	82.6	52.5	41.2	62.0	<b>71.7</b>
<b>IDJJ Average</b>	<b>30.2</b>	<b>33.4</b>	<b>34.8</b>	<b>39.5</b>	<b>28.7</b>	<b>39.2</b>	<b>39.8</b>	<b>55.6</b>	<b>57.6</b>	<b>60.5</b>	<b>50.2</b>	<b>39.1</b>	<b>42.4</b>

Table 22a: Number of Youth on Youth Assaults

	1/25	2/25	3/25	4/25	5/25	6/25	7/25	8/25	9/25	10/25	11/25	12/25
<b>Chicago</b>	0	3	1	0	1	2	3	4	5	4	3	1
<b>Harrisburg</b>	12	7	9	9	4	7	9	15	17	24	14	16
<b>Monarch</b>	-	-	-	-	-	-	-	-	-	-	0	0
<b>Pere Marquette</b>	0	1	3	3	1	0	1	2	3	7	3	4
<b>St. Charles</b>	0	0	1	0	2	0	1	1	0	0	2	1
<b>Warrenville</b>	2	3	0	5	4	1	4	11	9	8	4	7
<b>IDJJ Total</b>	<b>14</b>	<b>14</b>	<b>14</b>	<b>17</b>	<b>12</b>	<b>10</b>	<b>18</b>	<b>33</b>	<b>34</b>	<b>43</b>	<b>26</b>	<b>29</b>

Table 22b: Rate of Youth on Youth Assaults per 100 Youth

	1/25	2/25	3/25	4/25	5/25	6/25	7/25	8/25	9/25	10/25	11/25	12/25	Avg.
<b>Chicago</b>	0	6.7	2.4	0	2.2	4.3	6.5	7.9	9.5	8.2	5.8	2.0	<b>4.6</b>
<b>Harrisburg</b>	20.9	11.5	13.6	13.9	6.9	12.2	14.9	24.4	24.3	36.0	22.7	27.6	<b>19.1</b>
<b>Monarch</b>	-	-	-	-	-	-	-	-	-	-	0	0	<b>0</b>
<b>Pere Marquette</b>	0	7.0	18.8	19.2	6.0	0	6.5	11.7	16.5	39.3	15.7	21.7	<b>13.5</b>
<b>St. Charles</b>	0	0	3.3	0	5.2	0	2.1	2.3	0	0	5.6	2.7	<b>1.8</b>
<b>Warrenville</b>	6.2	10.8	0	22.1	15.3	3.3	12.9	28.2	20.1	18.3	9.7	18.9	<b>13.8</b>
<b>IDJJ Average</b>	<b>8.0</b>	<b>7.9</b>	<b>7.7</b>	<b>9.5</b>	<b>6.5</b>	<b>5.2</b>	<b>9.0</b>	<b>15.6</b>	<b>15.1</b>	<b>20.3</b>	<b>12.3</b>	<b>14.0</b>	<b>10.9</b>

Table 23a: Number of Youth Fights

	1/25	2/25	3/25	4/25	5/25	6/25	7/25	8/25	9/25	10/25	11/25	12/25
<b>Chicago</b>	6	8	7	9	8	12	9	11	16	6	10	8
<b>Harrisburg</b>	12	14	9	7	11	13	10	24	25	33	29	10
<b>Monarch</b>	-	-	-	-	-	-	-	-	-	-	0	3
<b>Pere Marquette</b>	1	3	2	3	2	5	0	0	4	4	8	1
<b>St. Charles</b>	0	2	3	6	1	3	4	4	7	10	1	4
<b>Warrenville</b>	5	4	3	13	9	15	15	22	18	12	8	11
<b>IDJJ Total</b>	<b>24</b>	<b>31</b>	<b>24</b>	<b>38</b>	<b>31</b>	<b>48</b>	<b>38</b>	<b>61</b>	<b>70</b>	<b>65</b>	<b>56</b>	<b>37</b>

Table 23b: Rate of Youth Fights per 100 Youth

	1/25	2/25	3/25	4/25	5/25	6/25	7/25	8/25	9/25	10/25	11/25	12/25	Avg.
<b>Chicago</b>	13.8	17.8	16.6	22.1	17.6	25.8	19.5	21.8	30.5	12.3	19.2	15.9	<b>19.4</b>
<b>Harrisburg</b>	20.9	22.9	13.6	10.8	18.9	22.6	16.6	39.0	35.7	49.5	46.9	17.3	<b>26.2</b>
<b>Monarch</b>	-	-	-	-	-	-	-	-	-	-	0	41.7	<b>20.8</b>
<b>Pere Marquette</b>	9.2	21.0	12.5	19.2	11.9	28.1	0	0	22.0	22.5	41.9	5.4	<b>16.1</b>
<b>St. Charles</b>	0	6.9	9.8	16.6	2.6	7.6	8.3	9.0	17.3	28.7	2.8	11.0	<b>10.0</b>
<b>Warrenville</b>	15.5	14.4	11.5	57.5	34.4	49.5	48.4	56.4	40.2	27.4	19.4	29.6	<b>33.7</b>
<b>IDJJ Average</b>	<b>13.7</b>	<b>17.5</b>	<b>13.3</b>	<b>21.1</b>	<b>16.8</b>	<b>25.1</b>	<b>18.9</b>	<b>28.7</b>	<b>31.0</b>	<b>30.7</b>	<b>26.5</b>	<b>17.9</b>	<b>21.8</b>

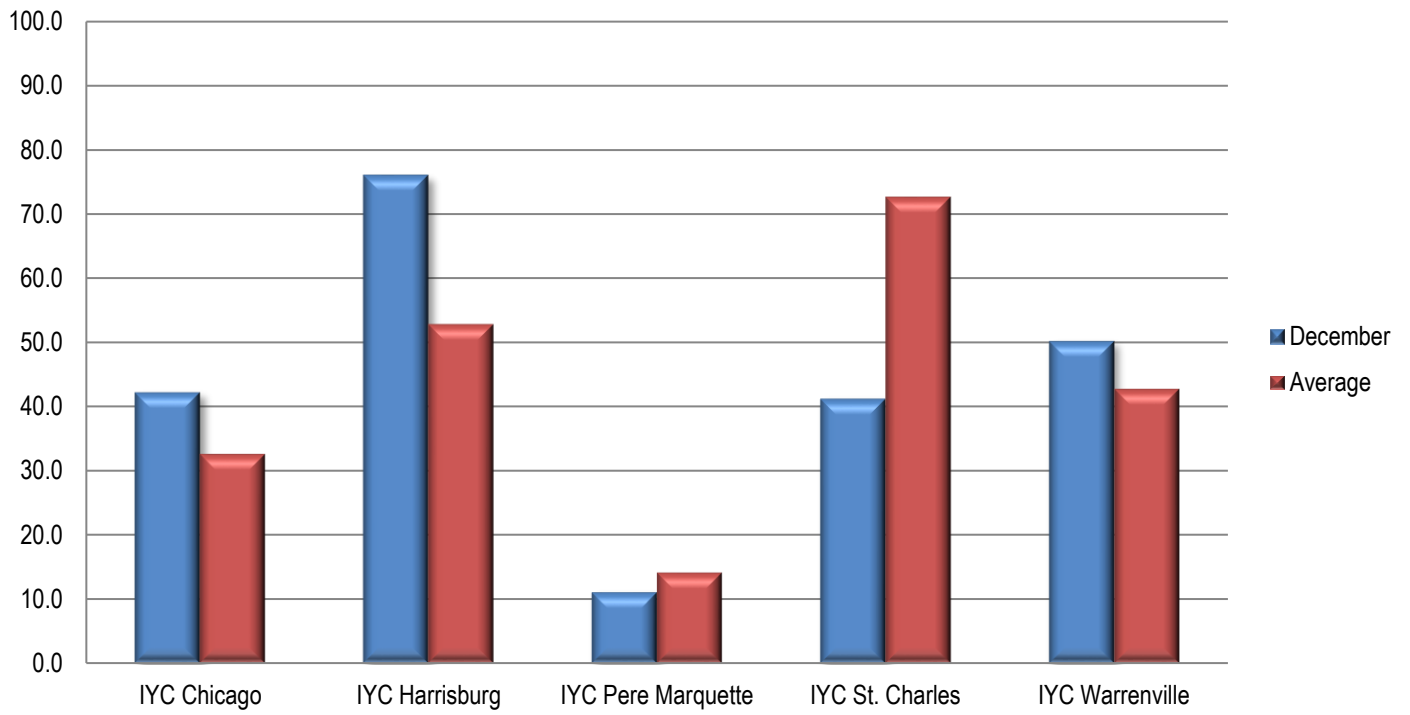
Table 24a: Number of Youth on Staff Assaults

	1/25	2/25	3/25	4/25	5/25	6/25	7/25	8/25	9/25	10/25	11/25	12/25
<b>Chicago</b>	5	2	7	2	2	3	2	3	3	3	9	4
<b>Harrisburg</b>	7	1	5	3	5	5	4	2	7	8	4	3
<b>Monarch</b>	-	-	-	-	-	-	-	-	-	-	0	0
<b>Pere Marquette</b>	0	2	2	1	2	1	0	3	5	5	5	1
<b>St. Charles</b>	2	0	1	0	0	1	1	2	1	1	1	2
<b>Warrenville</b>	1	9	10	10	1	7	17	14	10	3	5	5
<b>IDJJ Total</b>	<b>15</b>	<b>14</b>	<b>25</b>	<b>16</b>	<b>10</b>	<b>17</b>	<b>24</b>	<b>24</b>	<b>26</b>	<b>20</b>	<b>24</b>	<b>15</b>

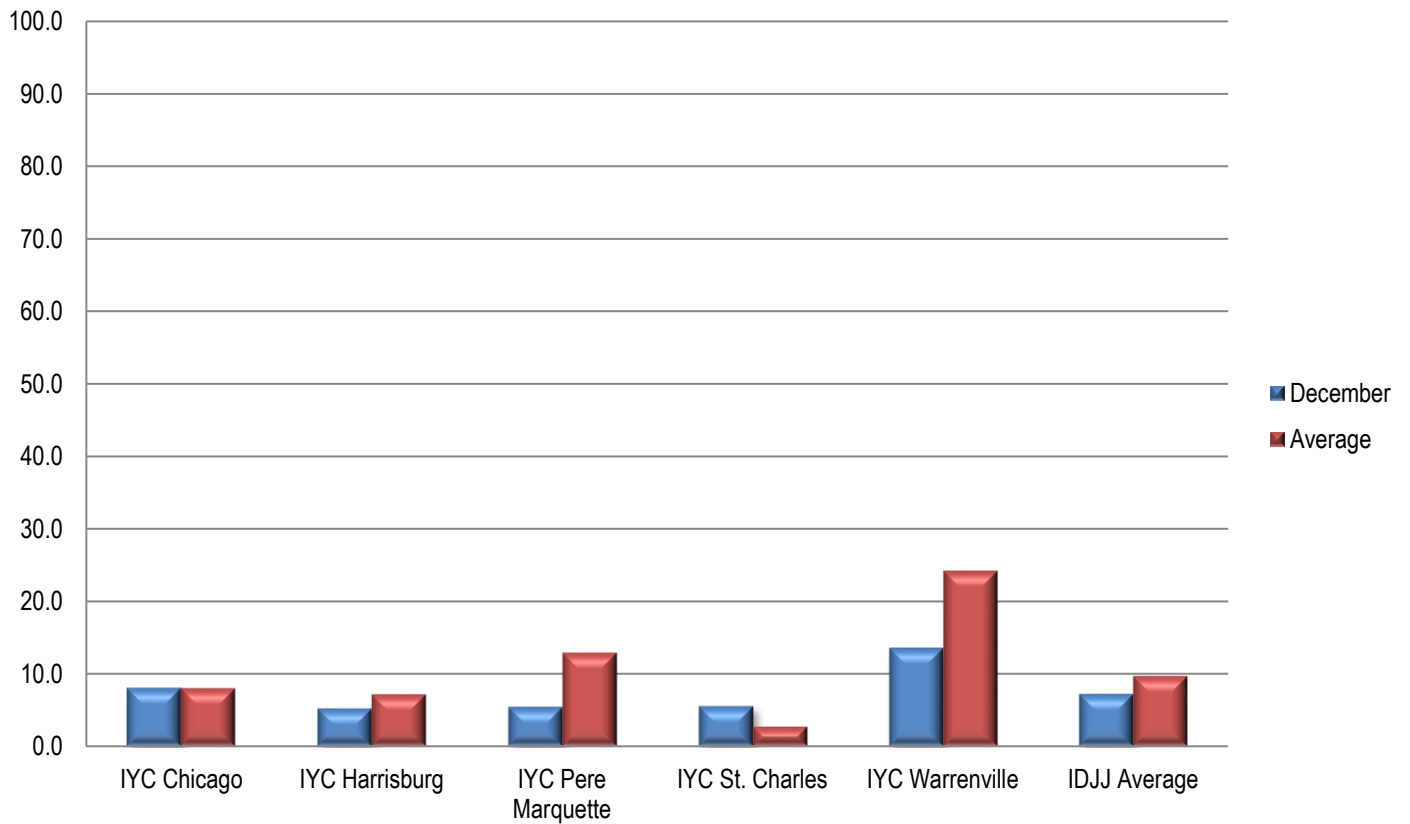
Table 24b: Rate of Youth on Staff Assaults per 100 Youth

	1/25	2/25	3/25	4/25	5/25	6/25	7/25	8/25	9/25	10/25	11/25	12/25	Avg.
<b>Chicago</b>	11.5	4.4	16.6	4.9	4.4	6.5	4.3	6.0	5.7	6.2	17.3	8.0	<b>8.0</b>
<b>Harrisburg</b>	12.2	1.6	7.6	4.6	8.6	8.7	6.6	3.3	10.0	12.0	6.5	5.2	<b>7.2</b>
<b>Monarch</b>	-	-	-	-	-	-	-	-	-	-	0	0	<b>0</b>
<b>Pere Marquette</b>	0	14.0	12.5	6.4	11.9	5.6	0	17.5	27.5	28.1	26.2	5.4	<b>12.9</b>
<b>St. Charles</b>	6.4	0	3.3	0	0	2.5	2.1	4.5	2.5	2.9	2.8	5.5	<b>2.7</b>
<b>Warrenville</b>	3.1	32.4	38.2	44.2	3.8	23.1	54.8	35.9	22.3	6.8	12.1	13.5	<b>24.2</b>
<b>IDJJ Average</b>	<b>8.5</b>	<b>7.9</b>	<b>13.8</b>	<b>8.9</b>	<b>5.4</b>	<b>8.9</b>	<b>11.9</b>	<b>11.3</b>	<b>11.5</b>	<b>9.4</b>	<b>11.4</b>	<b>7.2</b>	<b>9.7</b>

**Chart 9: Rate of Reportable Incidents Per 100 Youth**



**Chart 10: Rate of Youth on Staff Assault Per 100 Youth**



## Section 6: Indicator Data

Table 25: Uses of Chemical Restraints

	1/25	2/25	3/25	4/25	5/25	6/25	7/25	8/25	9/25	10/25	11/25	12/25
<b>Chicago</b>	0	2	0	0	0	1	1	3	3	1	1	0
<b>Harrisburg</b>	1	0	0	2	1	0	1	1	0	1	1	0
<b>Monarch</b>	-	-	-	-	-	-	-	-	-	-	0	0
<b>Pere Marquette</b>	0	0	0	0	0	0	0	0	1	0	0	0
<b>St. Charles</b>	0	0	2	2	2	2	2	4	3	1	1	2
<b>Warrenville</b>	1	1	3	7	0	0	3	4	1	1	0	2
<b>IDJJ Total</b>	<b>2</b>	<b>3</b>	<b>5</b>	<b>11</b>	<b>3</b>	<b>3</b>	<b>7</b>	<b>12</b>	<b>8</b>	<b>4</b>	<b>3</b>	<b>4</b>

Table 26: Uses of Mechanical Restraints

	1/25	2/25	3/25	4/25	5/25	6/25	7/25	8/25	9/25	10/25	11/25	12/25
<b>Chicago</b>	5	5	6	1	3	3	2	1	3	3	4	3
<b>Harrisburg</b>	8	9	5	9	6	4	6	6	8	14	9	5
<b>Monarch</b>	-	-	-	-	-	-	-	-	-	-	0	0
<b>Pere Marquette</b>	0	0	1	3	4	2	0	1	5	2	3	0
<b>St. Charles</b>	0	0	1	2	0	1	0	2	4	3	1	2
<b>Warrenville</b>	9	9	9	10	9	2	6	14	12	5	6	6
<b>IDJJ Total</b>	<b>22</b>	<b>23</b>	<b>22</b>	<b>25</b>	<b>22</b>	<b>12</b>	<b>14</b>	<b>24</b>	<b>32</b>	<b>27</b>	<b>23</b>	<b>16</b>

Uses of chemical and mechanical restraints have varied throughout the year, although the use in the current year is much lower than years past. More important than how frequent they are is whether they are used according to policy and for appropriate reasons.

## Section 7: Confinement Information

Table 28a: Use of Behavioral Holds

	1/25	2/25	3/25	4/25	5/25	6/25	7/25	8/25	9/25	10/25	11/25	12/25
<b>Chicago</b>	9	7	12	7	16	14	12	20	31	26	25	8
<b>Harrisburg</b>	76	45	29	52	39	58	44	72	97	115	77	49
<b>Monarch</b>	-	-	-	-	-	-	-	-	-	-	0	2
<b>Pere Marquette</b>	2	5	1	4	1	4	1	13	15	19	13	1
<b>St. Charles</b>	4	0	10	16	4	21	31	51	18	16	13	13
<b>Warrenville</b>	33	36	26	66	53	66	66	119	68	43	37	62
<b>IDJJ Total</b>	<b>124</b>	<b>93</b>	<b>78</b>	<b>145</b>	<b>113</b>	<b>163</b>	<b>154</b>	<b>275</b>	<b>229</b>	<b>219</b>	<b>165</b>	<b>135</b>

Table 28b: Rate of Behavioral Hold

	1/25	2/25	3/25	4/25	5/25	6/25	7/25	8/25	9/25	10/25	11/25	12/25
<b>Chicago</b>	21	16	28	17	35	30	26	40	59	53	48	16
<b>Harrisburg</b>	132	74	44	80	67	101	73	117	138	173	125	85
<b>Monarch</b>	-	-	-	-	-	-	-	-	-	-	0	28
<b>Pere Marquette</b>	18	35	6	26	6	22	6	76	82	107	68	5
<b>St. Charles</b>	13	0	33	44	10	53	64	115	45	46	36	36
<b>Warrenville</b>	102	129	99	292	202	218	213	305	152	98	90	167
<b>IDJJ Average</b>	<b>71</b>	<b>53</b>	<b>43</b>	<b>81</b>	<b>61</b>	<b>85</b>	<b>77</b>	<b>129</b>	<b>102</b>	<b>103</b>	<b>78</b>	<b>65</b>

Table 28c: Average Length of Behavioral Hold

	1/25	2/25	3/25	4/25	5/25	6/25	7/25	8/25	9/25	10/25	11/25	12/25
<b>Chicago</b>	175	80	254	92	145	98	137	196	91	103	69	135
<b>Harrisburg</b>	155	131	107	147	128	128	132	144	148	181	193	143
<b>Monarch</b>	-	-	-	-	-	-	-	-	-	-	-	117
<b>Pere Marquette</b>	16	70	49	41	41	85	10	135	85	130	79	68
<b>St. Charles</b>	120	-	246	138	95	529	64	203	71	93	93	151
<b>Warrenville</b>	95	112	83	114	69	76	87	67	70	89	99	82
<b>IDJJ Average</b>	<b>137</b>	<b>117</b>	<b>139</b>	<b>126</b>	<b>101</b>	<b>155</b>	<b>98</b>	<b>125</b>	<b>107</b>	<b>143</b>	<b>136</b>	<b>116</b>

Table 29: Use of Crisis Care

	1/25	2/25	3/25	4/25	5/25	6/25	7/25	8/25	9/25	10/25	11/25	12/25
<b>Chicago</b>	-	-	-	-	-	-	-	-	16	14	1	-
<b>Harrisburg</b>	-	-	-	-	-	-	-	-	-	-	-	-
<b>Monarch</b>	-	-	-	-	-	-	-	-	-	-	-	-
<b>Pere Marquette</b>	-	-	-	-	-	-	-	1	1	-	-	3
<b>St. Charles</b>	-	-	-	-	-	-	1	7	-	-	1	1
<b>Warrenville</b>	2	1	1	2	-	-	-	-	1	1	-	1
<b>IDJJ Total</b>	<b>2</b>	<b>1</b>	<b>1</b>	<b>2</b>	<b>0</b>	<b>0</b>	<b>1</b>	<b>8</b>	<b>18</b>	<b>15</b>	<b>2</b>	<b>5</b>

Table 30: Use of Medical Hold

	1/25	2/25	3/25	4/25	5/25	6/25	7/25	8/25	9/25	10/25	11/25	12/25
<i>Chicago</i>	-	-	-	-	-	-	-	-	-	-	1	-
<i>Harrisburg</i>	-	-	-	-	-	-	-	-	-	-	-	-
<i>Monarch</i>	-	-	-	-	-	-	-	-	-	-	-	-
<i>Pere Marquette</i>	-	-	-	-	1	-	-	-	-	-	-	-
<i>St. Charles</i>	-	-	-	-	-	1	-	-	-	1	-	-
<i>Warrenville</i>	-	1	-	2	-	-	-	-	-	-	-	-
<b>IDJJ Average</b>	<b>0</b>	<b>1</b>	<b>0</b>	<b>2</b>	<b>1</b>	<b>1</b>	<b>0</b>	<b>0</b>	<b>0</b>	<b>1</b>	<b>1</b>	<b>0</b>

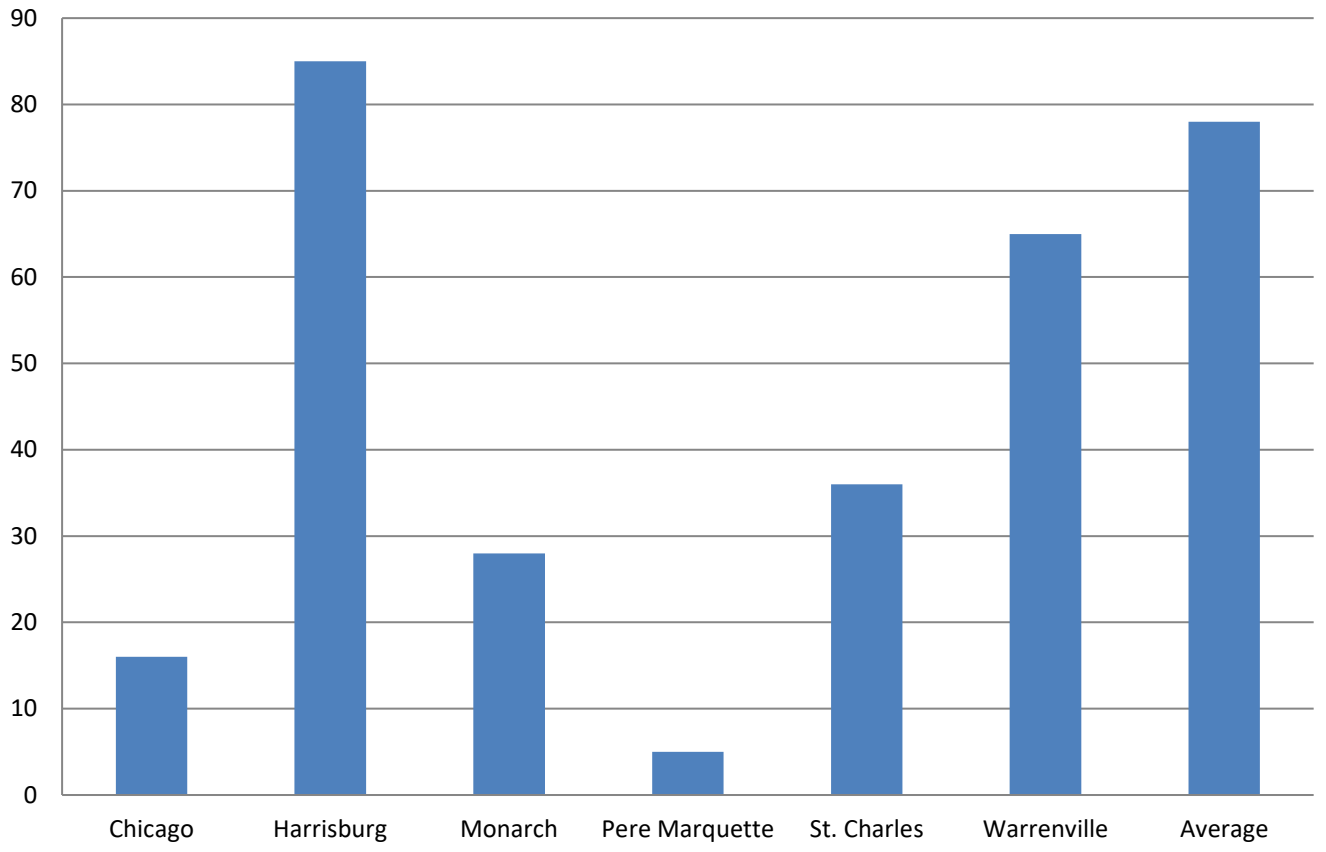
Table 31: Use of Administrative Hold

	1/25	2/25	3/25	4/25	5/25	6/25	7/25	8/25	9/25	10/25	11/25	12/25
<i>Chicago</i>	29	55	47	42	12	10	11	8	-	-	-	-
<i>Harrisburg</i>	11	-	-	-	-	1	-	2	84	57	-	1
<i>Monarch</i>	-	-	-	-	-	-	-	-	-	-	-	-
<i>Pere Marquette</i>	-	-	-	-	-	-	-	-	-	-	-	-
<i>St. Charles</i>	-	15	-	-	-	21	24	7	13	-	-	8
<i>Warrenville</i>	165	1	-	38	57	28	141	120	42	-	32	312
<b>IDJJ Total</b>	<b>205</b>	<b>71</b>	<b>47</b>	<b>80</b>	<b>69</b>	<b>60</b>	<b>176</b>	<b>137</b>	<b>139</b>	<b>57</b>	<b>32</b>	<b>321</b>

Table 32: Use of Investigative Status

	1/25	2/25	3/25	4/25	5/25	6/25	7/25	8/25	9/25	10/25	11/25	12/25
<i>Chicago</i>	-	1	-	-	1	-	-	2	2	-	-	-
<i>Harrisburg</i>	1	-	-	1	2	-	-	-	-	-	-	-
<i>Monarch</i>	-	-	-	-	-	-	-	-	-	-	-	-
<i>Pere Marquette</i>	-	-	-	-	-	-	-	-	-	-	-	-
<i>St. Charles</i>	-	-	-	-	-	-	-	-	-	1	-	-
<i>Warrenville</i>	1	-	-	-	-	-	-	-	-	-	-	-
<b>IDJJ Total</b>	<b>2</b>	<b>1</b>	<b>0</b>	<b>1</b>	<b>3</b>	<b>0</b>	<b>0</b>	<b>2</b>	<b>2</b>	<b>1</b>	<b>0</b>	<b>0</b>

**Chart 12: Rate per 100 youth of Behavioral Holds**



## Section 8: Aftercare Data

Table 33: Youth Monitored by Aftercare

	1/25	2/25	3/25	4/25	5/25	6/25	7/25	8/25	9/25	10/25	11/25	12/25
<b>Total Number of Youth Assigned to Aftercare</b>	401	383	384	402	419	407	415	429	421	423	422	436
<b>Youth in Community</b>	197	188	192	186	202	197	204	190	183	193	191	207
<b>Youth in Facilities</b>	123	116	118	129	132	127	131	157	153	141	141	136
<b>Youth with Pending Criminal Cases</b>	71	68	63	64	65	70	69	72	71	75	77	81
<b>Youth with Warrants and Out of State</b>	10	11	11	23	20	13	11	10	14	14	13	12

Table 34: Caseloads in Aftercare (Average per Specialist)

	1/25	2/25	3/25	4/25	5/25	6/25	7/25	8/25	9/25	10/25	11/25	12/25
<b>Youth Assigned to Specialist</b>	8.0	7.6	7.8	8.8	9.3	9	9.3	9.6	9.3	9.3	9.2	9.5
<b>Youth in Community</b>	4.9	4.7	4.8	5.2	5.6	5.5	5.7	5.3	5.1	5.4	5.3	5.8
<b>Youth in Facilities</b>	3.1	3.0	3.0	3.6	3.7	3.5	3.6	4.3	4.2	3.9	3.9	3.7

Table 35: Average Specialist Caseload by Aftercare Office – December 2025

	Number of Specialists	Number of Youth	Average Caseload	Number of Youth in Community	Average Caseload in Community
<b>Chicago</b>	6	70	11.7	36	6
<b>Chicago Heights</b>	4	45	11.3	31	7.8
<b>Aurora</b>	3	28	9.3	17	5.7
<b>Rockford</b>	4	30	7.5	17	4.3
<b>Peoria</b>	4	27	6.8	16	4
<b>Belleville</b>	5	42	8.4	25	5
<b>Champaign</b>	3	22	7.3	16	5.3
<b>Springfield</b>	2	30	15	21	10.5
<b>Placement</b>	5	49	9.8	28	5.6
<b>IDJJ Total</b>	<b>36</b>	<b>343</b>	<b>9.5</b>	<b>207</b>	<b>5.8</b>

Table 36: Specialist Contact with Youth by Aftercare Office – December 2025

	Number of Overall Contacts	Contacts per Youth	Contacts with Youth in Community	Contacts per Youth in Community
<b>Chicago</b>	110	1.6	90	2.5
<b>Chicago Heights</b>	92	2.0	69	2.2
<b>Aurora</b>	72	2.6	56	3.3
<b>Rockford</b>	113	3.8	81	4.8
<b>Peoria</b>	128	4.7	88	5.5
<b>Belleville</b>	142	3.4	116	4.6
<b>Champaign</b>	110	5	85	5.3
<b>Springfield</b>	71	2.4	57	2.7
<b>Placement</b>	135	2.8	113	4.0
<b>IDJJ Total</b>	<b>973</b>	<b>2.8</b>	<b>755</b>	<b>3.6</b>

Table 37a: Parole Revocations

	Parole Revocations Heard	Revocations Approved	Revocations Denied	Hearings Continued
<i>January</i>	5	3	2	0
<i>February</i>	4	4	0	0
<i>March</i>	10	6	4	0
<i>April</i>	8	4	4	0
<i>May</i>	7	4	3	0
<i>June</i>	5	5	0	0
<i>July</i>	3	1	2	0
<i>August</i>	11	11	0	0
<i>September</i>	7	3	4	0
<i>October</i>	11	6	5	0
<i>November</i>	7	6	1	0
<i>December</i>	6	4	2	0
<b>IDJJ Average</b>	<b>7</b>	<b>4.8</b>	<b>2.3</b>	<b>0</b>

Table 37b: Parole Revocation Rates

	Percent of Revocations Approved	Percent of Revocations Denied	Percent of Hearings Continued
<i>January</i>	60%	40%	0%
<i>February</i>	100%	0%	0%
<i>March</i>	60%	40%	0%
<i>April</i>	50%	50%	0%
<i>May</i>	57.1%	42.9%	0%
<i>June</i>	100%	0%	0%
<i>July</i>	33.3%	66.7%	0%
<i>August</i>	100%	0%	0%
<i>September</i>	42.9%	57.1%	0%
<i>October</i>	54.5%	45.5%	0%
<i>November</i>	85.7%	14.3%	0%
<i>December</i>	66.7%	33.3%	0%
<b>IDJJ Average</b>	<b>67.5%</b>	<b>32.5%</b>	<b>0%</b>

With lower numbers of admission for technical parole violators, the numbers of parole revocation hearings held monthly has greatly decreased compared to previous years.

**Section 9: Population Stock/Flow**

Table 38: Institutional Stock/Flow

	1/25	2/25	3/25	4/25	5/25	6/25	7/25	8/25	9/25	10/25	11/25	12/25
<b>Number of Admissions per Month</b>	27	26	34	31	37	30	49	37	35	31	33	32
<b>Percent of Admissions Parole Violators</b>	18.5%	19.2%	23.5%	22.6%	8.1%	6.7%	6.1%	18.9%	20%	6.5%	18.2%	15.6%
<b>Number of Facility Exits per Month</b>	24	26	33	28	33	28	34	23	34	44	29	38
<b>Percent of Exits to Aftercare Supervision</b>	91.7%	100%	90.9%	92.8%	90.9%	96.4%	91.2%	82.6%	91.2%	90.9%	93.1%	89.5%

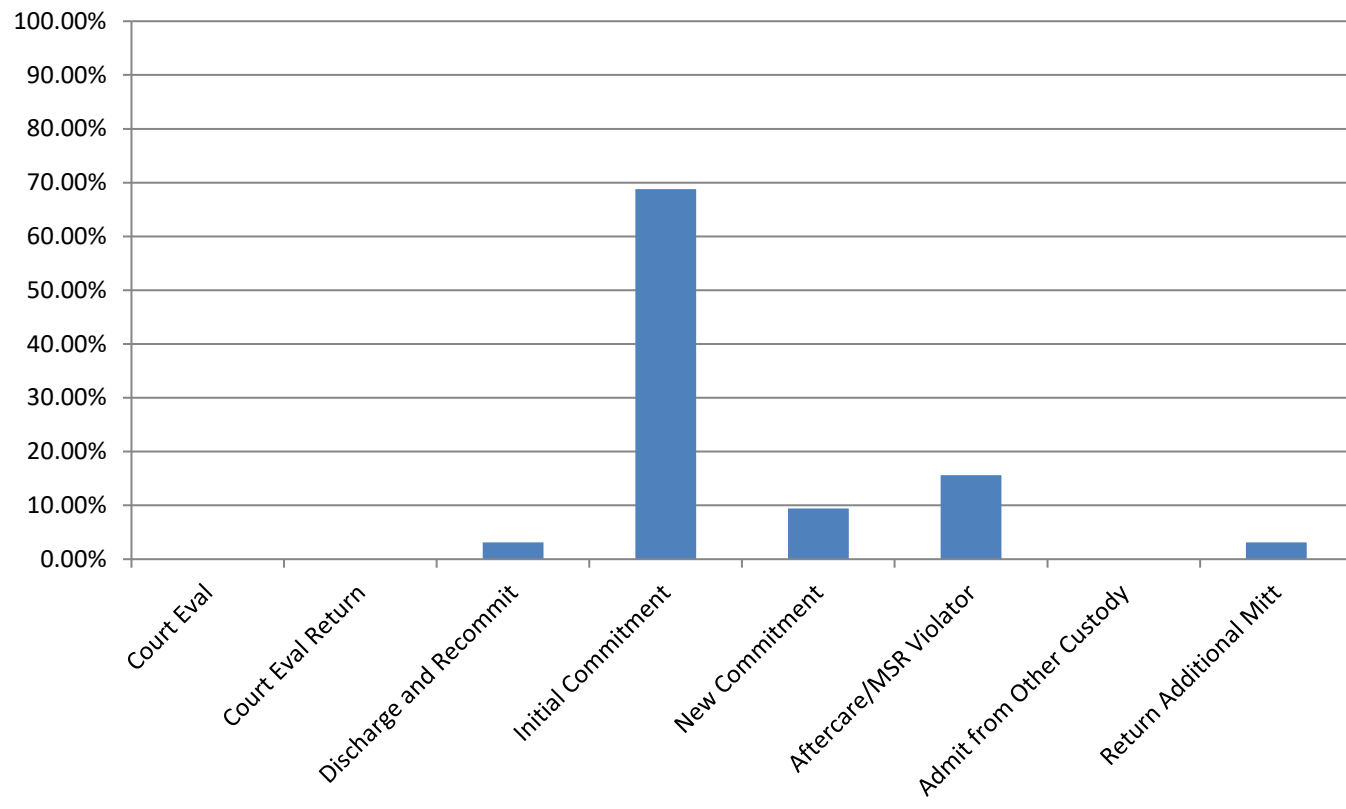
Table 39: Aftercare Stock/Flow

	1/25	2/25	3/25	4/25	5/25	6/25	7/25	8/25	9/25	10/25	11/25	12/25
<b>Number of New Supervised Youth</b>	22	26	31	28	31	27	33	19	31	40	27	35
<b>Number of Discharges from Aftercare</b>	23	22	16	18	12	20	20	18	24	17	20	8

Table 40: Admissions to Facilities by Type

	<b>December 2025</b>	
	Number	Percent
<b>Court Evaluation</b>	0	0
<b>Court Evaluation Return</b>	0	0
<b>Discharged and Recommitted</b>	1	3.1%
<b>Initial Commitment</b>	22	68.8%
<b>New Commitment</b>	3	9.4%
<b>Aftercare/MSR Violator</b>	5	15.6%
<b>Admit from Other Custody</b>	0	0%
<b>Return Additional Mitt</b>	1	3.1%
<b>Total</b>	<b>32</b>	

**Chart 13: Admission Types to Facility, December 2025**



**Section 10: TRD Data for December 2025**

Table 41: Adjustments by Facility

	Reductions	Extensions
<b>Chicago</b>	171	108
<b>Harrisburg</b>	95	38
<b>Monarch</b>	0	0
<b>Pere Marquette</b>	43	9
<b>St. Charles</b>	100	7
<b>Warrenville</b>	61	8
<b>Total</b>	<b>470</b>	<b>170</b>

Table 42: Types of Adjustments Used

	CHI	HRG	MON	PER	STC	WRV	DJJ Overall
<i>BARJ Reduction</i>	0	0	0	0	1	0	1
<i>Delinquent Program Reduction</i>	0	2	0	2	0	0	4
<i>Ed/Voc Reduction</i>	13	1	0	26	39	0	79
<i>Grade Level Reduction</i>	6	3	0	0	2	5	16
<i>JSO Completion Reduction</i>	0	0	0	0	0	0	0
<i>No Maj. Sanc. Reductions</i>	14	12	0	2	9	12	49
<i>Other Tx Reduction</i>	0	3	0	2	3	0	8
<i>SA Completion Reduction</i>	26	3	0	0	4	11	44
<i>YASI Goal Reduction</i>	112	71	0	11	42	33	269
<i>Discipline Extension</i>	108	38	0	9	7	8	170

7

**Chart 14: Types of Adjustments used by Agency**

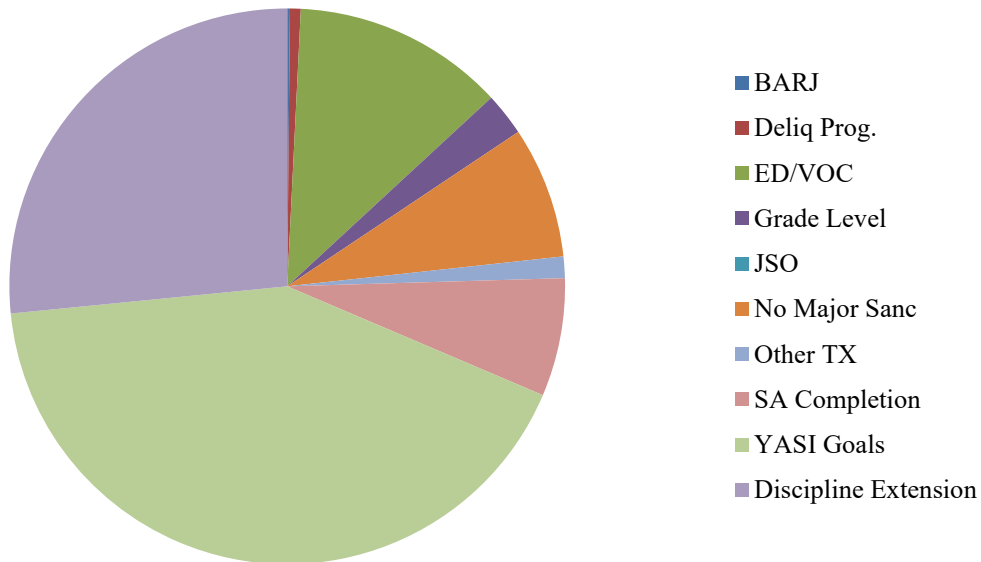


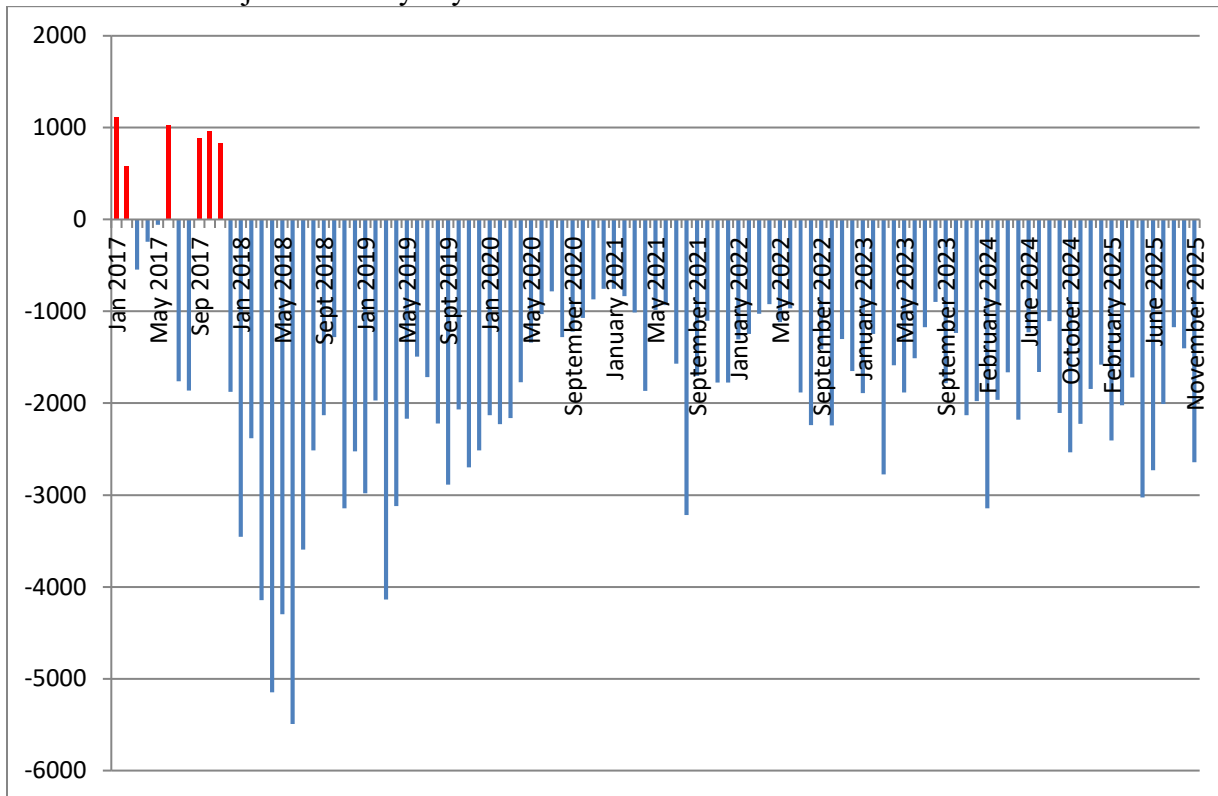
Table 45: Frequency of Discipline Extensions

	1/25	2/25	3/25	4/25	5/25	6/25	7/25	8/25	9/25	10/25	11/25	12/25
<b>Chicago</b>	33	18	44	29	24	29	48	30	35	16	32	108
<b>Harrisburg</b>	56	25	19	38	18	15	36	37	81	20	25	38
<b>Monarch</b>	-	-	-	-	-	-	-	-	-	-	0	0
<b>Pere Marquette</b>	0	1	2	7	5	11	4	3	8	10	5	9
<b>St. Charles</b>	3	2	1	13	6	0	11	19	31	15	3	7
<b>Warrenville</b>	20	15	5	4	16	4	11	7	42	16	3	8
<b>Total</b>	<b>112</b>	<b>61</b>	<b>71</b>	<b>91</b>	<b>69</b>	<b>59</b>	<b>110</b>	<b>96</b>	<b>197</b>	<b>67</b>	<b>69</b>	<b>170</b>

Table 46: Average Length of Discipline Extension

	1/25	2/25	3/25	4/25	5/25	6/25	7/25	8/25	9/25	10/25	11/25	12/25
<b>Chicago</b>	9	8	16	6	7	9	7	9	11	10	7	9
<b>Harrisburg</b>	14	9	8	13	11	11	13	10	10	9	14	12
<b>Monarch</b>	-	-	-	-	-	-	-	-	-	-	-	-
<b>Pere Marquette</b>	0	5	5	10	12	9	5	9	12	11	11	10
<b>St. Charles</b>	7	6	10	16	10	-	7	18	12	13	4	9
<b>Warrenville</b>	20	11	8	12	13	4	9	2	6	5	3	7
<b>Average</b>	<b>13</b>	<b>9</b>	<b>13</b>	<b>11</b>	<b>10</b>	<b>9</b>	<b>9</b>	<b>10</b>	<b>10</b>	<b>10</b>	<b>10</b>	<b>9</b>

Summed Total Adjustment Days by Month



## Section 11: YASI

Table 47: YASI Pre-Screens: December 2025

	Legal Risk	Social Risk	Protective	Overall Risk
<i>High</i>	56	51	6	59
<i>Moderate</i>	13	17	25	10
<i>Low</i>	0	1	38	0
<b>Total</b>	<b>69</b>	<b>69</b>	<b>69</b>	<b>69</b>

Table 48: YASI Full Assessments: Risk

	Dynamic	Static	Overall
<i>Very High</i>	8	-	-
<i>High</i>	12	69	17
<i>Moderate-High</i>	35	-	-
<i>Moderate</i>	10	0	30
<i>Low-Moderate</i>	3	-	-
<i>Low</i>	1	0	22
<i>None</i>	0	0	0
<b>Total</b>	<b>69</b>	<b>69</b>	<b>69</b>

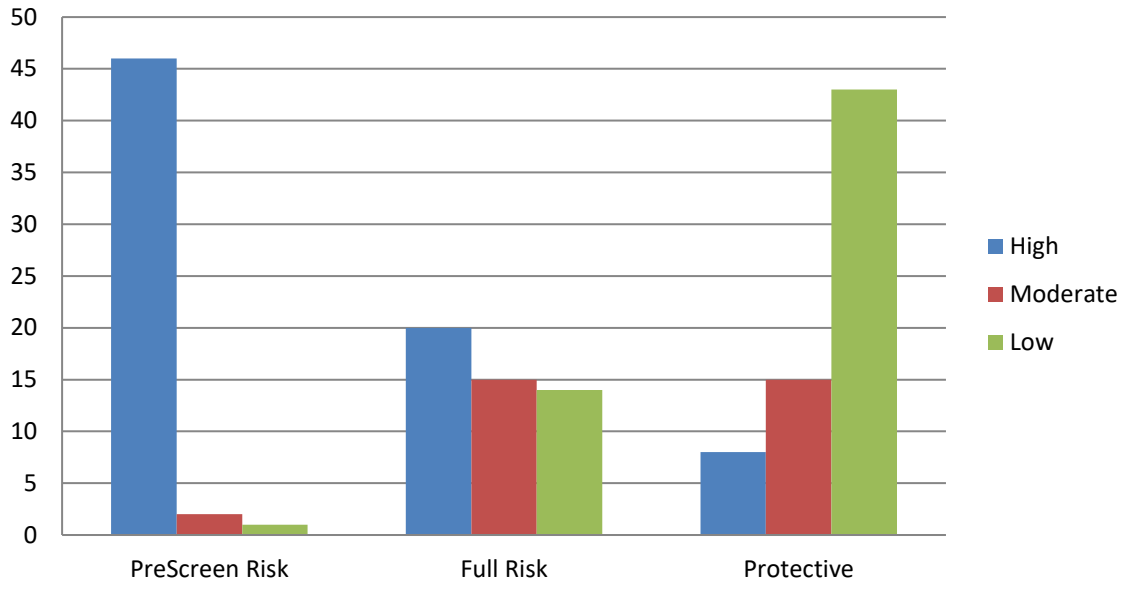
Table 49: YASI Full Assessments: Protective

	Dynamic
<i>Very High</i>	2
<i>High</i>	8
<i>Moderate-High</i>	26
<i>Moderate</i>	17
<i>Low-Moderate</i>	8
<i>Low</i>	8
<i>None</i>	0
<b>Total</b>	<b>69</b>

Table 47: Strength Factors

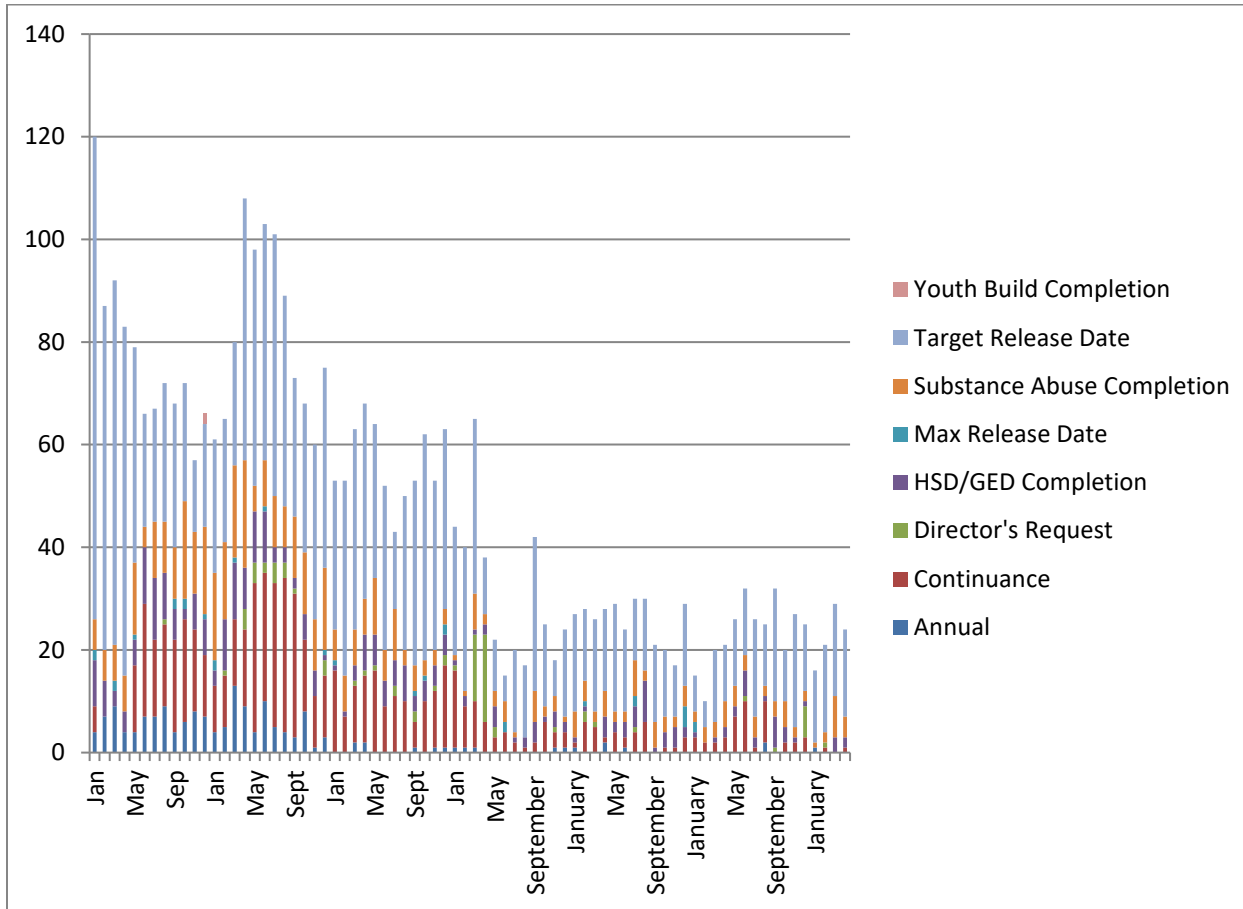
	Family	School	Peer/ Community	Aggression /Violence	Attitudes	Adaptive Skills	Emp/ Free Time
<i>High</i>	2	5	3	2	0	2	27
<i>Moderate</i>	15	25	41	6	13	7	0
<i>Low</i>	48	18	7	3	24	18	36
<i>None</i>	4	21	18	58	32	42	6
<b>Total</b>	<b>69</b>	<b>69</b>	<b>69</b>	<b>69</b>	<b>69</b>	<b>69</b>	<b>69</b>

**Chart 16: Risk and Protective Levels of Youth**



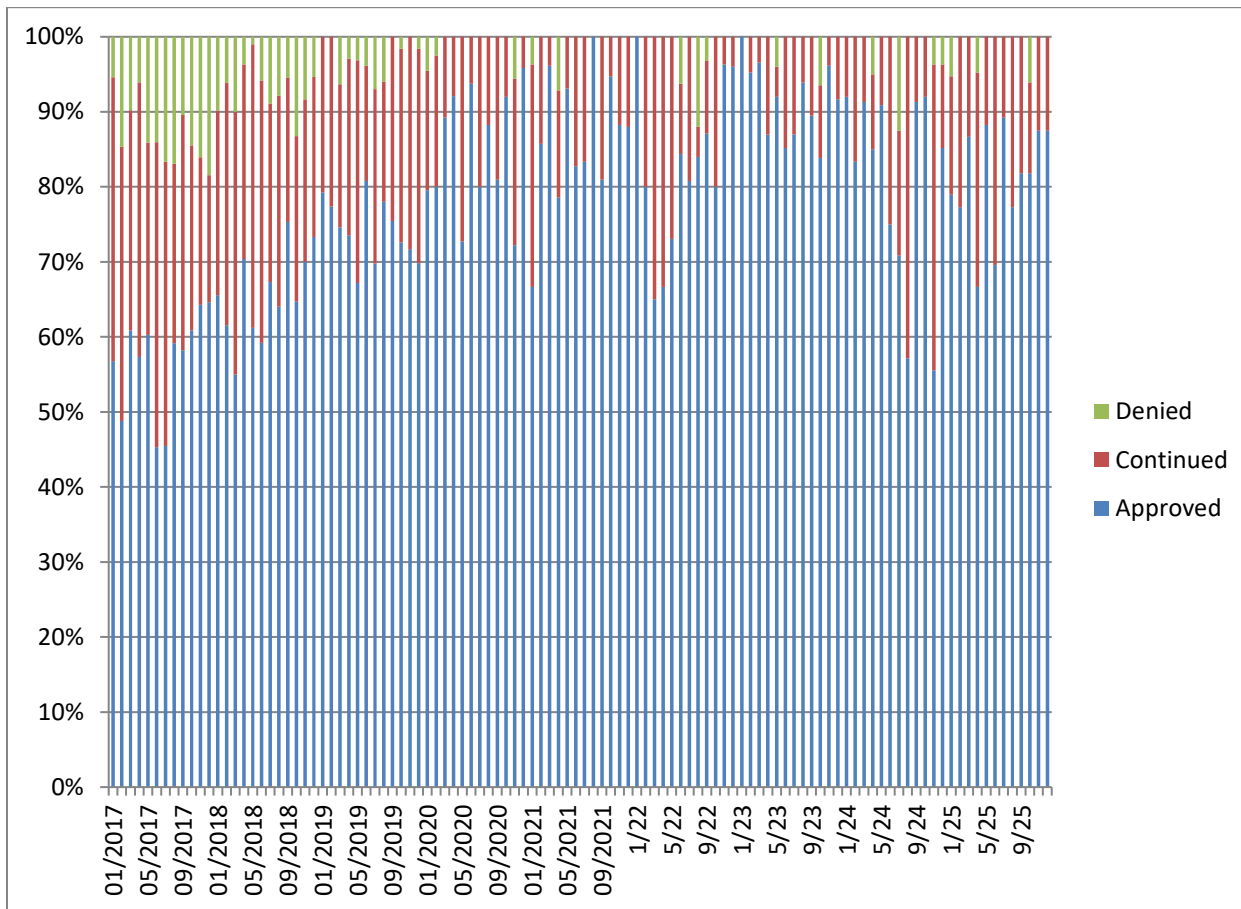
## Release Reviews

Reviews by Type per Month



	Annual	Cont.	Director's Request	HSD/GED	Max Release Date	Substance Abuse	Target Release Date	Total
January	1	3	1	0	0	1	13	<b>19</b>
February	0	8	0	2	0	5	7	<b>22</b>
March	1	1	0	2	0	1	10	<b>15</b>
April	3	1	1	1	0	4	11	<b>21</b>
May	2	4	0	0	0	2	9	<b>17</b>
June	1	3	0	3	0	5	11	<b>23</b>
July	0	7	3	1	0	4	13	<b>28</b>
August	1	4	5	0	0	1	11	<b>22</b>
September	0	6	2	2	0	1	11	<b>22</b>
October	0	2	7	2	0	9	13	<b>33</b>
November	0	4	2	1	0	7	18	<b>32</b>
December	0	7	3	1	0	3	18	<b>32</b>

Percent of Release Reviews by Outcome and Month



## Demographic Profile for December 31st, 2025

Sex	Institutions		Aftercare	
	Number	Percent	Number	Percent
Male	197	95.2%	289	94.8%
Female	10	4.8%	16	5.2%

Age	Institutions		Aftercare	
	Number	Percent	Number	Percent
Average Age	17.8		18.1	
16 & Under	55	26.6%	62	20.4%
17 to 20	149	72.0%	235	77.3%
20.5 & Over	3	1.4%	7	2.3%

Race/Ethnicity	Institutions		Aftercare	
	Number	Percent	Number	Percent
White	38	18.4%	48	15.7%
Black	135	65.2%	213	69.8%
Hispanic	17	8.2%	32	10.5%
Asian	1	0.5%	0	0%
Multi/Biracial	16	7.8%	12	3.9%

Committing Counties <sup>1</sup>	Institutions		Aftercare	
	Number	Percent	Number	Percent
Cook	65	31.4%	130	42.6%
Collar Counties	13	6.3%	24	7.9%
Metro-East	16	7.7%	18	5.9%
Central	73	35.3%	78	25.6%
Southern	12	5.8%	18	5.9%
Northern	28	13.5%	31	10.2%
Out of State	0	0%	6	1.9%

<sup>1</sup> Committing Counties: Cook = Cook; Collar Counties = DuPage, Kane, Lake, McHenry, Will; Metro East Counties = Madison, St. Clair; Central IL Counties = Adams, Bond, Brown, Calhoun, Cass, Champaign, Christian, Clark, Coles, Crawford, Cumberland, Dewitt, Douglas, Edgar, Effingham, Fayette, Ford, Fulton, Greene, Hancock, Henderson, Iroquois, Jasper, Jersey, Knox, Livingston, Logan, McDonough, McLean, Macon, Macoupin, Marshall, Mason, Menard, Montgomery, Morgan, Moultrie, Peoria, Piatt, Pike, Sangamon, Schuyler, Scott, Shelby, Stark, Tazewell, Vermillion Warren, Woodford; South IL Counties = Alexander, Clay, Clinton, Edwards, Franklin, Gallatin, Hamilton, Hardin, Jackson, Jefferson, Johnson, Lawrence, Marion, Massac, Monroe, Perry, Pope, Pulaski, Randolph, Richland, Saline, Union, Wabash, Washington, Wayne, White, Williamson; North, IL Counties = Boone, Bureau, Carroll, DeKalb, Grundy, Henry, Jo-Daviess, Kankakee, Kendall, LaSalle, Lee, Mercer, Ogle, Putnam, Rock Island, Stephenson, Whiteside, Winnebago; Other = Out of State

Offense Class	Institutions		Aftercare	
	Number	Percent	Number	Percent
Murder	33	15.9%	4	1.3%
Class X Felony	58	28.0%	93	30.5%
Class 1 Felony	35	16.9%	57	18.7%
Class 2 Felony	53	25.6%	112	36.7%
Class 3 Felony	18	8.7%	15	4.9%
Class 4 Felony	10	4.8%	18	5.9%

Prefix	Institutions		Aftercare	
	Number	Percent	Number	Percent
Court Evaluation	1	0.5%	2	0.7%
Delinquent	99	47.8%	242	79.3%
Extended Jurisdiction	10	4.8%	18	5.9%
Felon	74	35.7%	6	2.0%
First Degree Murderer	15	7.2%	2	0.7%
Habitual Juvenile	1	0.5%	6	2.0%
Violent Juvenile	7	3.4%	23	7.5%
From Other State	0	0%	6	2.0%

## Aftercare Completion – December 2025

### Characteristics of Youth Exiting Aftercare

*Youth exiting aftercare are youth that are being discharged from IDJJ custody and youth that are entering an IDJJ facility*

Sex	Aftercare Exits	
	Number	Percent
Male	16	88.9%
Female	2	11.1%

Age	Aftercare Exits	
	Number	Percent
Average Age	17.3	
16 & Under	7	38.9%
17 to 20	11	61.1%
20.5 & Over	0	0%

Committing Counties <sup>2</sup>	Aftercare Exits	
	Number	Percent
Cook	6	33.3%
Collar Counties	0	0%
Metro-East	0	0%
Central	9	50%
Southern	1	5.6%
Northern	2	11.1%
Out of State	0	0%

Race/Ethnicity	Aftercare Exits	
	Number	Percent
White	5	27.8%
Black	10	55.6%
Hispanic	2	11.1%
Asian/Pacific Islander	0	0%
Multi/Biracial	1	5.6%

<sup>2</sup> Committing Counties: Cook = Cook; Collar Counties = DuPage, Kane, Lake, McHenry, Will; Metro East Counties = Madison, St. Clair; Central IL Counties = Adams, Bond, Brown, Calhoun, Cass, Champaign, Christian, Clark, Coles, Crawford, Cumberland, Dewitt, Douglas, Edgar, Effingham, Fayette, Ford, Fulton, Greene, Hancock, Henderson, Iroquois, Jasper, Jersey, Knox, Livingston, Logan, McDonough, McLean, Macon, Macoupin, Marshall, Mason, Menard, Montgomery, Morgan, Moultrie, Peoria, Piatt, Pike, Sangamon, Schuyler, Scott, Shelby, Stark, Tazewell, Vermillion Warren, Woodford; South IL Counties = Alexander, Clay, Clinton, Edwards, Franklin, Gallatin, Hamilton, Hardin, Jackson, Jefferson, Johnson, Lawrence, Marion, Massac, Monroe, Perry, Pope, Pulaski, Randolph, Richland, Saline, Union, Wabash, Washington, Wayne, White, Williamson; North, IL Counties = Boone, Bureau, Carroll, DeKalb, Grundy, Henry, Jo-Daviess, Kankakee, Kendall, LaSalle, Lee, Mercer, Ogle, Putnam, Rock Island, Stephenson, Whiteside, Winnebago; Other = Out of State

Offense Class	Aftercare Exits	
	Number	Percent
Murder	0	0%
Class X Felony	1	5.6%
Class 1 Felony	3	16.7%
Class 2 Felony	8	44.4%
Class 3 Felony	4	22.2%
Class 4 Felony	1	5.6%

Prefix	Aftercare Exits	
	Number	Percent
Court Evaluation	0	0%
Delinquent	16	88.9%
Extended Jurisdiction	0	0%
Felon	2	11.1%
First Degree Murderer	0	0%
Habitual Juvenile	0	0%
Violent Juvenile	0	0%
From Other State	0	0%

Discharge Reason	Aftercare Exits	
	Number	Percent
Admitted to Institution	12	66.7%
Aftercare Discharge	5	27.8%
Adult Sentence Discharge	0	0%
Transfer to Adult Parole	0	0%
Court Ordered Discharge	0	0%
Discharged from Illinois Custody	0	0%
Statutory Discharge	0	0%
Death	1	5.6%
Vacated Commitment Order	0	0%
Expiration of Sentence	0	0%

Youth Admitted to Institutions	Aftercare Exits	
	Number	Percent
Technical Violators	5	41.7%
New Commitments	7	58.3%

## Youth Outcomes at Discharge from Aftercare – December 2025

These are youth outcomes are for youth discharging Aftercare

