



**Monthly Report:
November 2024**

FY2025

Section 1: Population and Staffing Data

Table 1a: Population by Facility

	1/24	2/24	3/24	4/24	5/24	6/24	7/24	8/24	9/24	10/24	11/24
Chicago	41	40	37	41	39	41	43	50	51	52	55
Harrisburg	55	56	50	56	49	51	61	49	48	53	51
Pere Marquette	13	12	15	13	13	16	16	18	20	17	12
St. Charles	32	21	29	24	23	32	30	30	31	27	32
Warrenville*	26	28	29	31	33	33	29	31	37	37	38
IDJJ Total	167	157	160	165	157	173	179	178	187	186	188

*Due to fire, the Warrenville Population is being housed at St. Charles.

Table 1b: Average Daily Population by Facility

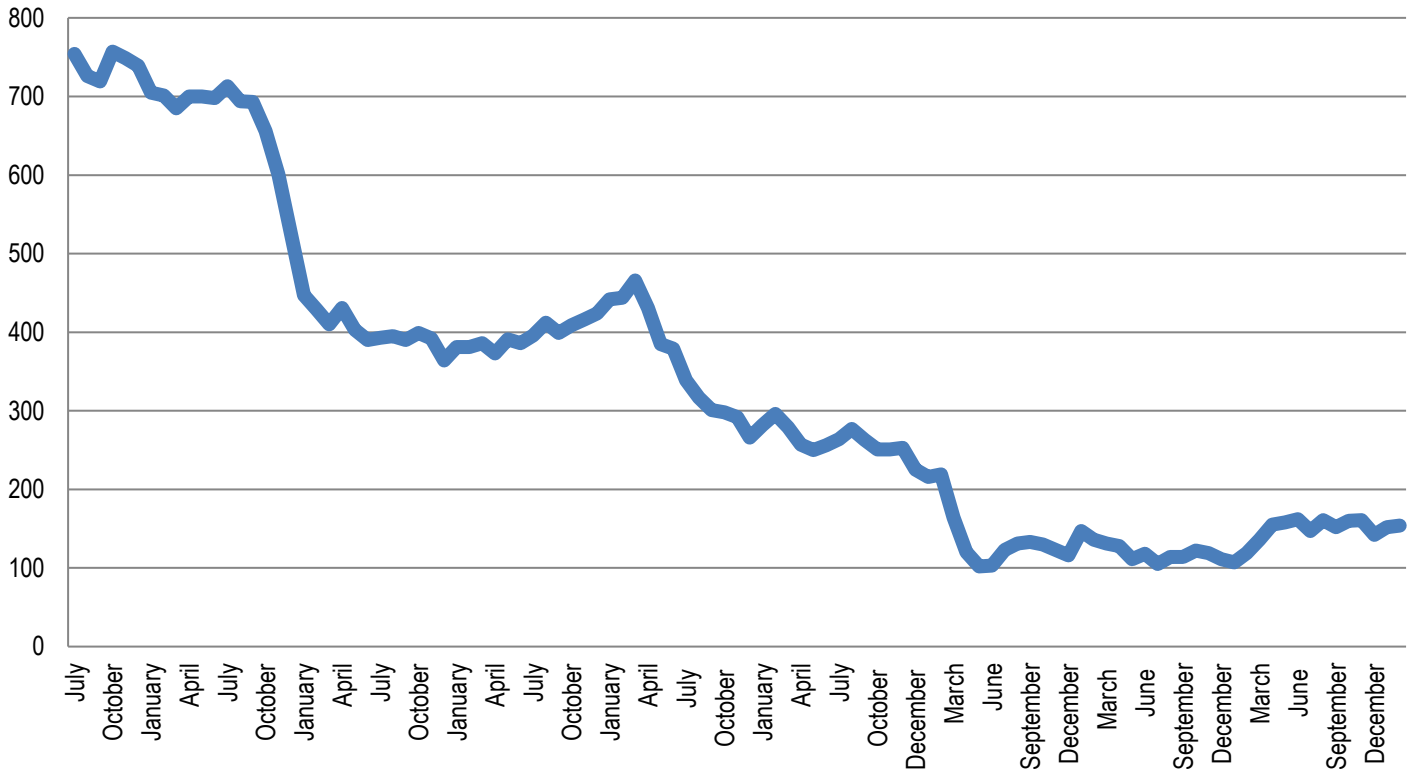
	1/24	2/24	3/24	4/24	5/24	6/24	7/24	8/24	9/24	10/24	11/24
Chicago	39.4	40.7	37.8	42.2	39.8	39.2	42.7	45.2	51.3	51.3	52.3
Harrisburg	56.4	54.1	54.4	54.4	53.6	52.0	55.5	51.1	47.3	50.0	52.2
Pere Marquette	12.3	13.5	13.2	12.8	12.5	14.5	16.2	17.7	18.1	16.8	13.6
St. Charles	35.4	24.6	25.4	24.8	22.2	28.1	43.9	30.2	30.6	30.1	30.4
Warrenville*	23.2	26.8	28.5	28.0	33.9	32.2	41.3	31.6	36.8	37.0	35.1
IDJJ Total	166.6	159.7	159.3	162.2	162.1	166.0	179.7	175.8	184.0	185.3	183.7

*Due to fire, the Warrenville Population is being housed at St. Charles.

Table 2: Security Staff Headcount by Facility

	1/24	2/24	3/24	4/24	5/24	6/24	7/24	8/24	9/24	10/24	11/24
Chicago	70	70	65	65	71	69	69	70	69	67	72
Harrisburg	109	110	110	109	120	120	118	112	111	107	114
Pere Marquette	43	40	41	40	43	42	39	40	39	39	39
St. Charles	67	66	66	64	66	66	60	57	57	56	57
Warrenville	62	60	58	53	57	57	56	59	55	54	56
IDJJ Total	351	346	341	331	357	354	342	338	331	323	338

Chart 1: Facility Populations on Last Day of Month Last Nine Fiscal Years



Section 2: Mental Health Data

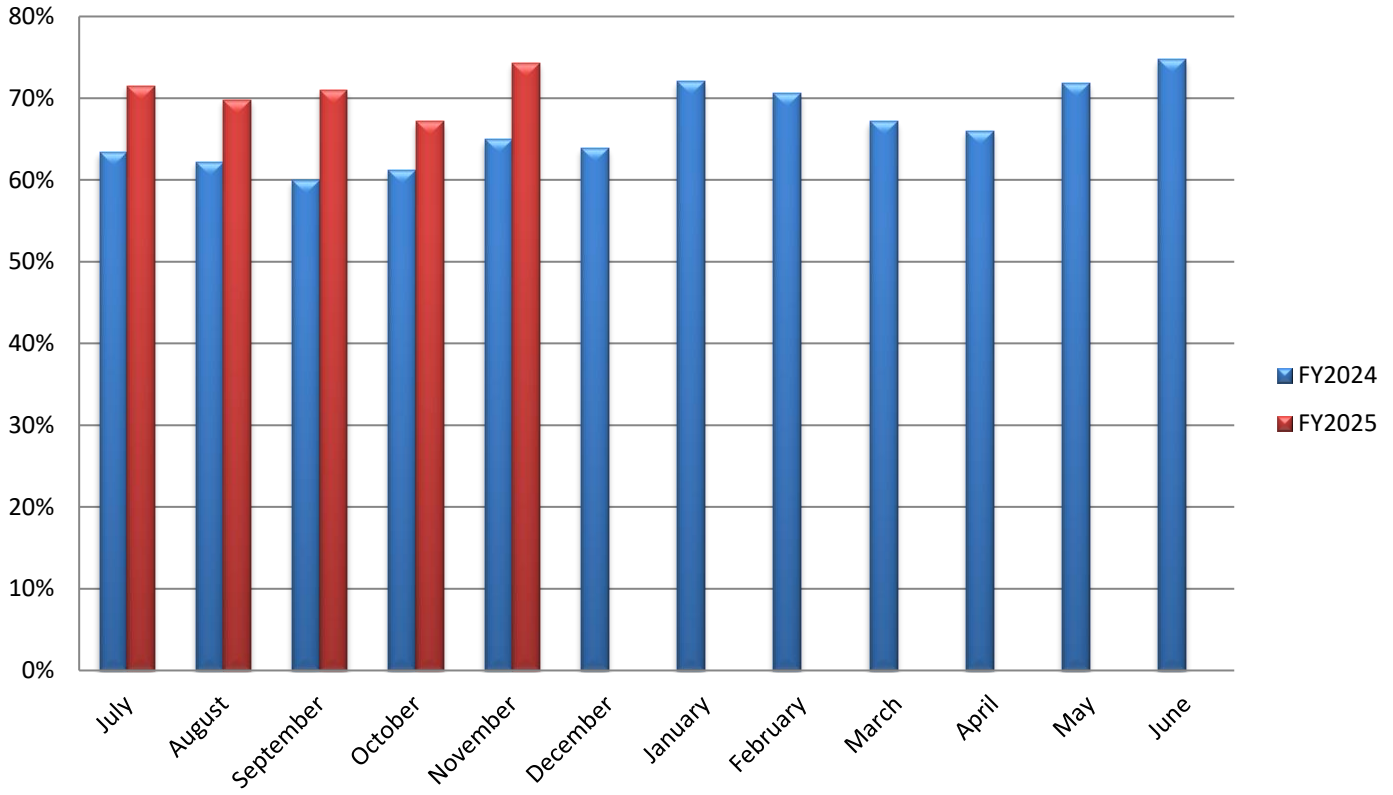
Table 5: Percent of Youth Psychotropic Medication

	1/24	2/24	3/24	4/24	5/24	6/24	7/24	8/24	9/24	10/24	11/24
Chicago	90.2%	86.0%	70.0%	71.9%	66.1%	67.2%	63.6%	63.4%	65.7%	72.7%	89.4%
Harrisburg	61.4%	70.7%	62.7%	63.3%	69.4%	72.6%	68.8%	69.7%	67.1%	60.2%	62.9%
Pere Marquette	68.8%	68.8%	67.7%	70.6%	63.2%	68.8%	84.2%	82.6%	76%	72.7%	77.8%
St. Charles	65.9%	51.2%	57.5%	44.4%	65.7%	69.8%	63.0%	58.8%	66.7%	53.1%	57.8%
Warrenville	81.8%	73.5%	85.7%	86.8%	95%	97.5%	95.2%	87.8%	91.2%	83.3%	84.8%
IDJJ Average	72.0%	70.6%	67.2%	66.0%	71.8%	74.7%	71.5%	69.8%	70.9%	67.2%	74.3%

Table 7: Distribution of Mental Health Levels

	Mental Health Level 0	Mental Health Level 1	Mental Health Level 2	Mental Health Level 3	Mental Health Level 3.5	Mental Health Level 4
January	0.0%	35.5%	61.4%	3.0%	0.0%	0.0%
February	0.0%	37.0%	59.2%	3.8%	0.0%	0.0%
March	0.0%	38.3%	56.1%	5.6%	0.0%	0.0%
April	0.0%	35.6%	58.4%	5.9%	0.0%	0.0%
May	0.0%	34.0%	61.9%	4.1%	0.0%	0.0%
June	0.0%	29.2%	65.6%	5.2%	0.0%	0.0%
July	0.0%	33.9%	62.5%	3.6%	0.0%	0.0%
August	0.0%	30.9%	65.7%	3.3%	0.0%	0.0%
September	0.0%	34.3%	63.8%	1.9%	0.0%	0.0%
October	0.0%	33.5%	61.8%	4.7%	0.0%	0.0%
November	0.0%	29.4%	68.8%	1.8%	0.0%	0.0%
IDJJ Average	0.0%	33.8%	62.3%	3.9%	0.0%	0.0%

Percent of Youth on Psychotropic Medication by Fiscal Year



Section 3: Substance Abuse Treatment Data

Table 9: Number of Treatment Participants

	1/24	2/24	3/24	4/24	5/24	6/24	7/24	8/24	9/24	10/24	11/24
Chicago	9	13	11	8	13	9	9	10	14	14	15
Harrisburg	18	19	22	17	18	15	12	16	14	15	18
Pere Marquette	6	6	4	5	3	3	6	6	8	7	7
St. Charles	2	3	3	2	1	0	1	1	1	2	5
Warrenville	10	10	7	8	9	13	10	12	13	11	15
IDJJ Total	45	51	47	40	44	37	38	45	50	49	60

Table 10: Average Length of Stay for Completers

	1/24	2/24	3/24	4/24	5/24	6/24	7/24	8/24	9/24	10/24	11/24
Chicago	-	-	103	152	94	-	115	115	85	-	92
Harrisburg	-	86	89		90	91	-	76	86	72	74
Pere Marquette	90	90	-	105	90	-	-	137	94	-	-
St. Charles	-	-	-	47	90	-	-	-	-	90	-
Warrenville	-	90	-	92	-	90	-	98	94	-	88
IDJJ Average	90	89	96	106	91	90	115	106	88	78	86

Table 11: Percent of Discharges by Reason

	1/24	2/24	3/24	4/24	5/24	6/24	7/24	8/24	9/24	10/24	11/24
Successful Completion	12.5%	40%	60%	50%	46.2%	71.4%	20%	70%	46.2%	33.3%	76.9%
Behavioral Discharge	0%	0%	0%	0%	0%	14.3%	0%	0%	0%	0%	0%
Youth Released	75%	40%	40%	50%	30.8%	0%	80%	10%	23.1%	50%	15.4%
Other Discharge	12.5%	20%	0%	0%	23.1%	14.3%	0%	20%	30.8%	16.7%	7.7%

Table 12: Primary Substance Abused

	1/24	2/24	3/24	4/24	5/24	6/24	7/24	8/24	9/24	10/24	11/24
Marijuana	61.4%	63.3%	43.2%	50%	54.5%	65%	70.7%	62.2%	67.3%	58.1%	56.7%
Alcohol	6.8%	4.1%	6.8%	0%	0%	2.5%	2.4%	2.2%	5.8%	9.3%	6.7%
Opioids	9.1%	12.2%	18.2%	15.6%	13.6%	5%	4.9%	6.7%	9.6%	14.0%	18.3%
Other Drugs	22.7%	20.4%	31.8%	34.3%	29.5%	27.5%	22.0%	28.9%	17.3%	18.6%	18.3%
No Diagnosis	0%	0%	0%	0%	2.3%	0%	0%	0%	0%	0%	0%

Chart 5: Number of Treatment Participants by Facility

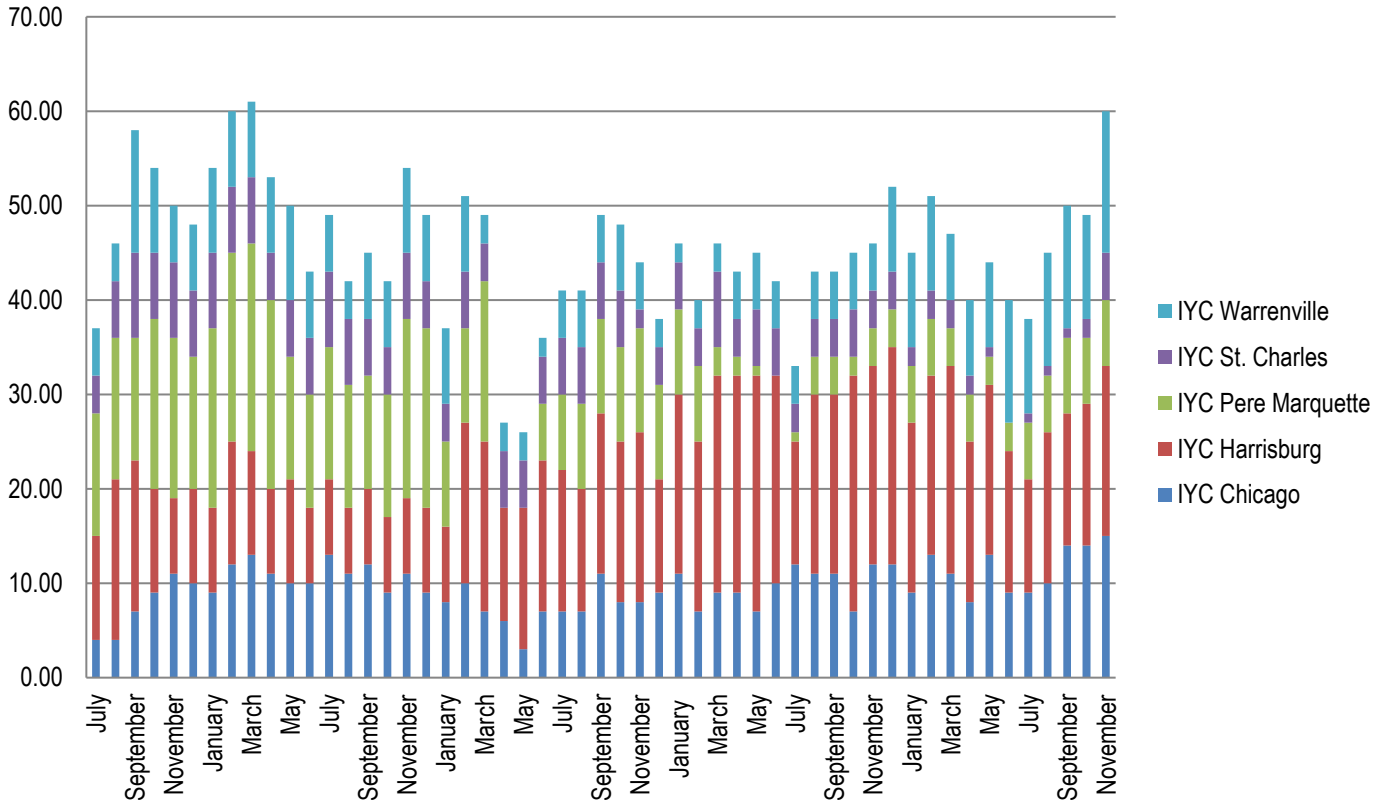
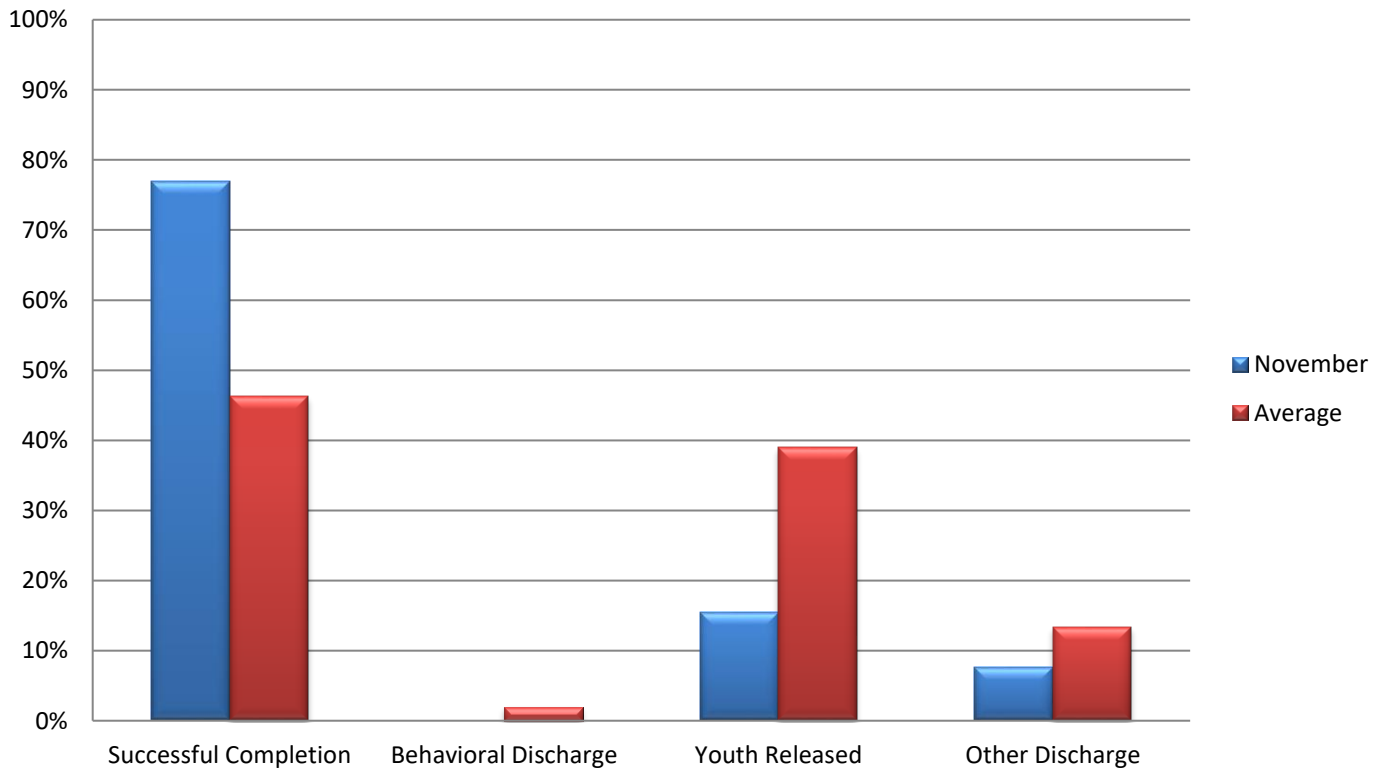


Chart 6: Discharges by Reason



Section 4: Education Data

Table 13: Students Enrolled in School

	1/24	2/24	3/24	4/24	5/24	6/24	7/24	8/24	9/24	10/24	11/24
Chicago	31	24	24	24	23	22	20	30	34	30	
Harrisburg	61	58	62	56	55	49	58	57	48	48	
Pere Marquette	8	7	8	8	6	8	10	13	11	9	
St. Charles	-	-	-	-	-	-	-	-	-	-	
Warrenville	25	26	30	29	31	31	29	33	36	38	
IDJJ Total	125	115	124	117	115	110	117	133	129	125	

Table 14: Teachers Employed

	1/24	2/24	3/24	4/24	5/24	6/24	7/24	8/24	9/24	10/24	11/24
Chicago	7	7	7	7	6	10	11	12	12	12	
Harrisburg	11	10	10	10	11	11	11	11	11	11	
Pere Marquette	6	6	6	6	6	6	6	6	6	6	
St. Charles	1	1	1	1	1	1	1	1	1	1	
Warrenville	6	6	6	6	6	8	7	12	12	13	
IDJJ Total	31	30	30	30	30	36	36	42	42	43	

Table 15: Student to Teacher Ratio

	1/24	2/24	3/24	4/24	5/24	6/24	7/24	8/24	9/24	10/24	11/24
Chicago	4.4	3.4	3.4	3.4	3.8	3.7	1.8	2.5	2.8	2.5	
Harrisburg	5.5	5.8	6.2	5.6	5	4.5	5.3	5.2	4.4	4.4	
Pere Marquette	1.3	1.2	1.3	1.3	1	1.3	1.7	2.2	1.8	1.5	
St. Charles	-	-	-	-	-	-	-	-	-	-	
Warrenville	4.2	4.3	5	4.8	5.2	5.2	4.1	2.8	3	2.9	
IDJJ Average	4.0	3.8	4.1	3.9	3.8	3.7	3.3	3.2	3.1	2.9	

Table 17: Overall Diplomas Awarded

	1/24	2/24	3/24	4/24	5/24	6/24	7/24	8/24	9/24	10/24	11/24	Total
Chicago	0	3	1	4	1	1	2	0	0	0		12
Harrisburg	1	4	1	2	4	1	2	2	1	2		20
Pere Marquette	1	3	1	1	1	0	0	0	2	0		9
St. Charles	-	-	-	-	-	-	-	-	-	-		0
Warrenville	0	1	1	2	8	0	0	0	0	3		15
IDJJ Total	2	11	4	9	14	2	4	2	3	5		56

Table 18: Percent of Special Education Students

	1/24	2/24	3/24	4/24	5/24	6/24	7/24	8/24	9/24	10/24	11/24
Chicago	35.5%	37.5%	41.7%	33.3%	47.8%	54.5%	50%	33.3%	35.3%	50%	
Harrisburg	49.2%	44.9%	41.9%	53.6%	45.5%	36.7%	44.8%	36.8%	35.4%	52.1%	
Pere Marquette	50%	71.4%	25%	25%	33.3%	62.5%	60%	53.8%	45.5%	55.5%	
St. Charles	-	-	-	-	-	-	-	-	-	-	
Warrenville	64%	57.7%	53.3%	62.1%	58.1%	61.3%	58.6%	54.5%	55.6%	55.3%	
IDJJ Total	48.8%	47.8%	43.5%	49.6%	48.7%	49.1%	50.4%	42.1%	41.9%	52.8%	

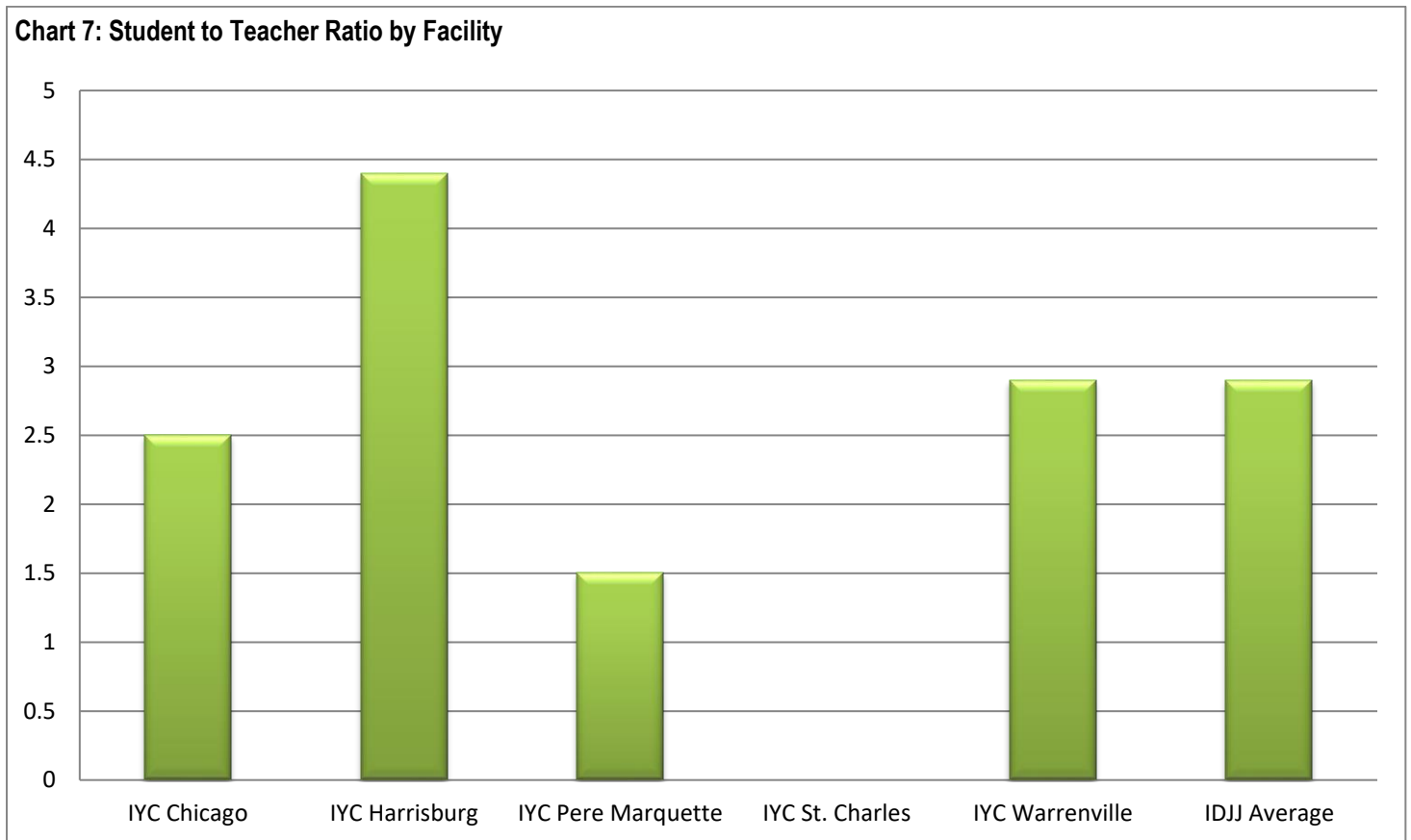
Table 20: Youth in Continuing Education

	Post-Secondary	Collegiate
<i>IYC Chicago</i>		
<i>IYC Harrisburg</i>		
<i>IYC Pere Marquette</i>		
<i>IYC St. Charles</i>		
<i>IYC Warrenville</i>		
IDJJ Total		

Table 21: Number and Percent of Cancelled Whole School Days

	Number	Percent
<i>IYC Chicago</i>	0	0%
<i>IYC Harrisburg</i>	0	0%
<i>IYC Pere Marquette</i>	0	0%
<i>IYC St. Charles</i>	0	0%
<i>IYC Warrenville</i>	0	0%
IDJJ Total	0	0%

Chart 7: Student to Teacher Ratio by Facility



Section 5: Reportable Incident Data

Table 21a: Number of Reportable Incidents

	1/24	2/24	3/24	4/24	5/24	6/24	7/24	8/24	9/24	10/24	11/24
Chicago	6	8	8	8	5	14	11	20	10	24	22
Harrisburg	39	31	23	34	23	26	31	35	15	31	25
Pere Marquette	5	3	2	2	1	5	12	8	20	7	2
St. Charles	8	4	6	6	0	1	12	7	7	2	5
Warrenville	6	9	15	17	17	12	15	13	17	31	8
IDJJ Total	64	55	54	67	46	58	81	83	69	95	62

Table 21b: Rate of Reportable Incidents per 100 Youth

	1/24	2/24	3/24	4/24	5/24	6/24	7/24	8/24	9/24	10/24	11/24	Avg.
Chicago	15.2	19.7	21.2	18.9	12.6	35.7	25.8	44.2	19.5	46.8	42.1	27.4
Harrisburg	69.1	57.3	42.3	62.5	42.9	50	55.9	68.5	31.7	62.0	47.9	53.6
Pere Marquette	40.7	22.2	15.2	15.6	8	34.5	74.1	45.2	110.5	41.7	14.7	38.4
St. Charles	22.6	16.3	23.6	24.2	0	3.6	24.5	22.0	22.9	6.6	16.4	16.6
Warrenville	25.9	33.6	52.6	60.7	50.1	37.3	41.3	43.3	46.2	83.8	22.8	45.2
IDJJ Average	38.4	34.4	33.9	41.3	28.4	34.9	45.1	47.2	37.5	51.3	33.8	38.7

Table 22a: Number of Youth on Youth Assaults

	1/24	2/24	3/24	4/24	5/24	6/24	7/24	8/24	9/24	10/24	11/24
Chicago	3	1	5	1	1	3	1	5	2	5	7
Harrisburg	14	7	5	9	9	11	9	15	3	15	5
Pere Marquette	4	1	1	1	0	0	4	3	6	4	0
St. Charles	3	0	1	2	0	0	3	1	0	0	1
Warrenville	0	3	4	2	2	2	1	2	1	2	2
IDJJ Total	24	12	16	15	12	16	18	26	12	26	15

Table 22b: Rate of Youth on Youth Assaults per 100 Youth

	1/24	2/24	3/24	4/24	5/24	6/24	7/24	8/24	9/24	10/24	11/24	Avg.
Chicago	7.6	2.5	13.2	2.4	2.5	7.7	2.3	11.1	3.9	9.7	13.4	6.9
Harrisburg	24.8	12.9	9.2	16.5	16.8	21.2	16.2	29.4	6.3	30.0	9.6	17.5
Pere Marquette	32.5	7.4	7.6	7.8	0	0	24.7	16.9	33.1	23.8	0	14.0
St. Charles	8.5	0	3.9	8.1	0	0	6.1	3.1	0	0	3.3	3.0
Warrenville	0.0	11.2	14.0	7.1	5.9	6.2	2.8	6.7	2.7	5.4	5.7	6.2
IDJJ Average	14.4	7.5	10.0	9.2	7.4	9.6	10.0	14.8	6.5	14.0	8.2	10.1

Table 23a: Number of Youth Fights

	1/24	2/24	3/24	4/24	5/24	6/24	7/24	8/24	9/24	10/24	11/24
Chicago	1	3	2	5	2	6	8	10	5	10	9
Harrisburg	25	21	14	21	13	11	18	15	10	11	16
Pere Marquette	0	1	0	1	1	5	3	2	7	1	1
St. Charles	3	2	2	3	0	1	7	4	6	1	3
Warrenville	3	3	10	10	10	10	10	7	13	22	4
IDJJ Total	32	30	28	40	26	33	44	38	41	45	33

Table 23b: Rate of Youth Fights per 100 Youth

	1/24	2/24	3/24	4/24	5/24	6/24	7/24	8/24	9/24	10/24	11/24	Avg.
Chicago	2.6	7.4	5.3	11.8	5.0	15.3	18.7	22.1	9.7	19.5	17.2	12.2
Harrisburg	44.3	38.8	25.7	38.6	24.3	21.2	32.4	29.4	21.1	22	30.7	29.9
Pere Marquette	0	7.4	0	7.8	8	34.5	18.5	11.3	38.7	6.0	7.4	12.7
St. Charles	8.5	8.1	7.9	12.1	0	3.6	14.3	12.6	19.6	3.3	9.9	9.1
Warrenville	12.9	11.2	35.1	35.7	29.5	31.1	27.5	23.3	35.3	59.5	11.4	28.4
IDJJ Average	19.2	18.8	17.6	24.7	16.0	19.9	24.4	21.6	22.3	24.3	18.0	20.6

Table 24a: Number of Youth on Staff Assaults

	1/24	2/24	3/24	4/24	5/24	6/24	7/24	8/24	9/24	10/24	11/24
Chicago	2	4	1	2	2	5	2	5	3	9	6
Harrisburg	0	3	4	4	1	4	4	5	2	5	4
Pere Marquette	1	1	1	0	0	0	5	3	7	2	1
St. Charles	2	2	3	1	0	0	2	2	1	1	1
Warrenville	3	3	1	5	5	0	4	4	3	7	2
IDJJ Total	8	13	10	12	8	9	17	19	16	24	14

Table 24b: Rate of Youth on Staff Assaults per 100 Youth

	1/24	2/24	3/24	4/24	5/24	6/24	7/24	8/24	9/24	10/24	11/24	Avg.
Chicago	5.1	9.8	2.6	4.7	5.0	12.8	4.7	11.1	5.8	17.5	11.5	8.2
Harrisburg	0	5.5	7.4	7.4	1.9	7.7	7.2	9.8	4.2	10	7.7	6.3
Pere Marquette	8.1	7.4	7.6	0	0	0	30.9	16.9	38.7	11.9	7.4	11.7
St. Charles	5.6	8.1	11.8	4.0	0	0	4.1	6.3	3.3	3.3	3.3	4.5
Warrenville	12.9	11.2	3.5	17.9	14.7	0	11.0	13.3	8.2	18.9	5.7	10.7
IDJJ Average	4.8	8.1	6.3	7.4	4.9	5.4	9.5	10.8	8.7	13.0	7.6	7.9

Chart 9: Rate of Reportable Incidents Per 100 Youth

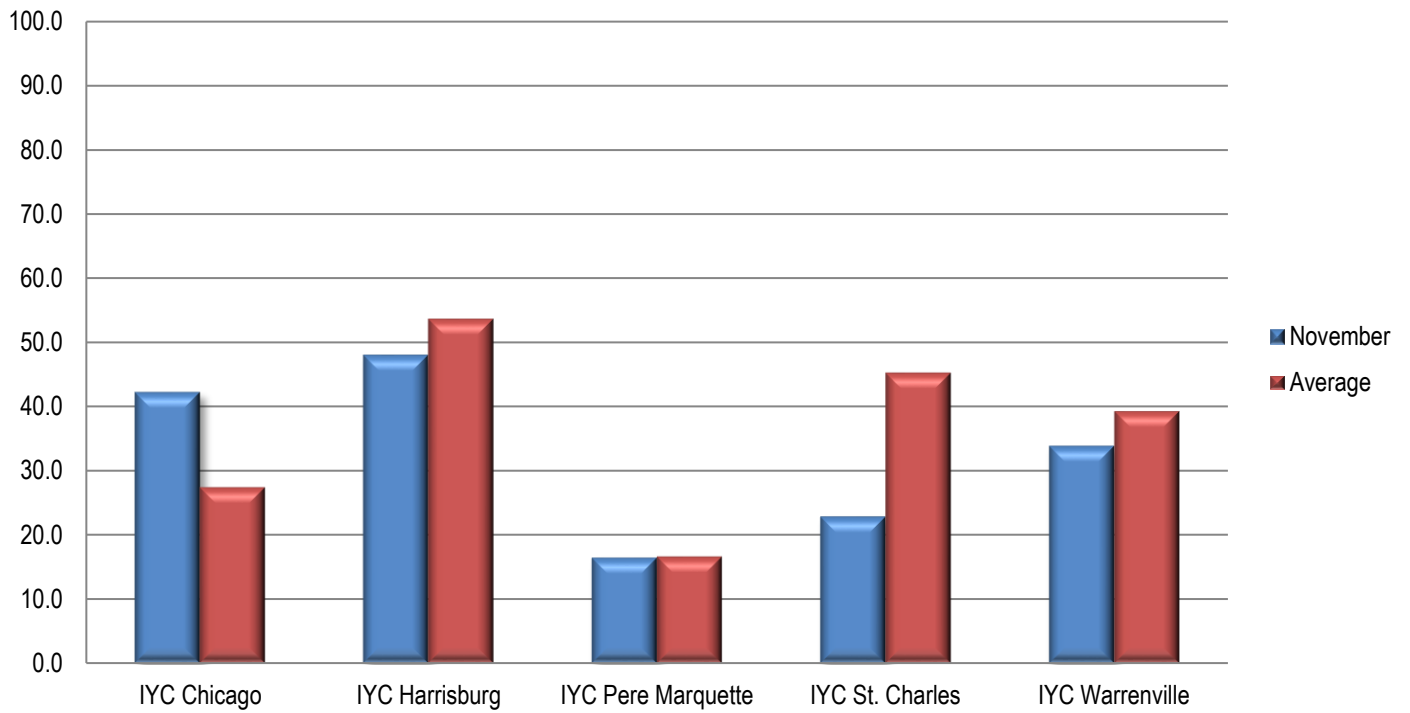
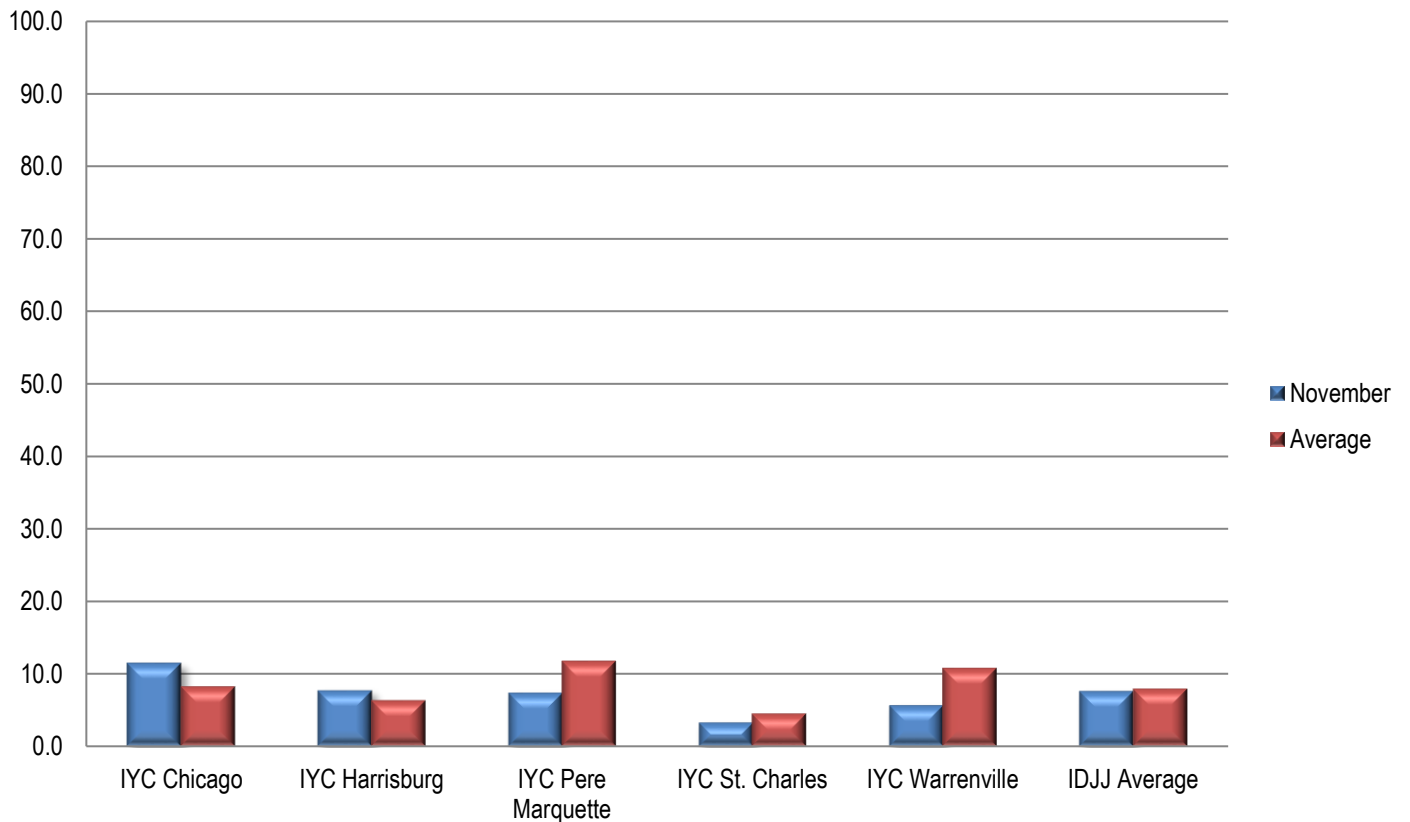


Chart 10: Rate of Youth on Staff Assault Per 100 Youth



Section 6: Indicator Data

Table 25: Uses of Chemical Restraints

	1/24	2/24	3/24	4/24	5/24	6/24	7/24	8/24	9/24	10/24	11/24
Chicago	0	0	1	0	0	2	2	5	2	4	0
Harrisburg	1	2	0	2	1	0	0	1	0	1	2
Pere Marquette	0	0	0	0	0	0	0	0	0	0	0
St. Charles	1	1	0	1	0	0	0	1	0	1	0
Warrenville	0	0	0	1	1	0	0	0	0	3	2
IDJJ Total	2	3	1	4	2	2	2	7	2	8	4

Table 26: Uses of Mechanical Restraints

	1/24	2/24	3/24	4/24	5/24	6/24	7/24	8/24	9/24	10/24	11/24
Chicago	1	2	2	2	1	5	2	2	3	8	6
Harrisburg	11	16	6	3	7	14	8	24	10	7	8
Pere Marquette	1	1	1	0	0	1	5	2	9	4	1
St. Charles	0	1	1	1	0	0	2	2	1	0	1
Warrenville	3	2	8	10	4	3	4	9	4	9	2
IDJJ Total	16	22	18	16	12	23	21	39	27	28	18

Uses of chemical and mechanical restraints have varied throughout the year, although the use in the current year is much lower than years past. More important than how frequent they are is whether they are used according to policy and for appropriate reasons.

Section 7: Confinement Information

Table 28a: Use of Behavioral Holds

	1/24	2/24	3/24	4/24	5/24	6/24	7/24	8/24	9/24	10/24	11/24
Chicago	5	9	8	9	2	14	11	32	13	8	24
Harrisburg	46	54	20	40	32	34	59	53	20	51	57
Pere Marquette	3	3	1	4	2	10	11	12	21	8	0
St. Charles	10	10	18	10	0	5	40	6	9	5	24
Warrenville	39	38	55	73	52	61	34	41	46	77	24
IDJJ Total	103	114	102	136	88	124	155	144	109	149	129

Table 28b: Rate of Behavioral Hold

	1/24	2/24	3/24	4/24	5/24	6/24	7/24	8/24	9/24	10/24	11/24
Chicago	13	22	21	21	5	36	26	71	25	16	46
Harrisburg	82	100	37	74	60	65	106	104	42	102	109
Pere Marquette	24	22	8	31	16	69	68	68	116	48	0
St. Charles	28	41	71	40	0	18	82	20	29	17	79
Warrenville	168	142	193	261	153	189	94	130	125	208	68
IDJJ Average	62	71	64	84	54	75	86	82	59	80	70

Table 28c: Average Length of Behavioral Hold

	1/24	2/24	3/24	4/24	5/24	6/24	7/24	8/24	9/24	10/24	11/24
Chicago	96	81	163	38	105	84	96	146	161	144	128
Harrisburg	145	139	122	145	106	115	152	107	110	122	124
Pere Marquette	53	62	60	73	54	4	80	47	55	70	-
St. Charles	185	94	175	179	-	108	118	34	75	125	144
Warrenville	122	105	127	147	136	127	143	259	156	174	115
IDJJ Average	135	117	137	139	122	108	132	151	122	146	128

Table 29: Use of Crisis Care

	1/24	2/24	3/24	4/24	5/24	6/24	7/24	8/24	9/24	10/24	11/24
Chicago	-	-	-	-	-	-	-	4	-	-	-
Harrisburg	-	-	-	1	-	-	-	-	-	-	-
Pere Marquette	1	2	1	-	-	-	3	4	1	4	-
St. Charles	-	-	5	-	-	-	1	1	-	1	-
Warrenville	1	-	-	-	3	1	2	1	-	-	-
IDJJ Total	2	2	6	1	3	1	6	10	1	5	0

Table 30: Use of Medical Hold

	1/24	2/24	3/24	4/24	5/24	6/24	7/24	8/24	9/24	10/24	11/24
Chicago	-	-	-	-	-	-	-	-	-	-	-
Harrisburg	-	-	-	-	-	-	-	-	-	-	-
Pere Marquette	-	-	-	-	-	-	-	-	-	1	-
St. Charles	7	1	-	1	-	-	1	-	-	-	1
Warrenville	1	-	-	-	-	-	-	-	-	-	-
IDJJ Average	8	1	0	1	0	0	1	0	0	1	1

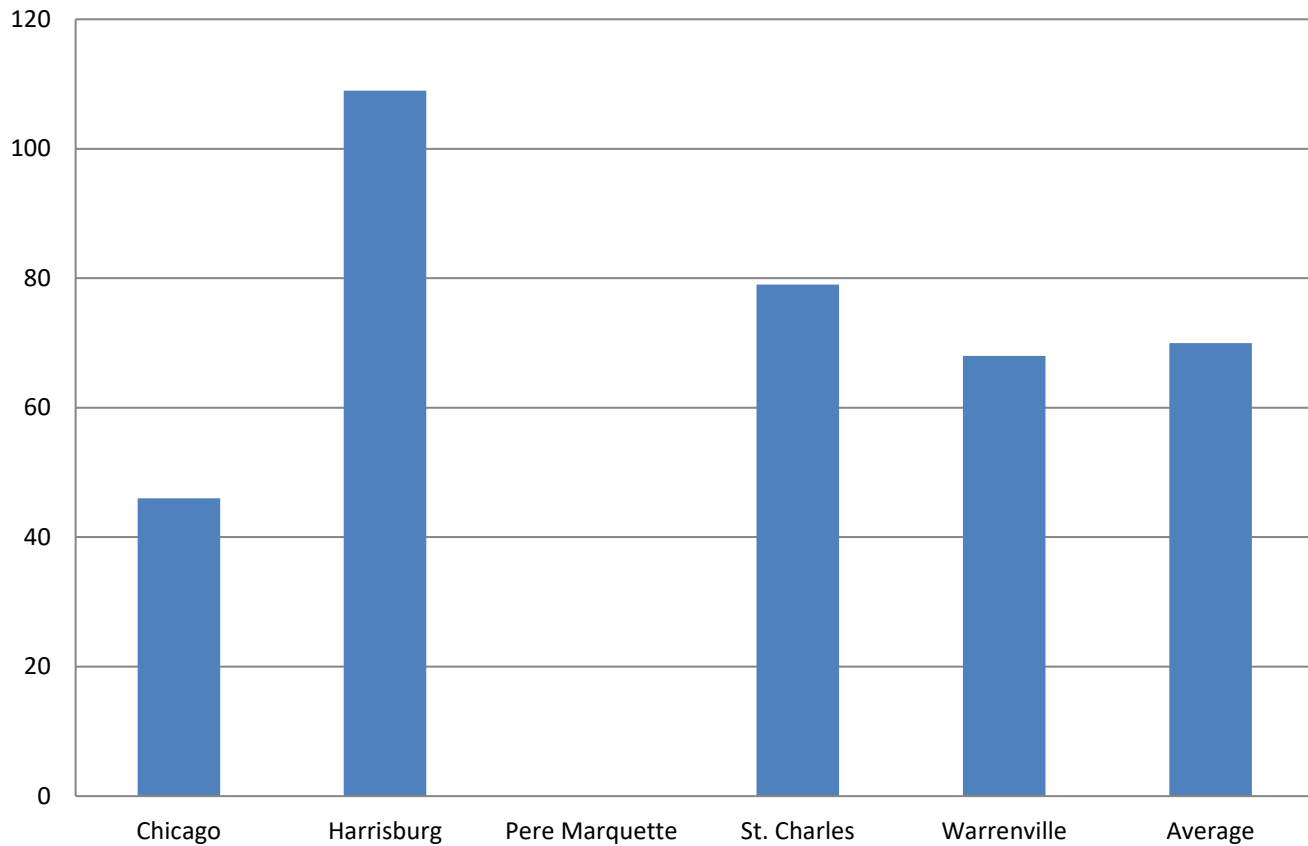
Table 31: Use of Administrative Hold

	1/24	2/24	3/24	4/24	5/24	6/24	7/24	8/24	9/24	10/24	11/24
Chicago	-	-	-	-	-	53	-	12	5	-	-
Harrisburg	2	-	-	-	-	-	2	2	-	-	-
Pere Marquette	-	-	-	-	-	-	-	-	-	-	-
St. Charles	-	-	-	6	-	-	7	-	9	-	-
Warrenville	89	119	128	31	51	277	261	16	140	126	71
IDJJ Total	91	119	128	37	51	330	270	30	154	126	71

Table 32: Use of Investigative Status

	1/24	2/24	3/24	4/24	5/24	6/24	7/24	8/24	9/24	10/24	11/24
Chicago	-	-	-	-	-	-	-	-	-	-	-
Harrisburg	-	-	-	-	1	-	-	-	-	-	-
Pere Marquette	-	-	-	-	-	-	-	-	-	-	-
St. Charles	-	-	-	-	-	18	3	-	-	-	-
Warrenville	4	4	6	1	-	-	2	5	-	1	4
IDJJ Total	4	4	6	1	1	18	5	5	0	1	4

Chart 12: Rate per 100 youth of Behavioral Holds



Section 8: Aftercare Data

Table 33: Youth Monitored by Aftercare

	1/24	2/24	3/24	4/24	5/24	6/24	7/24	8/24	9/24	10/24	11/24
Total Number of Youth Assigned to Aftercare	408	406	408	403	400	408	416	410	401	408	400
Youth in Community	208	216	211	208	214	208	211	201	188	197	188
Youth in Facilities	120	110	109	111	104	117	116	120	125	123	125
Youth with Pending Criminal Cases	71	71	75	73	72	73	77	78	79	75	73
Youth with Warrants and Out of State	9	9	13	11	10	10	12	11	9	13	14

Table 34: Caseloads in Aftercare (Average per Specialist)

	1/24	2/24	3/24	4/24	5/24	6/24	7/24	8/24	9/24	10/24	11/24
Youth Assigned to Specialist	8.2	8.2	8.3	8.0	8.0	8.1	8.2	8.0	7.8	8.0	7.8
Youth in Community	5.2	5.4	5.5	5.2	5.4	5.2	5.3	5.0	4.7	4.9	4.7
Youth in Facilities	3.0	2.8	2.8	2.8	2.6	2.9	2.9	3.0	3.1	3.1	3.1

Table 35: Average Specialist Caseload by Aftercare Office – November 2024

	Number of Specialists	Number of Youth	Average Caseload	Number of Youth in Community	Average Caseload in Community
Chicago	7	53	7.6	30	4.3
Chicago Heights	3	21	7	12	4
Aurora	2	22	11	17	8.5
Rockford	4	34	8.5	14	3.5
Peoria	4	37	9.3	26	6.5
Belleville	7	56	8	31	4.4
Champaign	4	35	8.8	20	5
Springfield	2	18	9	12	6
Placement	6	37	6.2	26	4.3
IDJJ Total	40	313	7.8	188	4.7

Table 36: Specialist Contact with Youth by Aftercare Office – November 2024

	Number of Overall Contacts	Contacts per Youth	Contacts with Youth in Community	Contacts per Youth in Community
Chicago	102	1.9	95	3.2
Chicago Heights	48	2.3	38	3.2
Aurora	61	2.8	49	2.9
Rockford	121	3.6	82	5.9
Peoria	140	3.8	112	4.3
Belleville	139	2.5	109	3.5
Champaign	136	3.9	100	5
Springfield	50	2.8	45	3.8
Placement	155	4.2	124	4.8
IDJJ Total	952	3.0	754	4.0

Table 37a: Parole Revocations

	Parole Revocations Heard	Revocations Approved	Revocations Denied	Hearings Continued
<i>January</i>	12	8	4	0
<i>February</i>	1	1	0	0
<i>March</i>	8	5	3	0
<i>April</i>	9	6	3	0
<i>May</i>	6	4	2	0
<i>June</i>	3	2	1	0
<i>July</i>	11	7	4	0
<i>August</i>	7	3	4	0
<i>September</i>	7	6	1	0
<i>October</i>	10	7	3	0
<i>November</i>	4	3	1	0
IDJJ Average	7.4	4.9	2.5	0

Table 37b: Parole Revocation Rates

	Percent of Revocations Approved	Percent of Revocations Denied	Percent of Hearings Continued
<i>January</i>	66.7%	33.3%	0%
<i>February</i>	100%	0%	0%
<i>March</i>	62.5%	37.5%	0%
<i>April</i>	66.7%	33.3%	0%
<i>May</i>	66.7%	33.3%	0%
<i>June</i>	66.7%	33.3%	0%
<i>July</i>	63.6%	36.4%	0%
<i>August</i>	42.9%	57.1%	0%
<i>September</i>	85.7%	14.3%	0%
<i>October</i>	70%	30%	0%
<i>November</i>	75%	25%	0%
IDJJ Average	69.7%	30.3%	0%

With lower numbers of admission for technical parole violators, the numbers of parole revocation hearings held monthly has greatly decreased compared to previous years.

Section 9: Population Stock/Flow

Table 38: Institutional Stock/Flow

	1/24	2/24	3/24	4/24	5/24	6/24	7/24	8/24	9/24	10/24	11/24
Number of Admissions per Month	32	19	36	31	25	35	39	23	34	33	31
Percent of Admissions Parole Violators	18.8%	5.3%	13.9%	19.4%	8%	11.4%	15.4%	8.7%	20.6%	9.1%	12.9%
Number of Facility Exits per Month	33	26	34	25	32	16	38	24	27	33	26
Percent of Exits to Aftercare Supervision	90.9%	100%	97.1%	88%	93.8%	100%	92.1%	91.7%	92.6%	97.0%	100%

Table 39: Aftercare Stock/Flow

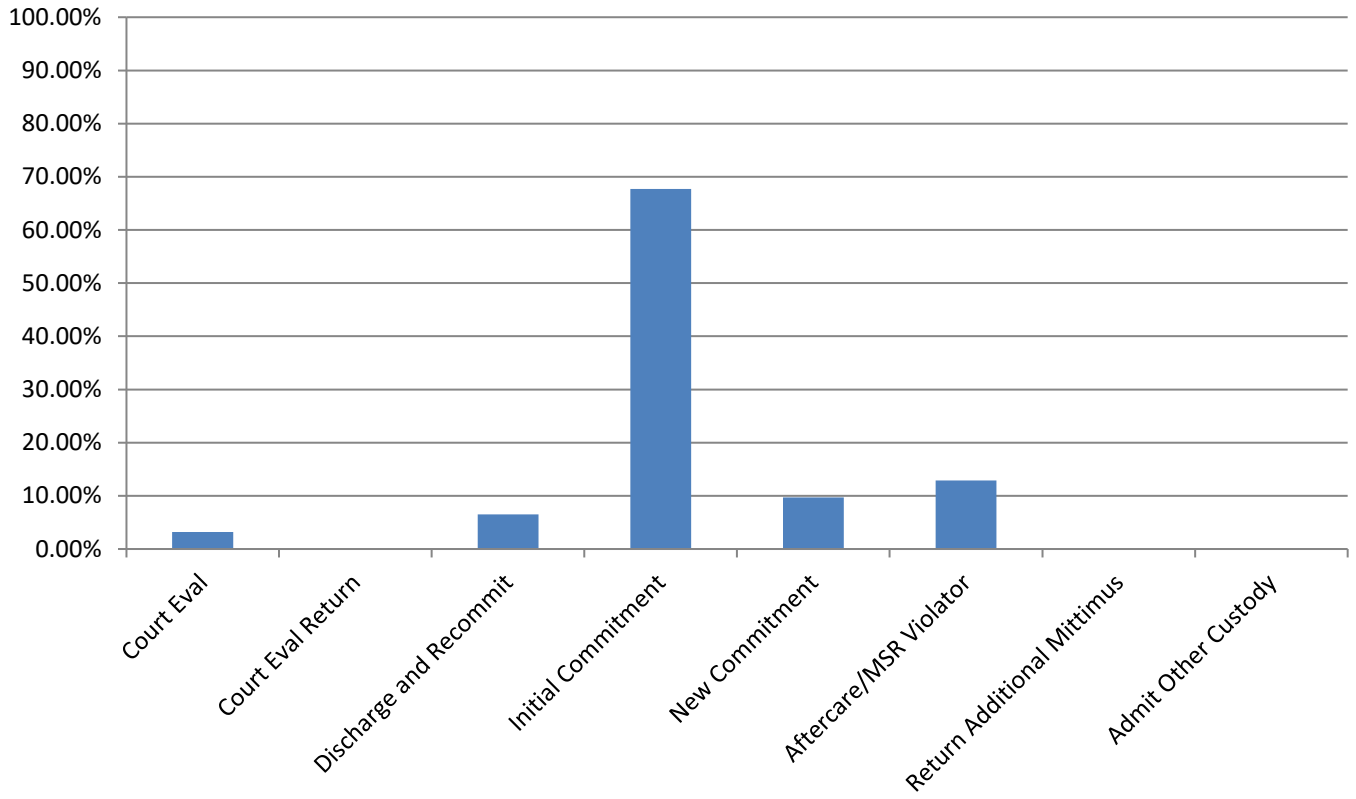
	1/24	2/24	3/24	4/24	5/24	6/24	7/24	8/24	9/24	10/24	11/24
Number of New Supervised Youth	32	27	34	25	34	18	36	22	25	33	26
Number of Exits from Aftercare	16	16	22	21	18	14	17	22	29	17	25

Table 40: Admissions to Facilities by Type

	November 2024	
	Number	Percent
Court Evaluation	1	3.2%
Court Evaluation Return	0	0%
Discharged and Recommitted	2	6.5%
Initial Commitment	21	67.7%
New Commitment	3	9.7%
Aftercare/MSR Violator	4	12.9%
Return Additional Mittimus	0	0%
Admit from Other Custody	0	0%
Total	31	

The decrease in DJJ populations is a direct effect of both decreasing court admissions, decreasing admissions for technical violations, and decreases in length of stay during the fiscal year. Additionally, rates and numbers of discharges from Aftercare have increased as well, which has helped those numbers stay lower as well, which provides fewer youth to be readmitted into facilities. Looking at the types of admissions to DJJ, a greater percent of youth are initial commitments than in previous years.

Chart 13: Admission Types to Facility, November 2024



Section 10: TRD Data for November 2024

Table 41: Adjustments by Facility

	Reductions	Extensions
<i>IYC Chicago</i>	211	28
<i>IYC Harrisburg</i>	40	14
<i>IYC Pere Marquette</i>	59	2
<i>IYC St. Charles</i>	48	2
<i>IYC Warrenville</i>	47	11
Total	405	57

Table 42: Types of Adjustments Used

	CHI	HRG	PER	STC	WRV	DJJ Overall
<i>BARJ Reduction</i>	0	0	0	0	0	0
<i>Delinquent Program Reduction</i>	14	5	5	1	0	25
<i>Ed/Voc Reduction</i>	27	2	16	23	0	68
<i>Grade Level Reduction</i>	8	0	1	0	5	14
<i>JSO Completion Reduction</i>	0	0	0	0	0	0
<i>No Maj. Sanc. Reductions</i>	22	4	2	1	13	42
<i>Other Tx Reduction</i>	0	0	7	0	0	7
<i>SA Completion Reduction</i>	20	4	3	1	14	42
<i>YASI Goal Reduction</i>	120	25	25	22	15	207
<i>Discipline Extension</i>	28	14	2	2	11	57

Chart 14: Types of Adjustments used by Agency

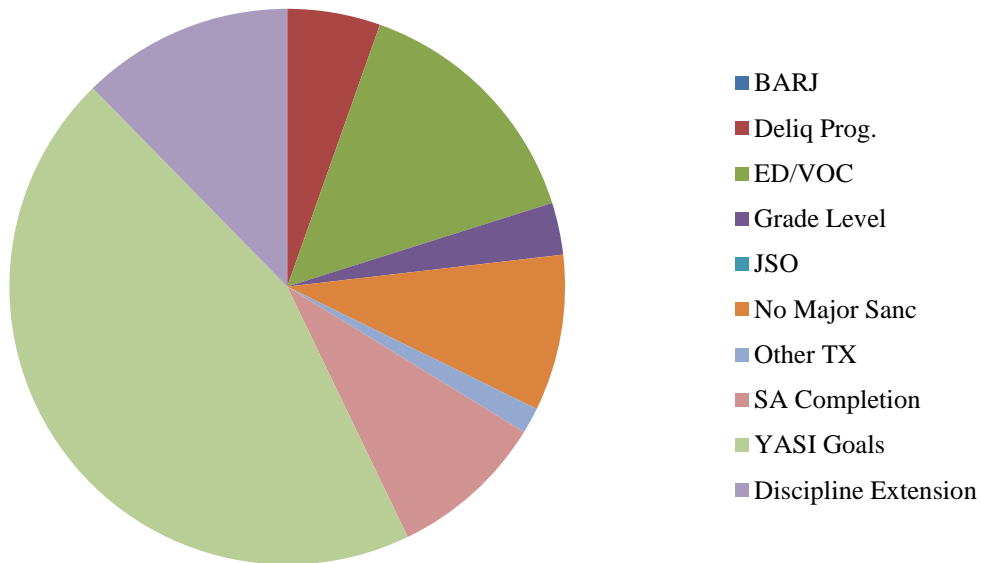


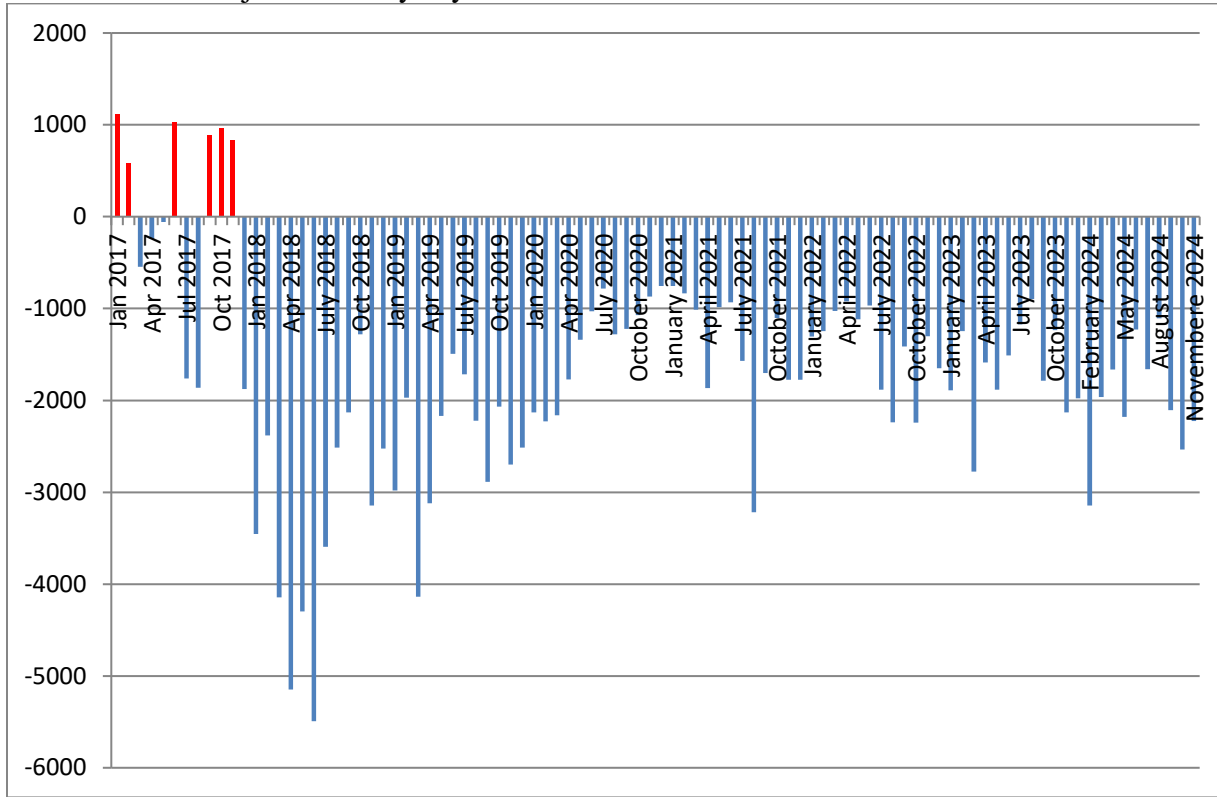
Table 45: Frequency of Discipline Extensions

	1/24	2/24	3/24	4/24	5/24	6/24	7/24	8/24	9/24	10/24	11/24
<i>IYC Chicago</i>	33	24	4	14	5	8	26	25	35	47	28
<i>IYC Harrisburg</i>	29	25	9	22	17	41	25	43	29	27	14
<i>IYC Pere Marquette</i>	1	6	2	1	3	1	5	15	25	18	2
<i>IYC St. Charles</i>	7	2	0	17	1	2	3	15	4	7	2
<i>IYC Warrenville</i>	3	2	6	14	17	5	9	4	16	16	11
Total	73	59	21	68	43	57	64	102	109	115	57

Table 46: Average Length of Discipline Extension

	1/24	2/24	3/24	4/24	5/24	6/24	7/24	8/24	9/24	10/24	11/24
<i>IYC Chicago</i>	10	9	4	7	9	8	9	13	8	9	10
<i>IYC Harrisburg</i>	5	7	6	11	5	8	11	12	8	11	8
<i>IYC Pere Marquette</i>	4	7	10	2	3	5	5	6	7	7	47
<i>IYC St. Charles</i>	24	4	0	8	5	18	24	9	14	6	20
<i>IYC Warrenville</i>	12	15	22	8	7	8	5	18	11	5	18
Average	9	8	10	9	6	8	10	11	8	8	13

Summed Total Adjustment Days by Month



Section 11: YASI

Table 47: YASI Pre-Screens: November 2024

	Legal Risk	Social Risk	Protective	Overall Risk
<i>High</i>	75	62	7	74
<i>Moderate</i>	15	25	45	15
<i>Low</i>	1	4	39	2
Total	91	91	91	91

Table 48: YASI Full Assessments: Risk

	Dynamic	Static	Overall
<i>Very High</i>	8	-	-
<i>High</i>	20	86	40
<i>Moderate-High</i>	27	-	-
<i>Moderate</i>	25	2	27
<i>Low-Moderate</i>	8	-	-
<i>Low</i>	2	2	23
<i>None</i>	0	0	0
Total	90	90	90

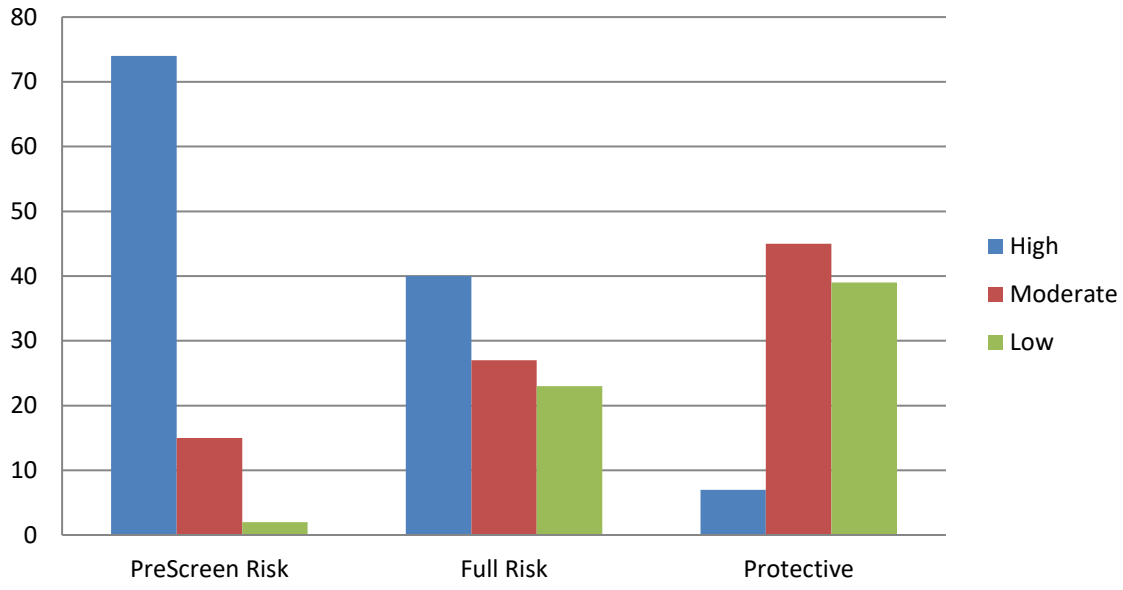
Table 49: YASI Full Assessments: Protective

	Dynamic
<i>Very High</i>	6
<i>High</i>	13
<i>Moderate-High</i>	26
<i>Moderate</i>	26
<i>Low-Moderate</i>	11
<i>Low</i>	7
<i>None</i>	1
Total	90

Table 47: Strength Factors

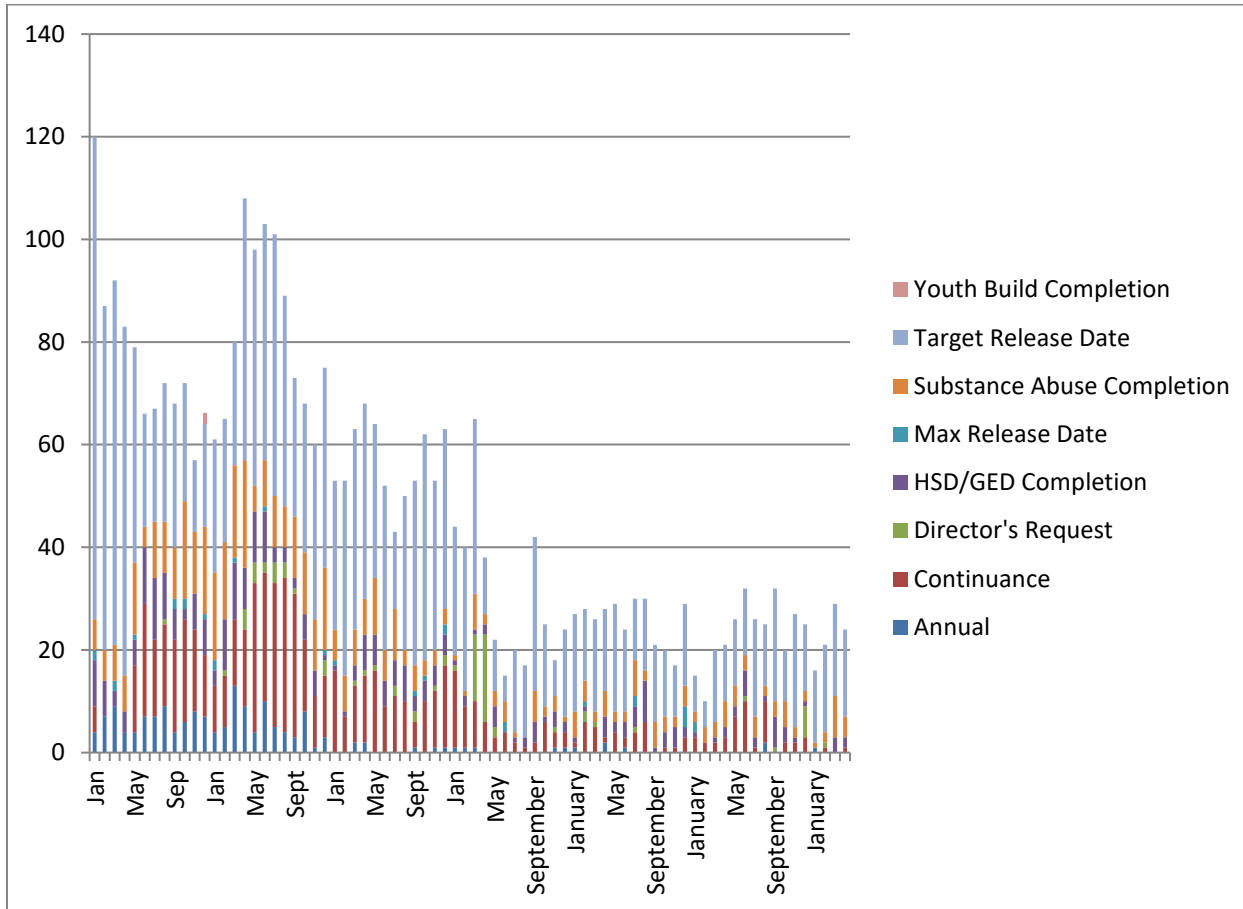
	Family	School	Peer/ Community	Aggression /Violence	Attitudes	Adaptive Skills	Emp/ Free Time
<i>High</i>	5	13	10	7	2	2	42
<i>Moderate</i>	36	31	51	12	14	11	0
<i>Low</i>	42	20	11	10	32	33	38
<i>None</i>	7	26	18	61	42	44	10
Total	90	90	90	90	90	90	90

Chart 16: Risk and Protective Levels of Youth



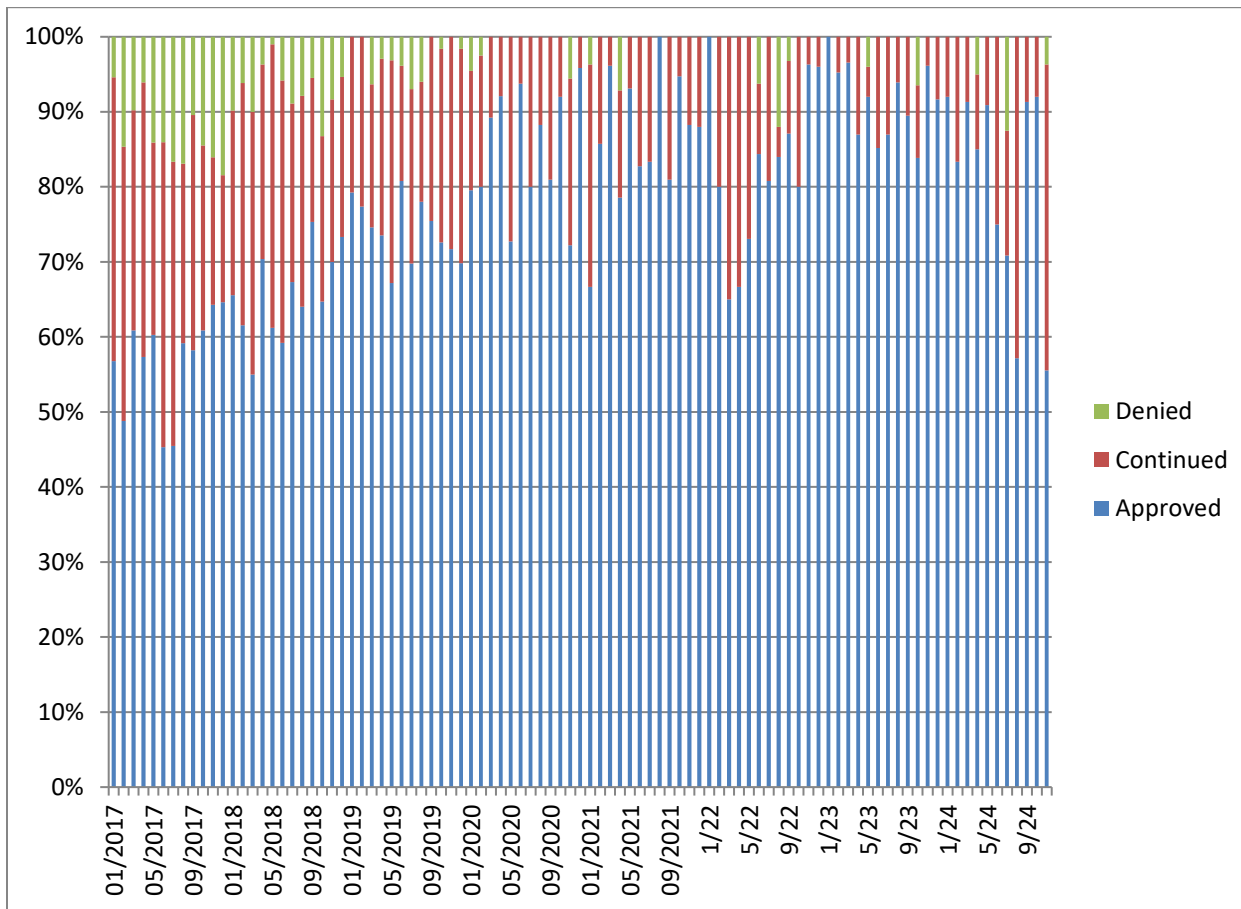
Release Reviews

Reviews by Type per Month



	Annual	Cont.	Director's Request	HSD/GED	Max Release Date	Substance Abuse	Target Release Date	Total
January	0	1	0	1	2	0	21	25
February	0	3	0	0	0	3	12	18
March	0	4	0	2	0	1	16	23
April	1	0	0	0	0	1	18	20
May	1	4	1	2	0	0	16	24
June	0	3	1	0	1	1	10	16
July	0	4	3	1	0	1	15	24
August	0	3	0	1	0	4	6	14
September	1	4	1	2	0	1	14	23
October	0	3	2	3	0	3	14	25
November	1	1	3	0	0	5	17	27

Percent of Release Reviews by Outcome and Month



Demographic Profile for November 30th, 2024

Sex	Institutions		Aftercare	
	Number	Percent	Number	Percent
Male	178	94.2%	262	95.6%
Female	11	5.8%	12	4.4%

Age	Institutions		Aftercare	
	Number	Percent	Number	Percent
Average Age	17.6		18.0	
16 & Under	58	30.7%	68	24.8%
17 to 20	130	68.8%	196	71.5%
20.5 & Over	1	0.5%	8	2.9%

Race/Ethnicity	Institutions		Aftercare	
	Number	Percent	Number	Percent
White	33	17.5%	50	18.2%
Black	127	67.3%	189	69.0%
Hispanic	21	11.1%	23	8.4%
Middle Eastern	1	0.4%	0	0%
Multi/Biracial	7	3.7%	12	4.3%

Committing Counties ¹	Institutions		Aftercare	
	Number	Percent	Number	Percent
Cook	62	32.8%	83	30.3%
Collar Counties	17	9.0%	17	6.2%
Metro-East	11	5.8%	15	5.5%
Central	56	29.6%	91	33.2%
Southern	15	7.9%	14	5.1%
Northern	28	14.8%	42	15.3%
Out of State	0	0%	12	4.3%

¹ Committing Counties: Cook = Cook; Collar Counties = DuPage, Kane, Lake, McHenry, Will; Metro East Counties = Madison, St. Clair; Central IL Counties = Adams, Bond, Brown, Calhoun, Cass, Champaign, Christian, Clark, Coles, Crawford, Cumberland, Dewitt, Douglas, Edgar, Effingham, Fayette, Ford, Fulton, Greene, Hancock, Henderson, Iroquois, Jasper, Jersey, Knox, Livingston, Logan, McDonough, McLean, Macon, Macoupin, Marshall, Mason, Menard, Montgomery, Morgan, Moultrie, Peoria, Piatt, Pike, Sangamon, Schuyler, Scott, Shelby, Stark, Tazewell, Vermillion Warren, Woodford; South IL Counties = Alexander, Clay, Clinton, Edwards, Franklin, Gallatin, Hamilton, Hardin, Jackson, Jefferson, Johnson, Lawrence, Marion, Massac, Monroe, Perry, Pope, Pulaski, Randolph, Richland, Saline, Union, Wabash, Washington, Wayne, White, Williamson; North, IL Counties = Boone, Bureau, Carroll, DeKalb, Grundy, Henry, Jo-Daviess, Kankakee, Kendall, LaSalle, Lee, Mercer, Ogle, Putnam, Rock Island, Stephenson, Whiteside, Winnebago; Other = Out of State

Offense Class	Institutions		Aftercare	
	Number	Percent	Number	Percent
Murder	25	13.2%	3	1.1%
Class X Felony	53	28.0%	77	28.1%
Class 1 Felony	40	21.2%	58	21.2%
Class 2 Felony	40	21.2%	98	35.8%
Class 3 Felony	22	11.6%	15	5.5%
Class 4 Felony	9	4.8%	11	4.0%

Offense Class by Race	Black	White	Hispanic	Bi/Multiracial
Murder	20	3	5	0
Class X Felony	100	19	10	1
Class 1 Felony	76	11	6	5
Class 2 Felony	79	34	19	6
Class 3 Felony	19	9	3	6
Class 4 Felony	14	5	0	1
Total	308	81	43	19

This table provides a summary of all youth in DJJ (both facilities and Aftercare) relating to their race and holding offense crime class. The numbers in the table and the raw number of youth in a category.

Prefix	Institutions		Aftercare	
	Number	Percent	Number	Percent
Court Evaluation	6	3.2%	1	0.4%
Delinquent	77	40.7%	228	83.2%
Extended Jurisdiction	7	3.7%	11	4.0%
Felon	65	34.4%	4	1.5%
First Degree Murderer	12	6.3%	3	1.1%
Habitual Juvenile	8	4.2%	0	0%
Violent Juvenile	14	7.4%	15	5.5%
From Other State	0	0%	12	4.4%

Aftercare Completion – November 2024

Characteristics of Youth Exiting Aftercare

Youth exiting aftercare are youth that are being discharged from IDJJ custody and youth that are entering an IDJJ facility

Sex	Aftercare Exits	
	Number	Percent
Male	34	100%
Female	0	0%

Age	Aftercare Exits	
	Number	Percent
Average Age	18.1	
16 & Under	5	14.7%
17 to 20	28	82.4%
20.5 & Over	1	2.9%

Committing Counties ²	Aftercare Exits	
	Number	Percent
Cook	9	26.5%
Collar Counties	4	11.8%
Metro-East	1	2.9%
Central	10	29.4%
Southern	3	8.8%
Northern	5	14.7%
Out of State	2	5.9%

Race/Ethnicity	Aftercare Exits	
	Number	Percent
White	4	11.8%
Black	27	79.4%
Hispanic	3	8.8%
Asian/Pacific Islander	0	0%
Multi/Biracial	0	0%

² Committing Counties: Cook = Cook; Collar Counties = DuPage, Kane, Lake, McHenry, Will; Metro East Counties = Madison, St. Clair; Central IL Counties = Adams, Bond, Brown, Calhoun, Cass, Champaign, Christian, Clark, Coles, Crawford, Cumberland, Dewitt, Douglas, Edgar, Effingham, Fayette, Ford, Fulton, Greene, Hancock, Henderson, Iroquois, Jasper, Jersey, Knox, Livingston, Logan, McDonough, McLean, Macon, Macoupin, Marshall, Mason, Menard, Montgomery, Morgan, Moultrie, Peoria, Piatt, Pike, Sangamon, Schuyler, Scott, Shelby, Stark, Tazewell, Vermillion Warren, Woodford; South IL Counties = Alexander, Clay, Clinton, Edwards, Franklin, Gallatin, Hamilton, Hardin, Jackson, Jefferson, Johnson, Lawrence, Marion, Massac, Monroe, Perry, Pope, Pulaski, Randolph, Richland, Saline, Union, Wabash, Washington, Wayne, White, Williamson; North, IL Counties = Boone, Bureau, Carroll, DeKalb, Grundy, Henry, Jo-Daviess, Kankakee, Kendall, LaSalle, Lee, Mercer, Ogle, Putnam, Rock Island, Stephenson, Whiteside, Winnebago; Other = Out of State

Offense Class	Aftercare Exits	
	Number	Percent
Murder	0	0%
Class X Felony	5	14.7%
Class 1 Felony	9	26.5%
Class 2 Felony	11	32.4%
Class 3 Felony	4	11.8%
Class 4 Felony	3	8.8%

Prefix	Aftercare Exits	
	Number	Percent
Court Evaluation	0	0%
Delinquent	25	73.5%
Extended Jurisdiction	0	0%
Felon	5	14.7%
First Degree Murderer	0	0%
Habitual Juvenile	2	5.9%
Violent Juvenile	0	0%
From Other State	2	5.9%

Discharge Reason	Aftercare Exits	
	Number	Percent
Admitted to Institution	10	29.4%
Aftercare Discharge	12	35.3%
Adult Sentence Discharge	8	23.5%
Transfer to Adult Parole	1	2.9%
Court Ordered Discharge	0	0%
Discharged from Illinois Custody	2	5.9%
Statutory Discharge	1	2.9%
Death	0	0%
Vacated Commitment Order	0	0%
Expiration of Sentence	0	0%

Youth Admitted to Institutions	Aftercare Exits	
	Number	Percent
Technical Violators	4	40%
New Commitments	6	60%

Youth Outcomes at Discharge from Aftercare – November 2024

These are youth outcomes are for youth discharging Aftercare

