



**Monthly Report:
August 2022**

FY2023

Section 1: Population and Staffing Data

Table 1a: Population by Facility

	1/22	2/22	3/22	4/22	5/22	6/22	7/22	8/22
Chicago	12	16	22	26	26	25	22	27
Harrisburg	39	46	48	54	58	64	52	55
Pere Marquette	8	10	14	11	10	6	10	12
St. Charles	30	32	32	44	43	43	40	43
Warrenville	18	15	20	20	21	24	23	24
IDJJ Total	107	119	136	155	158	162	147	161

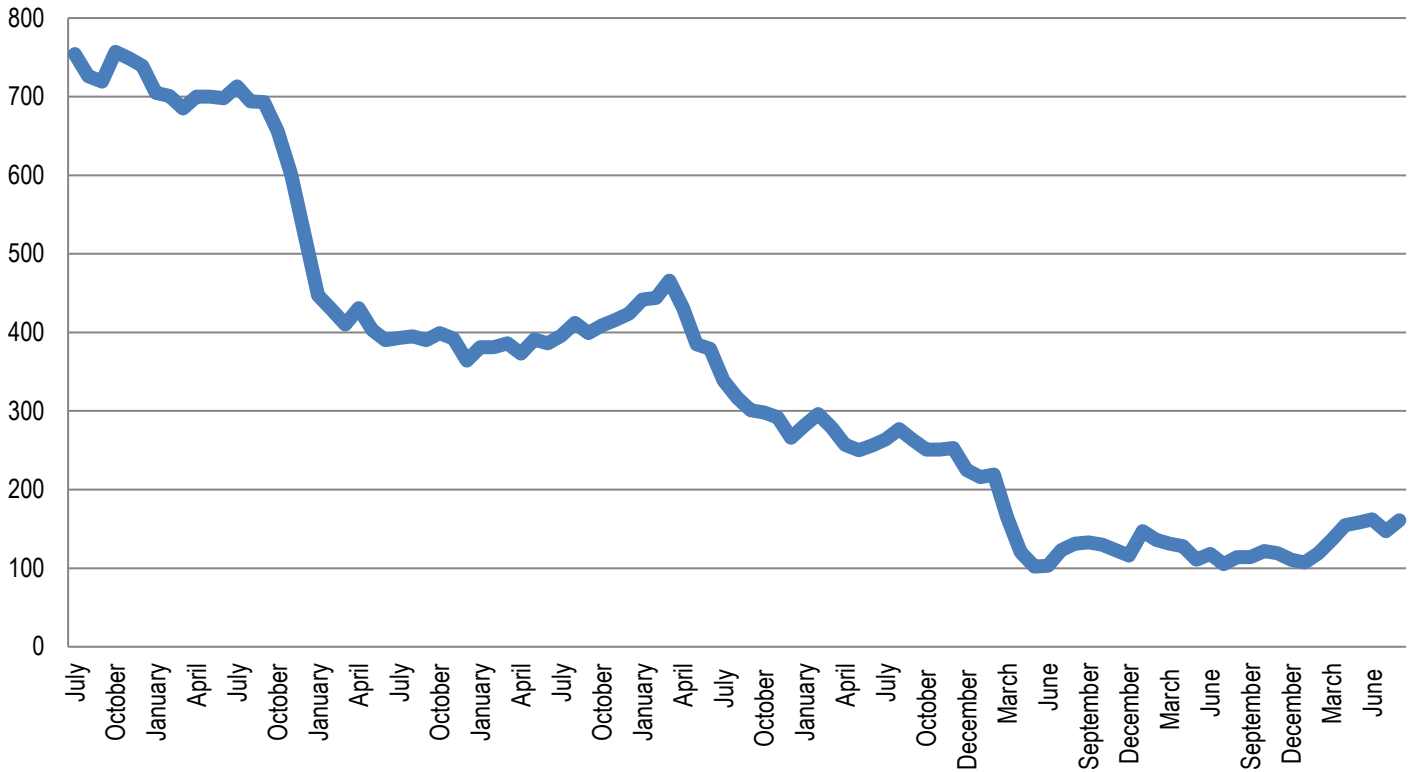
Table 1b: Average Daily Population by Facility

	1/22	2/22	3/22	4/22	5/22	6/22	7/22	8/22
Chicago	12.5	14.9	18.1	24.6	26.3	24.6	24.8	24.2
Harrisburg	35.3	44.0	45.1	48.2	55.1	63.7	59.2	55.6
Pere Marquette	8.9	8.4	12.3	12.3	9.5	7.7	7.6	10.2
St. Charles	27.1	32.8	29.9	39.1	45.2	41.6	41.0	39.4
Warrenville	20.4	17.1	17.7	20.2	18.5	23.1	24.7	25.4
IDJJ Total	104.1	117.3	123.2	144.5	154.5	160.6	157.4	154.8

Table 2: Security Staff Headcount by Facility

	1/22	2/22	3/22	4/22	5/22	6/22	7/22	8/22
Chicago	65	65	65	66	64	65	61	60
Harrisburg	118	116	112	112	112	118	114	111
Pere Marquette	36	36	34	32	33	36	34	34
St. Charles	110	113	107	100	99	94	94	93
Warrenville	59	62	61	62	60	58	57	58
IDJJ Total	388	392	379	372	368	371	360	356

Chart 1: Facility Populations on Last Day of Month Last Eight Fiscal Years



Section 2: Mental Health Data

Table 5: Percent of Youth Psychotropic Medication

	1/22	2/22	3/22	4/22	5/22	6/22	7/22	8/22
Chicago	82.4%	65%	85.7%	70.0%	75.0%	68.4%	64.2%	62.9%
Harrisburg	53.6%	66.7%	40.0%	71.2%	62.8%	69.4%	65.7%	65.8%
Pere Marquette	77.8%	70%	44.4%	42.9%	66.7%	84.6%	68.2%	61.5%
St. Charles	42.9%	48.1%	40.9%	63.5%	43.5%	55.9%	49.5%	54.7%
Warrenville	66.7%	72%	72.7%	52.0%	50.0%	60.7%	71%	58.6%
IDJJ Average	57.4%	62.6%	52.2%	64.4%	57.5%	65.1%	61.1%	60.7%

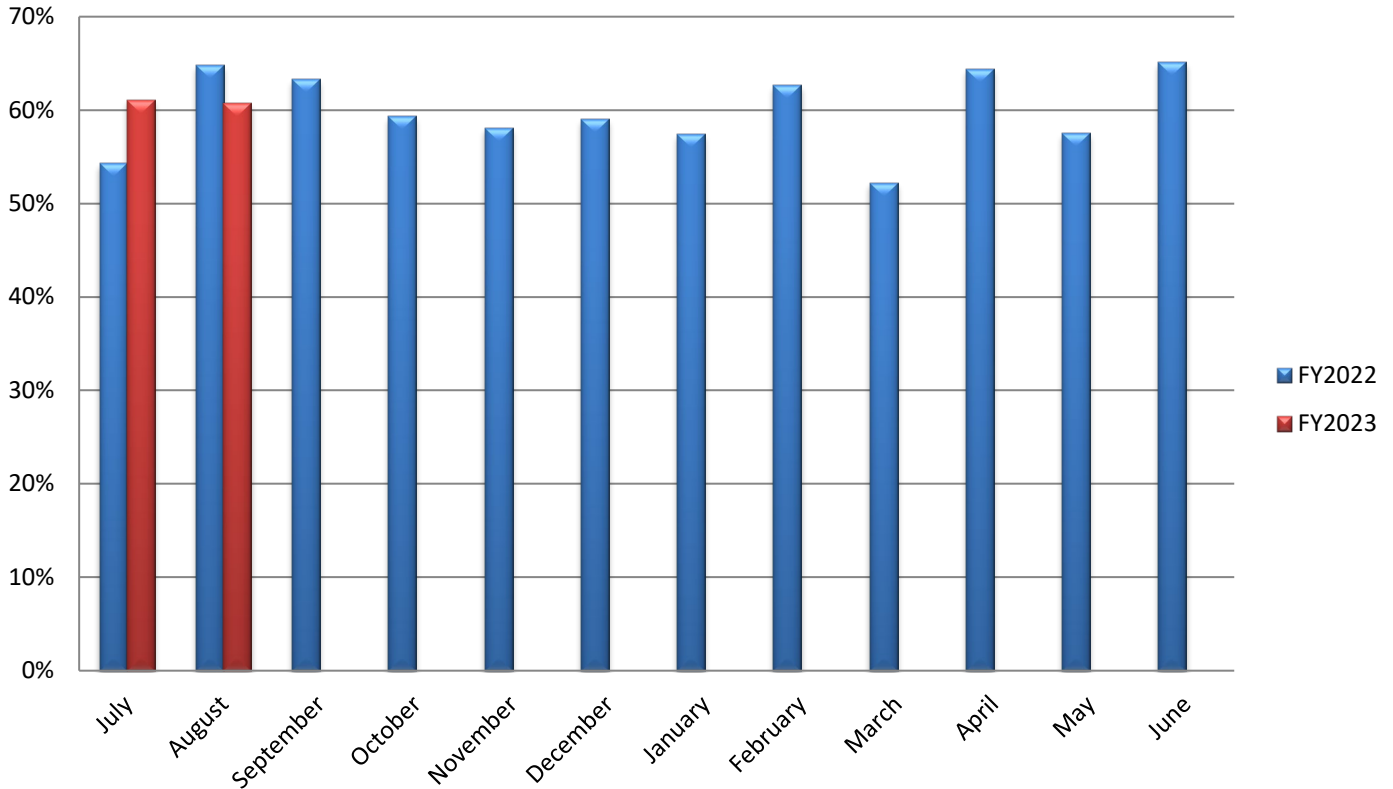
Table 7: Distribution of Mental Health Levels

	Mental Health Level 0	Mental Health Level 1	Mental Health Level 2	Mental Health Level 3	Mental Health Level 3.5	Mental Health Level 4
January	0.0%	34.7%	62.9%	2.4%	0.0%	0.0%
February	0.0%	35.2%	62.1%	2.8%	0.0%	0.0%
March	0.0%	35.2%	61.0%	3.8%	0.0%	0.0%
April	0.0%	31.3%	64.4%	4.3%	0.0%	0.0%
May	0.0%	30.9%	66.1%	3.0%	0.0%	0.0%
June	1.2%	34.1%	62.4%	2.3%	0.0%	0.0%
July	0.0%	33.6%	63.3%	3.1%	0.0%	0.0%
August	0.6%	33.0%	63.7%	2.8%	0.0%	0.0%
IDJJ Average	0.2%	33.5%	63.2%	3.1%	0.0%	0.0%

Table 8: Distribution of DSM V Diagnoses

	Youth with No Diagnosis	Youth with One Diagnosis	Youth with Two Diagnoses	Youth with Three Diagnoses	Youth with Four or More Diagnoses
January	0.00%	6.61%	13.22%	22.31%	57.85%
February	0.00%	2.07%	13.10%	17.24%	67.59%
March	0.00%	4.20%	16.08%	15.38%	64.34%
April	0.00%	2.47%	9.26%	16.05%	72.22%
May	0.00%	1.90%	10.13%	24.05%	63.92%
June	0.00%	2.92%	12.28%	23.98%	60.82%
July	0.00%	2.54%	13.20%	20.90%	63.36%
August	1.73%	1.16%	9.25%	23.69%	64.16%
IDJJ Average	0.22%	2.98%	12.07%	20.45%	64.28%

Chart 3: Percent of Youth on Psychotropic Medication



Section 3: Substance Abuse Treatment Data

Table 9: Number of Treatment Participants

	1/22	2/22	3/22	4/22	5/22	6/22	7/22	8/22
Chicago	8	10	7	6	3	7	7	7
Harrisburg	8	17	18	12	15	16	15	13
Pere Marquette	9	10	17	0	0	6	8	9
St. Charles	4	6	4	6	5	5	6	6
Warrenville	8	8	3	3	3	2	5	6
IDJJ Total	37	51	49	27	26	36	41	41

Table 10: Average Length of Stay for Completers

	1/22	2/22	3/22	4/22	5/22	6/22	7/22	8/22
Chicago	131	126	133	123	97	-	150	-
Harrisburg	89	-	53	55	86	94	78	53
Pere Marquette	78	-	-	-	-	145	-	-
St. Charles	-	93	-	-	65	161	15	-
Warrenville	-	137	-	-	-	-	-	-
IDJJ Average	90	121	58	75	78	110	84	53

Table 11: Percent of Discharges by Reason

	1/22	2/22	3/22	4/22	5/22	6/22	7/22	8/22
Successful Completion	42.9%	33.3%	61.5%	50%	75%	50%	33.3%	30%
Behavioral Discharge	14.3%	8.3%	0%	8.3%	0%	12.5%	0%	10%
Youth Released	28.6%	50%	23.1%	25%	12.5%	25%	44.4%	60%
Other Discharge	14.3%	8.3%	15.4%	16.7%	12.5%	12.5%	22.2%	0%

Table 12: Primary Substance Abused

	1/22	2/22	3/22	4/22	5/22	6/22	7/22	8/22
Marijuana	73%	72.5%	65.3%	59.3%	68%	64%	68%	75.6%
Alcohol	10.8%	11.8%	14.3%	14.8%	16%	12.3%	10.6%	2.4%
Other Drugs	16.2%	15.7%	16.3%	25.9%	16%	23.6%	20.4%	22.0%
No Diagnosis	0%	0%	4.1%	0%	0%	0%	0%	0%

For the youth whose primary substance abuse is not specified, 1 reported opioids, 1 reported benzodiazepines, 6 reported amphetamines and 1 reported hallucinogenics.

Chart 5: Number of Treatment Participants by Facility

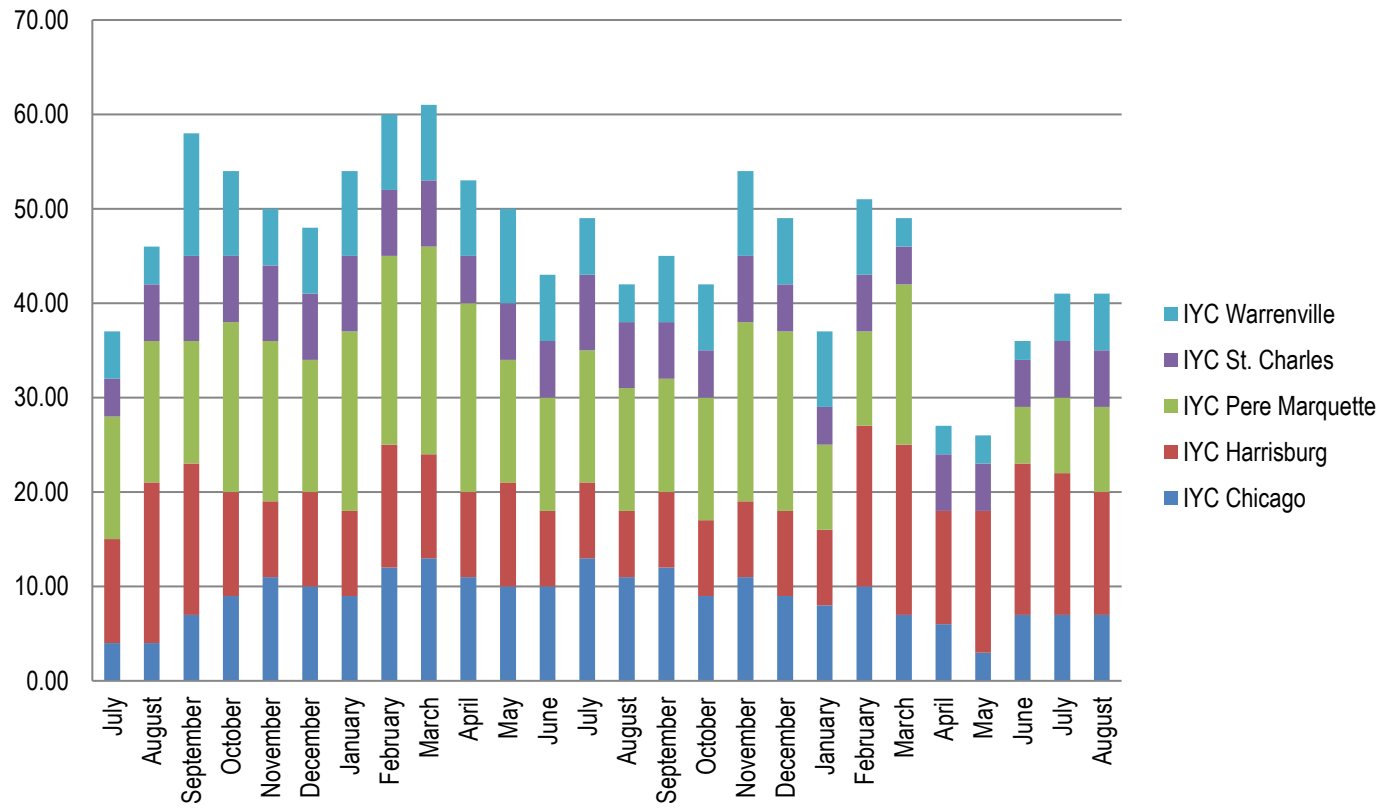
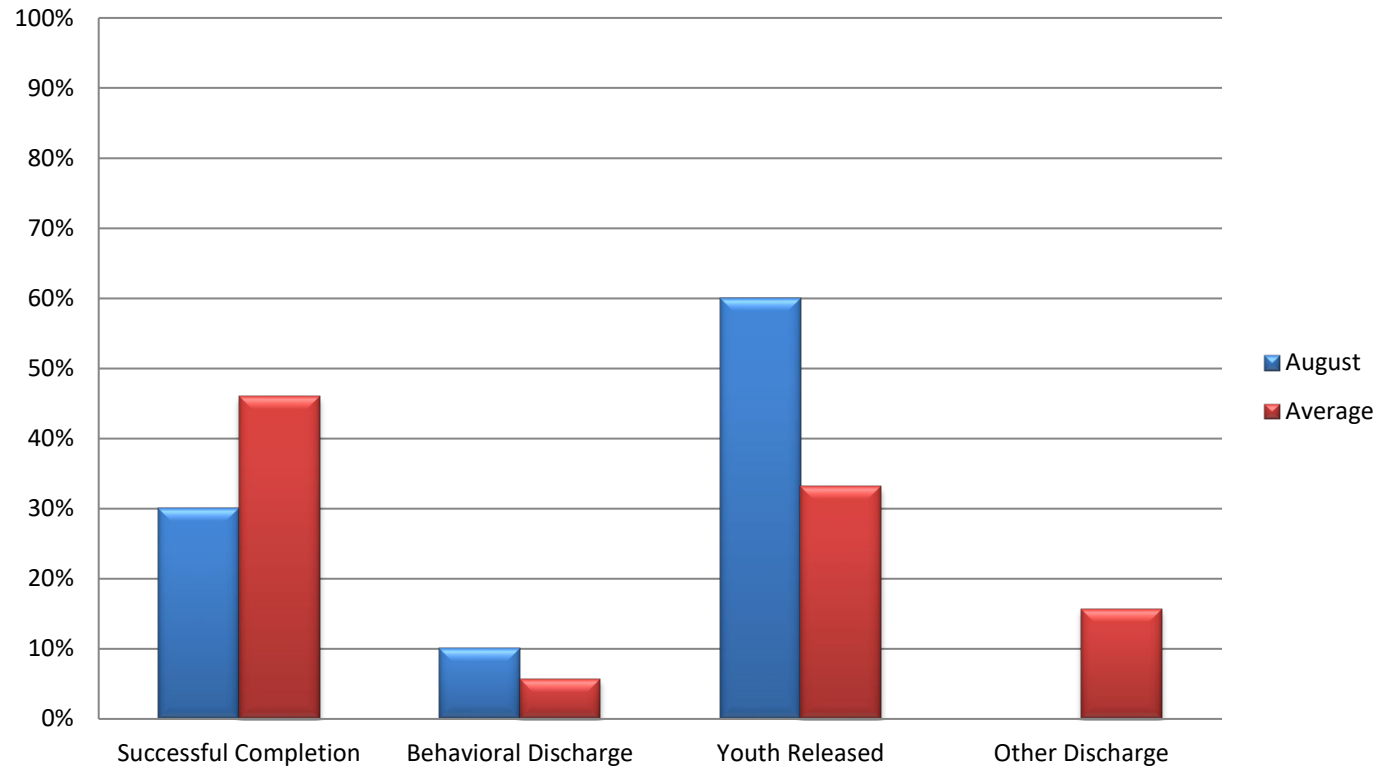


Chart 6: Discharges by Reason



Section 4: Education Data

Table 13: Students Enrolled in School

	1/22	2/22	3/22	4/22	5/22	6/22	7/22	8/22
Chicago	8	11	14	19	16	18	18	
Harrisburg	26	43	43	45	47	52	41	
Pere Marquette	5	5	9	8	7	2	4	
St. Charles	19	14	11	23	32	26	22	
Warrenville	12	9	20	8	5	15	14	
IDJJ Total	70	82	97	103	107	113	99	

Table 14: Teachers Employed

	1/22	2/22	3/22	4/22	5/22	6/22	7/22	8/22
Chicago	7	7	7	7	7	7	7	
Harrisburg	13	13	13	13	13	12	12	
Pere Marquette	6	6	6	6	5	5	5	
St. Charles	4	4	4	4	4	4	5	
Warrenville	4	3	2	2	2	2	3	
IDJJ Total	34	33	32	32	31	30	32	

Table 15: General Education Student to Teacher Ratio

	1/22	2/22	3/22	4/22	5/22	6/22	7/22	8/22
Chicago	0.5	0.3	0.6	1.2	1.4	1.6	2.0	
Harrisburg	1.1	1.4	1.4	1.4	1.4	1.4	1.4	
Pere Marquette	0.6	0.7	1.0	1.7	1.7	0.3	0.7	
St. Charles	4.7	3.3	4.0	4.7	5.3	4.7	2.7	
Warrenville	2.7	1.3	2.0	1.5	1.0	5.0	5.0	
IDJJ Average	1.5	1.2	1.6	1.9	2.0	2.2	2.0	

Table 16: Special Education Student to Teacher Ratio

	1/22	2/22	3/22	4/22	5/22	6/22	7/22	8/22
Chicago	5.0	9.0	11.0	13.0	9.0	10.0	8.0	
Harrisburg	5.3	7.3	7.3	7.3	7.3	7.3	7.3	
Pere Marquette	2.0	3.0	6.0	2.5	2.5	0.5	1.0	
St. Charles	5.0	4.0	8.0	9.0	16.0	12.0	14.0	
Warrenville	8.0	-	-	-	-	-	4.0	
IDJJ Average	2.8	7.1	8.7	7.6	7.8	7.1	6.3	

According to the *RJ Consent Decree*, DJJ is required to have general education student to teacher ratios of 10 youth to 1 teacher and special education student to teacher ratios of 6 youth to 1 teacher. No School District data has been received for August. Reports will be updated as data becomes available.

Table 17: Overall Diplomas Awarded

	1/22	2/22	3/22	4/22	5/22	6/22	7/22	8/22	Total
Chicago	1	0	1	2	2	1	1		8
Harrisburg	0	1	4	4	6	2	2		19
Pere Marquette	0	1	4	0	1	2	2		10
St. Charles	1	1	2	0	0	2	2		8
Warrenville	1	2	0	0	0	0	1		4
IDJJ Total	3	4	10	6	9	7	9		48

Table 18: Percent of Special Education Students

	1/22	2/22	3/22	4/22	5/22	6/22	7/22	8/22
Chicago	62.5%	81.8%	78.6%	68.4%	56.3%	55.6%	44.4%	
Harrisburg	80.7%	67.4%	67.4%	64.4%	61.7%	55.8%	70.7%	
Pere Marquette	40.0%	60.0%	66.7%	62.5%	71.4%	50.0%	50%	
St. Charles	26.3%	28.6%	40.0%	39.1%	50%	46.2%	63.6%	
Warrenville	66.7%	55.6%	63.6%	62.5%	60%	33.3%	28.6%	
IDJJ Total	31.4%	60.9%	62.9%	59.2%	57.9%	50.4%	57.6%	

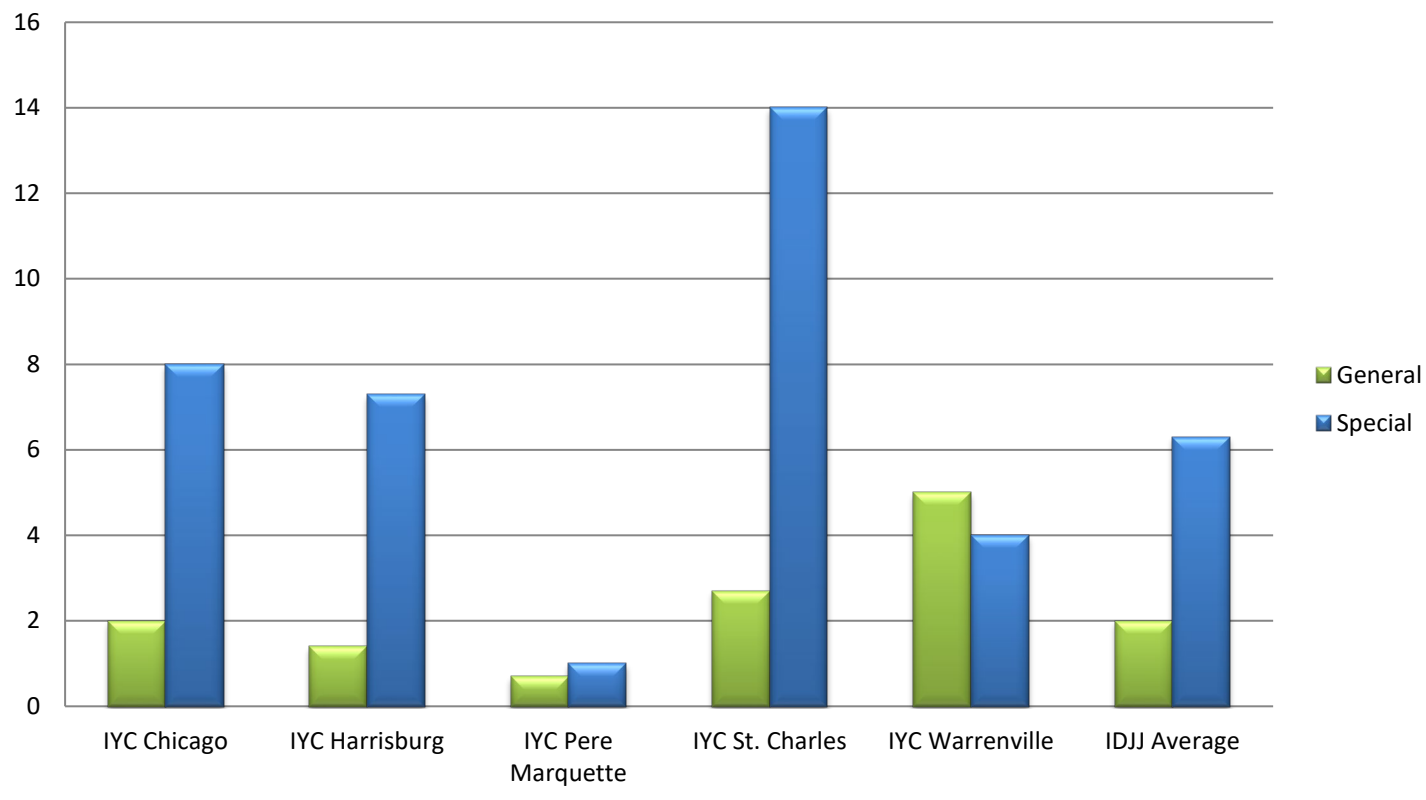
Table 20: Youth in Continuing Education

	Post-Secondary	Collegiate
IYC Chicago	0	0
IYC Harrisburg	0	11
IYC Pere Marquette	4	0
IYC St. Charles	0	2
IYC Warrenville	0	0
IDJJ Total	0	16

Table 21: Number and Percent of Cancelled Whole School Days

	Number	Percent
IYC Chicago	0	0%
IYC Harrisburg	0	0%
IYC Pere Marquette	0	0%
IYC St. Charles	0	0%
IYC Warrenville	0	0%
IDJJ Total	0	0%

Chart 7: Student to Teacher Ratio by Facility



Section 5: Reportable Incident Data

Table 21a: Number of Reportable Incidents

	1/22	2/22	3/22	4/22	5/22	6/22	7/22	8/22
Chicago	5	3	6	10	12	4	4	8
Harrisburg	15	40	32	41	36	36	27	21
Pere Marquette	1	0	8	5	4	2	13	2
St. Charles	9	2	7	7	30	15	7	9
Warrenville	12	4	14	24	6	1	8	13
IDJJ Total	42	49	67	87	88	58	59	53

Table 21b: Rate of Reportable Incidents per 100 Youth

	1/22	2/22	3/22	4/22	5/22	6/22	7/22	8/22	Avg.
Chicago	40	20.1	33.1	40.7	45.6	16.3	16.1	33.1	30.6
Harrisburg	42.5	90.9	70.9	85.1	65.3	56.5	45.6	37.8	61.8
Pere Marquette	11.2	0	65.0	40.7	42.1	25.9	171.1	19.6	47.0
St. Charles	33.2	6.1	23.4	17.9	66.4	36.1	17.1	22.8	27.9
Warrenville	58.8	23.4	79.1	118.8	32.4	4.3	32.4	51.2	50.0
IDJJ Average	40.3	41.8	54.4	60.2	57.0	36.1	37.5	34.2	45.2

Table 22a: Number of Youth on Youth Assaults

	1/22	2/22	3/22	4/22	5/22	6/22	7/22	8/22
Chicago	1	0	0	1	0	0	2	1
Harrisburg	3	16	10	18	18	7	6	11
Pere Marquette	0	0	3	0	1	0	4	1
St. Charles	3	1	0	0	4	1	2	3
Warrenville	4	2	4	8	0	0	3	7
IDJJ Total	11	19	17	27	23	8	17	23

Table 22b: Rate of Youth on Youth Assaults per 100 Youth

	1/22	2/22	3/22	4/22	5/22	6/22	7/22	8/22	Avg.
Chicago	8	0	0	4.1	0	0	8.1	4.1	3.0
Harrisburg	8.5	36.4	22.2	37.3	32.7	11.0	10.1	19.8	22.2
Pere Marquette	0	0	24.4	0	10.5	0	52.6	9.8	12.2
St. Charles	11.1	3.0	0	0	8.8	2.4	4.9	7.6	4.7
Warrenville	19.6	11.7	22.6	39.6	0	0	12.1	27.6	16.6
IDJJ Average	10.6	16.2	13.8	18.7	14.9	5.0	10.8	14.9	13.1

Table 23a: Number of Youth Fights

	1/22	2/22	3/22	4/22	5/22	6/22	7/22	8/22
Chicago	1	3	4	2	5	4	1	6
Harrisburg	10	19	21	17	17	26	18	6
Pere Marquette	0	0	2	4	3	0	4	1
St. Charles	4	1	4	5	18	7	3	6
Warrenville	1	0	3	10	4	0	4	5
IDJJ Total	16	23	34	38	47	39	30	24

Table 23b: Rate of Youth Fights per 100 Youth

	1/22	2/22	3/22	4/22	5/22	6/22	7/22	8/22	Avg.
Chicago	8	20.1	22.1	8.1	19.0	16.3	4.0	24.8	15.3
Harrisburg	28.3	43.2	46.6	35.3	30.9	40.8	30.4	10.8	33.3
Pere Marquette	0	0	16.3	32.5	31.6	0	52.6	9.8	17.9
St. Charles	14.8	3.0	13.4	12.8	39.8	16.8	7.3	15.2	15.4
Warrenville	4.9	0	16.9	49.5	21.6	0	16.2	19.7	16.1
IDJJ Average	15.4	19.6	27.6	26.3	30.4	24.3	19.1	15.5	22.3

Table 24a: Number of Youth on Staff Assaults

	1/22	2/22	3/22	4/22	5/22	6/22	7/22	8/22
Chicago	3	0	2	7	7	0	1	1
Harrisburg	2	5	1	6	1	3	3	4
Pere Marquette	1	0	3	1	0	2	5	0
St. Charles	2	0	3	2	8	7	2	0
Warrenville	7	2	7	6	2	1	1	1
IDJJ Total	15	7	16	22	18	13	12	6

Table 24b: Rate of Youth on Staff Assaults per 100 Youth

	1/22	2/22	3/22	4/22	5/22	6/22	7/22	8/22	Avg.
Chicago	24	0	11.0	28.5	26.6	0	4.0	4.1	12.3
Harrisburg	5.7	11.4	2.2	14.4	1.8	4.7	5.1	7.2	6.6
Pere Marquette	11.2	0	24.4	8.1	0	26.0	65.8	0	16.9
St. Charles	7.4	0	10.0	5.1	17.7	16.8	4.9	0	7.7
Warrenville	34.3	11.7	39.5	29.7	10.8	4.3	4.0	3.9	17.3
IDJJ Average	14.4	6.0	13.0	15.2	11.7	8.1	7.6	3.9	10.0

Chart 9: Rate of Reportable Incidents Per 100 Youth

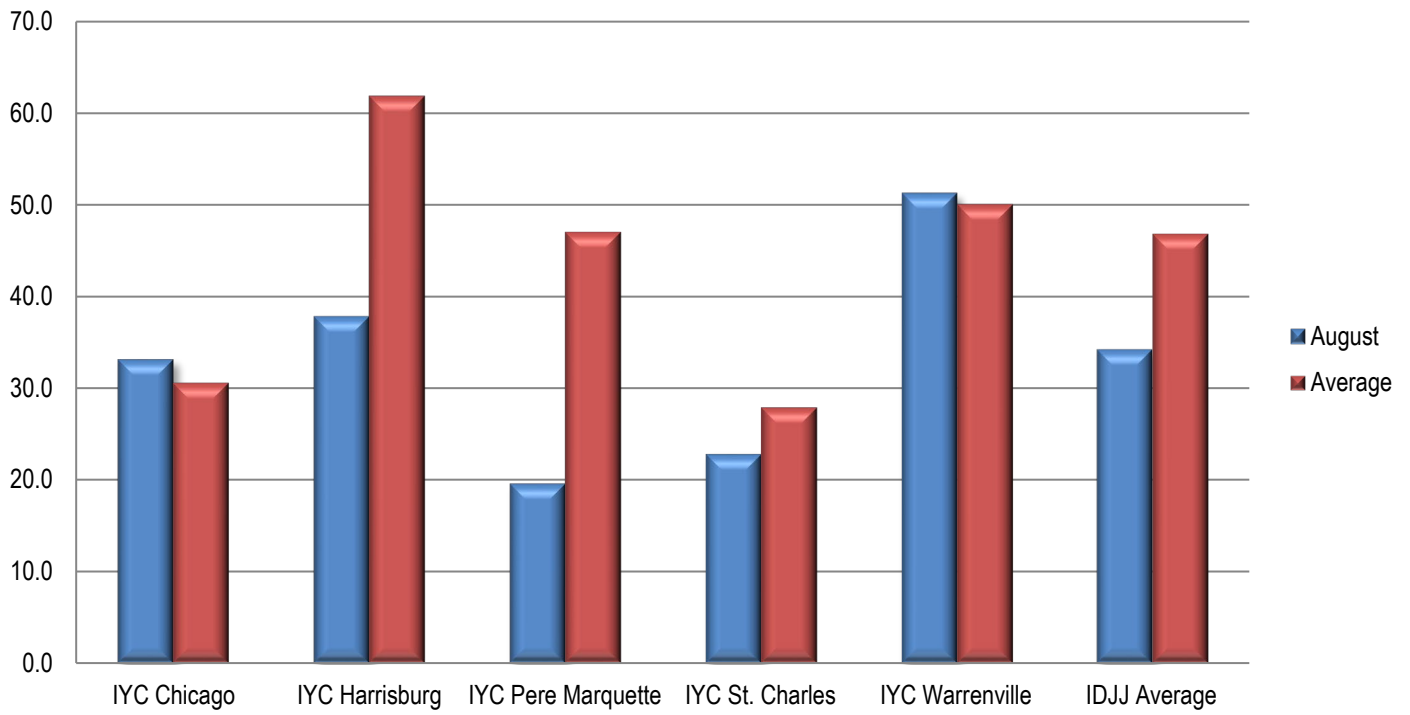
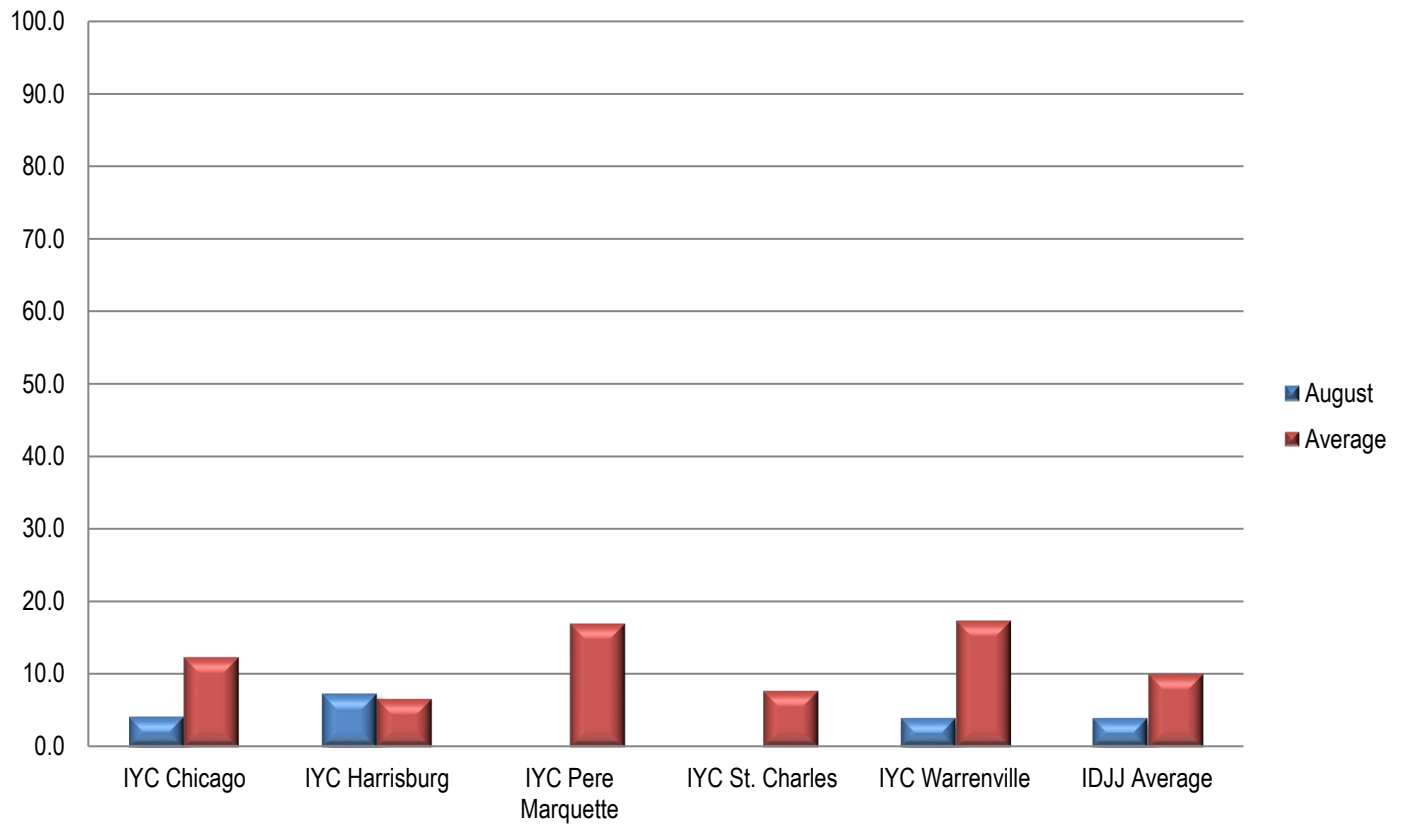


Chart 10: Rate of Youth on Staff Assault Per 100 Youth



Section 6: Indicator Data

Table 25: Uses of Chemical Restraints

	1/22	2/22	3/22	4/22	5/22	6/22	7/22	8/22
Chicago	0	0	0	0	2	0	0	0
Harrisburg	0	0	0	0	0	0	2	1
Pere Marquette	0	0	0	0	0	0	0	0
St. Charles	0	0	1	2	1	2	2	1
Warrenville	0	0	0	1	0	1	0	1
IDJJ Total	0	0	1	3	3	3	4	3

Table 26: Uses of Mechanical Restraints

	1/22	2/22	3/22	4/22	5/22	6/22	7/22	8/22
Chicago	2	1	1	9	8	2	0	3
Harrisburg	5	4	8	11	3	14	16	14
Pere Marquette	2	0	1	1	2	1	1	0
St. Charles	3	0	1	4	17	7	5	2
Warrenville	8	3	4	9	2	2	5	10
IDJJ Total	20	8	15	34	32	26	27	29

Uses of chemical and mechanical restraints have varied throughout the year, although the use in the current year is much lower than years past. Numbers and rates of uses of restraints should be related to population size and number and types of incidents. More important than how frequent they are is whether they are used according to policy and for appropriate reasons.

Section 7: Confinement Information

Table 28a: Use of Behavioral Holds

	1/22	2/22	3/22	4/22	5/22	6/22	7/22	8/22
Chicago	0	1	1	17	31	16	4	17
Harrisburg	25	85	76	57	28	64	71	55
Pere Marquette	2	0	3	3	1	1	3	0
St. Charles	38	13	12	37	98	56	45	33
Warrenville	36	20	36	60	36	16	33	57
IDJJ Total	118	119	128	174	194	153	156	162

Table 28b: Rate of Behavioral Hold

	1/22	2/22	3/22	4/22	5/22	6/22	7/22	8/22
Chicago	0	7	6	69	118	65	16	70
Harrisburg	71	193	169	118	51	100	120	99
Pere Marquette	22	0	24	24	11	13	39	0
St. Charles	140	40	40	95	217	135	110	84
Warrenville	176	117	203	297	195	69	134	224
IDJJ Average	113	101	104	120	126	95	99	105

Table 28c: Average Length of Behavioral Hold

	1/22	2/22	3/22	4/22	5/22	6/22	7/22	8/22
Chicago	-	135	1680	130	203	108	107	113
Harrisburg	135	140	106	114	115	130	152	152
Pere Marquette	58	-	27	59	87	225	81	-
St. Charles	172	75	98	95	117	147	78	140
Warrenville	94	69	85	103	94	107	109	102
IDJJ Average	134	121	110	107	126	132	119	128

Table 29: Use of Crisis Care

	1/22	2/22	3/22	4/22	5/22	6/22	7/22	8/22
Chicago	1	-	-	-	-	-	-	-
Harrisburg	-	-	-	2	-	-	-	1
Pere Marquette	3	-	-	1	-	-	-	-
St. Charles	-	-	-	-	1	2	1	-
Warrenville	1	1	-	1	1	-	5	6
IDJJ Total	5	1	0	4	2	2	6	7

Table 30: Use of Medical Hold

	1/22	2/22	3/22	4/22	5/22	6/22	7/22	8/22
Chicago	-	-	-	-	1	-	-	-
Harrisburg	-	-	-	-	-	-	-	-
Pere Marquette	-	-	-	-	-	-	-	-
St. Charles	10	15	11	20	15	28	21	21
Warrenville	5	-	-	-	1	-	-	3
IDJJ Average	15	15	11	20	17	28	21	24

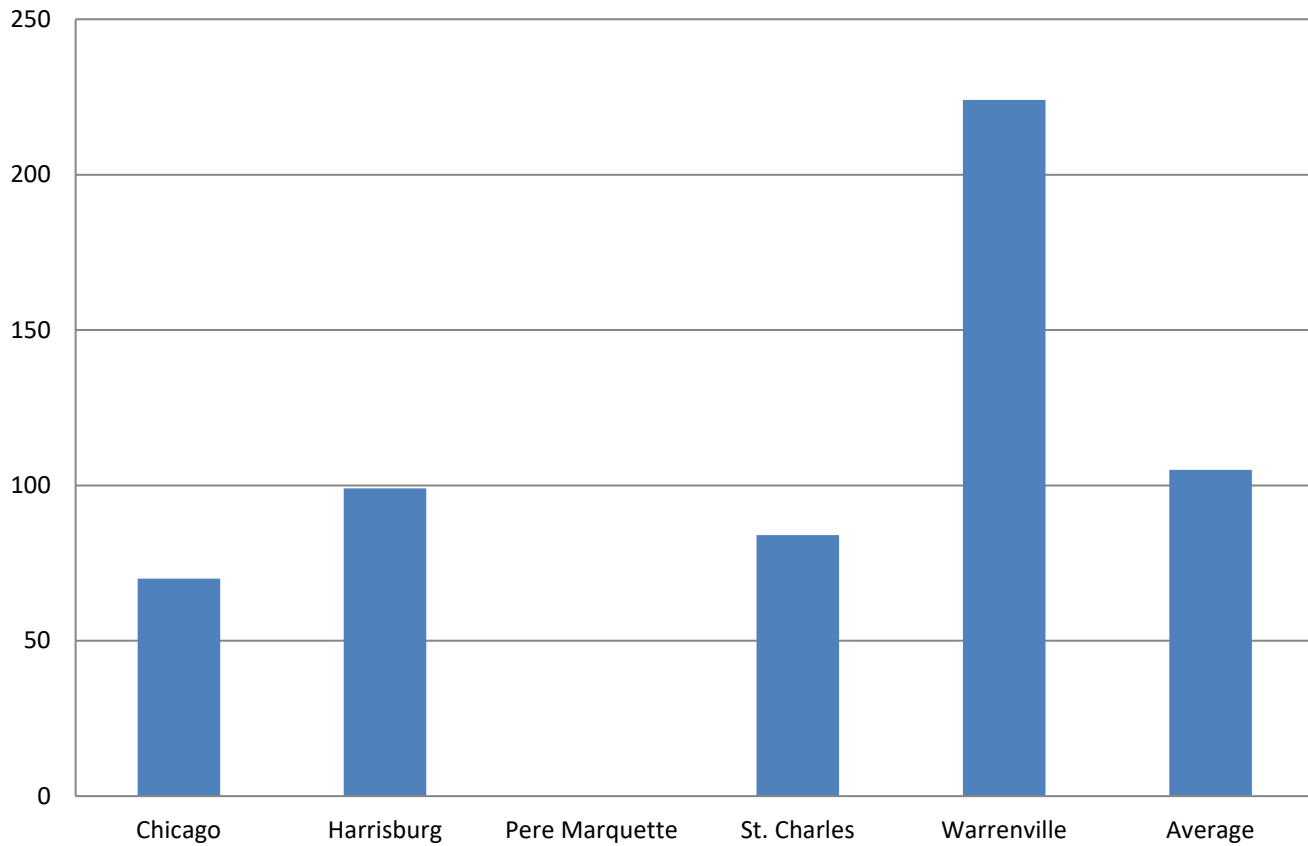
Table 31: Use of Administrative Hold

	1/22	2/22	3/22	4/22	5/22	6/22	7/22	8/22
Chicago	-	-	-	-	-	8	-	-
Harrisburg	-	-	-	-	-	-	-	-
Pere Marquette	-	-	1	-	-	-	-	-
St. Charles	-	-	-	-	-	-	-	-
Warrenville	-	-	-	-	9	-	21	-
IDJJ Total	0	0	1	0	9	8	21	0

Table 32: Use of Investigative Status

	1/22	2/22	3/22	4/22	5/22	6/22	7/22	8/22
Chicago	-	-	-	-	-	-	-	-
Harrisburg	-	-	-	-	-	-	-	-
Pere Marquette	-	-	-	1	-	-	-	-
St. Charles	-	-	-	-	-	-	-	-
Warrenville	-	-	-	-	-	-	4	-
IDJJ Total	0	0	0	1	0	0	4	0

Chart 12: Rate per 100 youth of Behavioral Holds



Section 8: Aftercare Data

Table 33: Youth Monitored by Aftercare

	1/22	2/22	3/22	4/22	5/22	6/22	7/22	8/22
Total Number of Youth Assigned to Aftercare	386	385	380	393	365	393	383	385
Youth in Community	181	178	155	157	140	159	156	149
Youth in Facilities	78	88	105	118	114	120	111	116
Youth with Pending Criminal Cases	119	111	105	105	100	130	103	103
Youth with Warrants and Out of State	8	8	15	13	11	11	13	17

Table 34: Caseloads in Aftercare (Average per Specialist)

	1/22	2/22	3/22	4/22	5/22	6/22	7/22	8/22
Youth Assigned to Specialist	6.2	6.6	6.0	6.4	5.9	6.2	6.2	5.8
Youth in Community	4.3	4.2	3.6	3.7	3.3	3.6	3.6	3.2
Youth in Facilities	1.9	2.4	2.4	2.7	2.6	2.7	2.6	2.6

Table 35: Average Specialist Caseload by Aftercare Office – August 2022

	Number of Specialists	Number of Youth	Average Caseload	Number of Youth in Community	Average Caseload in Community
Chicago	8	17	4.8	21	2.6
Chicago Heights	4	5	3.8	10	2.5
Aurora	2	2	3.5	5	2.5
Rockford	4	6	4	10	2.5
Peoria	4	13	6.5	13	3.3
Belleville	7	11	5	24	3.4
Champaign	4	20	10.5	22	5.5
Springfield	3	6	6	12	4
Placement	7	22	5.7	18	2.6
Intensive	3	14	9.	14	4.7
IDJJ Total	46	116	5.8	149	3.2

Table 36: Specialist Contact with Youth by Aftercare Office – August 2022

	Number of Overall Contacts	Contacts per Youth	Contacts with Youth in Community	Contacts per Youth in Community
Chicago	96	2.5	68	3.2
Chicago Heights	57	3.8	48	4.8
Aurora	27	3.9	25	5
Rockford	68	4.3	49	4.9
Peoria	97	3.7	75	5.8
Belleville	98	2.8	88	3.7
Champaign	118	2.8	92	4.2
Springfield	47	2.6	36	3
Placement	105	2.6	68	3.8
IDJJ Total	713	3.2	549	4.3

Table 37a: Parole Revocations

	Parole Revocations Heard	Revocations Approved	Revocations Denied	Hearings Continued
<i>January</i>	7	2	4	1
<i>February</i>	6	6	0	0
<i>March</i>	6	4	2	0
<i>April</i>	11	9	0	2
<i>May</i>	8	3	4	1
<i>June</i>	6	3	2	1
<i>July</i>	6	2	4	0
<i>August</i>	5	2	1	2
IDJJ Average	6.9	3.9	2.1	0.9

Table 37b: Parole Revocation Rates

	Percent of Revocations Approved	Percent of Revocations Denied	Percent of Hearings Continued
<i>January</i>	28.6%	57.1%	14.3%
<i>February</i>	100%	0%	0%
<i>March</i>	66.7%	33.3%	0%
<i>April</i>	81.8%	0%	18.2%
<i>May</i>	37.5%	50%	12.5%
<i>June</i>	50%	33.3%	16.7%
<i>July</i>	33.3%	66.7%	0.0%
<i>August</i>	40%	20%	40%
IDJJ Average	54.7%	32.6%	12.7%

With lower numbers of admission for technical parole violators, the numbers of parole revocation hearings held monthly has greatly decreased compared to previous years.

Section 9: Population Stock/Flow

Table 38: Institutional Stock/Flow

	1/22	2/22	3/22	4/22	5/22	6/22	7/22	8/22
Number of Admissions per Month	27	33	36	36	29	43	31	35
Percent of Admissions Parole Violators	11.1%	9.1%	15.6%	8.3%	20.7%	9.3%	12.9%	25.7%
Number of Facility Exits per Month	20	19	23	18	24	35	36	29
Percent of Exits to Aftercare Supervision	90%	89.5%	91.3%	83.3%	91.7%	97.1%	88.9%	93.1%

Table 39: Aftercare Stock/Flow

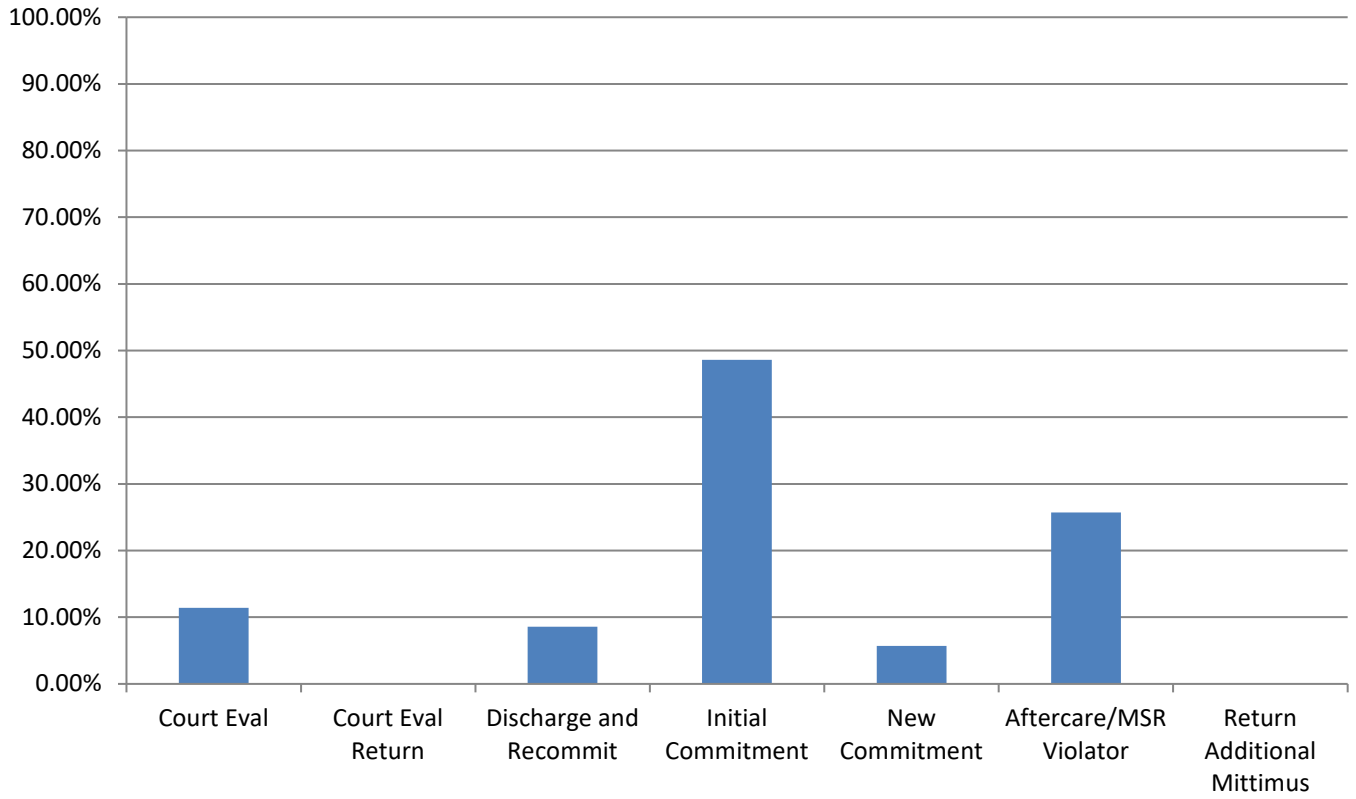
	1/22	2/22	3/22	4/22	5/22	6/22	7/22	8/22
Number of New Supervised Youth	18	19	25	16	23	35	32	27
Number of Exits from Aftercare	27	23	33	29	24	11	20	16

Table 40: Admissions to Facilities by Type

	August 2022	
	Number	Percent
Court Evaluation	4	11.4%
Court Evaluation Return	0	0%
Discharged and Recommitted	3	8.6%
Initial Commitment	17	48.6%
New Commitment	2	5.7%
Aftercare/MSR Violator	9	25.7%
Return Additional Mittimus	0	0%
Total	35	

The decrease in DJJ populations is a direct effect of both decreasing court admissions, decreasing admissions for technical violations, and decreases in length of stay during the fiscal year. Additionally, rates and numbers of discharges from Aftercare have increased as well, which has helped those numbers stay lower as well, which provides fewer youth to be readmitted into facilities. Looking at the types of admissions to DJJ, a greater percent of youth are initial commitments than in previous years.

Chart 13: Admission Types to Facility, August 2022



Section 10: TRD Data for August 2022

Table 41: Adjustments by Facility

	Reductions	Extensions
<i>IYC Chicago</i>	80	15
<i>IYC Harrisburg</i>	161	26
<i>IYC Pere Marquette</i>	46	7
<i>IYC St. Charles</i>	81	27
<i>IYC Warrenville</i>	89	9
Total	457	84

Table 42: Types of Adjustments Used

	CHI	HRG	PER	STC	WRV	DJJ Overall
<i>BARJ Reduction</i>	0	4	0	0	0	4
<i>Delinquent Program Reduction</i>	0	0	0	4	0	4
<i>Ed/Voc Reduction</i>	12	23	7	6	25	73
<i>Grade Level Reduction</i>	4	9	1	3	5	22
<i>JSO Completion Reduction</i>	0	0	0	0	0	0
<i>No Maj. Sanc. Reductions</i>	8	27	3	8	11	57
<i>Other Tx Reduction</i>	0	9	4	8	5	26
<i>SA Completion Reduction</i>	7	8	5	4	3	27
<i>YASI Goal Reduction</i>	49	81	26	48	40	244
<i>Discipline Extension</i>	15	26	7	27	9	84

Chart 14: Types of Adjustments used by Agency

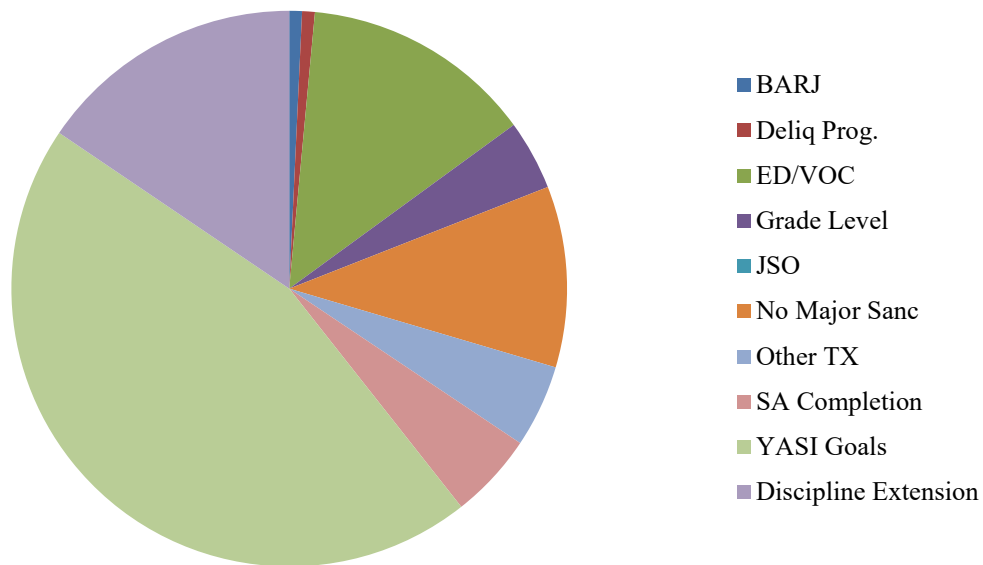


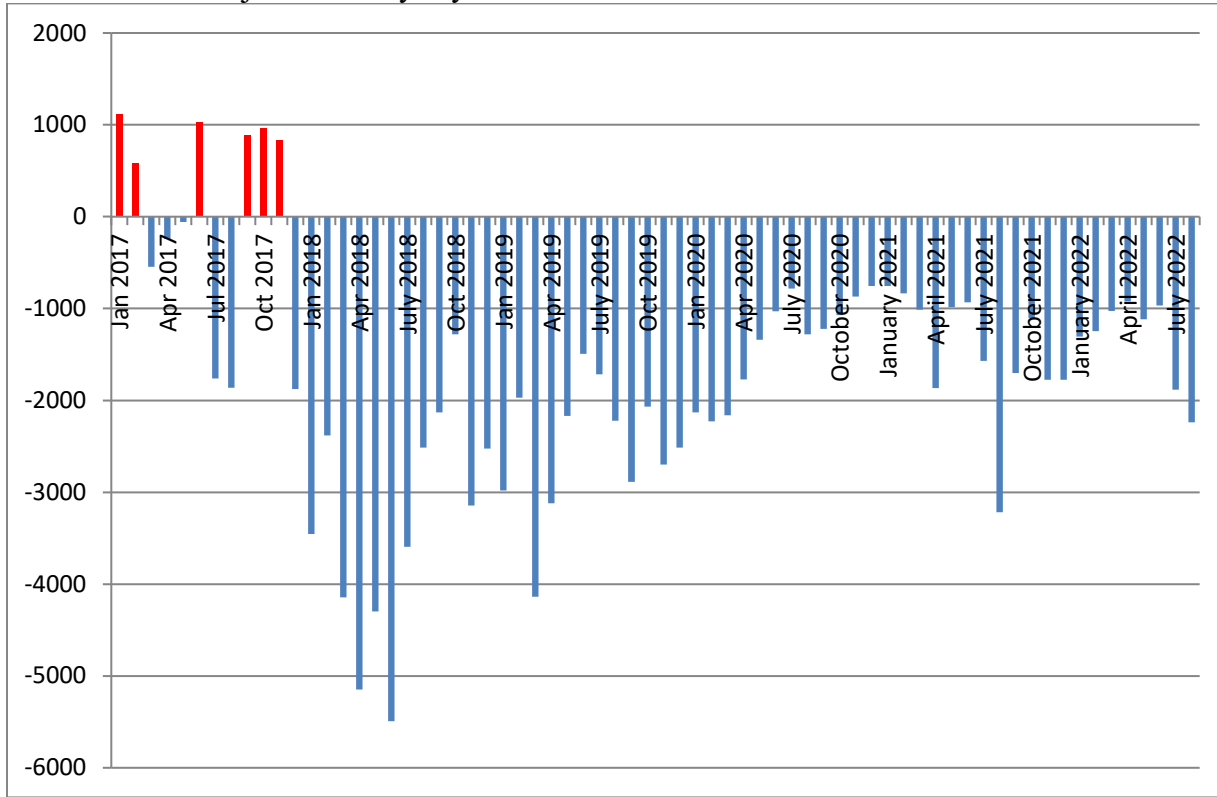
Table 45: Frequency of Discipline Extensions

	1/22	2/22	3/22	4/22	5/22	6/22	7/22	8/22
<i>IYC Chicago</i>	9	13	11	23	11	17	2	15
<i>IYC Harrisburg</i>	13	40	60	38	42	72	31	26
<i>IYC Pere Marquette</i>	3	1	6	4	2	4	0	7
<i>IYC St. Charles</i>	8	2	0	12	40	18	13	27
<i>IYC Warrenville</i>	7	2	3	18	5	1	3	9
Total	40	58	80	95	100	112	49	84

Table 46: Average Length of Discipline Extension

	1/22	2/22	3/22	4/22	5/22	6/22	7/22	8/22
<i>IYC Chicago</i>	3	5	4	5	8	9	16	5
<i>IYC Harrisburg</i>	5	7	7	8	8	9	14	11
<i>IYC Pere Marquette</i>	6	3	19	5	10	4	0	3
<i>IYC St. Charles</i>	15	14	-	5	21	18	10	13
<i>IYC Warrenville</i>	5	6	6	6	13	5	11	9
Average	7	7	7	7	14	11	12	10

Summed Total Adjustment Days by Month



Section 11: YASI

Table 47: YASI Pre-Screens: August 2022

	Legal Risk	Social Risk	Protective	Overall Risk
<i>High</i>	95	63	3	80
<i>Moderate</i>	13	44	54	31
<i>Low</i>	3	4	54	0
Total	111	111	111	111

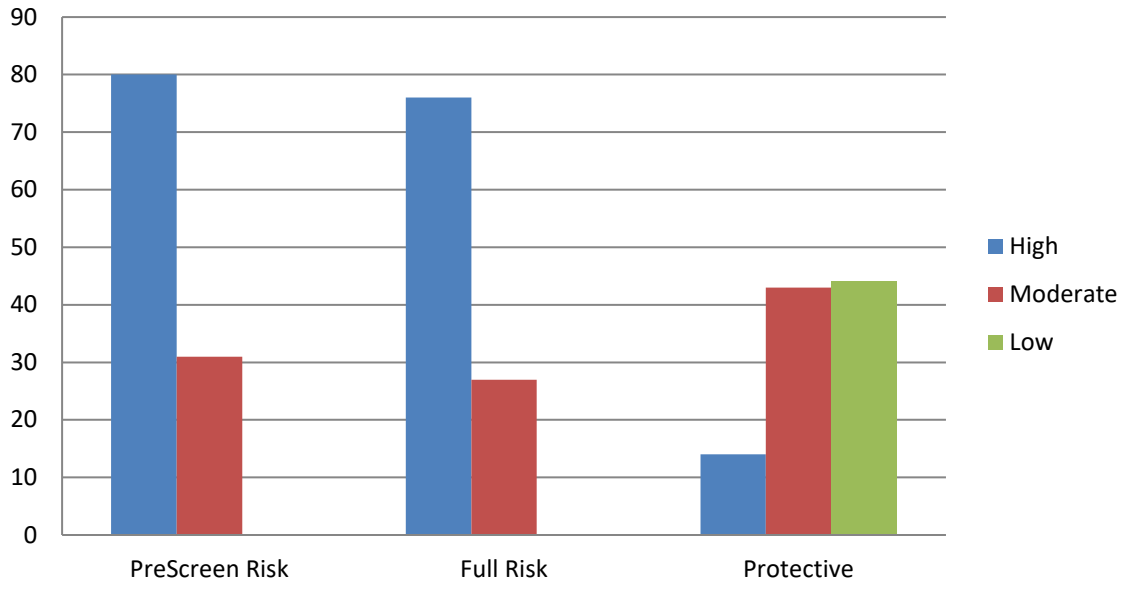
Table 48: YASI Full Assessments: Risk

	Dynamic	Static	Overall
<i>Very High</i>	25	-	-
<i>High</i>	18	102	76
<i>Moderate-High</i>	25	-	-
<i>Moderate</i>	26	0	27
<i>Low-Moderate</i>	7	-	-
<i>Low</i>	2	1	0
<i>None</i>	0	0	0
Total	103	103	103

Table 49: YASI Full Assessments: Protective

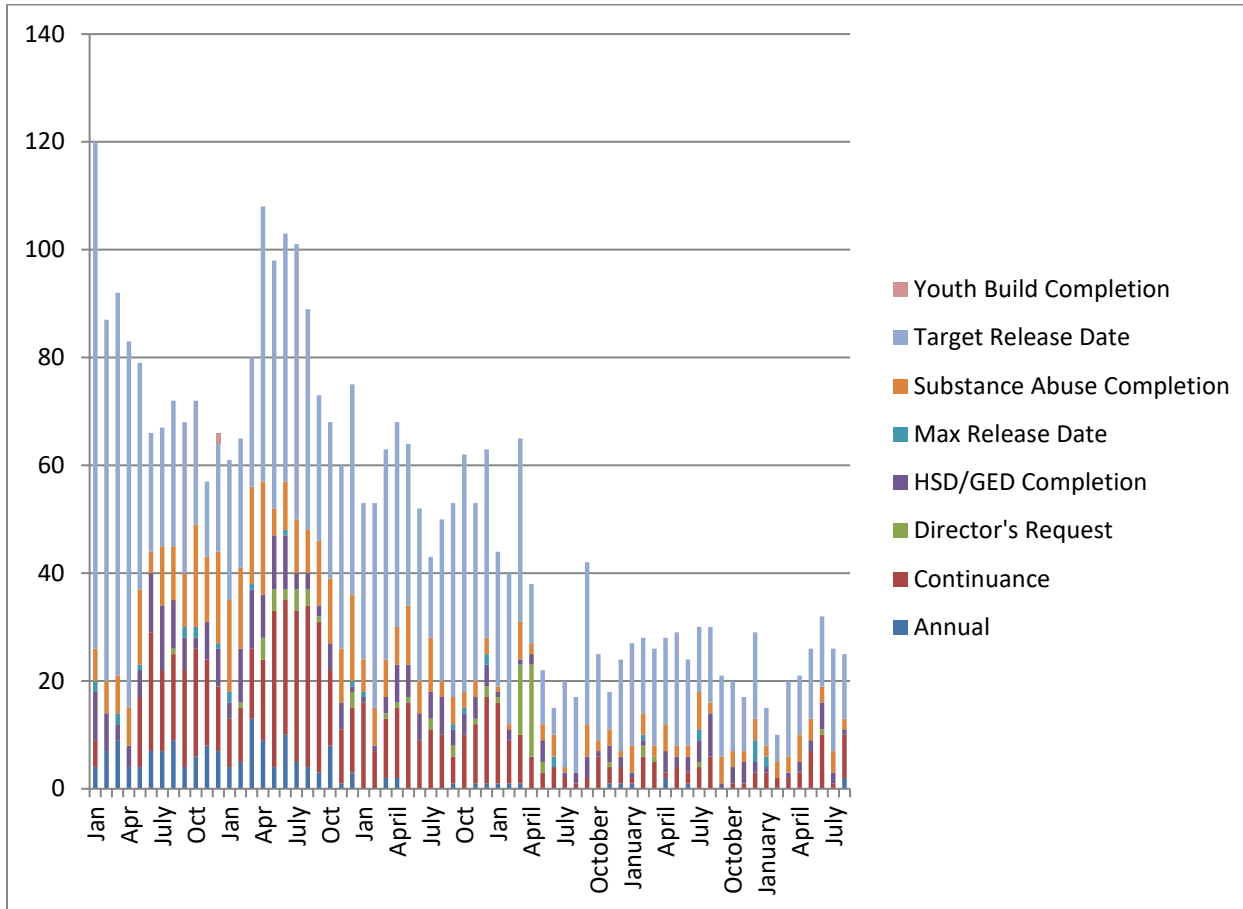
	Dynamic	Static	Overall
<i>Very High</i>	1	-	-
<i>High</i>	9	17	14
<i>Moderate-High</i>	26	-	-
<i>Moderate</i>	35	21	43
<i>Low-Moderate</i>	16	-	-
<i>Low</i>	14	8	44
<i>None</i>	2	57	2
Total	103	103	103

Chart 16: Risk and Protective Levels of Youth



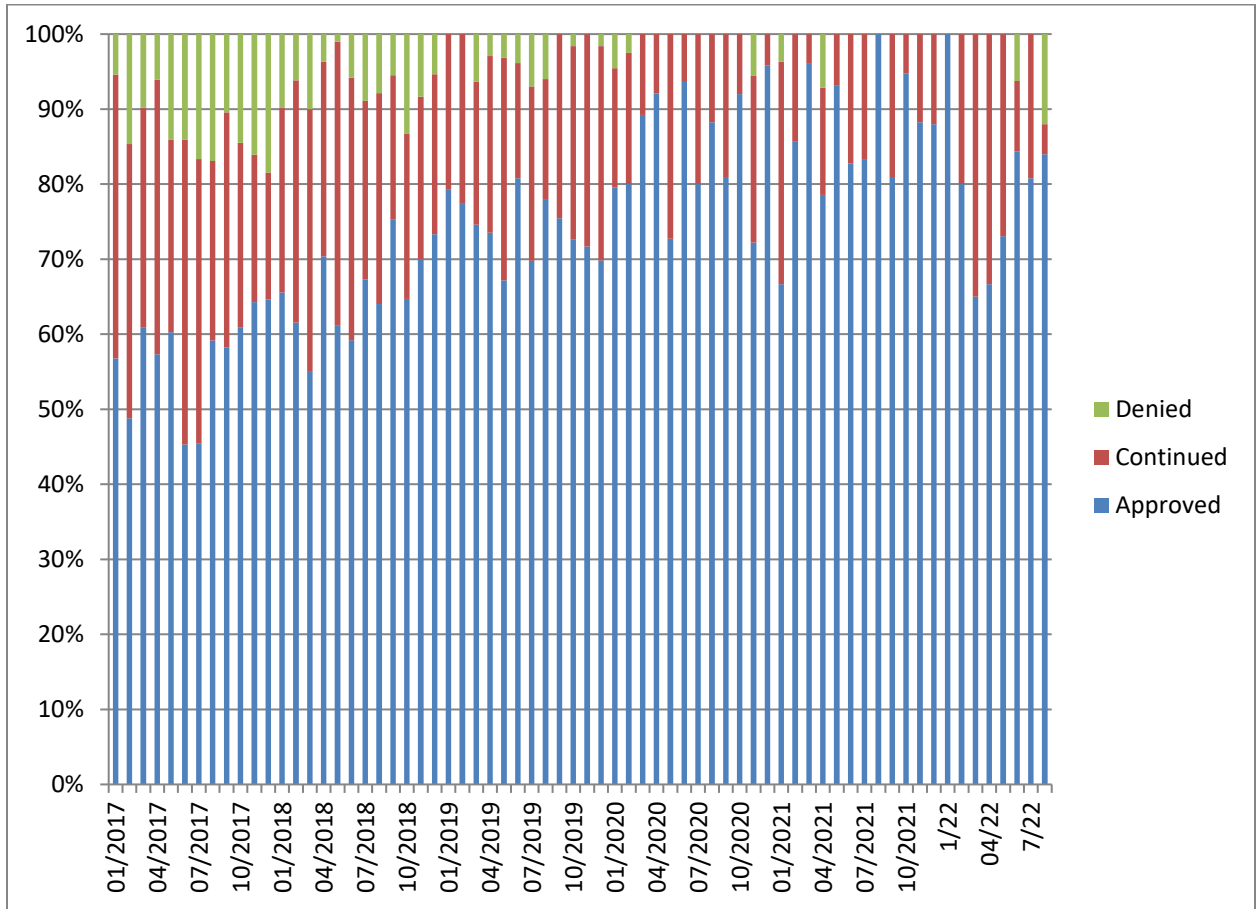
Release Reviews

Reviews by Type per Month



	Annual	Cont.	Director's Request	HSD/GED	Max Release Date	Substance Abuse	Target Release Date	Total
January	0	3	0	1	2	2	7	15
February	0	2	0	0	0	3	15	20
March	0	2	0	1	0	3	14	20
April	0	3	0	2	0	5	11	21
May	0	7	0	2	0	4	13	26
June	0	10	1	5	0	3	13	32
July	0	1	0	2	0	4	19	26
August	2	8	0	1	0	2	12	25

Percent of Release Reviews by Outcome and Month



Demographic Profile for August 31st, 2022

Sex	Institutions		Aftercare	
	Number	Percent	Number	Percent
Male	153	96.2%	259	95.9%
Female	6	3.8%	11	4.1%

Age	Institutions		Aftercare	
	Number	Percent	Number	Percent
Average Age	17.4		18.3	
16 & Under	56	35.2%	45	16.7%
17 to 20	102	64.2%	211	78.1%
20.5 & Over	1	0.6%	13	4.8%

Race/Ethnicity	Institutions		Aftercare	
	Number	Percent	Number	Percent
White	21	13.2%	48	17.8%
Black	115	72.3%	190	70.4%
Hispanic	15	9.4%	16	5.9%
Native American	0	0%	0	0%
Asian/Pacific Islander	0	0%	1	0.4%
Multi/Biracial	8	5.0%	15	5.5%

Committing Counties ¹	Institutions		Aftercare	
	Number	Percent	Number	Percent
Cook	36	22.6%	68	25.2%
Collar Counties	8	5.0%	25	9.3%
Metro-East	8	5.0%	17	6.3%
Central	70	44.0%	94	34.8%
Southern	13	8.2%	16	5.9%
Northern	24	15.1%	41	15.2%
Out of State	0	0%	9	3.3%

¹ Committing Counties: Cook = Cook; Collar Counties = DuPage, Kane, Lake, McHenry, Will; Metro East Counties = Madison, St. Clair; Central IL Counties = Adams, Bond, Brown, Calhoun, Cass, Champaign, Christian, Clark, Coles, Crawford, Cumberland, Dewitt, Douglas, Edgar, Effingham, Fayette, Ford, Fulton, Greene, Hancock, Henderson, Iroquois, Jasper, Jersey, Knox, Livingston, Logan, McDonough, McLean, Macon, Macoupin, Marshall, Mason, Menard, Montgomery, Morgan, Moultrie, Peoria, Piatt, Pike, Sangamon, Schuyler, Scott, Shelby, Stark, Tazewell, Vermillion Warren, Woodford; South IL Counties = Alexander, Clay, Clinton, Edwards, Franklin, Gallatin, Hamilton, Hardin, Jackson, Jefferson, Johnson, Lawrence, Marion, Massac, Monroe, Perry, Pope, Pulaski, Randolph, Richland, Saline, Union, Wabash, Washington, Wayne, White, Williamson; North, IL Counties = Boone, Bureau, Carroll, DeKalb, Grundy, Henry, Jo-Daviess, Kankakee, Kendall, LaSalle, Lee, Mercer, Ogle, Putnam, Rock Island, Stephenson, Whiteside, Winnebago; Other = Out of State

Offense Class	Institutions		Aftercare	
	Number	Percent	Number	Percent
Murder	8	5.0%	3	1.1%
Class X Felony	52	32.7%	67	24.8%
Class 1 Felony	34	21.4%	67	24.8%
Class 2 Felony	42	26.4%	89	33.0%
Class 3 Felony	13	8.2%	18	6.7%
Class 4 Felony	10	6.3%	17	6.3%

Offense Class by Race	Black	White	Hispanic	Bi/Multiracial
Murder	6	1	4	0
Class X Felony	99	11	7	2
Class 1 Felony	72	15	6	8
Class 2 Felony	83	27	12	9
Class 3 Felony	17	11	2	1
Class 4 Felony	23	1	0	3
Total	300	66	31	23

This table provides a summary of all youth in DJJ (both facilities and Aftercare) relating to their race and holding offense crime class. The numbers in the table and the raw number of youth in a category and the percentage are the percent of a particular racial group in a category.

Prefix	Institutions		Aftercare	
	Number	Percent	Number	Percent
Court Evaluation	10	6.3%	0	0%
Delinquent	96	60.4%	227	84.1%
Extended Jurisdiction	5	3.1%	10	3.7%
Felon	38	23.9%	3	1.1%
First Degree Murderer	5	3.1%	2	0.7%
Habitual Juvenile	1	0.6%	8	3.0%
Violent Juvenile	4	2.5%	11	4.1%
From Other State	0	0%	9	3.3%

Aftercare Completion – August 2022

Characteristics of Youth at Exiting Aftercare

Youth exiting aftercare are youth that are being discharged from IDJJ custody and youth that are entering an IDJJ facility

Sex	Aftercare Exits	
	Number	Percent
Male	27	96.4%
Female	1	3.6%

Age	Aftercare Exits	
	Number	Percent
Average Age	18.0	
16 & Under	9	32.1%
17 to 20	16	57.1%
20.5 & Over	3	10.7%

Committing Counties ²	Aftercare Exits	
	Number	Percent
Cook	4	14.3%
Collar Counties	2	7.1%
Metro-East	0	0%
Central	13	46.4%
Southern	5	17.9%
Northern	4	14.3%
Out of State	0	0%

Race/Ethnicity	Aftercare Exits	
	Number	Percent
White	7	25.0%
Black	20	71.4%
Hispanic	0	0%
Native American	0	0%
Asian/Pacific Islander	0	0%
Multi/Biracial	1	3.6%

² Committing Counties: Cook = Cook; Collar Counties = DuPage, Kane, Lake, McHenry, Will; Metro East Counties = Madison, St. Clair; Central IL Counties = Adams, Bond, Brown, Calhoun, Cass, Champaign, Christian, Clark, Coles, Crawford, Cumberland, Dewitt, Douglas, Edgar, Effingham, Fayette, Ford, Fulton, Greene, Hancock, Henderson, Iroquois, Jasper, Jersey, Knox, Livingston, Logan, McDonough, McLean, Macon, Macoupin, Marshall, Mason, Menard, Montgomery, Morgan, Moultrie, Peoria, Piatt, Pike, Sangamon, Schuyler, Scott, Shelby, Stark, Tazewell, Vermillion Warren, Woodford; South IL Counties = Alexander, Clay, Clinton, Edwards, Franklin, Gallatin, Hamilton, Hardin, Jackson, Jefferson, Johnson, Lawrence, Marion, Massac, Monroe, Perry, Pope, Pulaski, Randolph, Richland, Saline, Union, Wabash, Washington, Wayne, White, Williamson; North, IL Counties = Boone, Bureau, Carroll, DeKalb, Grundy, Henry, Jo-Daviess, Kankakee, Kendall, LaSalle, Lee, Mercer, Ogle, Putnam, Rock Island, Stephenson, Whiteside, Winnebago; Other = Out of State

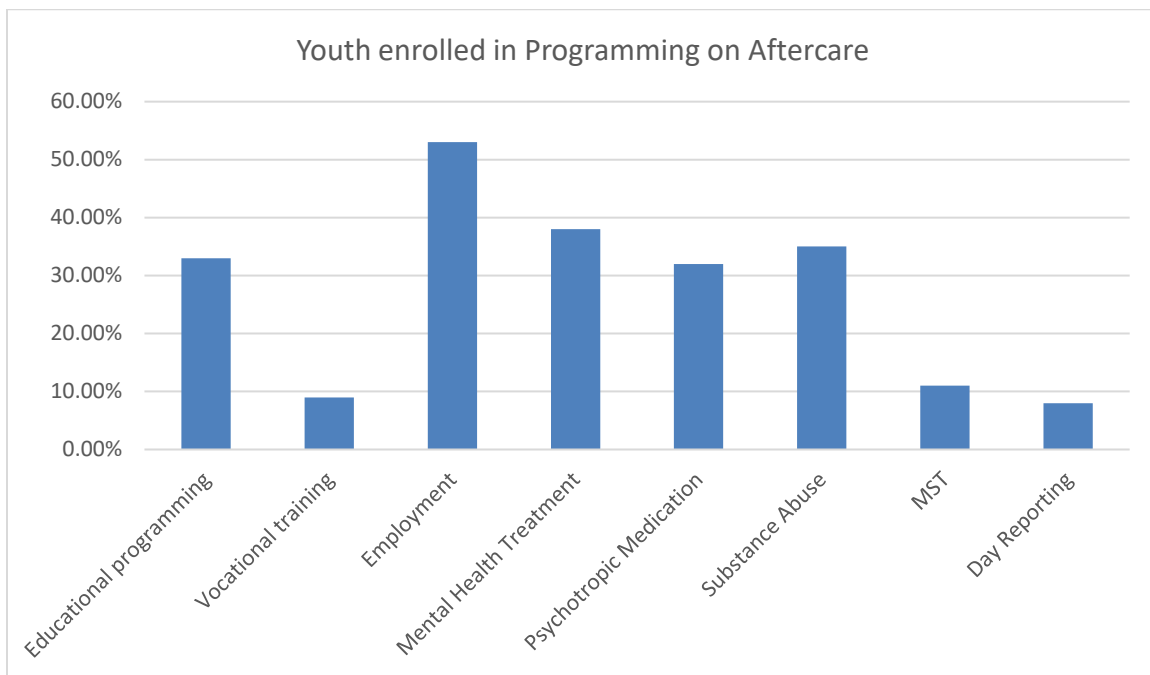
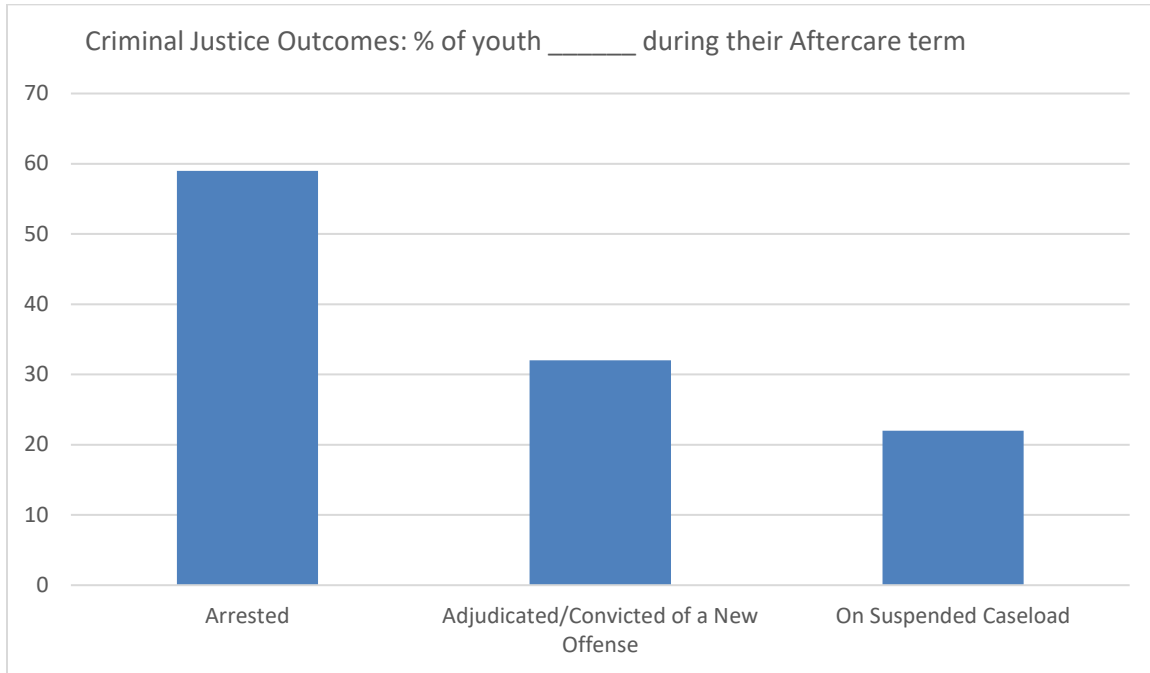
Offense Class	Aftercare Exits	
	Number	Percent
Murder	0	0%
Class X Felony	5	17.9%
Class 1 Felony	6	21.4%
Class 2 Felony	11	39.3%
Class 3 Felony	3	10.7%
Class 4 Felony	3	10.7%

Prefix	Aftercare Exits	
	Number	Percent
Court Evaluation	0	0%
Delinquent	23	82.1%
Extended Jurisdiction	1	3.6%
Felon	2	7.1%
First Degree Murderer	0	0%
Habitual Juvenile	1	3.6%
Violent Juvenile	1	3.6%
From Other State	0	0%

Discharge Reason	Aftercare Exits	
	Number	Percent
Admitted to Institution	14	50%
Aftercare Discharge	10	35.7%
Adult Sentence Discharge	3	10.7%
Transfer to Adult Parole	0	0%
Court Ordered Discharge	0	0%
Discharged from Illinois Custody	0	0%
Statutory Discharge	1	3.6%
Death	0	0%
Vacated Commitment Order	0	0%

Youth Outcomes at Discharge from Aftercare – 2022

These are youth to date youth outcomes are for youth discharging aftercare and excludes youth still under IDJJ supervision in facilities



Percent of Youth Completing Conditions

