

IDJJ Population

Institutional & Aftercare/Parole

July 2013-June 2014

(State Fiscal Year 2014)

The **Illinois Department of Juvenile Justice (IDJJ)** is a state agency responsible for youth committed to its care as a sentence for a delinquent offense. IDJJ includes both secure confinement and community-based aftercare services. More information about IDJJ is available at <http://idjj.illinois.gov/>.

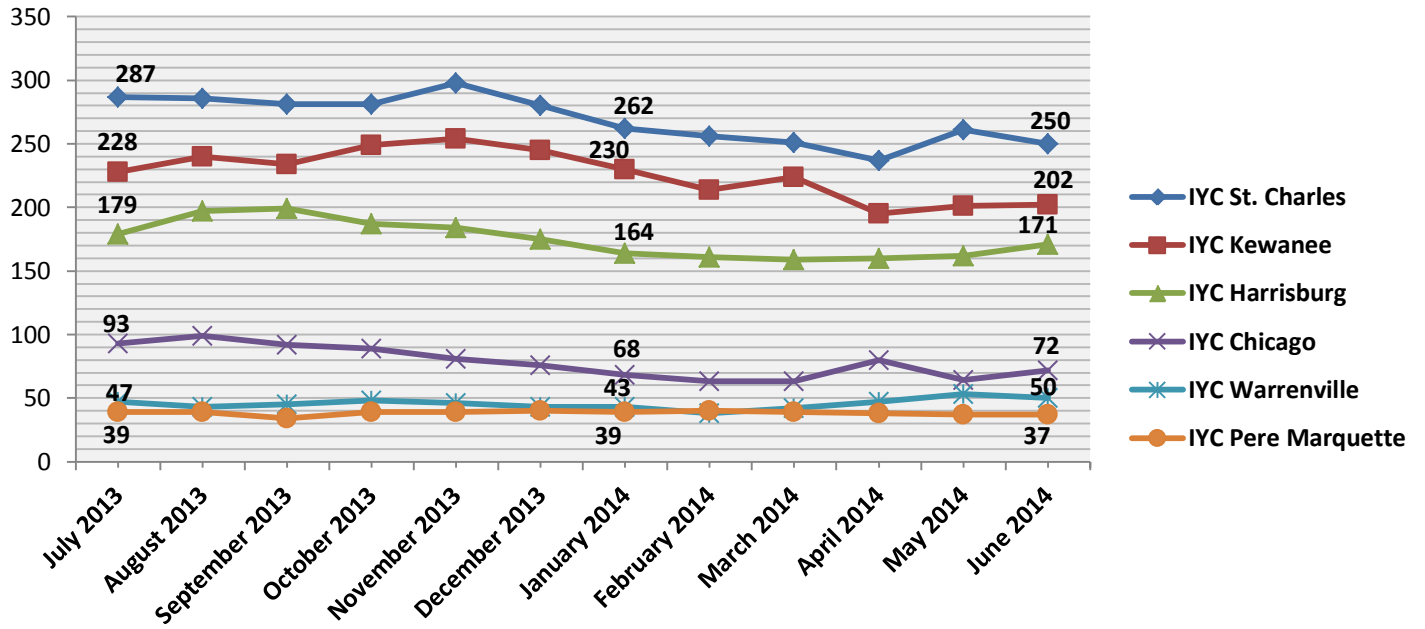
The **Illinois Juvenile Justice Commission (IJJC)** is an advisory group responsible for administering federal juvenile justice grants, ensuring compliance with the Juvenile Justice and Delinquency Prevention Act, and advising the Governor and General Assembly on matters of juvenile justice. More information about IJJC is available at <http://ijjc.illinois.gov>.

The IJJC commissioned the **Center for Prevention Research and Development (CPRD)** at the University of Illinois, Urbana-Champaign, to create this report. CPRD seeks to support public policy in three ways: improving state and community capacity for prevention; improving prevention and educational practices through research and evaluation; and improving policies and decision making. More information about CPRD is available at <http://www.cprd.illinois.edu>.

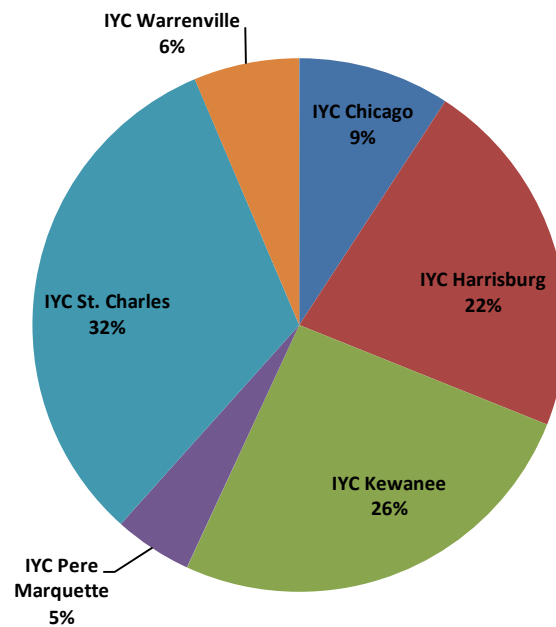
CPRD created tables in this report using data published by IDJJ on its website <http://www.illinois.gov/idjj/Pages/AboutUs.aspx>. This data comes from IDJJ's Juvenile Tracking System (JTS) with the exception of the education data, which is received by IDJJ directly from the Illinois Youth Centers.

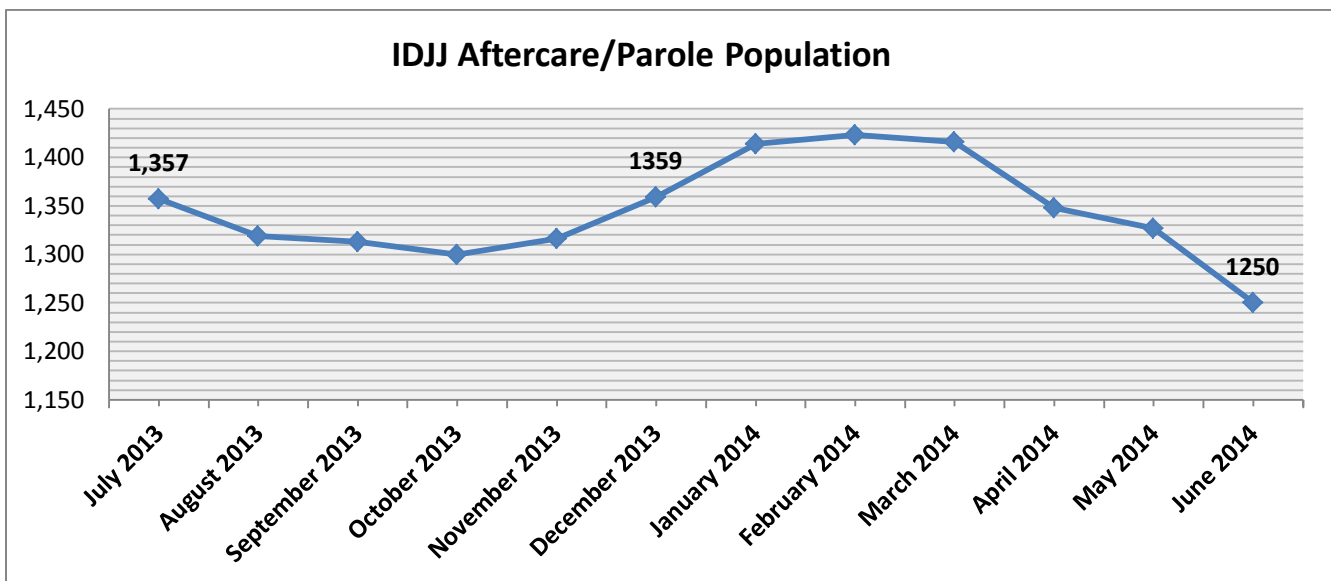
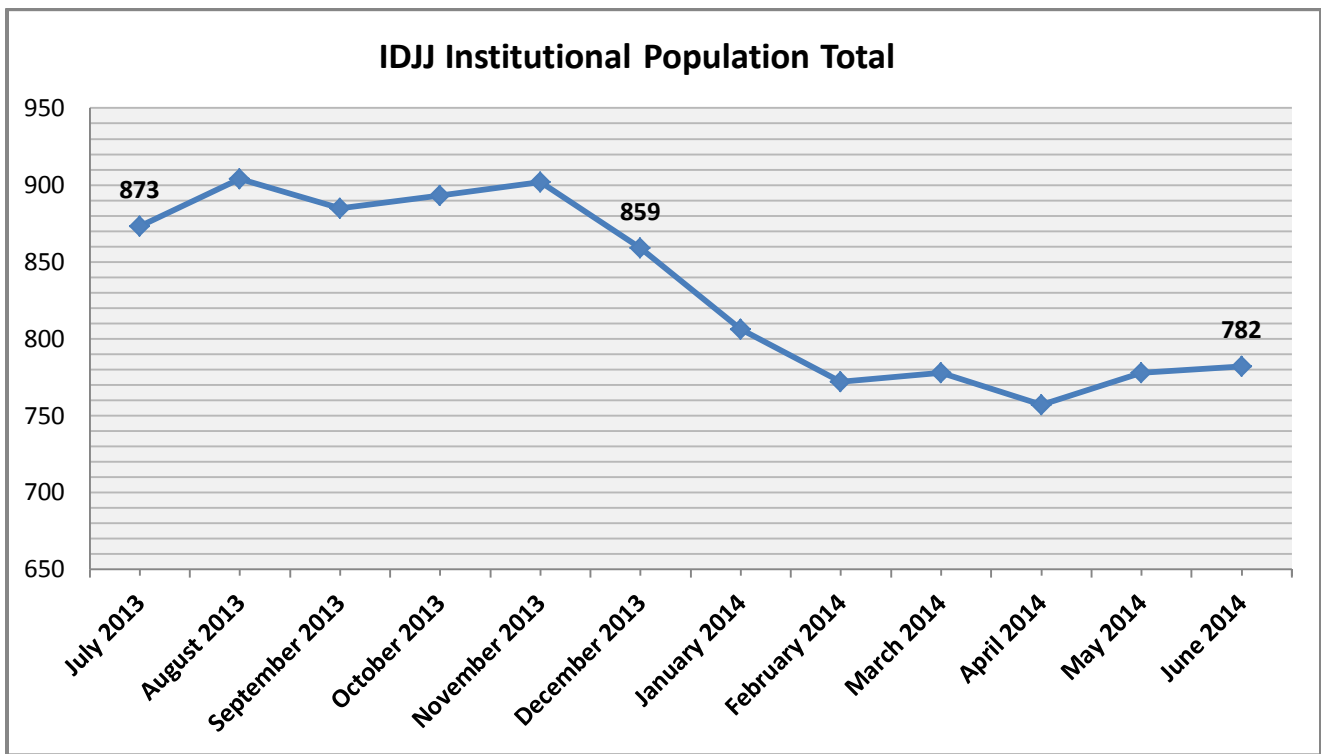
September 2014

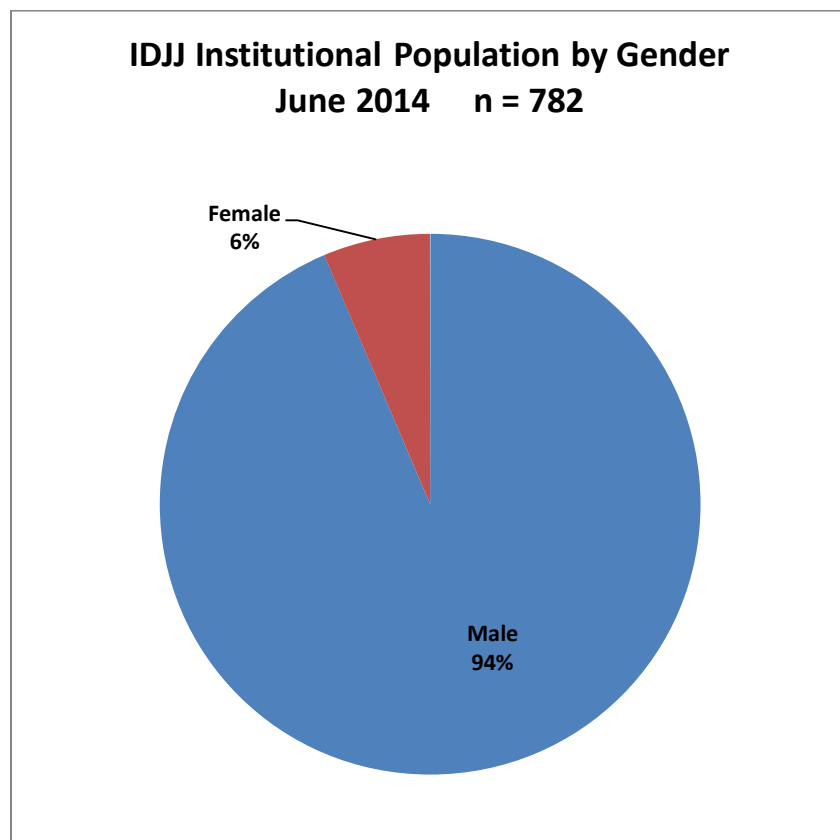
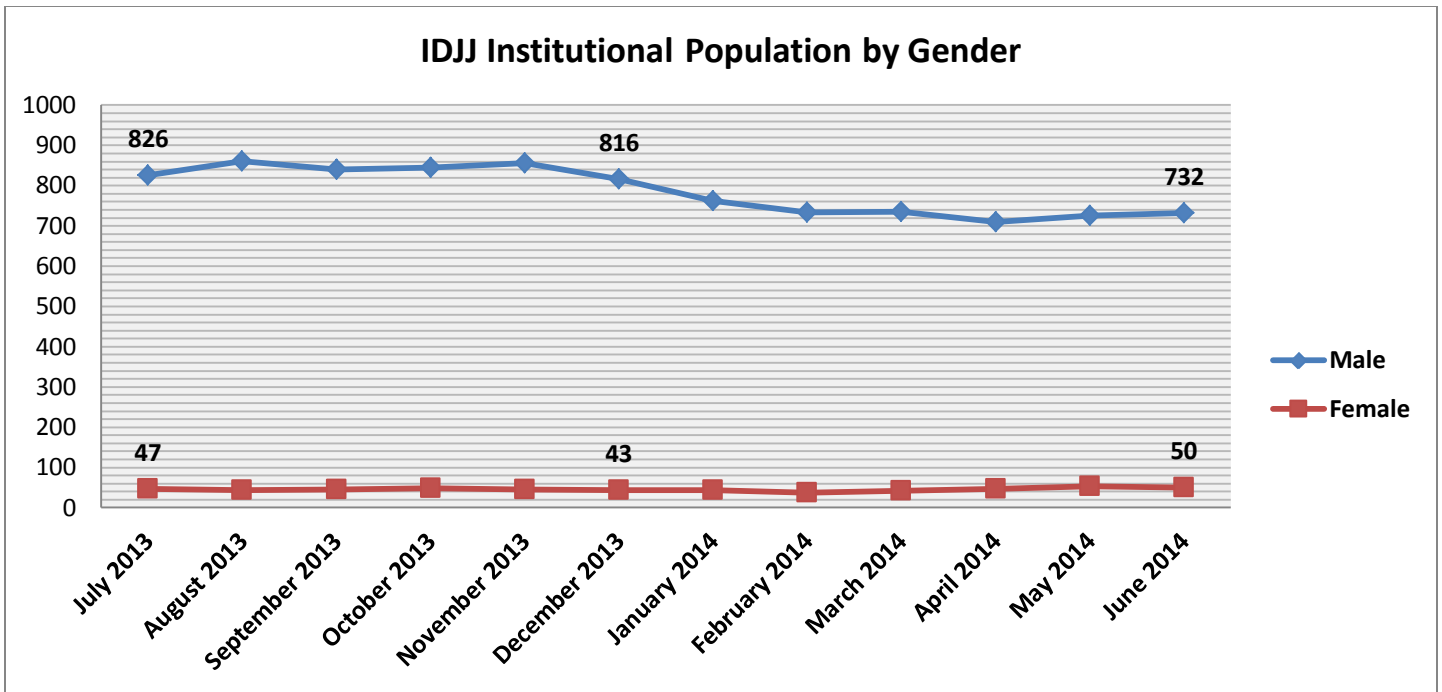
IDJJ Institutional Population by Illinois Youth Center

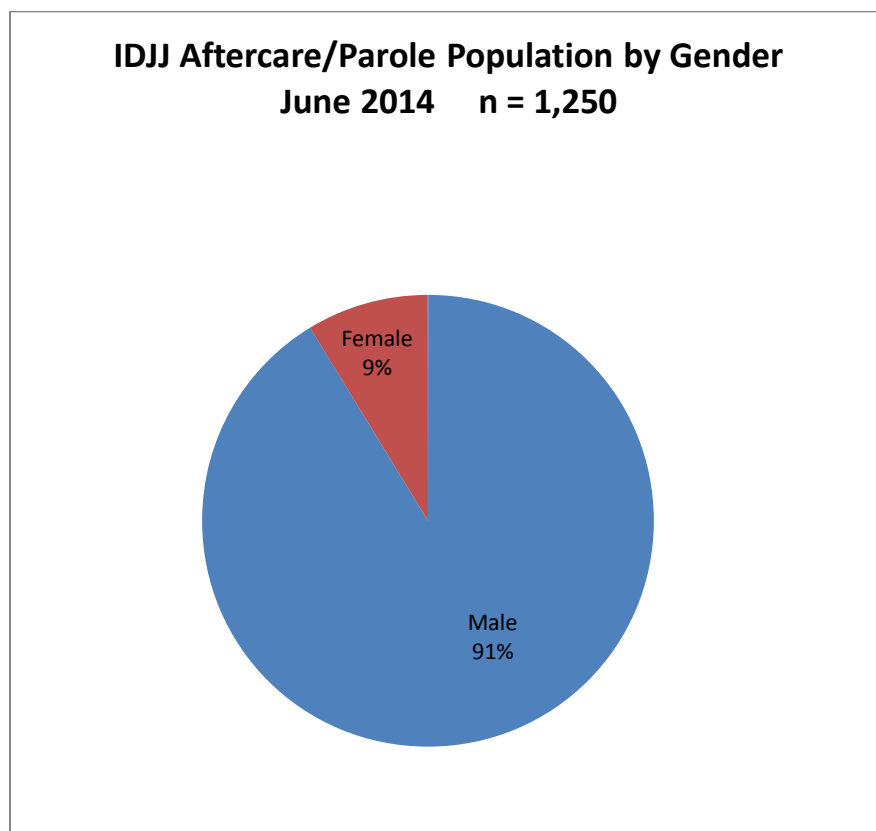
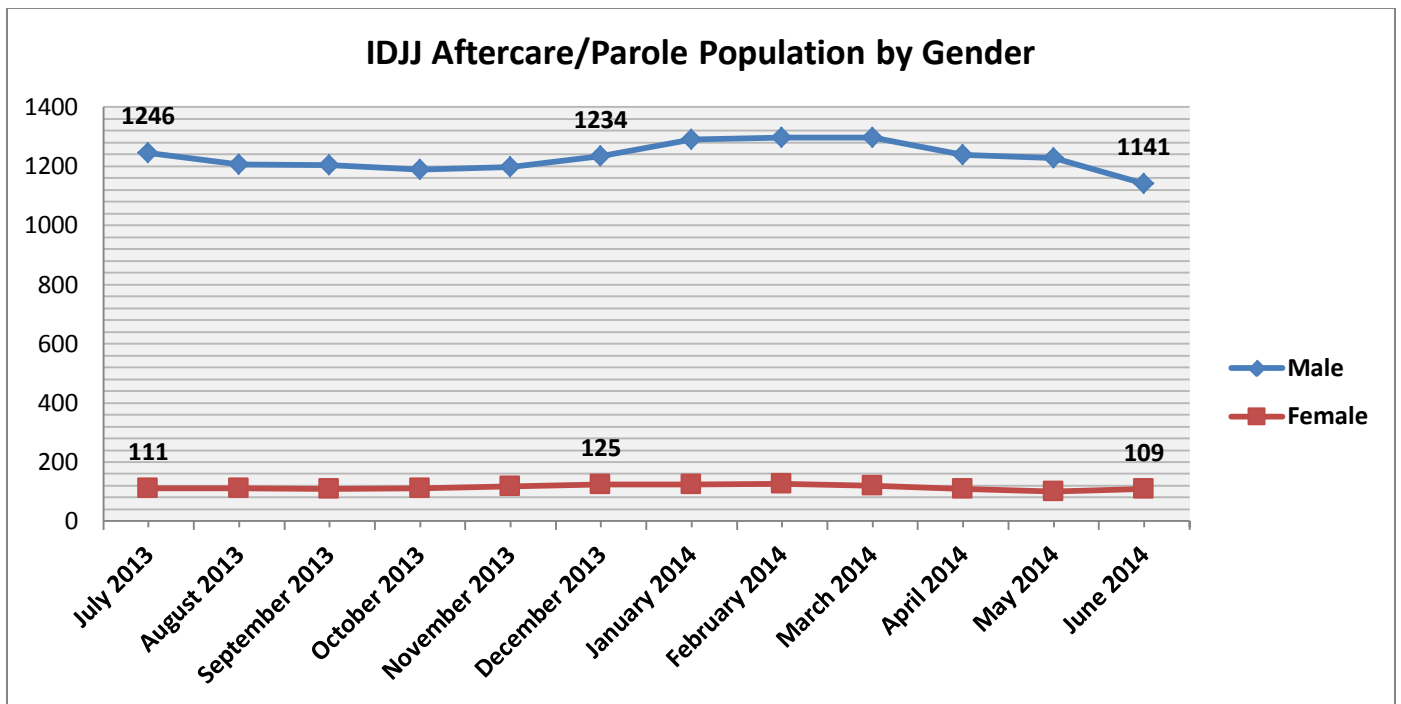


IDJJ Institutional Population by IYC June 2014 n = 782

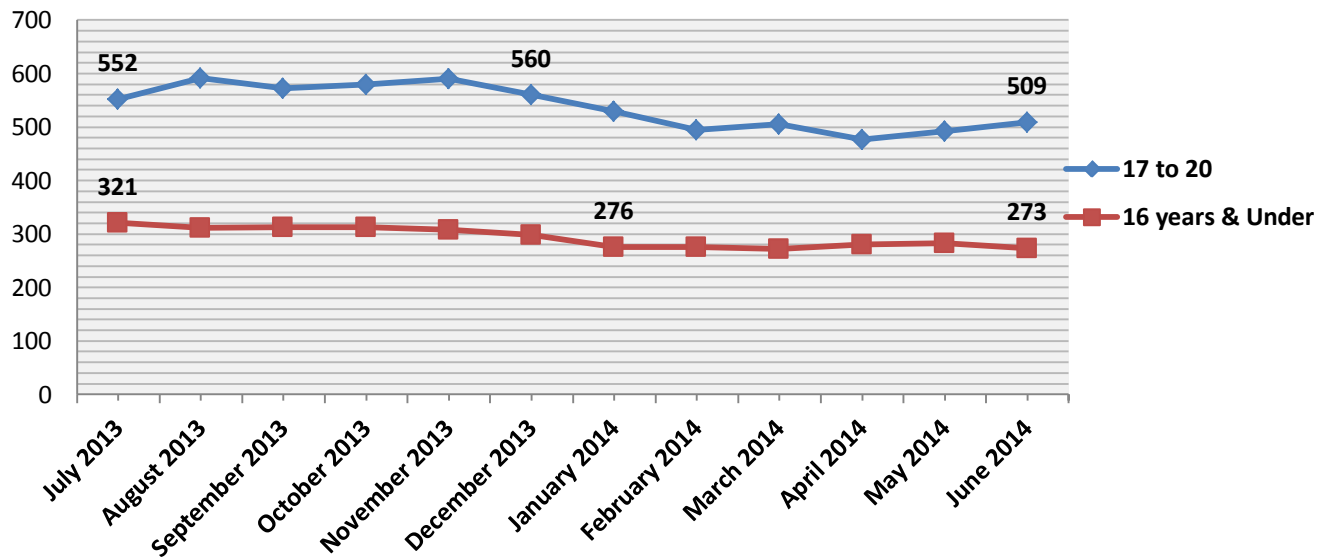




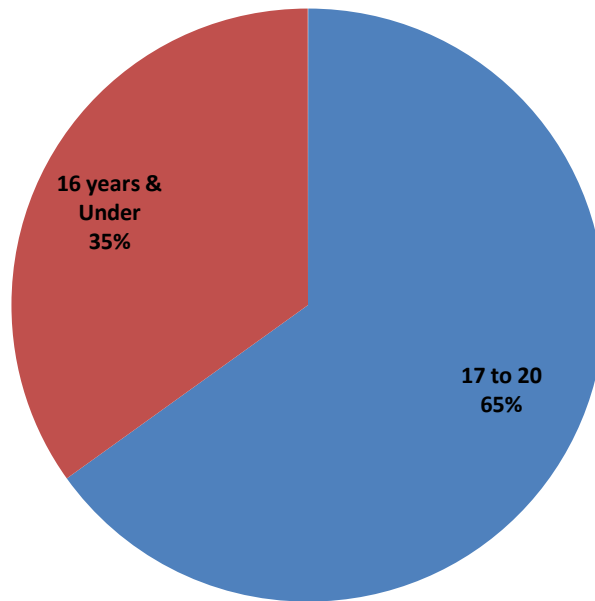


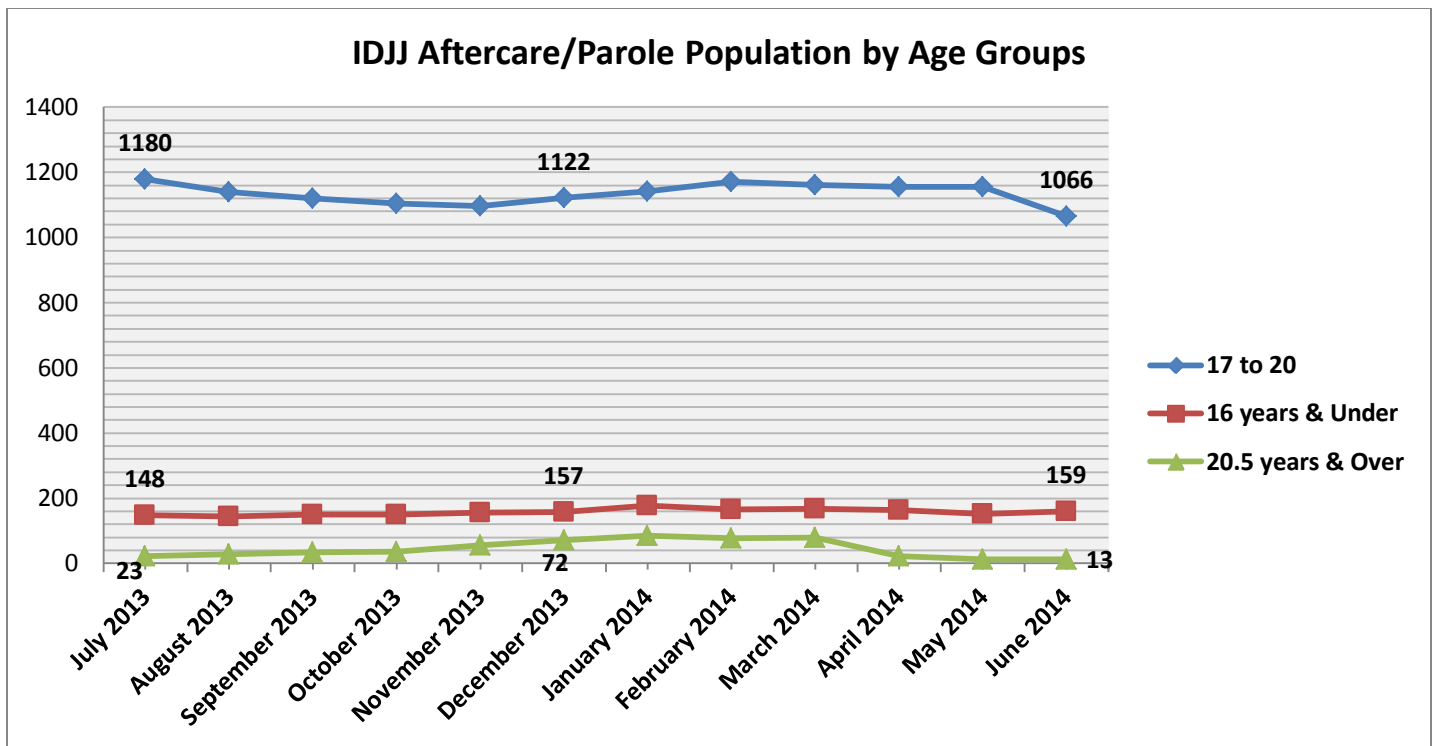


IDJJ Institutional Population by Age Groups

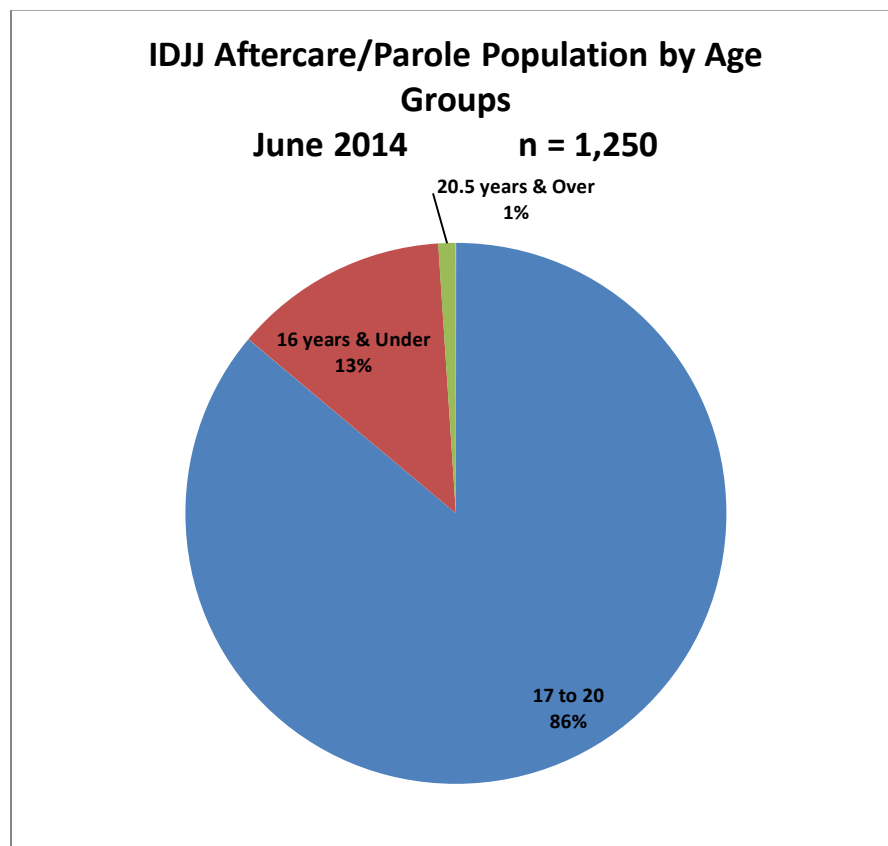


IDJJ Institutional Population by Age Groups June 2014 n = 782

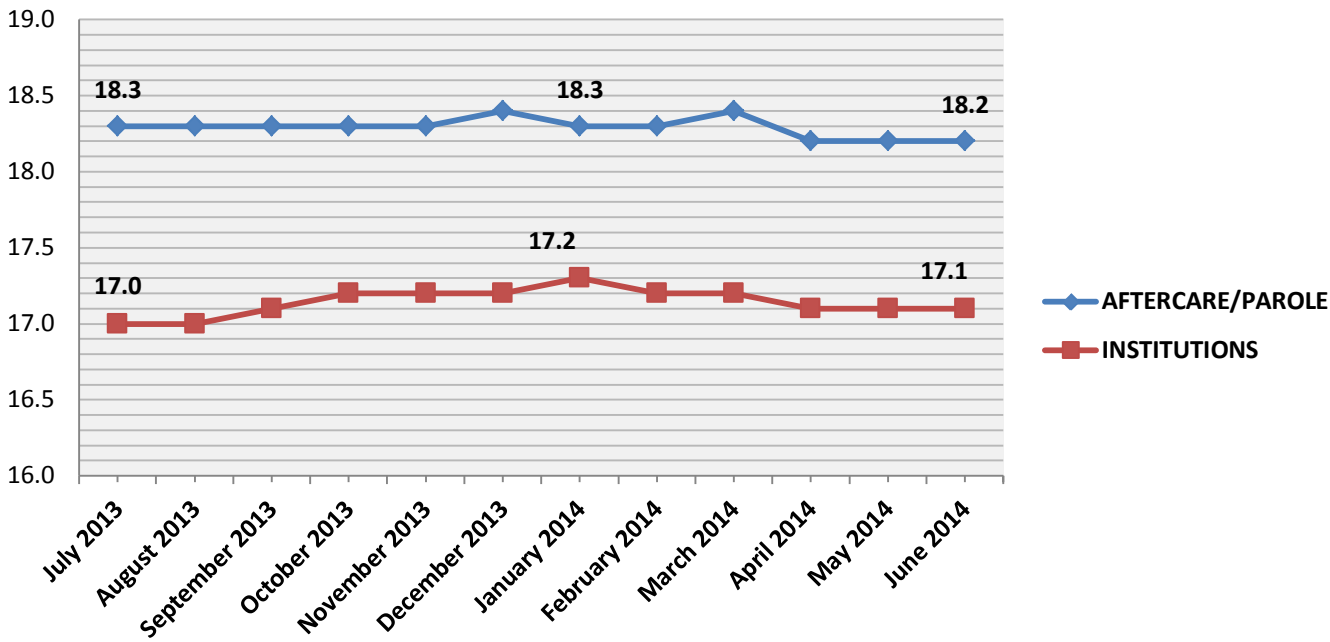




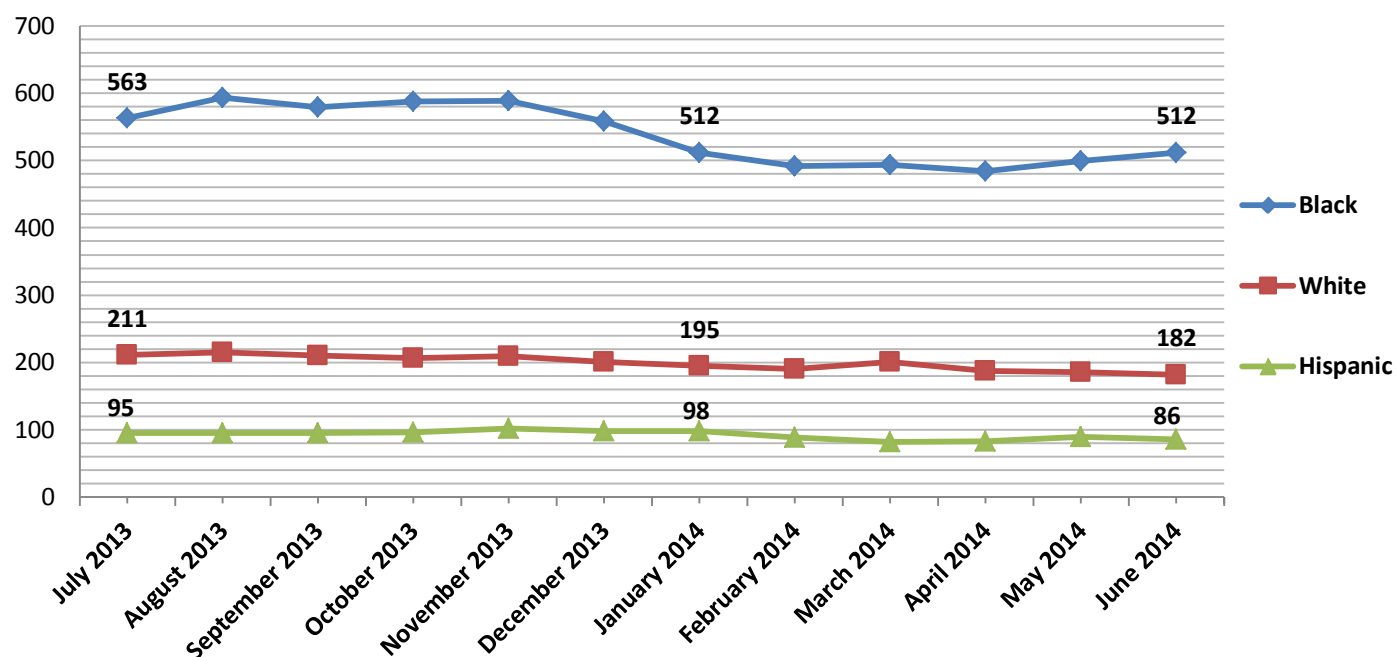
Note: There are no institutionalized youth 20.5 years and older



IDJJ Population Average Age

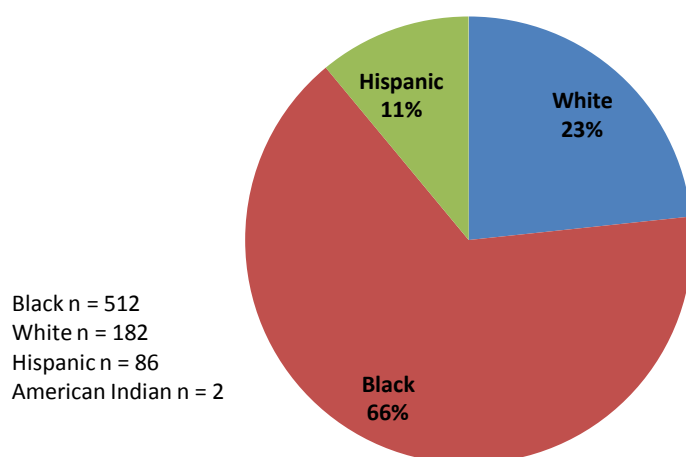


IDJJ Institutional Population by Race & Ethnicity

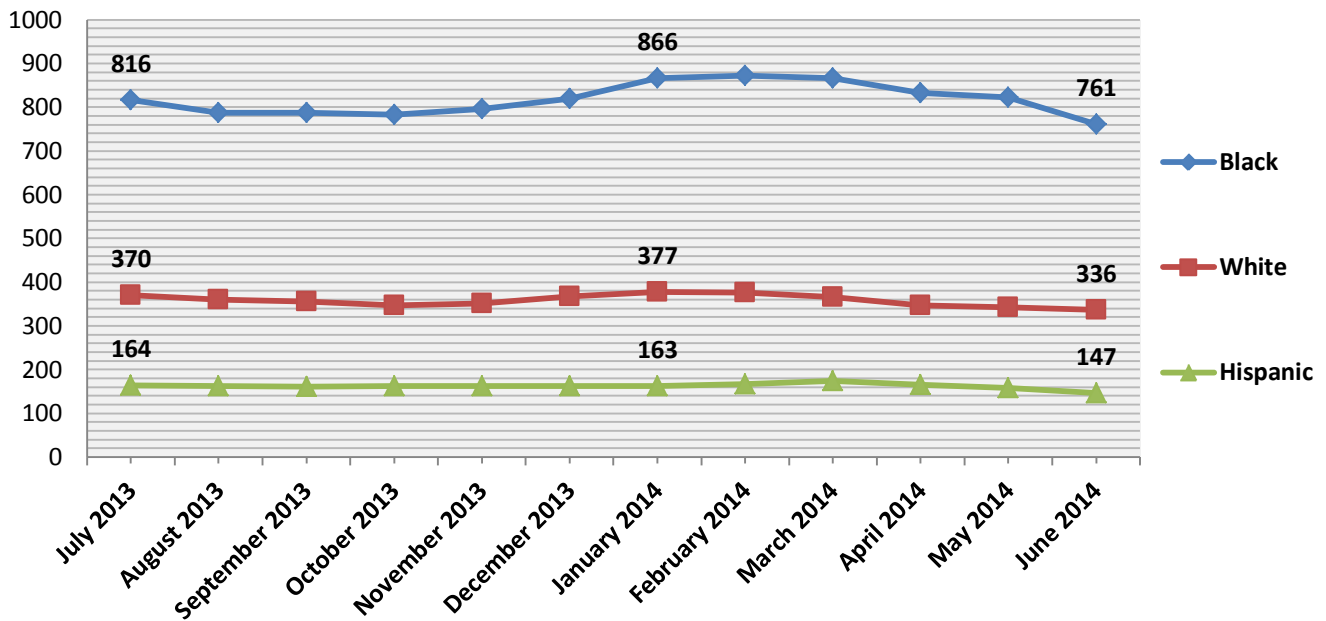


Note: The American Indian, Asian, and Unknown/Other populations for each month from July 2013 to June 2014 was 2 or fewer.

IDJJ Institutional Population by Race & Ethnicity June 2014 n = 782

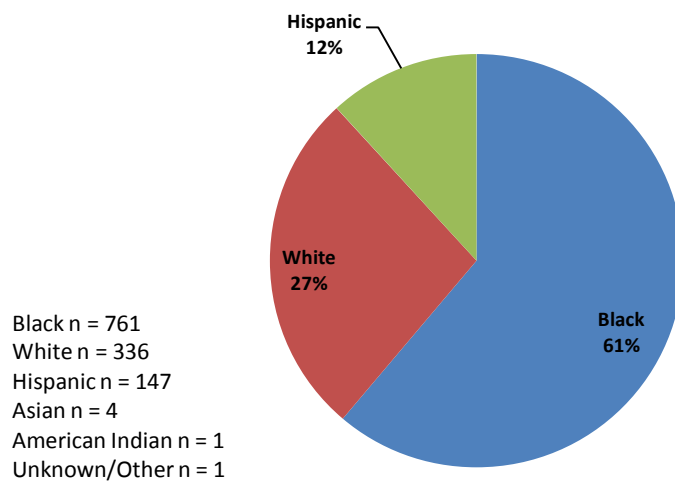


IDJJ Aftercare/Parole Population by Race & Ethnicity

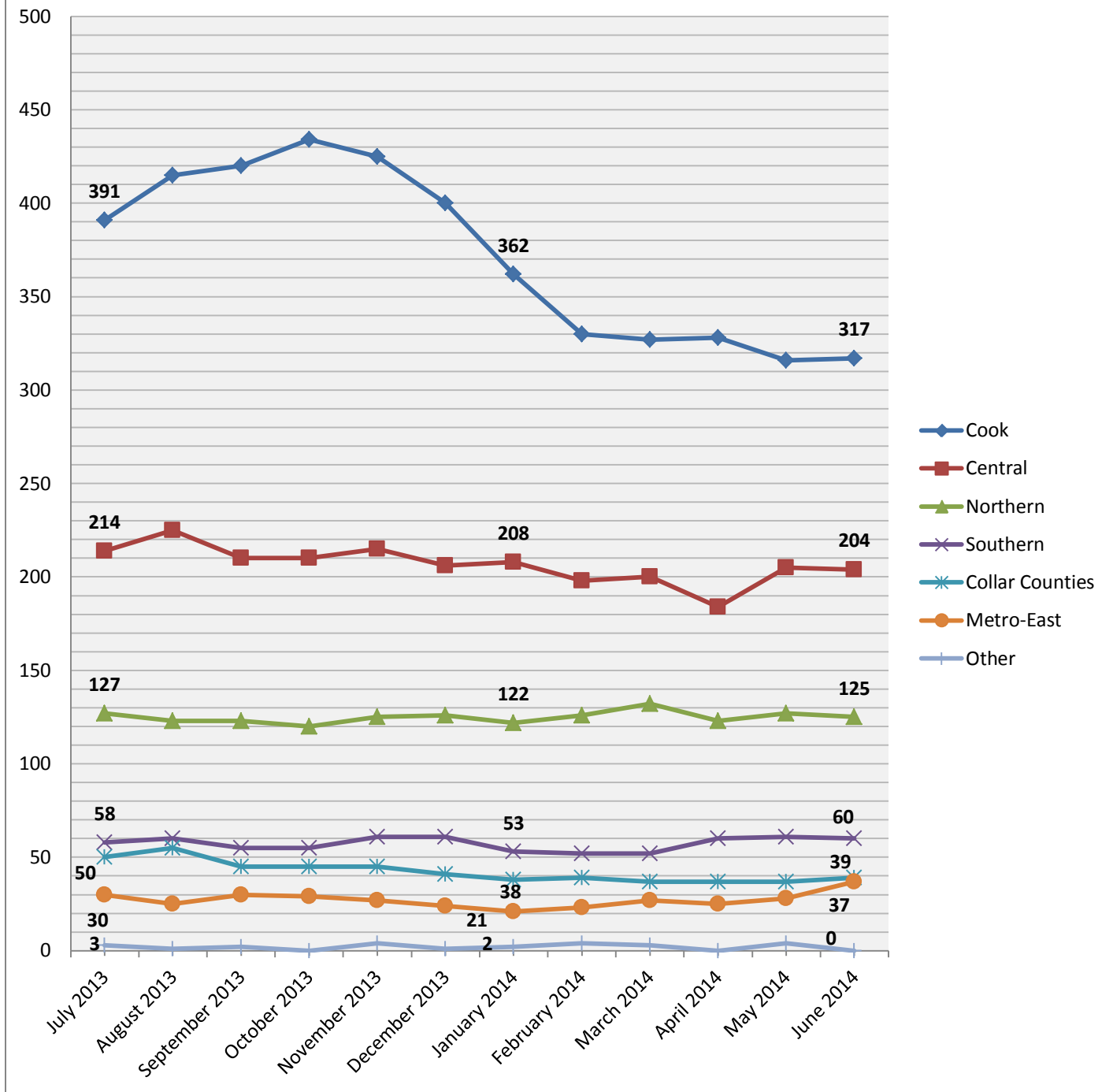


Note: The American Indian and Asian populations for each month from July 2013 to June 2014 was 4 or fewer. The Unknown/Other population for each month from July 2013 to June 2014 was 1 or fewer.

IDJJ Aftercare/Parole Population by Race & Ethnicity June 2014 n = 1,250

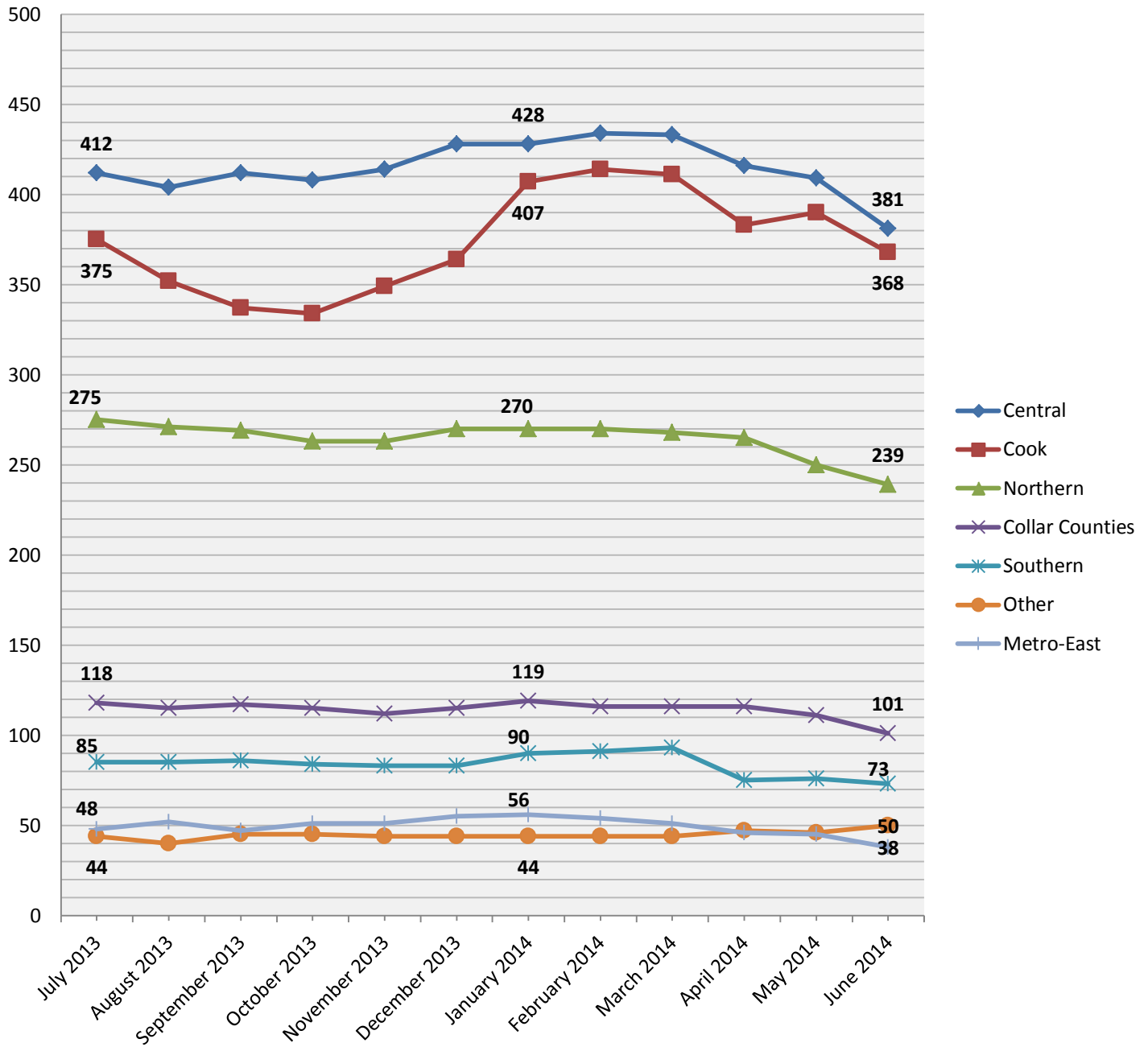


IDJJ Institutional Population by Committing Counties

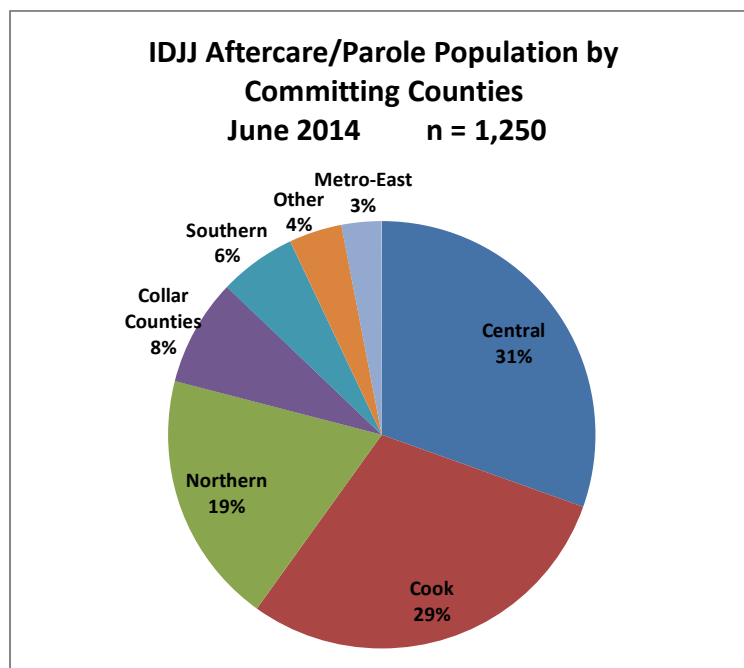
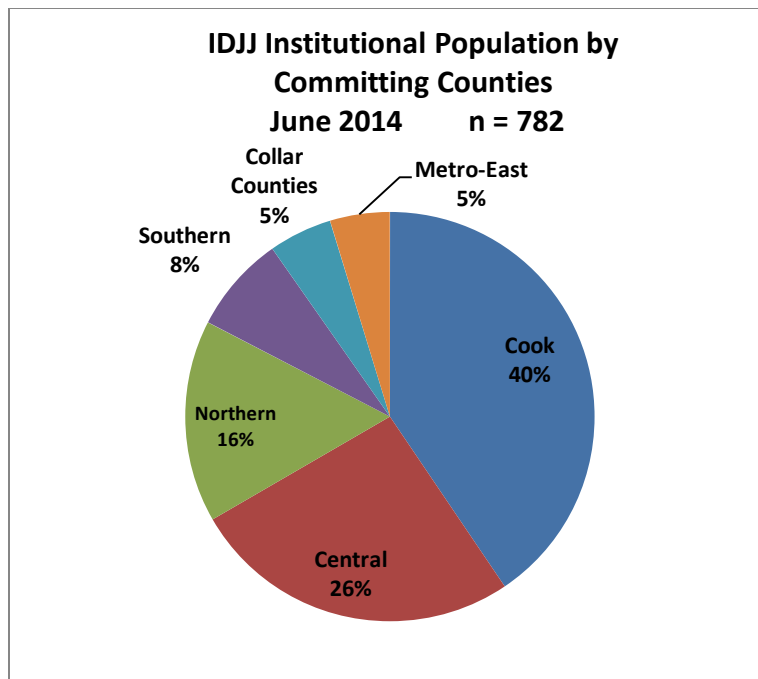


See Page 12 for explanation of County groupings

IDJJ Aftercare/Parole Population by Committing Counties



See Page 12 for explanation of County groupings



Committing Counties breakout:

Cook = Cook

Collar Counties = DuPage, Kane, Lake, McHenry, Will

Metro East Counties = Madison, St. Clair

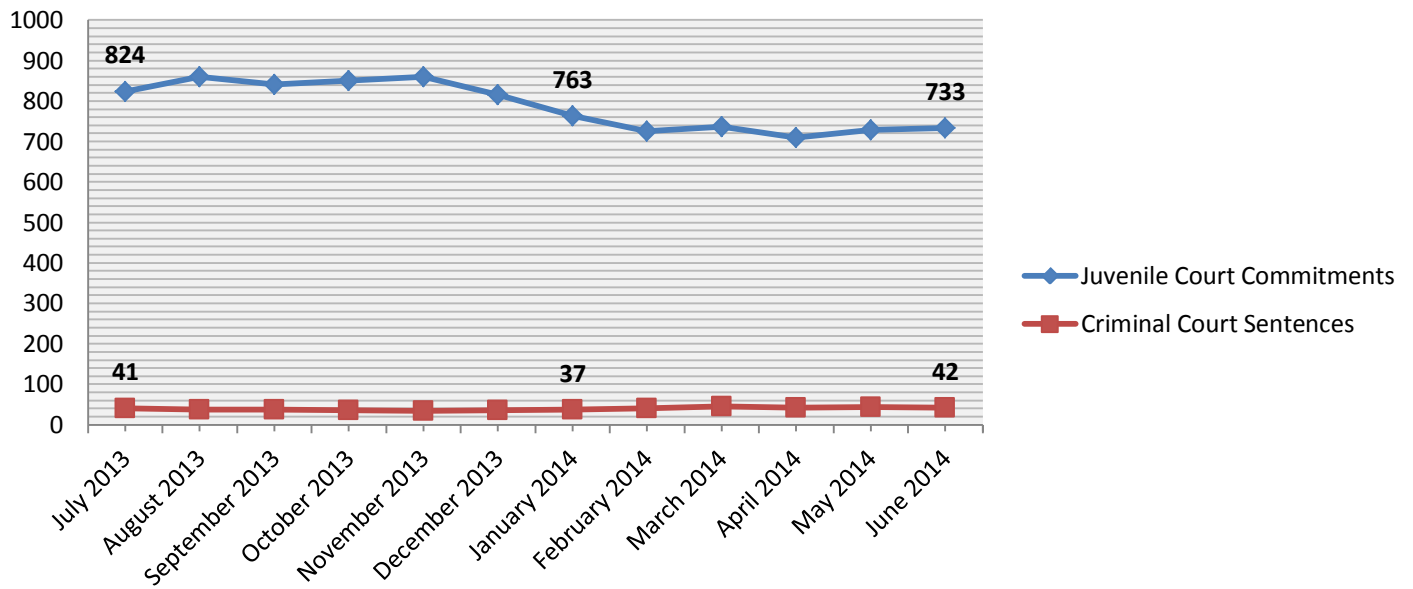
Central IL Counties = Adams, Bond, Brown, Calhoun, Cass, Christian, Clark, Coles, Crawford, Cumberland, Dewitt, Douglas, Edgar, Effingham, Fayette, Ford, Fulton, Greene, Hancock, Henderson, Iroquois, Jasper, Jersey, Knox, Livingston, Logan, McDonough, McLean, Macon, Macoupin, Marshall, Mason, Menard, Montgomery, Morgan, Moultrie, Peoria, Piatt, Pike, Sangamon, Schuyler, Scott, Shelby, Stark, Tazewell, Vermillion Warren, Woodford

South IL Counties = Alexander, Clay, Clinton, Edwards, Franklin, Gallatin, Hamilton, Hardin, Jackson, Jefferson, Johnson, Lawrence, Marion, Massac, Monroe, Perry, Pope, Pulaski, Randolph, Richland, Saline, Union, Wabash, Washington, Wayne, White, Williamson

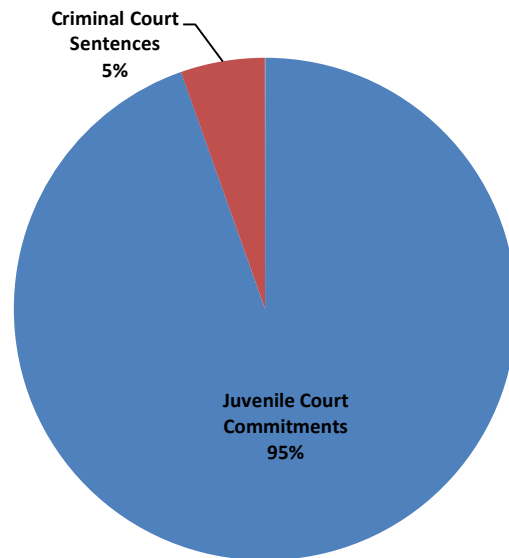
North, IL Counties = Boone, Bureau, Carroll, DeKalb, Grundy, Henry, Jo-Daviess, Kankakee, Kendall, LaSalle, Lee, Mercer, Ogle, Putnam, Rock Island, Stephenson, Whiteside, Winnebago

Other = Out of State

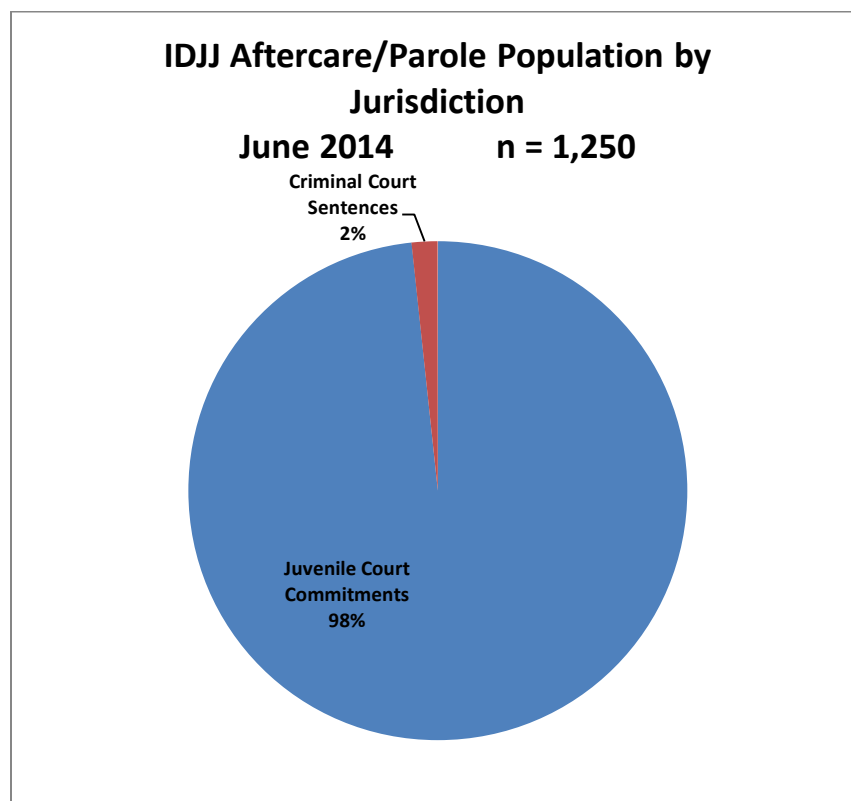
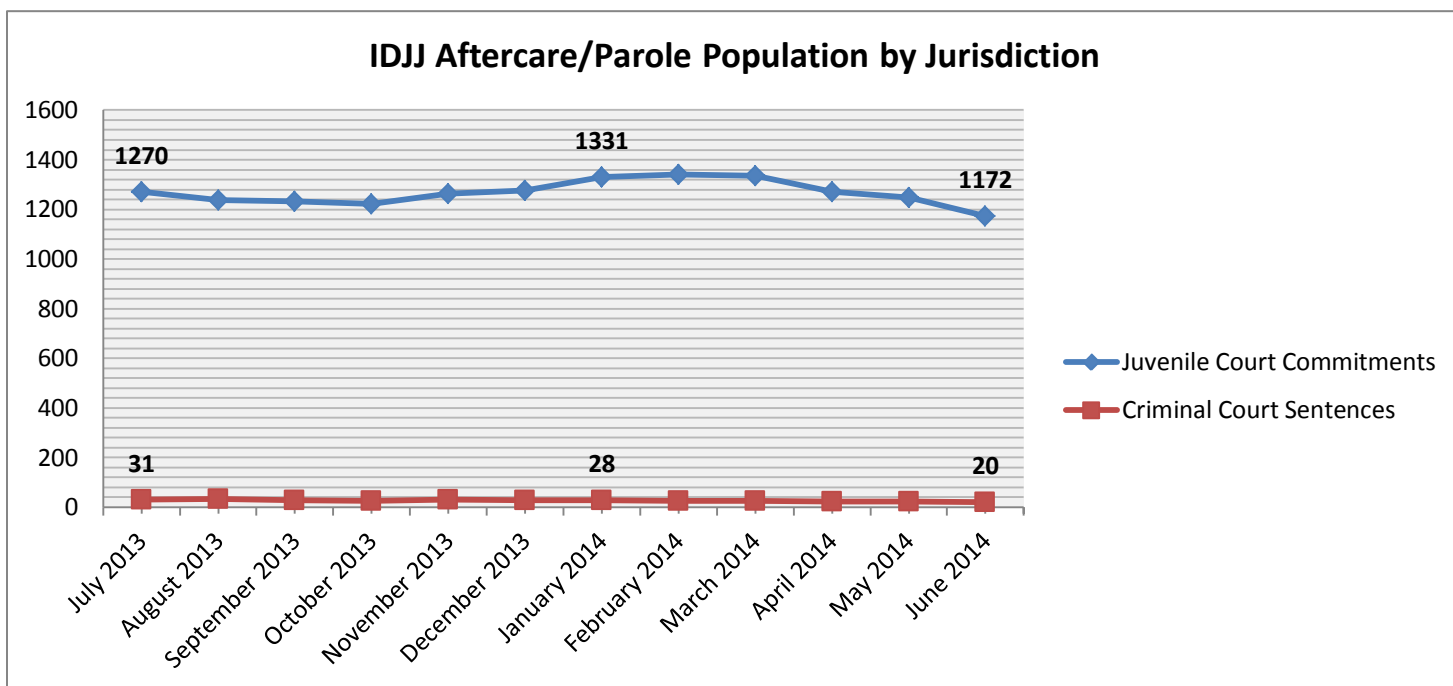
IDJJ Institutional Population by Jurisdiction



IDJJ Institutional Population by Jurisdiction June 2014 n = 782

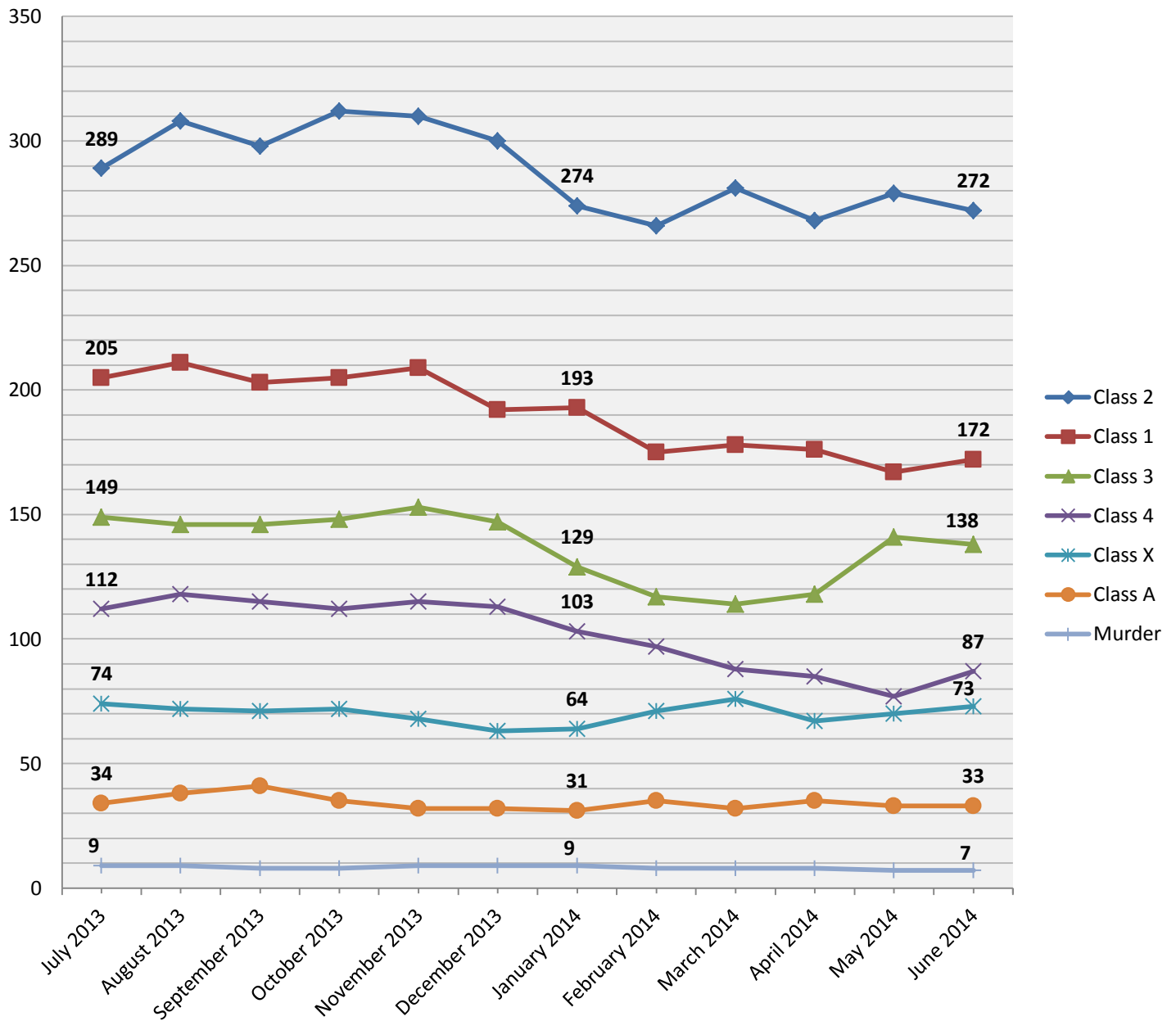


DJJ houses individuals committed to state custody through juvenile court delinquency proceedings as well as a small number of individuals tried as adults and convicted in criminal court sentenced to the DOC when under age 17.



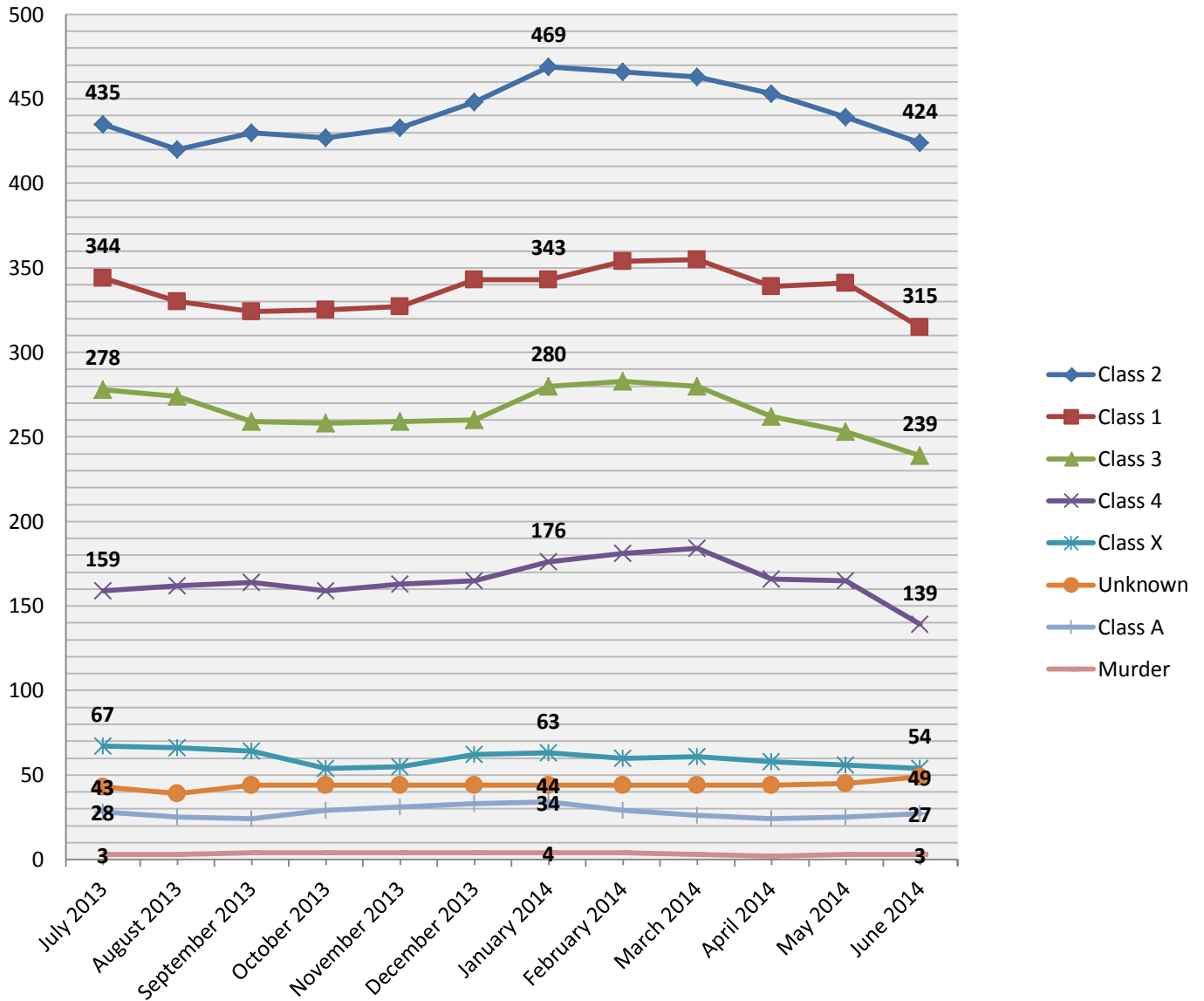
IDJJ houses individuals committed to state custody through juvenile court delinquency proceedings as well as a small number of individuals tried as adults and convicted in criminal court sentenced to the IDOC when under age 17.

IDJJ Institutional Population by Offense Class



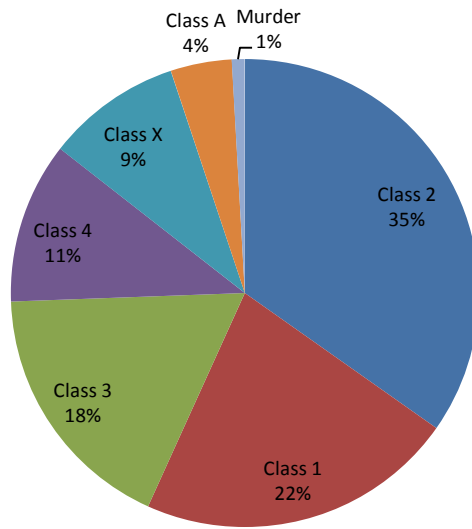
Note: The "Unknown" offense population for each month from July 2013 to June 2014 was 4 or fewer.
 The Class B offense population for each month from July 2013 to June 2014 was 2 or fewer.
 The Class C population for each month from July 2013 to June 2014 was 0.

IDJJ Aftercare/Parole Population by Offense Class

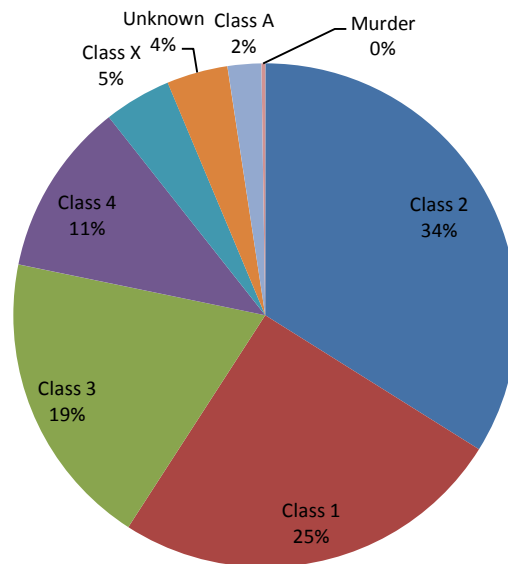


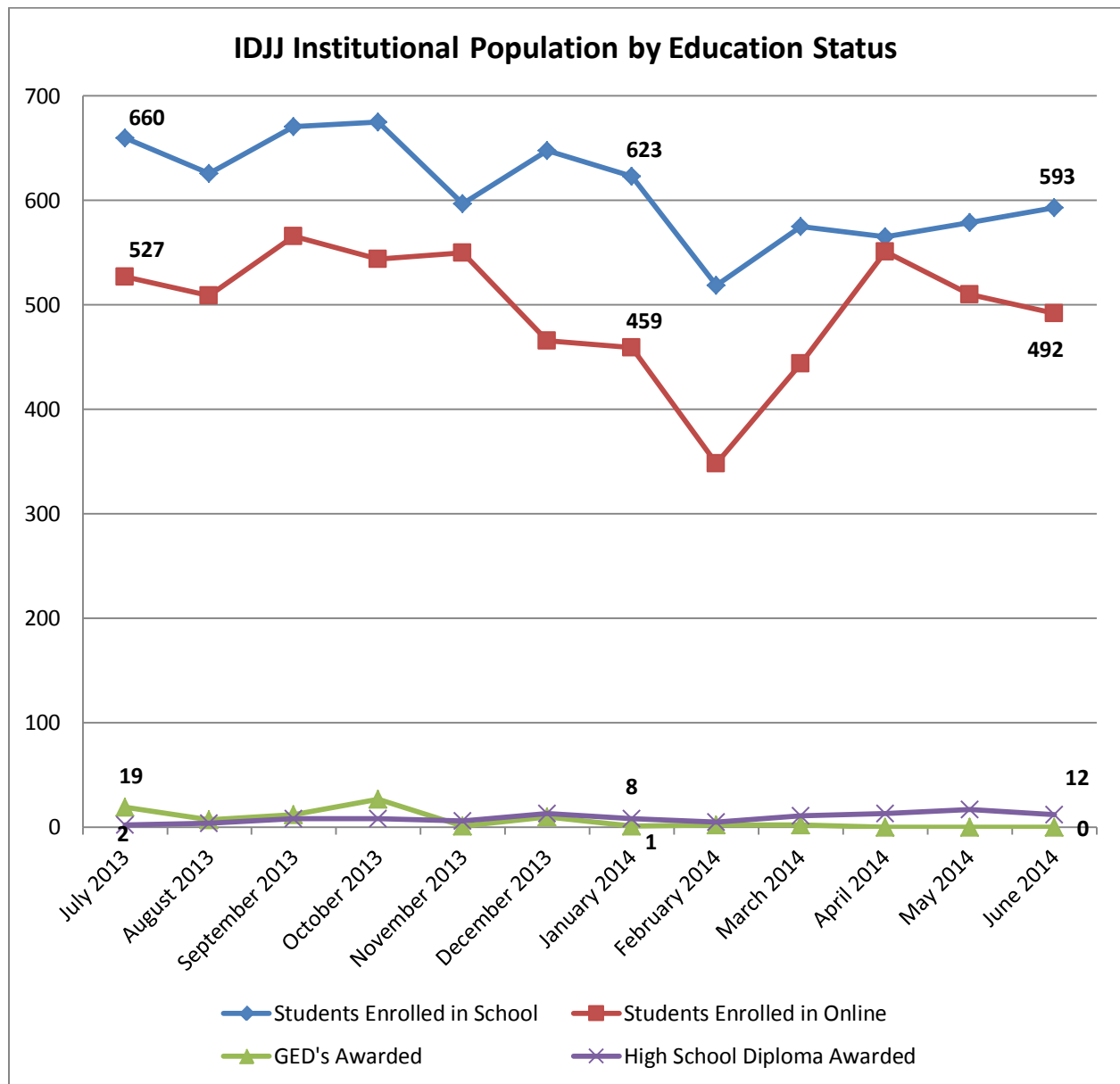
Note: The Class B offense population for each month from July 2013 to June 2014 was 2 or fewer.
The Class C population for each month from July 2013 to June 2014 was 0.

IDJJ Institutional Population by Offense Class
June 2014 n = 782



IDJJ Aftercare/Parole Population by Offense Class
June 2014 n = 1,250





Note: Students Enrolled in Online, GED's Awarded and High School Diploma Awarded are all subsets of Students Enrolled in School.