



**Monthly Report:
April 2024**

FY2024

Section 1: Population and Staffing Data

Table 1a: Population by Facility

	7/23	8/23	9/23	10/23	11/23	12/23	1/24	2/24	3/24	4/24
Chicago	29	36	36	35	40	39	41	40	37	41
Harrisburg	59	55	54	57	61	59	55	56	50	56
Pere Marquette	10	10	14	13	13	13	13	12	15	13
St. Charles	48	53	55	58	53	33	32	21	29	24
Warrenville	21	21	21	16	15	21	26	28	29	31
IDJJ Total	167	175	180	179	182	165	167	157	160	165

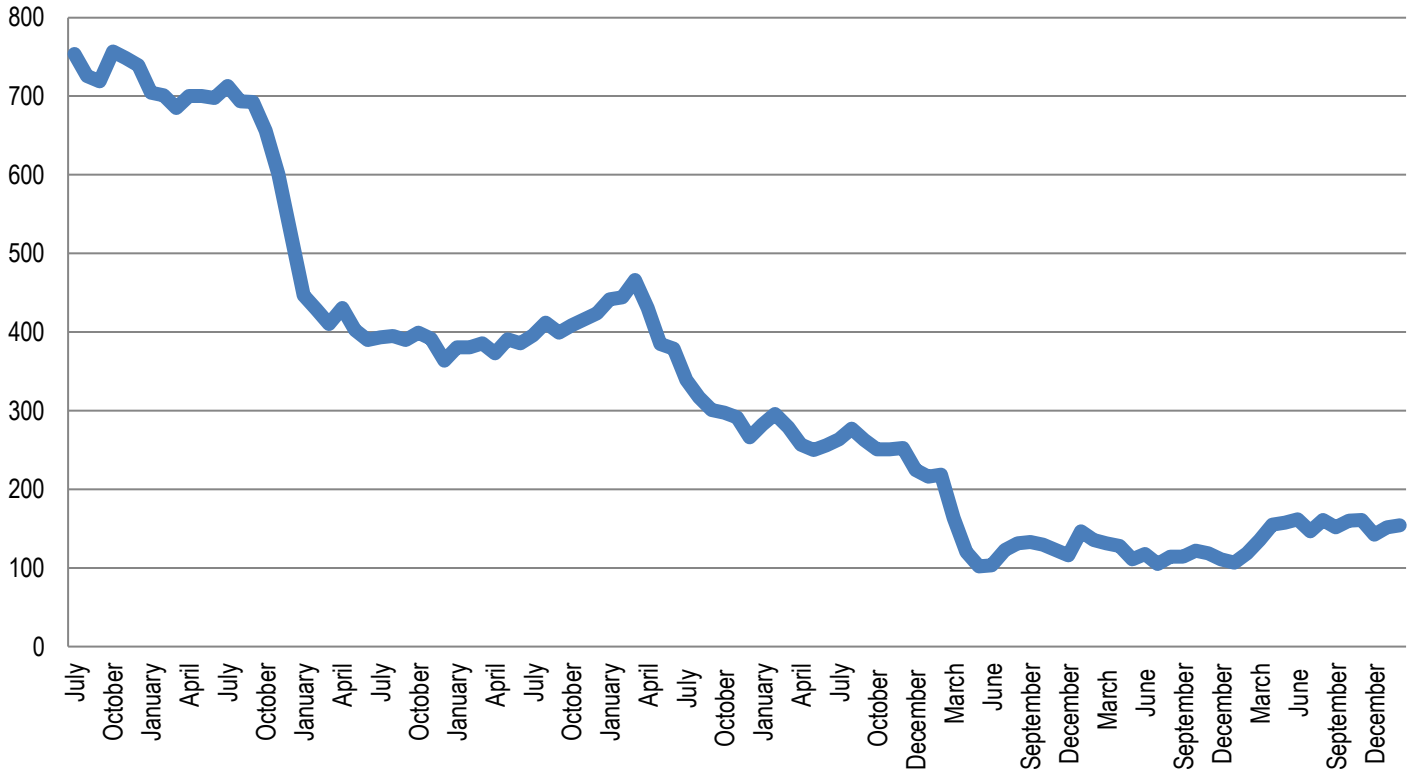
Table 1b: Average Daily Population by Facility

	7/23	8/23	9/23	10/23	11/23	12/23	1/24	2/24	3/24	4/24
Chicago	28.4	33.8	36.5	34.3	35.9	39.8	39.4	40.7	37.8	42.2
Harrisburg	58.5	61.3	54.9	55.8	57.6	58.9	56.4	54.1	54.4	54.4
Pere Marquette	10.2	9.8	10.9	12.7	12.3	12.9	12.3	13.5	13.2	12.8
St. Charles	53.1	53.2	55.0	58.5	57.5	40.7	35.4	24.6	25.4	24.8
Warrenville	18.7	22.1	20.7	19.5	16.1	19.3	23.2	26.8	28.5	28.0
IDJJ Total	168.8	180.3	178.0	180.9	179.5	171.6	166.6	159.7	159.3	162.2

Table 2: Security Staff Headcount by Facility

	7/23	8/23	9/23	10/23	11/23	12/23	1/24	2/24	3/24	4/24
Chicago	57	57	60	69	65	65	70	70		
Harrisburg	90	93	90	105	106	103	109	110		
Pere Marquette	39	41	40	43	41	41	43	40		
St. Charles	75	76	71	76	70	71	67	66		
Warrenville	48	44	43	49	50	50	62	60		
IDJJ Total	309	311	304	342	332	330	351	346		

Chart 1: Facility Populations on Last Day of Month Last Nine Fiscal Years



Section 2: Mental Health Data

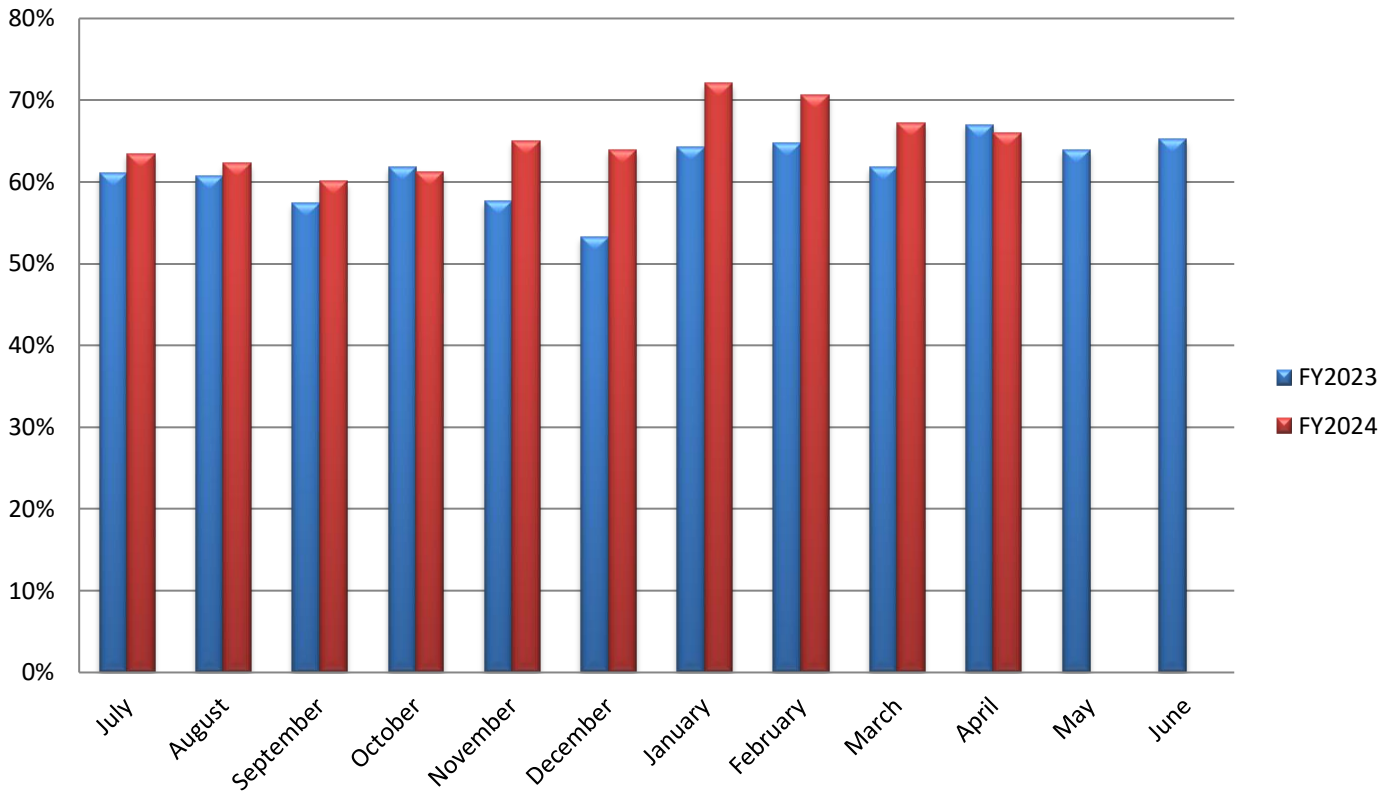
Table 5: Percent of Youth Psychotropic Medication

	7/23	8/23	9/23	10/23	11/23	12/23	1/24	2/24	3/24	4/24
Chicago	51.4%	66.7%	63.3%	55.9%	74.6%	75.4%	90.2%	86.0%	70.0%	71.9%
Harrisburg	72.0%	65.1%	65.1%	60.9%	71.3%	70.4%	61.4%	70.7%	62.7%	63.3%
Pere Marquette	75%	62.5%	62.5%	73.7%	77.8%	80%	68.8%	68.8%	67.7%	70.6%
St. Charles	53.8%	52.7%	53.5%	51.2%	64.6%	33.9%	65.9%	51.2%	57.5%	44.4%
Warrenville	75%	71.1%	57.8%	100%	80%	77.8%	81.8%	73.5%	85.7%	86.8%
IDJJ Average	63.4%	62.2%	60.0%	61.2%	65.0%	63.9%	72.0%	70.6%	67.2%	66.0%

Table 7: Distribution of Mental Health Levels

	Mental Health Level 0	Mental Health Level 1	Mental Health Level 2	Mental Health Level 3	Mental Health Level 3.5	Mental Health Level 4
July	0.0%	30.6%	66.3%	2.6%	0.0%	0.5%
August	0.0%	34.9%	60.5%	4.7%	0.0%	0.0%
September	0.0%	31.8%	61.8%	6.5%	0.0%	0.0%
October	0.0%	42.1%	53.5%	4.5%	0.0%	0.0%
November	0.0%	36.1%	60.6%	2.9%	0.5%	0.0%
December	0.0%	36.3%	58.8%	4.9%	0.0%	0.0%
January	0.0%	35.5%	61.4%	3.0%	0.0%	0.0%
February	0.0%	37.0%	59.2%	3.8%	0.0%	0.0%
March	0.0%	38.3%	56.1%	5.6%	0.0%	0.0%
April	0.0%	35.6%	58.4%	5.9%	0.0%	0.0%
IDJJ Average	0.0%	35.8%	59.7%	4.4%	0.1%	0.1%

Percent of Youth on Psychotropic Medication by Fiscal Year



Section 3: Substance Abuse Treatment Data

Table 9: Number of Treatment Participants

	7/23	8/23	9/23	10/23	11/23	12/23	1/24	2/24	3/24	4/24
Chicago	12	11	11	7	12	12	9	13	11	8
Harrisburg	13	19	19	25	21	23	18	19	22	17
Pere Marquette	1	4	4	2	4	4	6	6	4	5
St. Charles	3	4	4	5	4	4	2	3	3	2
Warrenville	4	7	5	6	5	9	10	10	7	8
IDJJ Total	33	45	43	47	46	52	45	51	47	40

Table 10: Average Length of Stay for Completers

	7/23	8/23	9/23	10/23	11/23	12/23	1/24	2/24	3/24	4/24
Chicago	102	91	91	83	64	81	-	-	103	152
Harrisburg	85	60	60	58	-	72	-	86	89	
Pere Marquette	-	-	-	-	-	-	90	90	-	105
St. Charles	-	-	-	90	-	-	-	-	-	47
Warrenville	90	-	-	-	-	-	-	90	-	92
IDJJ Average	90	75	75	81	64	78	90	89	96	106

Table 11: Percent of Discharges by Reason

	7/23	8/23	9/23	10/23	11/23	12/23	1/24	2/24	3/24	4/24
Successful Completion	66.7%	33.3%	33.3%	52.4%	20%	38.9%	12.5%	40%	60%	50%
Behavioral Discharge	0%	0%	0%	0%	20%	0%	0%	0%	0%	0%
Youth Released	22.2%	55.6%	55.6%	38.1%	40%	55.6%	75%	40%	40%	50%
Other Discharge	11.1%	11.1%	11.1%	9.5%	20%	5.6%	12.5%	20%	0%	0%

Table 12: Primary Substance Abused

	7/23	8/23	9/23	10/23	11/23	12/23	1/24	2/24	3/24	4/24
Marijuana	63.3%	67.4%	67.4%	71.9%	65.7%	63.4%	61.4%	63.3%	43.2%	50%
Alcohol	13.3%	2.3%	2.3%	6.3%	11.4%	12.2%	6.8%	4.1%	6.8%	0%
Opioids	13.3%	9.3%	9.3%	0%	5.7%	7.3%	9.1%	12.2%	18.2%	15.6%
Other Drugs	10.0%	20.9%	20.9%	21.9%	17.1%	17.1%	22.7%	20.4%	31.8%	34.3%
No Diagnosis	0%	0%	0%	0%	0%	0%	0%	0%	0%	0%

Chart 5: Number of Treatment Participants by Facility

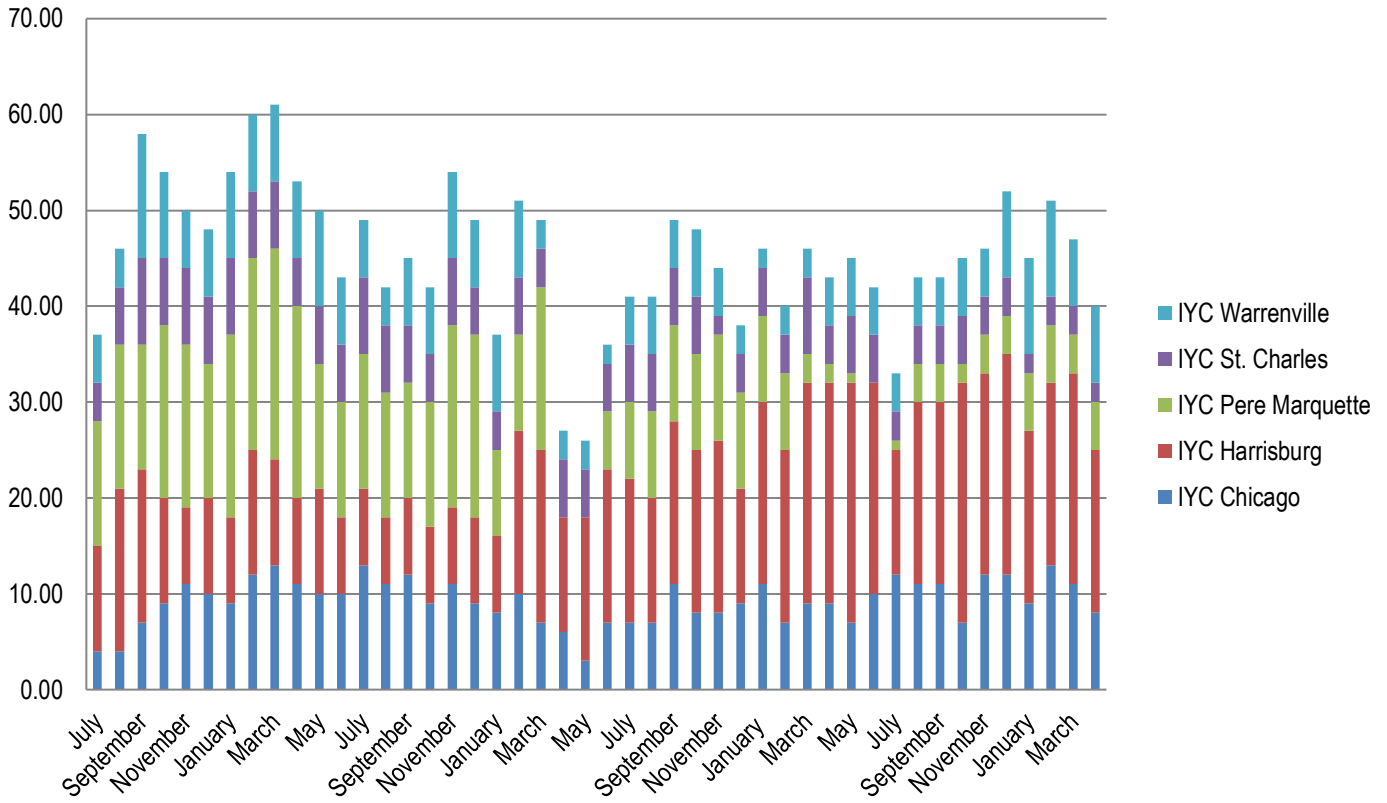
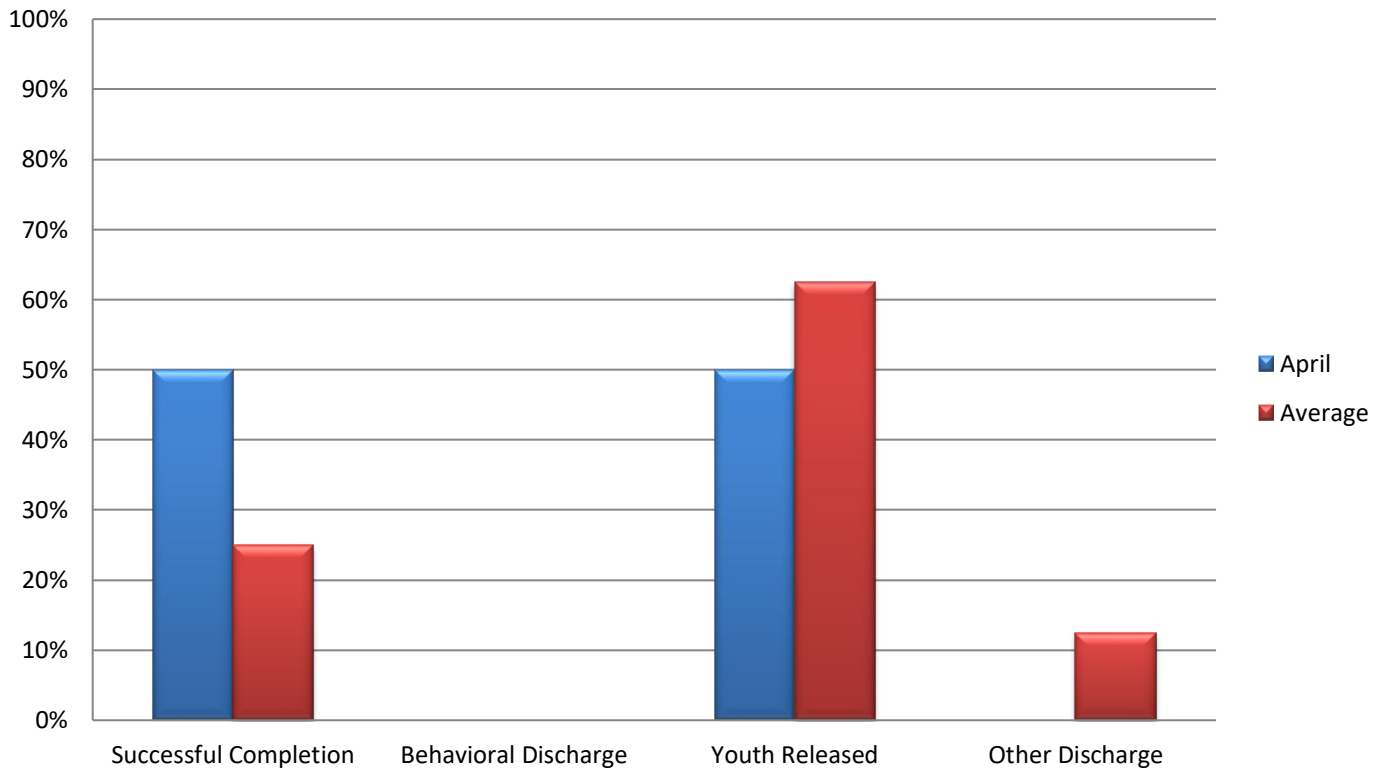


Chart 6: Discharges by Reason



Section 4: Education Data

Table 13: Students Enrolled in School

	7/23	8/23	9/23	10/23	11/23	12/23	1/24	2/24	3/24	4/24
Chicago	16	21	17	19	24	25	31	24	24	24
Harrisburg	60	70	61	72	57	64	61	58	62	56
Pere Marquette	7	5	7	10	8	9	8	7	8	8
St. Charles	24	25	33	31	22	15	-	-	-	-
Warrenville	16	18	20	15	15	21	25	26	30	29
IDJJ Total	123	139	138	147	126	134	125	115	124	117

Table 14: Teachers Employed

	7/23	8/23	9/23	10/23	11/23	12/23	1/24	2/24	3/24	4/24
Chicago	7	7	7	6	6	6	7	7	7	7
Harrisburg	11	11	11	11	11	11	11	10	10	10
Pere Marquette	6	6	6	6	6	6	6	6	6	6
St. Charles	5	5	5	5	5	5	1	1	1	1
Warrenville	4	3	3	3	3	3	6	6	6	6
IDJJ Total	33	32	32	31	31	31	31	30	30	30

Table 15: Student to Teacher Ratio

	1/24	2/24	3/24	4/24
Chicago	4.4	3.4	3.4	3.4
Harrisburg	5.5	5.8	6.2	5.6
Pere Marquette	1.3	1.2	1.3	1.3
St. Charles	-	-	-	-
Warrenville	4.2	4.3	5	4.8
IDJJ Average	4.0	3.8	4.1	3.9

Table 17: Overall Diplomas Awarded

	7/23	8/23	9/23	10/23	11/23	12/23	1/24	2/24	3/24	4/24	Total
Chicago	0	0	0	1	0	0	0	3	1	4	9
Harrisburg	1	1	0	0	2	0	1	4	1	2	12
Pere Marquette	0	1	3	1	0	1	1	3	1	1	11
St. Charles	1	2	0	4	1	0	-	-	-	-	8
Warrenville	2	1	0	0	1	0	0	1	1	2	8
IDJJ Total	4	5	3	6	4	1	2	11	4	9	48

Table 18: Percent of Special Education Students

	7/23	8/23	9/23	10/23	11/23	12/23	1/24	2/24	3/24	4/24
Chicago	56.3%	33.3%	47.1%	57.9%	58.3%	56.0%	35.5%	37.5%	41.7%	33.3%
Harrisburg	50.0%	50%	42.6%	36.1%	56.1%	50.0%	49.2%	44.9%	41.9%	53.6%
Pere Marquette	71.4%	80%	42.9%	30%	37.5%	22.2%	50%	71.4%	25%	25%
St. Charles	20.8%	40%	42.4%	51.6%	40.9%	53.3%	-	-	-	-
Warrenville	68.8%	61.1%	60%	80%	66.7%	57.1%	64%	57.7%	53.3%	62.1%
IDJJ Total	48.8%	48.2%	45.7%	46.3%	54.0%	50.7%	48.8%	47.8%	43.5%	49.6%

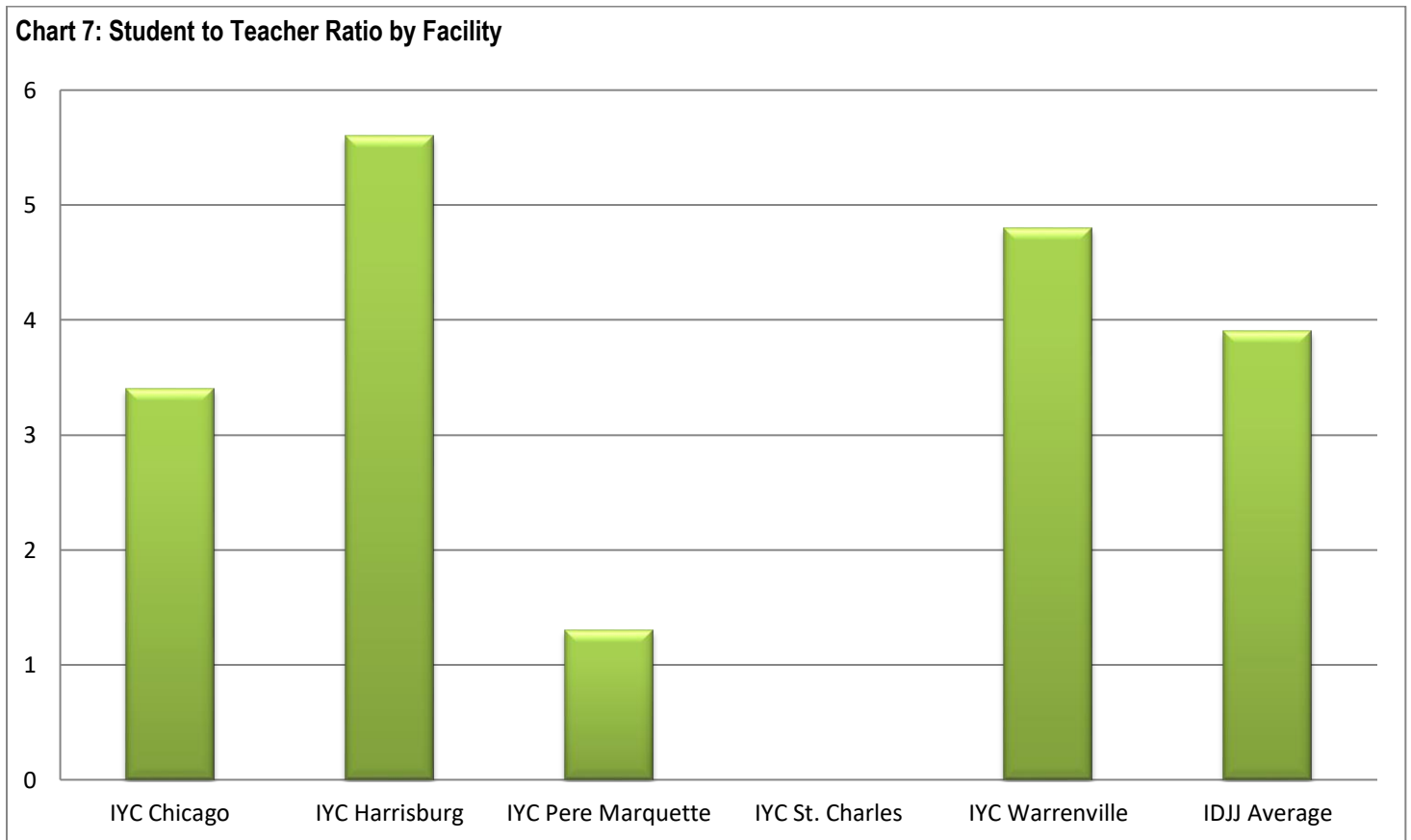
Table 20: Youth in Continuing Education

	Post-Secondary	Collegiate
<i>IYC Chicago</i>	0	0
<i>IYC Harrisburg</i>	0	6
<i>IYC Pere Marquette</i>	0	0
<i>IYC St. Charles</i>	0	0
<i>IYC Warrenville</i>	0	0
IDJJ Total	0	6

Table 21: Number and Percent of Cancelled Whole School Days

	Number	Percent
<i>IYC Chicago</i>	0	0%
<i>IYC Harrisburg</i>	0	0%
<i>IYC Pere Marquette</i>	0	0%
<i>IYC St. Charles</i>	0	0%
<i>IYC Warrenville</i>	0	0%
IDJJ Total	0	0%

Chart 7: Student to Teacher Ratio by Facility



Section 5: Reportable Incident Data

Table 21a: Number of Reportable Incidents

	7/23	8/23	9/23	10/23	11/23	12/23	1/24	2/24	3/24	4/24
Chicago	6	11	6	8	9	15	6	8	8	8
Harrisburg	37	39	26	32	26	32	39	31	23	34
Pere Marquette	6	10	7	12	2	1	5	3	2	2
St. Charles	11	23	20	24	24	11	8	4	6	6
Warrenville	7	12	7	5	6	6	6	9	15	17
IDJJ Total	67	95	66	81	67	65	64	55	54	67

Table 21b: Rate of Reportable Incidents per 100 Youth

	7/23	8/23	9/23	10/23	11/23	12/23	1/24	2/24	3/24	4/24	Avg.
Chicago	21.1	32.5	16.4	23.3	25.1	37.7	15.2	19.7	21.2	18.9	23.1
Harrisburg	63.2	63.6	47.4	57.3	45.1	54.3	69.1	57.3	42.3	62.5	56.2
Pere Marquette	58.8	102.0	64.2	94.5	16.3	7.8	40.7	22.2	15.2	15.6	43.7
St. Charles	20.7	43.2	36.4	41.0	41.7	27.0	22.6	16.3	23.6	24.2	29.7
Warrenville	37.4	54.3	33.8	25.6	37.3	31.1	25.9	33.6	52.6	60.7	39.2
IDJJ Average	39.7	52.7	37.1	44.8	37.3	37.9	38.4	34.4	33.9	41.3	39.8

Table 22a: Number of Youth on Youth Assaults

	7/23	8/23	9/23	10/23	11/23	12/23	1/24	2/24	3/24	4/24
Chicago	2	4	0	2	2	6	3	1	5	1
Harrisburg	15	20	10	10	8	10	14	7	5	9
Pere Marquette	3	5	1	4	1	0	4	1	1	1
St. Charles	4	9	9	6	2	6	3	0	1	2
Warrenville	1	0	3	2	2	2	0	3	4	2
IDJJ Total	25	38	23	24	15	24	24	12	16	15

Table 22b: Rate of Youth on Youth Assaults per 100 Youth

	7/23	8/23	9/23	10/23	11/23	12/23	1/24	2/24	3/24	4/24	Avg.
Chicago	7.0	11.8	0	5.8	5.6	15.1	7.6	2.5	13.2	2.4	7.1
Harrisburg	25.6	32.6	18.2	17.9	13.9	17.0	24.8	12.9	9.2	16.5	18.9
Pere Marquette	29.4	51.0	9.2	31.5	8.1	0	32.5	7.4	7.6	7.8	18.5
St. Charles	7.5	16.9	16.4	10.3	3.5	14.7	8.5	0	3.9	8.1	9.0
Warrenville	5.3	0	14.5	10.3	12.4	10.4	0.0	11.2	14.0	7.1	8.5
IDJJ Average	14.8	21.1	12.9	13.3	8.4	14.0	14.4	7.5	10.0	9.2	12.6

Table 23a: Number of Youth Fights

	7/23	8/23	9/23	10/23	11/23	12/23	1/24	2/24	3/24	4/24
Chicago	2	3	3	5	4	5	1	3	2	5
Harrisburg	14	13	14	17	14	22	25	21	14	21
Pere Marquette	2	2	1	5	1	0	0	1	0	1
St. Charles	7	11	11	17	17	3	3	2	2	3
Warrenville	4	8	2	0	3	2	3	3	10	10
IDJJ Total	29	37	31	44	39	32	32	30	28	40

Table 23b: Rate of Youth Fights per 100 Youth

	7/23	8/23	9/23	10/23	11/23	12/23	1/24	2/24	3/24	4/24	Avg.
Chicago	7.0	8.9	8.2	14.6	11.1	12.6	2.6	7.4	5.3	11.8	9.0
Harrisburg	23.9	21.2	25.5	30.5	24.3	37.4	44.3	38.8	25.7	38.6	31.0
Pere Marquette	19.6	20.4	9.2	39.4	8.1	0	0	7.4	0	7.8	11.2
St. Charles	13.2	20.7	20	29.1	29.6	7.4	8.5	8.1	7.9	12.1	15.7
Warrenville	21.4	36.2	9.7	0.0	18.6	10.4	12.9	11.2	35.1	35.7	19.1
IDJJ Average	17.2	20.5	17.4	24.3	21.7	18.7	19.2	18.8	17.6	24.7	20.0

Table 24a: Number of Youth on Staff Assaults

	7/23	8/23	9/23	10/23	11/23	12/23	1/24	2/24	3/24	4/24
Chicago	2	4	3	1	3	4	2	4	1	2
Harrisburg	8	6	2	5	4	0	0	3	4	4
Pere Marquette	1	3	5	3	0	1	1	1	1	0
St. Charles	0	3	0	1	5	2	2	2	3	1
Warrenville	2	4	2	3	1	2	3	3	1	5
IDJJ Total	13	20	12	13	13	9	8	13	10	12

Table 24b: Rate of Youth on Staff Assaults per 100 Youth

	7/23	8/23	9/23	10/23	11/23	12/23	1/24	2/24	3/24	4/24	Avg.
Chicago	7.0	11.8	8.2	2.9	8.4	10.1	5.1	9.8	2.6	4.7	7.1
Harrisburg	13.7	9.8	3.6	9.0	6.9	0	0	5.5	7.4	7.4	6.3
Pere Marquette	9.8	30.6	45.9	23.6	0.0	7.8	8.1	7.4	7.6	0	14.1
St. Charles	0	5.6	0	1.7	8.7	4.9	5.6	8.1	11.8	4.0	5.0
Warrenville	10.7	18.1	9.7	15.4	6.2	10.4	12.9	11.2	3.5	17.9	11.6
IDJJ Average	7.7	11.1	6.7	7.2	7.2	5.2	4.8	8.1	6.3	7.4	7.2

Chart 9: Rate of Reportable Incidents Per 100 Youth

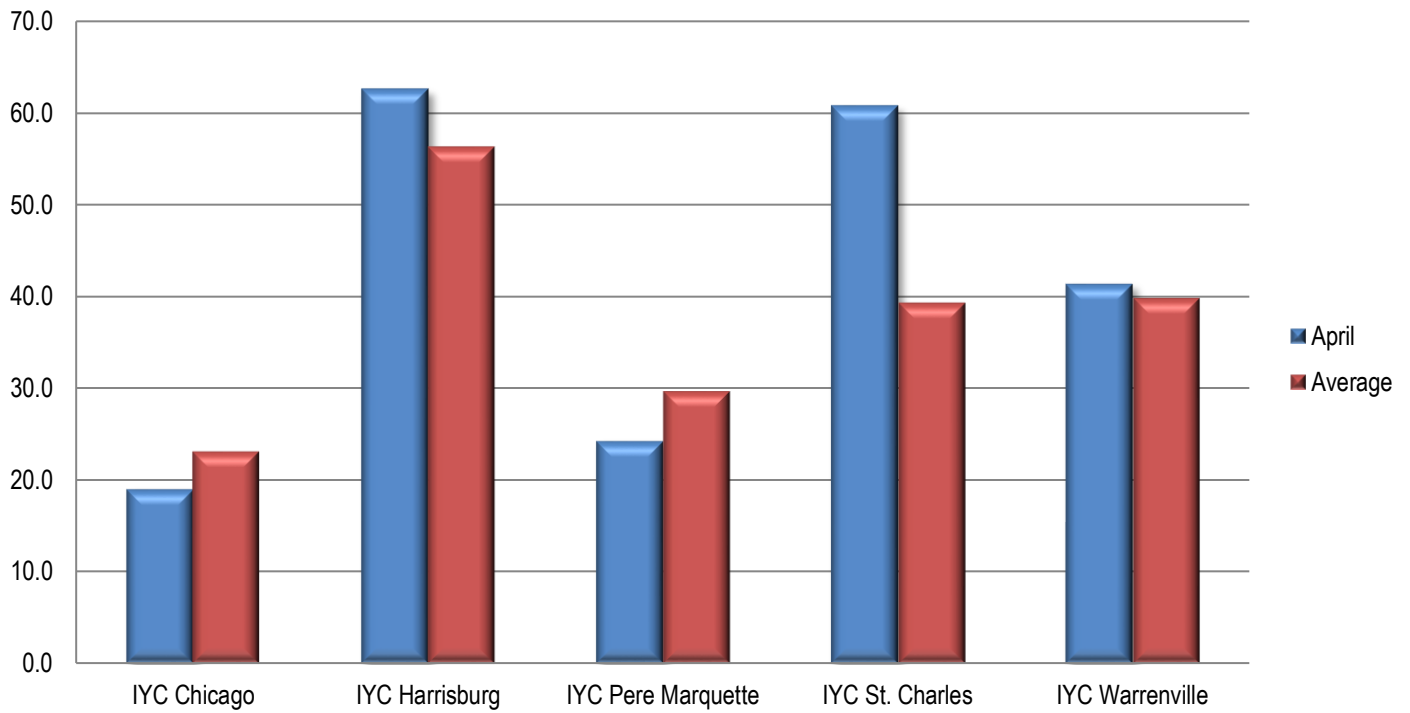
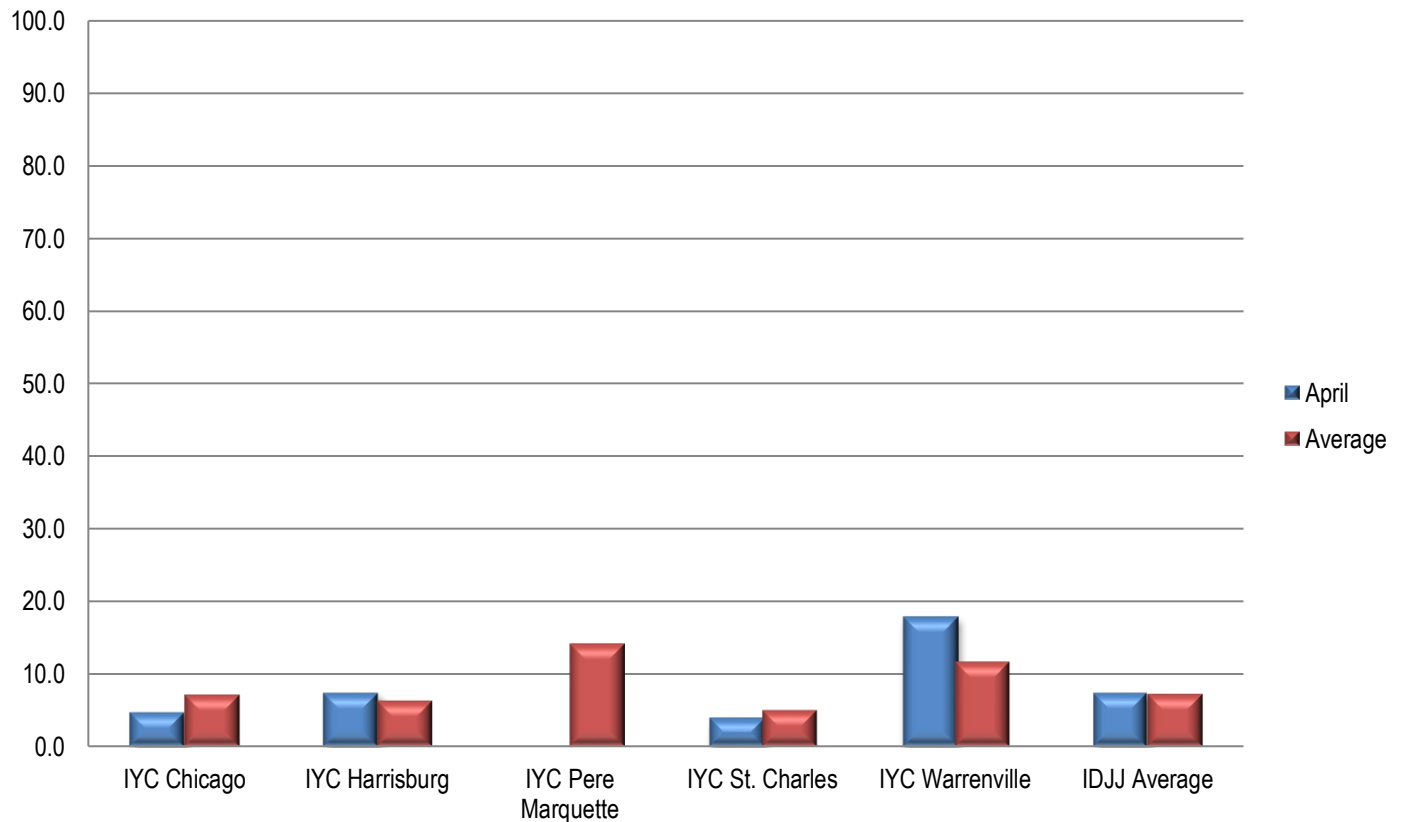


Chart 10: Rate of Youth on Staff Assault Per 100 Youth



Section 6: Indicator Data

Table 25: Uses of Chemical Restraints

	7/23	8/23	9/23	10/23	11/23	12/23	1/24	2/24	3/24	4/24
Chicago	1	0	1	1	0	0	0	0	1	0
Harrisburg	2	1	0	1	0	0	1	2	0	2
Pere Marquette	0	0	0	1	0	0	0	0	0	0
St. Charles	0	3	2	6	10	1	1	1	0	1
Warrenville	0	0	0	0	1	1	0	0	0	1
IDJJ Total	3	4	3	9	11	2	2	3	1	4

Table 26: Uses of Mechanical Restraints

	7/23	8/23	9/23	10/23	11/23	12/23	1/24	2/24	3/24	4/24
Chicago	1	6	4	1	2	3	1	2	2	2
Harrisburg	21	13	2	17	9	10	11	16	6	3
Pere Marquette	2	3	4	1	0	2	1	1	1	0
St. Charles	1	2	3	4	1	1	0	1	1	1
Warrenville	11	13	9	9	4	1	3	2	8	10
IDJJ Total	36	37	22	32	16	17	16	22	18	16

Uses of chemical and mechanical restraints have varied throughout the year, although the use in the current year is much lower than years past. More important than how frequent they are is whether they are used according to policy and for appropriate reasons.

Section 7: Confinement Information

Table 28a: Use of Behavioral Holds

	7/23	8/23	9/23	10/23	11/23	12/23	1/24	2/24	3/24	4/24
Chicago	1	9	12	31	17	34	5	9	8	9
Harrisburg	51	50	27	46	44	67	46	54	20	40
Pere Marquette	6	3	1	20	1	3	3	3	1	4
St. Charles	22	49	54	84	71	14	10	10	18	10
Warrenville	43	73	43	29	32	23	39	38	55	73
IDJJ Total	123	184	137	209	165	141	103	114	102	136

Table 28b: Rate of Behavioral Hold

	7/23	8/23	9/23	10/23	11/23	12/23	1/24	2/24	3/24	4/24
Chicago	4	27	33	90	47	85	13	22	21	21
Harrisburg	87	82	49	82	76	114	82	100	37	74
Pere Marquette	59	31	9	157	8	23	24	22	8	31
St. Charles	41	92	98	144	123	34	28	41	71	40
Warrenville	230	330	208	149	199	119	168	142	193	261
IDJJ Average	73	102	77	116	92	82	62	71	64	84

Table 28c: Average Length of Behavioral Hold

	7/23	8/23	9/23	10/23	11/23	12/23	1/24	2/24	3/24	4/24
Chicago	60	45	181	242	623	138	96	81	163	38
Harrisburg	127	145	128	167	154	125	145	139	122	145
Pere Marquette	83	92	64	122	48	43	53	62	60	73
St. Charles	88	69	122	158	155	126	185	94	175	179
Warrenville	131	117	113	66	84	97	122	105	127	147
IDJJ Average	119	108	125	156	189	122	135	117	137	139

Table 29: Use of Crisis Care

	7/23	8/23	9/23	10/23	11/23	12/23	1/24	2/24	3/24	4/24
Chicago	-	3	-	-	-	2	-	-	-	-
Harrisburg	-	-	-	2	-	-	-	-	-	1
Pere Marquette	1	-	6	2	-	-	1	2	1	-
St. Charles	2	1	-	-	-	-	-	-	5	-
Warrenville	9	2	8	10	1	-	1	-	-	-
IDJJ Total	12	6	14	14	1	2	2	2	6	1

Table 30: Use of Medical Hold

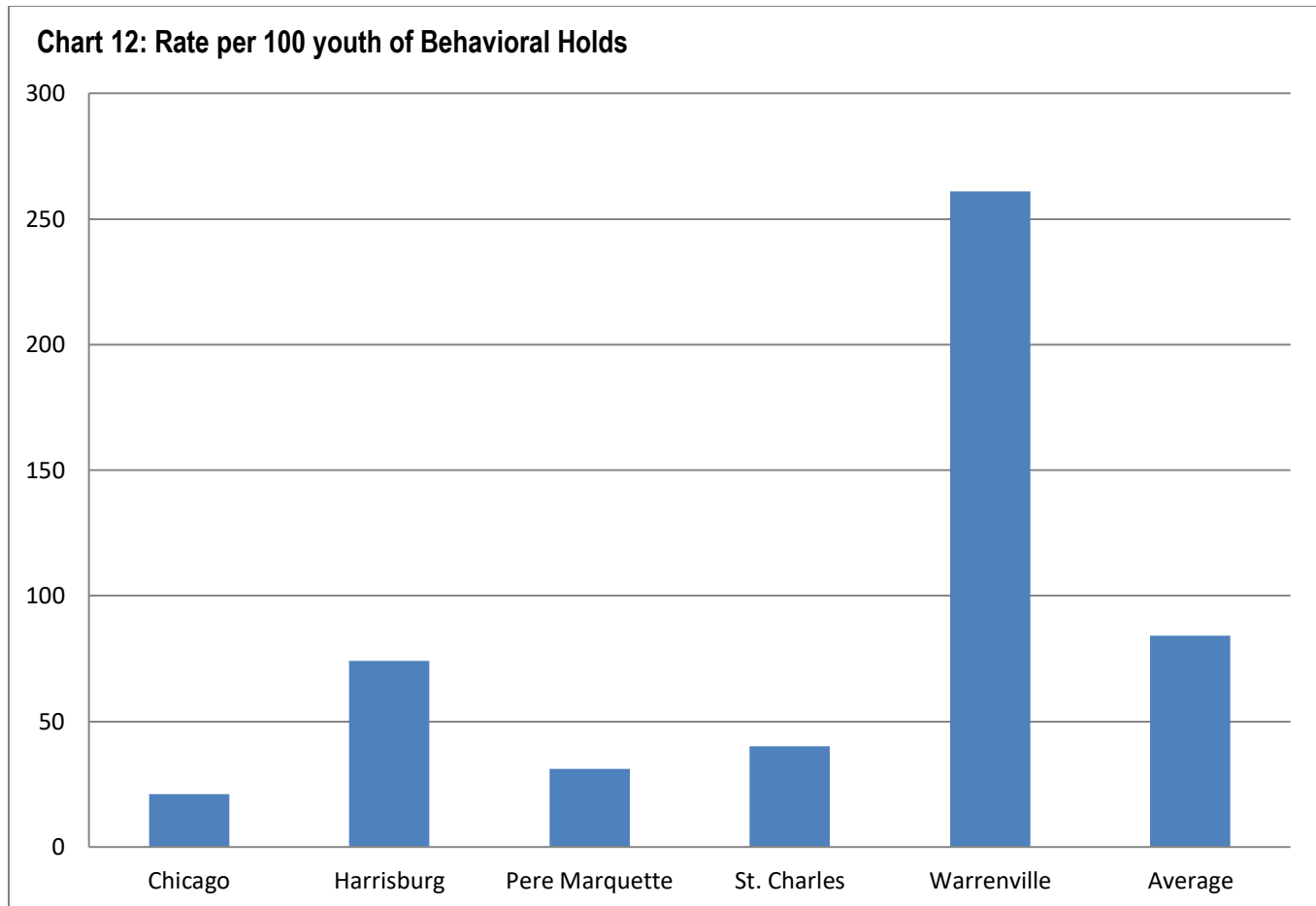
	7/23	8/23	9/23	10/23	11/23	12/23	1/24	2/24	3/24	4/24
Chicago	-	-	-	-	-	-	-	-	-	-
Harrisburg	-	-	-	-	-	-	-	-	-	-
Pere Marquette	-	-	-	-	-	-	-	-	-	-
St. Charles	-	-	2	2	10	4	7	1	-	1
Warrenville	-	-	-	-	3	-	1	-	-	-
IDJJ Average	0	0	2	2	13	4	8	1	0	1

Table 31: Use of Administrative Hold

	7/23	8/23	9/23	10/23	11/23	12/23	1/24	2/24	3/24	4/24
Chicago	-	-	7	7	13	-	-	-	-	-
Harrisburg	-	80	4	33	12	46	2	-	-	-
Pere Marquette	-	-	-	-	-	-	-	-	-	-
St. Charles	1	14	2	2	94	31	-	-	-	6
Warrenville	162	267	325	83	87	55	89	119	128	31
IDJJ Total	163	361	338	125	206	132	91	119	128	37

Table 32: Use of Investigative Status

	7/23	8/23	9/23	10/23	11/23	12/23	1/24	2/24	3/24	4/24
Chicago	-	8	-	-	1	-	-	-	-	-
Harrisburg	-	-	-	-	-	-	-	-	-	-
Pere Marquette	-	-	-	-	-	-	-	-	-	-
St. Charles	-	-	-	-	-	-	-	-	-	-
Warrenville	-	2	5	-	-	22	4	4	6	1
IDJJ Total	0	10	5	0	1	22	4	4	6	1



Section 8: Aftercare Data

Table 33: Youth Monitored by Aftercare

	7/23	8/23	9/23	10/23	11/23	12/23	1/24	2/24	3/24	4/24
Total Number of Youth Assigned to Aftercare	397	420	413	404	412	408	408	406	408	403
Youth in Community	180	194	190	192	195	204	208	216	211	208
Youth in Facilities	126	134	133	128	136	122	120	110	109	111
Youth with Pending Criminal Cases	81	82	75	72	72	71	71	71	75	73
Youth with Warrants and Out of State	10	10	15	12	9	11	9	9	13	11

Table 34: Caseloads in Aftercare (Average per Specialist)

	7/23	8/23	9/23	10/23	11/23	12/23	1/24	2/24	3/24	4/24
Youth Assigned to Specialist	7.5	8.0	8.1	8.0	8.3	8.2	8.2	8.2	8.3	8.0
Youth in Community	4.4	4.7	4.8	4.8	4.9	5.1	5.2	5.4	5.5	5.2
Youth in Facilities	3.1	3.3	3.3	3.2	3.4	3.1	3.0	2.8	2.8	2.8

Table 35: Average Specialist Caseload by Aftercare Office – April 2024

	Number of Specialists	Number of Youth	Average Caseload	Number of Youth in Community	Average Caseload in Community
Chicago	7	61	8.7	39	5.6
Chicago Heights	3	18	6	16	5.3
Aurora	2	18	9	13	6.5
Rockford	4	32	8	18	4.5
Peoria	4	44	11	30	7.5
Belleville	7	56	8	35	5
Champaign	4	37	9.3	17	4.3
Springfield	2	14	7	11	5.5
Placement	6	39	6.5	29	4.8
IDJJ Total	40	319	8.0	208	5.2

Table 36: Specialist Contact with Youth by Aftercare Office – April 2024

	Number of Overall Contacts	Contacts per Youth	Contacts with Youth in Community	Contacts per Youth in Community
Chicago	123	2.0	113	2.9
Chicago Heights	40	2.2	36	2.3
Aurora	57	3.2	51	3.9
Rockford	132	4.1	89	4.9
Peoria	140	3.2	115	3.8
Belleville	154	2.8	116	3.3
Champaign	131	3.5	119	7.0
Springfield	39	2.8	31	2.8
Placement	168	4.3	150	5.2
IDJJ Total	984	3.1	820	3.9

Table 37a: Parole Revocations

	Parole Revocations Heard	Revocations Approved	Revocations Denied	Hearings Continued
<i>July</i>	18	14	1	3
<i>August</i>	10	5	5	0
<i>September</i>	10	7	3	0
<i>October</i>	6	4	2	0
<i>November</i>	14	11	2	1
<i>December</i>	6	5	1	0
<i>January</i>	12	8	4	0
<i>February</i>	1	1	0	0
<i>March</i>	8	5	3	0
<i>April</i>	9	6	3	0
IDJJ Average	9.4	6.6	2.4	0.4

Table 37b: Parole Revocation Rates

	Percent of Revocations Approved	Percent of Revocations Denied	Percent of Hearings Continued
<i>July</i>	77.8%	5.6%	16.7%
<i>August</i>	50%	50%	0%
<i>September</i>	70%	30%	0%
<i>October</i>	66.7%	33.3%	0%
<i>November</i>	78.6%	14.3%	7.1%
<i>December</i>	83.3%	16.7%	0%
<i>January</i>	66.7%	33.3%	0%
<i>February</i>	100%	0%	0%
<i>March</i>	62.5%	37.5%	0%
<i>April</i>	66.7%	33.3%	0%
IDJJ Average	72.2%	25.4%	2.4%

With lower numbers of admission for technical parole violators, the numbers of parole revocation hearings held monthly has greatly decreased compared to previous years.

Section 9: Population Stock/Flow

Table 38: Institutional Stock/Flow

	7/23	8/23	9/23	10/23	11/23	12/23	1/24	2/24	3/24	4/24
Number of Admissions per Month	33	50	35	32	34	22	32	19	36	31
Percent of Admissions Parole Violators	21.2%	12%	5.7%	12.5%	11.8%	9.1%	18.8%	5.3%	13.9%	19.4%
Number of Facility Exits per Month	32	43	30	32	33	40	33	26	34	25
Percent of Exits to Aftercare Supervision	96.9%	97.7%	90%	84.4%	84.8%	87.5%	90.9%	100%	97.1%	88%

Table 39: Aftercare Stock/Flow

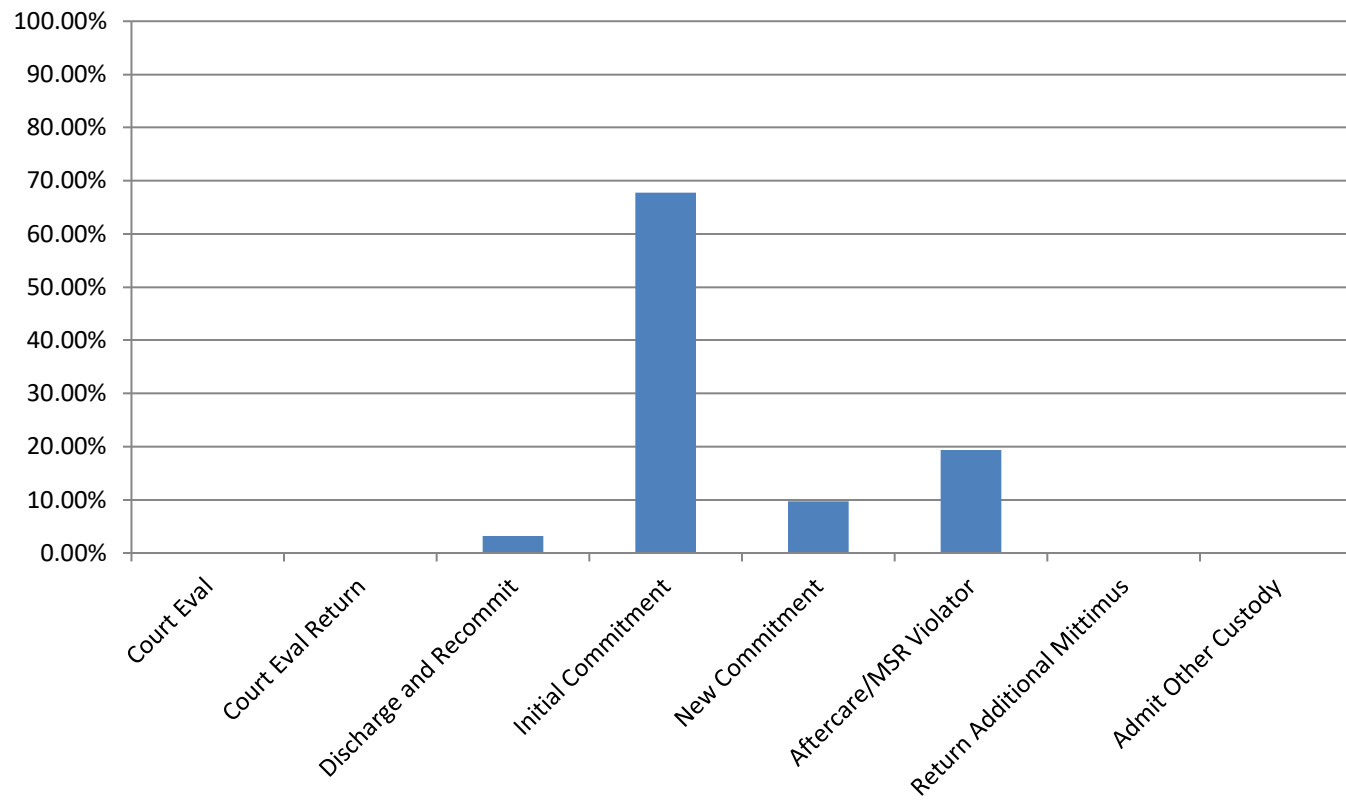
	7/23	8/23	9/23	10/23	11/23	12/23	1/24	2/24	3/24	4/24
Number of New Supervised Youth	31	43	28	27	30	35	32	27	34	25
Number of Exits from Aftercare	23	17	24	21	16	20	16	16	22	21

Table 40: Admissions to Facilities by Type

	April 2024	
	Number	Percent
Court Evaluation	0	0%
Court Evaluation Return	0	0%
Discharged and Recommitted	1	3.2%
Initial Commitment	21	67.7%
New Commitment	3	9.7%
Aftercare/MSR Violator	6	19.4%
Return Additional Mittimus	0	0%
Admit from Other Custody	0	0%
Total	31	

The decrease in DJJ populations is a direct effect of both decreasing court admissions, decreasing admissions for technical violations, and decreases in length of stay during the fiscal year. Additionally, rates and numbers of discharges from Aftercare have increased as well, which has helped those numbers stay lower as well, which provides fewer youth to be readmitted into facilities. Looking at the types of admissions to DJJ, a greater percent of youth are initial commitments than in previous years.

Chart 13: Admission Types to Facility, April 2024



Section 10: TRD Data for April 2024

Table 41: Adjustments by Facility

	Reductions	Extensions
<i>IYC Chicago</i>	92	14
<i>IYC Harrisburg</i>	86	22
<i>IYC Pere Marquette</i>	39	1
<i>IYC St. Charles</i>	15	17
<i>IYC Warrenville</i>	81	14
Total	313	68

Table 42: Types of Adjustments Used

	CHI	HRG	PER	STC	WRV	DJJ Overall
<i>BARJ Reduction</i>	0	1	0	0	0	1
<i>Delinquent Program Reduction</i>	0	0	1	0	5	6
<i>Ed/Voc Reduction</i>	12	4	21	1	43	81
<i>Grade Level Reduction</i>	6	4	1	0	4	15
<i>JSO Completion Reduction</i>	0	0	0	0	0	0
<i>No Maj. Sanc. Reductions</i>	7	14	3	1	6	31
<i>Other Tx Reduction</i>	0	6	0	0	1	7
<i>SA Completion Reduction</i>	2	7	1	1	10	21
<i>YASI Goal Reduction</i>	65	50	12	12	12	151
<i>Discipline Extension</i>	14	22	1	17	14	68

Chart 14: Types of Adjustments used by Agency

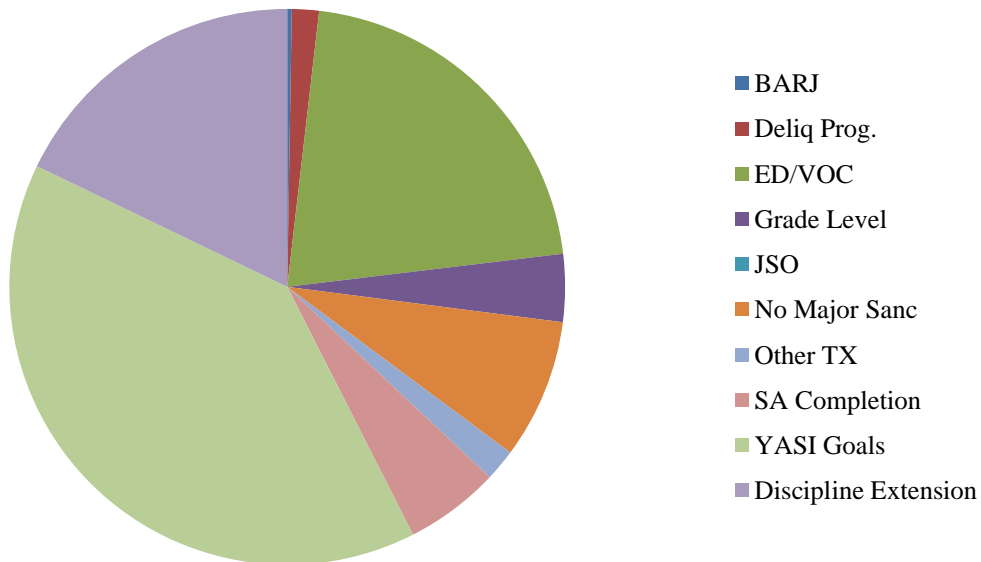


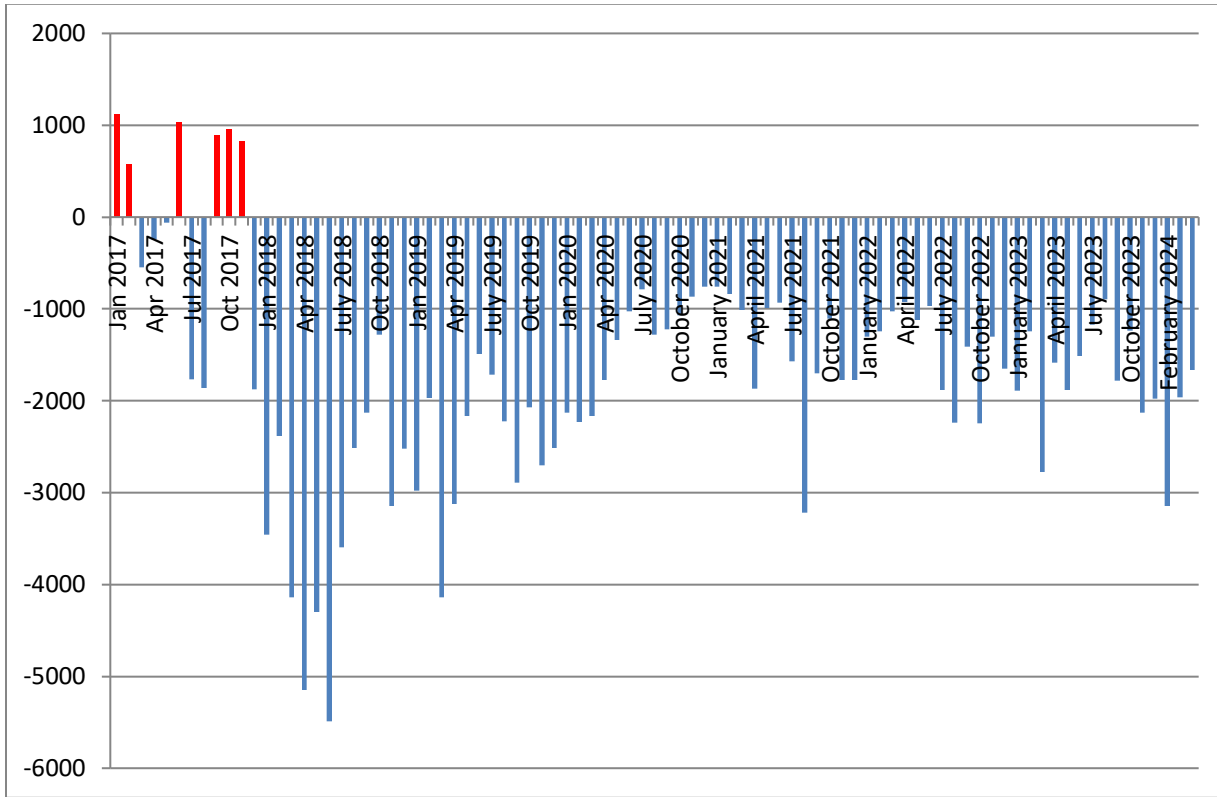
Table 45: Frequency of Discipline Extensions

	7/23	8/23	9/23	10/23	11/23	12/23	1/24	2/24	3/24	4/24
<i>IYC Chicago</i>	16	13	10	26	8	19	33	24	4	14
<i>IYC Harrisburg</i>	22	50	15	45	19	32	29	25	9	22
<i>IYC Pere Marquette</i>	13	16	0	20	19	10	1	6	2	1
<i>IYC St. Charles</i>	7	10	36	21	47	22	7	2	0	17
<i>IYC Warrenville</i>	4	15	5	4	1	1	3	2	6	14
Total	62	104	66	116	94	84	73	59	21	68

Table 46: Average Length of Discipline Extension

	7/23	8/23	9/23	10/23	11/23	12/23	1/24	2/24	3/24	4/24
<i>IYC Chicago</i>	10	14	6	8	12	11	10	9	4	7
<i>IYC Harrisburg</i>	10	10	6	17	7	14	5	7	6	11
<i>IYC Pere Marquette</i>	10	6	0	7	7	6	4	7	10	2
<i>IYC St. Charles</i>	13	7	8	11	10	10	24	4	0	8
<i>IYC Warrenville</i>	16	7	5	7	5	3	12	15	22	8
Average	11	9	7	12	9	11	9	8	10	9

Summed Total Adjustment Days by Month



Section 11: YASI

Table 47: YASI Pre-Screens: April 2024

	Legal Risk	Social Risk	Protective	Overall Risk
<i>High</i>	80	65	4	80
<i>Moderate</i>	19	30	35	19
<i>Low</i>	0	4	60	0
Total	99	99	99	99

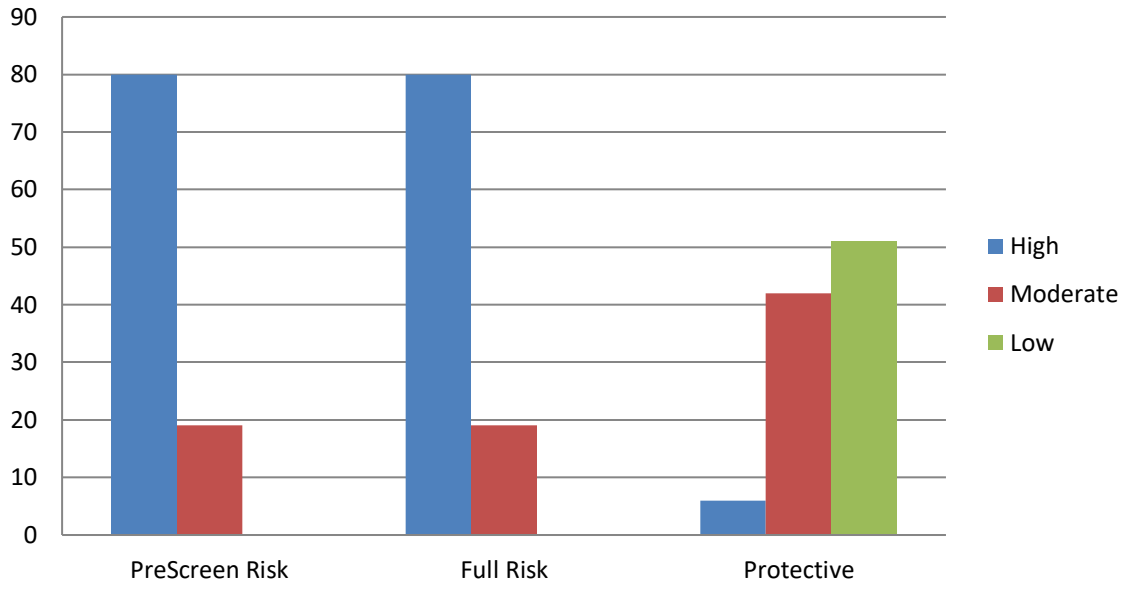
Table 48: YASI Full Assessments: Risk

	Dynamic	Static	Overall
<i>Very High</i>	22	-	-
<i>High</i>	20	98	80
<i>Moderate-High</i>	31	-	-
<i>Moderate</i>	21	1	19
<i>Low-Moderate</i>	3	-	-
<i>Low</i>	2	0	0
<i>None</i>	0	0	0
Total	99	99	99

Table 49: YASI Full Assessments: Protective

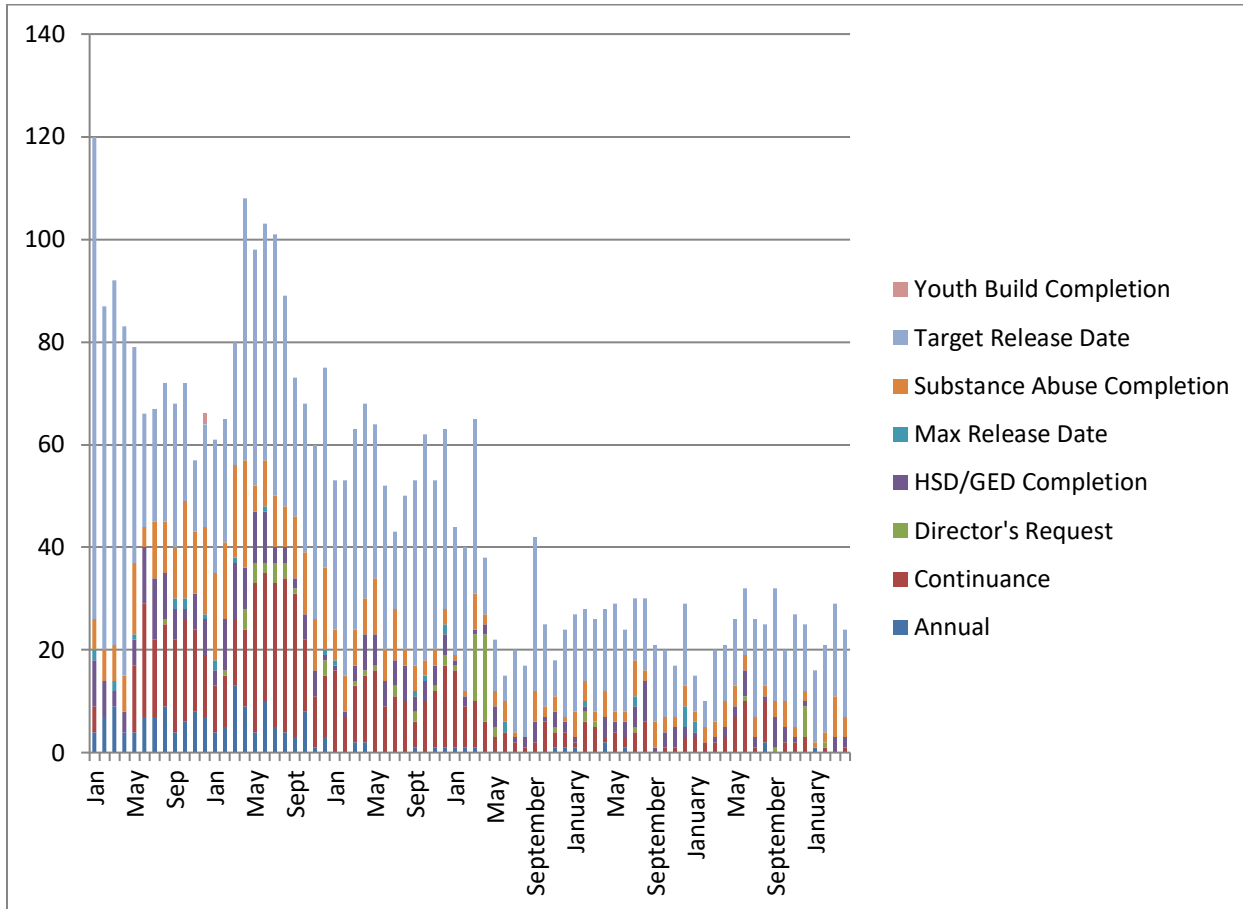
	Dynamic	Static	Overall
<i>Very High</i>	2	-	-
<i>High</i>	2	8	6
<i>Moderate-High</i>	24	-	-
<i>Moderate</i>	38	18	42
<i>Low-Moderate</i>	22	-	-
<i>Low</i>	11	12	51
<i>None</i>	0	61	0
Total	99	99	99

Chart 16: Risk and Protective Levels of Youth



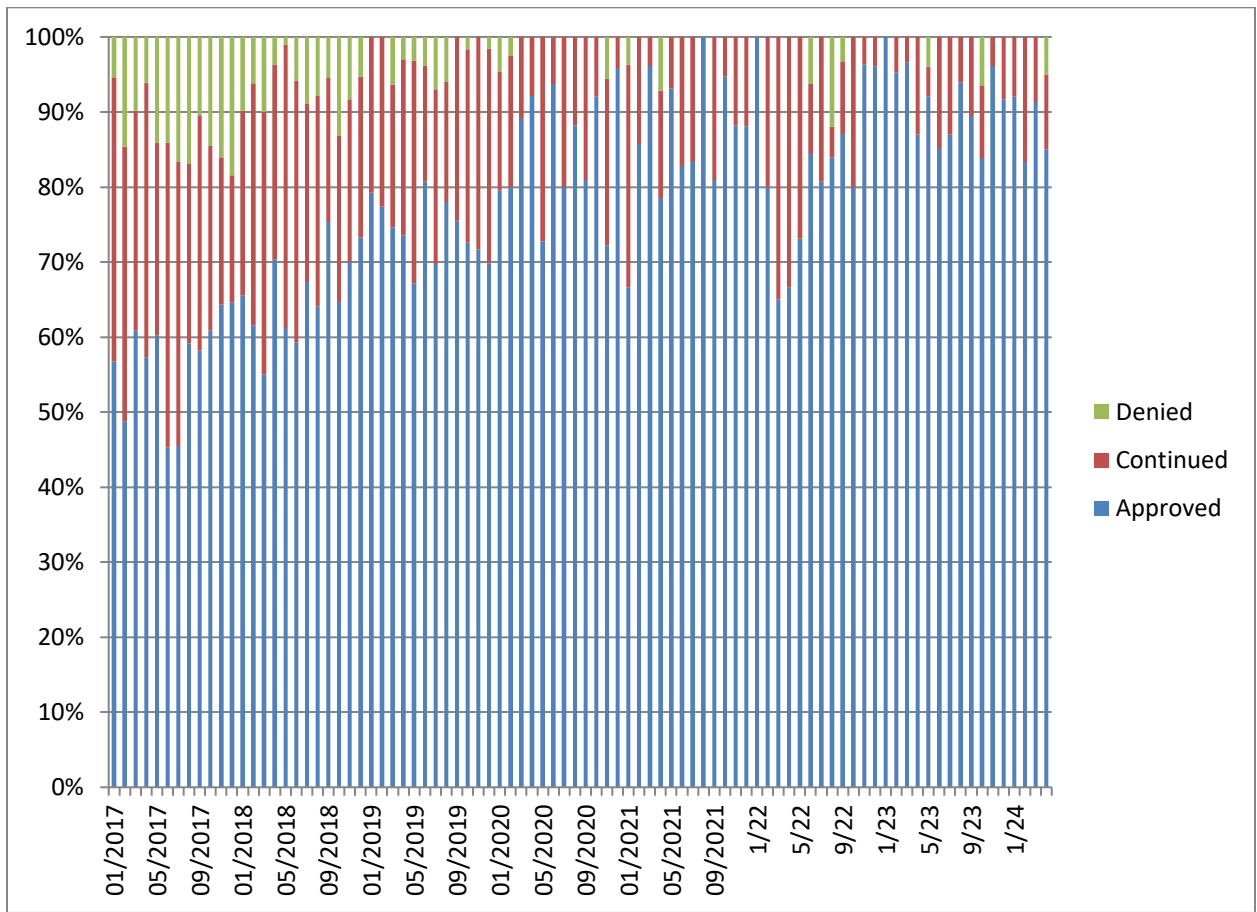
Release Reviews

Reviews by Type per Month



	Annual	Cont.	Director's Request	HSD/GED	Max Release Date	Substance Abuse	Target Release Date	Total
July	3	2	3	3	0	2	11	24
August	0	2	7	1	0	6	18	34
September	1	1	0	2	0	1	16	21
October	0	3	1	2	0	2	23	31
November	1	2	6	0	0	2	15	26
December	0	1	5	0	0	3	15	24
January	0	1	0	1	2	0	21	25
February	0	3	0	0	0	3	12	18
March	0	4	0	2	0	1	16	23
April	1	0	0	0	0	1	18	20

Percent of Release Reviews by Outcome and Month



Demographic Profile for April 30th, 2024

Sex	Institutions		Aftercare	
	Number	Percent	Number	Percent
Male	158	95.2%	278	96.2%
Female	8	4.8%	11	3.8%

Age	Institutions		Aftercare	
	Number	Percent	Number	Percent
Average Age	17.5		18.0	
16 & Under	55	33.1%	84	29.1%
17 to 20	110	66.3%	198	68.5%
20.5 & Over	1	0.6%	6	2.1%

Race/Ethnicity	Institutions		Aftercare	
	Number	Percent	Number	Percent
White	25	15.1%	62	21.5%
Black	120	72.3%	199	68.8%
Hispanic	16	9.6%	19	6.6%
Asian/Pacific Islander	0	0%	0	0%
Multi/Biracial	5	3.0%	9	3.1%

Committing Counties ¹	Institutions		Aftercare	
	Number	Percent	Number	Percent
Cook	45	27.1%	76	26.3%
Collar Counties	10	6.0%	18	6.2%
Metro-East	12	7.2%	11	3.8%
Central	67	40.4%	99	34.3%
Southern	9	5.4%	20	6.9%
Northern	23	13.9%	54	18.7%
Out of State	0	0%	11	3.8%

¹ Committing Counties: Cook = Cook; Collar Counties = DuPage, Kane, Lake, McHenry, Will; Metro East Counties = Madison, St. Clair; Central IL Counties = Adams, Bond, Brown, Calhoun, Cass, Champaign, Christian, Clark, Coles, Crawford, Cumberland, Dewitt, Douglas, Edgar, Effingham, Fayette, Ford, Fulton, Greene, Hancock, Henderson, Iroquois, Jasper, Jersey, Knox, Livingston, Logan, McDonough, McLean, Macon, Macoupin, Marshall, Mason, Menard, Montgomery, Morgan, Moultrie, Peoria, Piatt, Pike, Sangamon, Schuyler, Scott, Shelby, Stark, Tazewell, Vermillion Warren, Woodford; South IL Counties = Alexander, Clay, Clinton, Edwards, Franklin, Gallatin, Hamilton, Hardin, Jackson, Jefferson, Johnson, Lawrence, Marion, Massac, Monroe, Perry, Pope, Pulaski, Randolph, Richland, Saline, Union, Wabash, Washington, Wayne, White, Williamson; North, IL Counties = Boone, Bureau, Carroll, DeKalb, Grundy, Henry, Jo-Daviess, Kankakee, Kendall, LaSalle, Lee, Mercer, Ogle, Putnam, Rock Island, Stephenson, Whiteside, Winnebago; Other = Out of State

Offense Class	Institutions		Aftercare	
	Number	Percent	Number	Percent
Murder	22	13.3%	4	1.4%
Class X Felony	55	33.1%	65	22.5%
Class 1 Felony	33	19.9%	65	22.5%
Class 2 Felony	37	22.3%	105	36.3%
Class 3 Felony	13	7.8%	18	6.2%
Class 4 Felony	6	3.6%	21	7.3%

Offense Class by Race	Black	White	Hispanic	Bi/Multiracial
Murder	18	3	5	0
Class X Felony	89	18	11	1
Class 1 Felony	72	18	4	4
Class 2 Felony	95	31	10	6
Class 3 Felony	16	10	3	2
Class 4 Felony	22	3	1	1
Total	312	83	34	14

This table provides a summary of all youth in DJJ (both facilities and Aftercare) relating to their race and holding offense crime class. The numbers in the table and the raw number of youth in a category.

Prefix	Institutions		Aftercare	
	Number	Percent	Number	Percent
Court Evaluation	3	1.8%	0	0%
Delinquent	71	42.8%	250	86.5%
Extended Jurisdiction	10	6.0%	12	4.2%
Felon	56	33.7%	3	1.0%
First Degree Murderer	10	6.0%	2	0.7%
Habitual Juvenile	2	1.2%	0	0%
Violent Juvenile	14	8.4%	11	3.8%
From Other State	0	0%	11	3.8%

Aftercare Completion – April 2024

Characteristics of Youth at Exiting Aftercare

Youth exiting aftercare are youth that are being discharged from IDJJ custody and youth that are entering an IDJJ facility

Sex	Aftercare Exits	
	Number	Percent
Male	27	96.4%
Female	1	3.6%

Age	Aftercare Exits	
	Number	Percent
Average Age	18.5	
16 & Under	1	3.6%
17 to 20	25	89.3%
20.5 & Over	2	7.1%

Committing Counties ²	Aftercare Exits	
	Number	Percent
Cook	8	28.6%
Collar Counties	2	7.1%
Metro-East	4	14.3%
Central	9	32.1%
Southern	1	3.6%
Northern	4	14.3%
Out of State	0	0%

Race/Ethnicity	Aftercare Exits	
	Number	Percent
White	4	14.3%
Black	21	75.0%
Hispanic	1	3.6%
Asian/Pacific Islander	0	0%
Multi/Biracial	2	7.1%

² Committing Counties: Cook = Cook; Collar Counties = DuPage, Kane, Lake, McHenry, Will; Metro East Counties = Madison, St. Clair; Central IL Counties = Adams, Bond, Brown, Calhoun, Cass, Champaign, Christian, Clark, Coles, Crawford, Cumberland, Dewitt, Douglas, Edgar, Effingham, Fayette, Ford, Fulton, Greene, Hancock, Henderson, Iroquois, Jasper, Jersey, Knox, Livingston, Logan, McDonough, McLean, Macon, Macoupin, Marshall, Mason, Menard, Montgomery, Morgan, Moultrie, Peoria, Piatt, Pike, Sangamon, Schuyler, Scott, Shelby, Stark, Tazewell, Vermillion Warren, Woodford; South IL Counties = Alexander, Clay, Clinton, Edwards, Franklin, Gallatin, Hamilton, Hardin, Jackson, Jefferson, Johnson, Lawrence, Marion, Massac, Monroe, Perry, Pope, Pulaski, Randolph, Richland, Saline, Union, Wabash, Washington, Wayne, White, Williamson; North, IL Counties = Boone, Bureau, Carroll, DeKalb, Grundy, Henry, Jo-Daviess, Kankakee, Kendall, LaSalle, Lee, Mercer, Ogle, Putnam, Rock Island, Stephenson, Whiteside, Winnebago; Other = Out of State

Offense Class	Aftercare Exits	
	Number	Percent
Murder	0	0%
Class X Felony	6	21.4%
Class 1 Felony	13	46.4%
Class 2 Felony	7	25.0%
Class 3 Felony	1	3.6%
Class 4 Felony	1	3.6%

Prefix	Aftercare Exits	
	Number	Percent
Court Evaluation	0	0%
Delinquent	21	75.0%
Extended Jurisdiction	3	10.7%
Felon	1	3.6%
First Degree Murderer	0	0%
Habitual Juvenile	0	0%
Violent Juvenile	3	10.7%
From Other State	0	0%

Discharge Reason	Aftercare Exits	
	Number	Percent
Admitted to Institution	11	39.3%
Aftercare Discharge	12	42.9%
Adult Sentence Discharge	1	3.6%
Transfer to Adult Parole	0	0%
Court Ordered Discharge	2	7.1%
Discharged from Illinois Custody	0	0%
Statutory Discharge	2	7.1%
Death	0	0%
Vacated Commitment Order	0	0%
Expiration of Sentence	0	0%

Youth Outcomes at Discharge from Aftercare – April 2024

These are youth outcomes are for youth discharging Aftercare

