



**Monthly Report:
August 2023**

FY2024

Section 1: Population and Staffing Data

Table 1a: Population by Facility

| | 1/23 | 2/23 | 3/23 | 4/23 | 5/23 | 6/23 | 7/23 | 8/23 |
|-----------------------|------------|------------|------------|------------|------------|------------|------------|------------|
| Chicago | 25 | 24 | 22 | 20 | 26 | 29 | 29 | 36 |
| Harrisburg | 45 | 47 | 48 | 59 | 49 | 59 | 59 | 55 |
| Pere Marquette | 13 | 13 | 12 | 9 | 11 | 10 | 10 | 10 |
| St. Charles | 43 | 47 | 51 | 46 | 50 | 50 | 48 | 53 |
| Warrenville | 26 | 24 | 21 | 18 | 20 | 20 | 21 | 21 |
| IDJJ Total | 152 | 155 | 154 | 152 | 156 | 168 | 167 | 175 |

Table 1b: Average Daily Population by Facility

| | 1/23 | 2/23 | 3/23 | 4/23 | 5/23 | 6/23 | 7/23 | 8/23 |
|-----------------------|--------------|--------------|--------------|--------------|--------------|--------------|--------------|--------------|
| Chicago | 25.4 | 25.6 | 24.5 | 21.8 | 23.9 | 25.7 | 28.4 | 33.8 |
| Harrisburg | 46.1 | 46.0 | 49.3 | 54.8 | 50.5 | 54.7 | 58.5 | 61.3 |
| Pere Marquette | 12.8 | 13.3 | 11.6 | 11.5 | 10.6 | 11.8 | 10.2 | 9.8 |
| St. Charles | 39.2 | 44.3 | 47.7 | 46.7 | 47.1 | 47.9 | 53.1 | 53.2 |
| Warrenville | 24.4 | 23.6 | 22.1 | 19.3 | 19.2 | 18.8 | 18.7 | 22.1 |
| IDJJ Total | 147.8 | 152.8 | 155.1 | 154.1 | 151.4 | 159.0 | 168.8 | 180.3 |

Table 2: Security Staff Headcount by Facility

| | 1/23 | 2/23 | 3/23 | 4/23 | 5/23 | 6/23 | 7/23 | 8/23 |
|-----------------------|------------|------------|------------|------------|------------|------------|------------|------|
| Chicago | 64 | 65 | 65 | 62 | 61 | 58 | 57 | |
| Harrisburg | 97 | 98 | 95 | 97 | 98 | 97 | 95 | |
| Pere Marquette | 38 | 41 | 41 | 40 | 42 | 40 | 40 | |
| St. Charles | 81 | 84 | 83 | 79 | 77 | 75 | 75 | |
| Warrenville | 53 | 53 | 52 | 52 | 52 | 53 | 48 | |
| IDJJ Total | 333 | 341 | 336 | 330 | 330 | 323 | 315 | |

Section 2: Mental Health Data

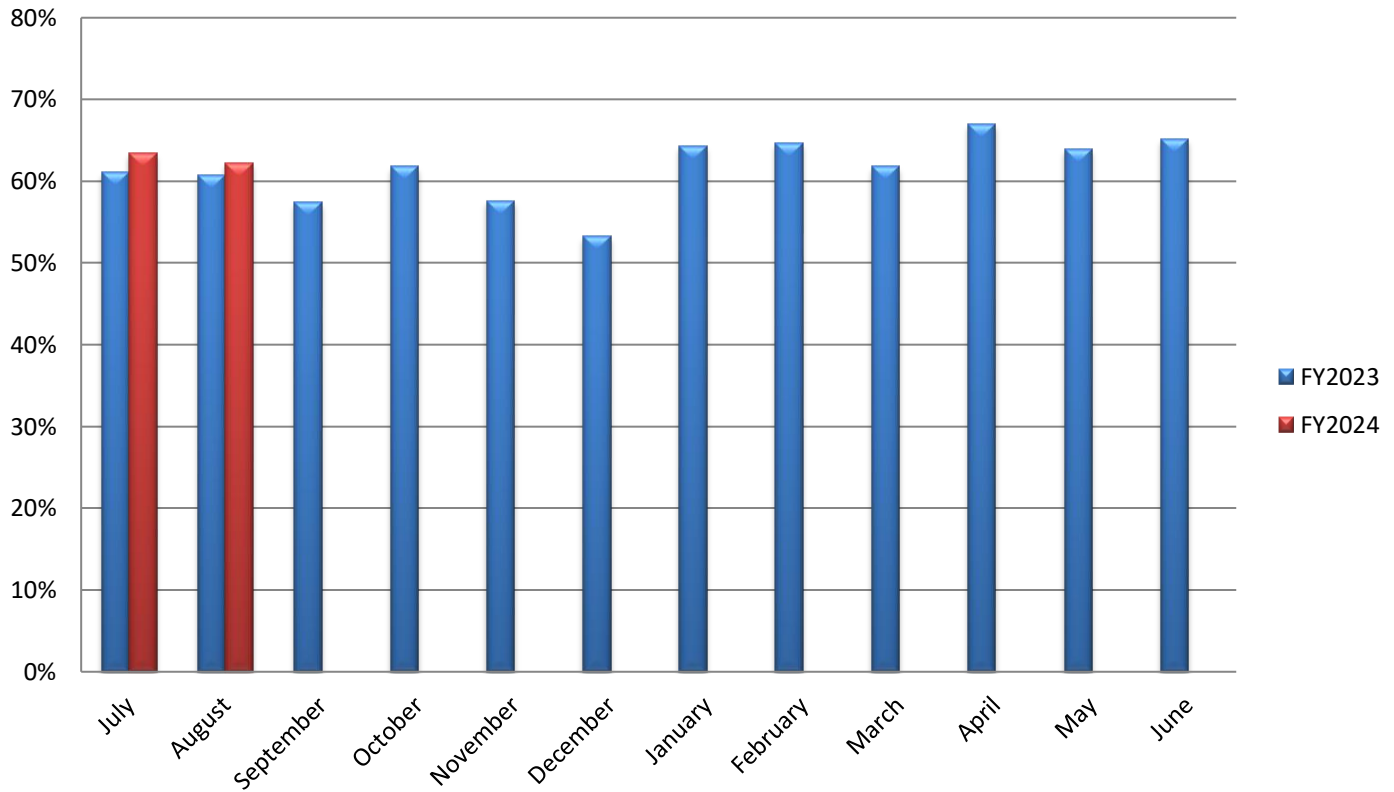
Table 5: Percent of Youth Psychotropic Medication

| | 1/23 | 2/23 | 3/23 | 4/23 | 5/23 | 6/23 | 7/23 | 8/23 |
|-----------------------|--------------|--------------|--------------|--------------|--------------|--------------|--------------|--------------|
| Chicago | 68.6% | 58.6% | 59.4% | 63.0% | 51.9% | 51.5% | 51.4% | 66.7% |
| Harrisburg | 71.4% | 77.6% | 64.0% | 75.9% | 67.4% | 74.1% | 72.0% | 65.1% |
| Pere Marquette | 53.3% | 60.0% | 69.2% | 60.0% | 60.0% | 60.0% | 75% | 62.5% |
| St. Charles | 61.8% | 59.1% | 55.7% | 51.4% | 56.4% | 67.9% | 53.8% | 52.7% |
| Warrenville | 56.3% | 61.1% | 71.4% | 88.5% | 91.7% | 48.1% | 75% | 71.1% |
| IDJJ Average | 64.3% | 64.7% | 61.8% | 67.0% | 63.9% | 65.2% | 63.4% | 62.2% |

Table 7: Distribution of Mental Health Levels

| | Mental Health Level 0 | Mental Health Level 1 | Mental Health Level 2 | Mental Health Level 3 | Mental Health Level 3.5 | Mental Health Level 4 |
|---------------------|-----------------------|-----------------------|-----------------------|-----------------------|-------------------------|-----------------------|
| January | 0.0% | 31.8% | 64.7% | 3.5% | 0.0% | 0.0% |
| February | 0.0% | 35.4% | 61.4% | 3.2% | 0.0% | 0.0% |
| March | 0.0% | 28.6% | 62.2% | 8.6% | 0.0% | 0.5% |
| April | 0.0% | 30.1% | 63.2% | 6.7% | 0.0% | 0.0% |
| May | 0.6% | 31.1% | 64.4% | 3.9% | 0.0% | 0.0% |
| June | 0.5% | 24.2% | 71.7% | 3.0% | 0.0% | 0.5% |
| July | 0.0% | 30.6% | 66.3% | 2.6% | 0.0% | 0.5% |
| August | 0.0% | 34.9% | 60.5% | 4.7% | 0.0% | 0.0% |
| IDJJ Average | 0.1% | 30.8% | 64.3% | 4.5% | 0.0% | 0.2% |

Chart 3: Percent of Youth on Psychotropic Medication



Section 3: Substance Abuse Treatment Data

Table 9: Number of Treatment Participants

| | 1/23 | 2/23 | 3/23 | 4/23 | 5/23 | 6/23 | 7/23 | 8/23 |
|-----------------------|-----------|-----------|-----------|-----------|-----------|-----------|-----------|-----------|
| Chicago | 11 | 7 | 9 | 9 | 7 | 10 | 12 | 11 |
| Harrisburg | 19 | 18 | 23 | 23 | 25 | 22 | 13 | 19 |
| Pere Marquette | 9 | 8 | 3 | 2 | 1 | 0 | 1 | 4 |
| St. Charles | 5 | 4 | 8 | 4 | 6 | 5 | 3 | 4 |
| Warrenville | 2 | 3 | 3 | 5 | 6 | 5 | 4 | 5 |
| IDJJ Total | 46 | 40 | 46 | 43 | 45 | 42 | 33 | 43 |

Table 10: Average Length of Stay for Completers

| | 1/23 | 2/23 | 3/23 | 4/23 | 5/23 | 6/23 | 7/23 | 8/23 |
|-----------------------|-----------|-----------|-----------|-----------|-----------|-----------|-----------|-----------|
| Chicago | 92 | - | 101 | 92 | - | 95 | 102 | 91 |
| Harrisburg | 140 | 98 | 45 | 71 | - | 92 | 85 | 60 |
| Pere Marquette | 60 | - | 60 | - | 106 | - | - | - |
| St. Charles | - | - | 90 | - | - | - | - | - |
| Warrenville | - | - | - | - | 88 | - | 90 | - |
| IDJJ Average | 96 | 98 | 85 | 79 | 97 | 94 | 90 | 75 |

Table 11: Percent of Discharges by Reason

| | 1/23 | 2/23 | 3/23 | 4/23 | 5/23 | 6/23 | 7/23 | 8/23 |
|------------------------------|-------|------|-------|-------|------|-------|-------|-------|
| Successful Completion | 54.5% | 25% | 75% | 66.7% | 25% | 18.2% | 66.7% | 33.3% |
| Behavioral Discharge | 18.2% | 25% | 0% | 0% | 0% | 9.1% | 0% | 0% |
| Youth Released | 27.3% | 50% | 18.8% | 25% | 75% | 54.5% | 22.2% | 55.6% |
| Other Discharge | 0% | 0% | 6.3% | 8.3% | 0% | 18.2% | 11.1% | 11.1% |

Table 12: Primary Substance Abused

| | 1/23 | 2/23 | 3/23 | 4/23 | 5/23 | 6/23 | 7/23 | 8/23 |
|---------------------|-------|-------|-------|-------|-------|-------|-------|-------|
| Marijuana | 69.6% | 71.8% | 51.4% | 56.8% | 60.6% | 52.4% | 63.3% | 67.4% |
| Alcohol | 4.3% | 5.1% | 8.6% | 5.4% | 6.1% | 14.3% | 13.3% | 2.3% |
| Opioids | 8.7% | 7.7% | 22.9% | 16.2% | 9.1% | 14.3% | 13.3% | 9.3% |
| Other Drugs | 17.4% | 15.4% | 17.1% | 21.6% | 24.2% | 19.0% | 10.0% | 20.9% |
| No Diagnosis | 0% | 0% | 0% | 0% | 0% | 0% | 0% | 0% |

Chart 5: Number of Treatment Participants by Facility

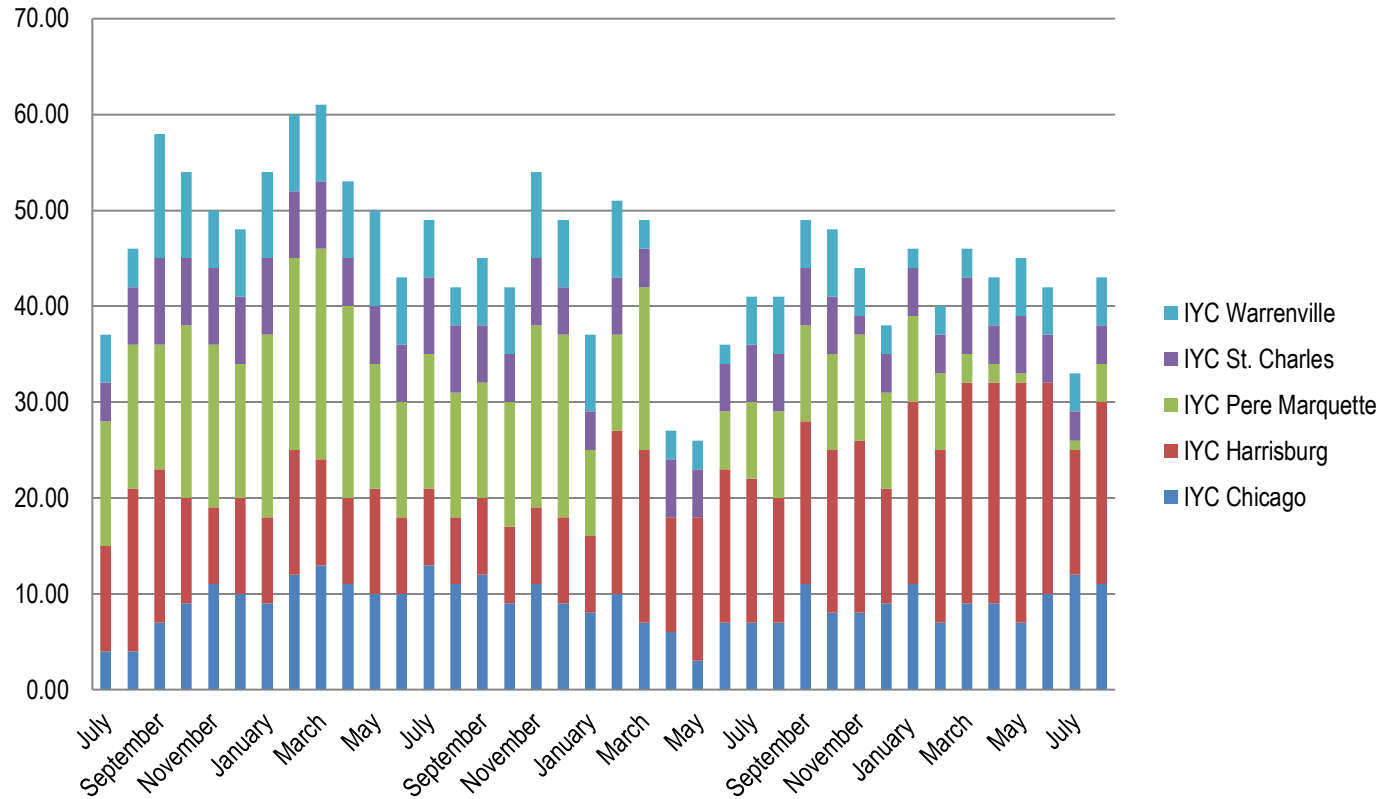
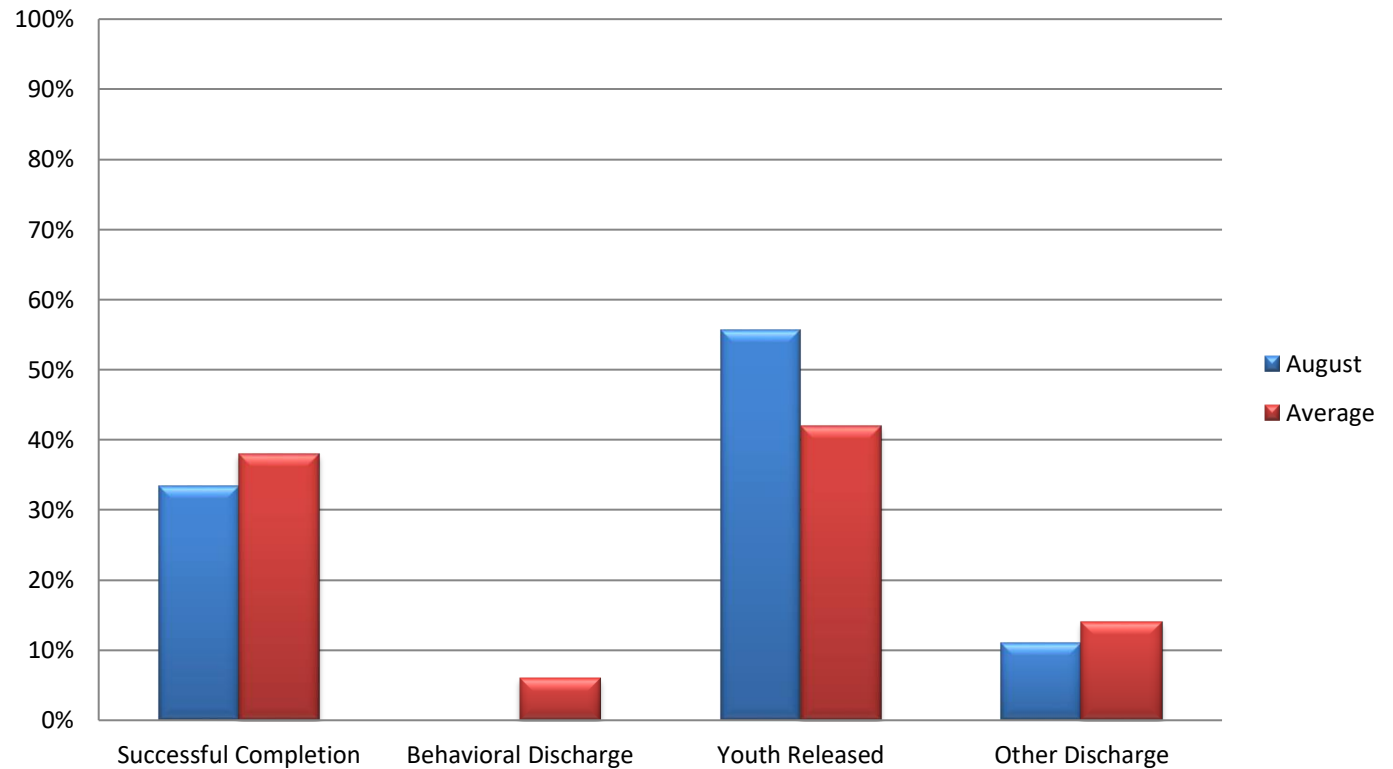


Chart 6: Discharges by Reason



Section 4: Education Data

Table 13: Students Enrolled in School

| | 1/23 | 2/23 | 3/23 | 4/23 | 5/23 | 6/23 | 7/23 | 8/23 |
|-----------------------|------------|------------|------------|------------|------------|------------|------------|------------|
| Chicago | 20 | 15 | 9 | 9 | 13 | 13 | 16 | 21 |
| Harrisburg | 34 | 46 | 45 | 61 | 62 | 45 | 60 | 70 |
| Pere Marquette | 7 | 8 | 6 | 6 | 7 | 9 | 7 | 5 |
| St. Charles | 21 | 27 | 29 | 21 | 26 | 21 | 24 | 25 |
| Warrenville | 20 | 20 | 19 | 19 | 18 | 15 | 16 | 18 |
| IDJJ Total | 102 | 116 | 108 | 116 | 126 | 103 | 123 | 139 |

Table 14: Teachers Employed

| | 1/23 | 2/23 | 3/23 | 4/23 | 5/23 | 6/23 | 7/23 | 8/23 |
|-----------------------|-----------|-----------|-----------|-----------|-----------|-----------|-----------|-----------|
| Chicago | 7 | 7 | 7 | 7 | 7 | 7 | 7 | 7 |
| Harrisburg | 10 | 10 | 11 | 11 | 11 | 11 | 11 | 11 |
| Pere Marquette | 5 | 5 | 6 | 6 | 6 | 6 | 6 | 6 |
| St. Charles | 5 | 5 | 5 | 5 | 5 | 5 | 5 | 5 |
| Warrenville | 3 | 4 | 4 | 4 | 4 | 4 | 4 | 3 |
| IDJJ Total | 30 | 31 | 33 | 33 | 33 | 33 | 33 | 32 |

Table 15: General Education Student to Teacher Ratio

| | 1/23 | 2/23 | 3/23 | 4/23 | 5/23 | 6/23 | 7/23 | 8/23 |
|-----------------------|------------|------------|------------|------------|------------|------------|------------|------------|
| Chicago | 2.4 | 1.4 | 0.7 | 0.7 | 0.8 | 0.8 | 1.2 | 2.0 |
| Harrisburg | 1.6 | 3.1 | 1.7 | 3.4 | 3.3 | 4.2 | 3.3 | 2.0 |
| Pere Marquette | 1.3 | 1.3 | 1.0 | 1.0 | 1.0 | 1.0 | 0.8 | 0.7 |
| St. Charles | 4.0 | 4.0 | 5.0 | 3.0 | 11.0 | 3.8 | 4.8 | 3.5 |
| Warrenville | 3.5 | 4.0 | 4.0 | 4.5 | 5.5 | 2.0 | 5.0 | 4.0 |
| IDJJ Average | 2.3 | 2.7 | 1.9 | 2.4 | 8.0 | 2.6 | 2.7 | 2.3 |

Table 16: Special Education Student to Teacher Ratio

| | 1/23 | 2/23 | 3/23 | 4/23 | 5/23 | 6/23 | 7/23 | 8/23 |
|-----------------------|------------|------------|------------|------------|------------|------------|------------|------------|
| Chicago | 8.0 | 8.0 | 5.0 | 5.0 | 8.0 | 8.0 | 9.0 | 8.0 |
| Harrisburg | 11.5 | 10.5 | 15.0 | 15.0 | 16.0 | 15.5 | 15.0 | 10.3 |
| Pere Marquette | 2.0 | 2.0 | 1.0 | 1.0 | 1.0 | 2.0 | 2.5 | 1.5 |
| St. Charles | 9.0 | 15.0 | 15.0 | 12.0 | 11.0 | 6.0 | 2.5 | 9.0 |
| Warrenville | 14.0 | 6.0 | 5.5 | 5.0 | 5.5 | 5.5 | 5.5 | 6.0 |
| IDJJ Average | 8.3 | 7.5 | 7.9 | 7.4 | 8.0 | 7.5 | 6.7 | 7.1 |

Table 17: Overall Diplomas Awarded

| | 2/23 | 3/23 | 4/23 | 5/23 | 6/23 | 7/23 | 8/23 | Total |
|-----------------------|----------|----------|----------|----------|-----------|----------|----------|-----------|
| <i>Chicago</i> | 0 | 3 | 1 | 0 | 0 | 0 | 0 | 4 |
| <i>Harrisburg</i> | 2 | 2 | 3 | 0 | 1 | 1 | 1 | 10 |
| <i>Pere Marquette</i> | 0 | 0 | 0 | 1 | 0 | 0 | 1 | 2 |
| <i>St. Charles</i> | 1 | 1 | 2 | 4 | 4 | 1 | 2 | 15 |
| <i>Warrenville</i> | 0 | 0 | 0 | 0 | 6 | 2 | 1 | 9 |
| IDJJ Total | 3 | 6 | 6 | 5 | 11 | 4 | 5 | 40 |

Table 18: Percent of Special Education Students

| | 1/23 | 2/23 | 3/23 | 4/23 | 5/23 | 6/23 | 7/23 | 8/23 |
|-----------------------|--------------|--------------|--------------|--------------|--------------|--------------|--------------|--------------|
| <i>Chicago</i> | 40% | 53.3% | 55.5% | 55.5% | 61.5% | 61.5% | 56.3% | 33.3% |
| <i>Harrisburg</i> | 67.6% | 45.7% | 66.7% | 49.2% | 51.6% | 68.9% | 50.0% | 50% |
| <i>Pere Marquette</i> | 57.1% | 50% | 33.3% | 33.3% | 28.6% | 44.4% | 71.4% | 80% |
| <i>St. Charles</i> | 42.9% | 55.6% | 51.7% | 57.1% | 42.3% | 28.6% | 20.8% | 40% |
| <i>Warrenville</i> | 70% | 60% | 57.9% | 52.6% | 61.1% | 73.3% | 68.8% | 61.1% |
| IDJJ Total | 56.9% | 51.7% | 58.3% | 50.9% | 50.8% | 58.3% | 48.8% | 48.2% |

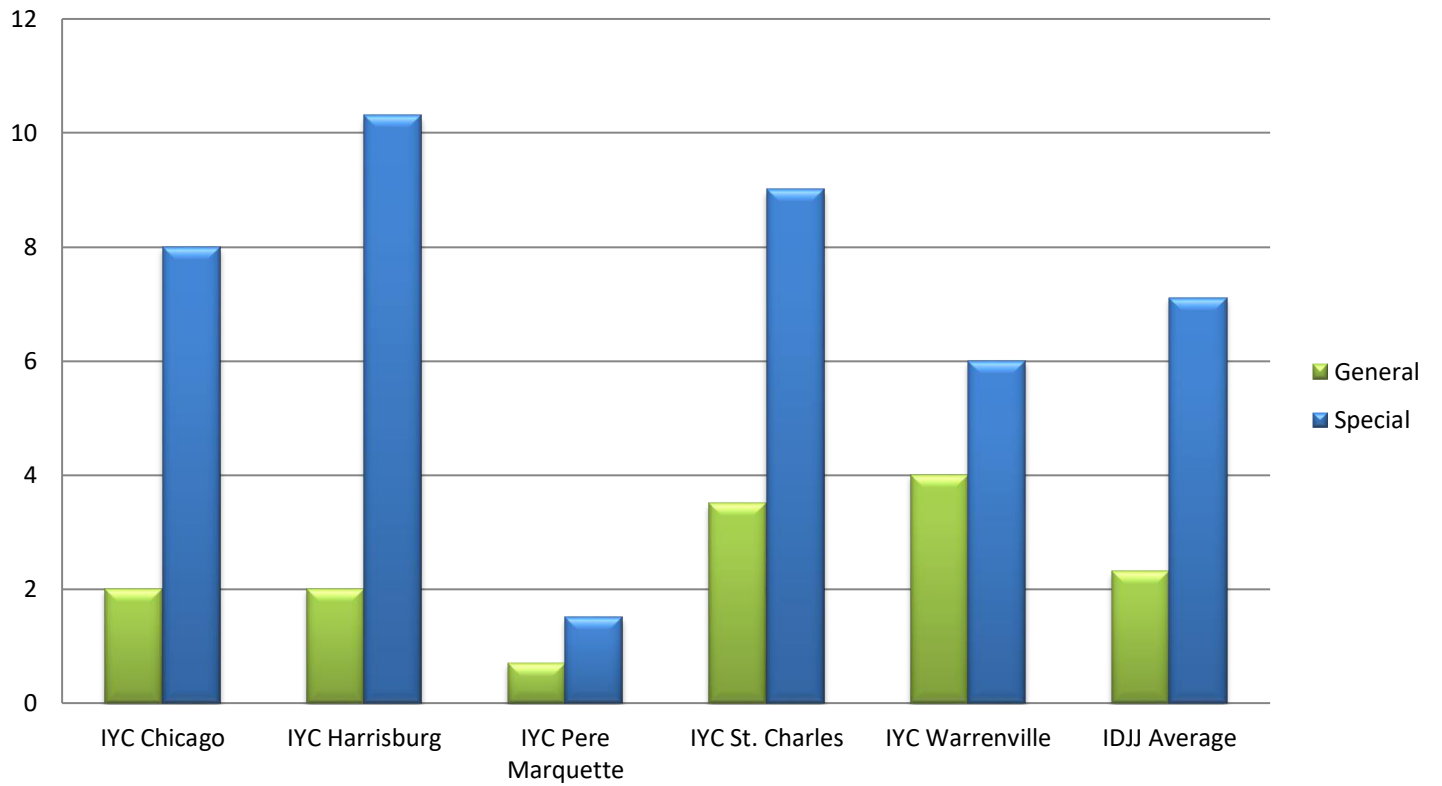
Table 20: Youth in Continuing Education

| | Post-Secondary | Collegiate |
|---------------------------|----------------|------------|
| <i>IYC Chicago</i> | 0 | 0 |
| <i>IYC Harrisburg</i> | 0 | 8 |
| <i>IYC Pere Marquette</i> | 0 | 0 |
| <i>IYC St. Charles</i> | 0 | 4 |
| <i>IYC Warrenville</i> | 0 | 0 |
| IDJJ Total | 0 | 12 |

Table 21: Number and Percent of Cancelled Whole School Days

| | Number | Percent |
|---------------------------|----------|-----------|
| <i>IYC Chicago</i> | 0 | 0% |
| <i>IYC Harrisburg</i> | 0 | 0% |
| <i>IYC Pere Marquette</i> | 0 | 0% |
| <i>IYC St. Charles</i> | 1 | 5% |
| <i>IYC Warrenville</i> | 7 | 35% |
| IDJJ Total | 8 | 8% |

Chart 7: Student to Teacher Ratio by Facility



Section 5: Reportable Incident Data

Table 21a: Number of Reportable Incidents

| | 1/23 | 2/23 | 3/23 | 4/23 | 5/23 | 6/23 | 7/23 | 8/23 |
|-----------------------|-----------|-----------|-----------|-----------|-----------|-----------|-----------|-----------|
| Chicago | 4 | 3 | 5 | 4 | 4 | 5 | 6 | 11 |
| Harrisburg | 42 | 37 | 29 | 47 | 34 | 50 | 37 | 39 |
| Pere Marquette | 1 | 3 | 3 | 7 | 3 | 6 | 6 | 10 |
| St. Charles | 18 | 8 | 24 | 12 | 6 | 20 | 11 | 23 |
| Warrenville | 28 | 13 | 10 | 10 | 13 | 7 | 7 | 12 |
| IDJJ Total | 93 | 64 | 61 | 80 | 60 | 88 | 67 | 95 |

Table 21b: Rate of Reportable Incidents per 100 Youth

| | 1/23 | 2/23 | 3/23 | 4/23 | 5/23 | 6/23 | 7/23 | 8/23 | Avg. |
|-----------------------|-------------|-------------|-------------|-------------|-------------|-------------|-------------|-------------|-------------|
| Chicago | 15.7 | 11.7 | 20.4 | 18.3 | 16.7 | 19.5 | 21.1 | 32.5 | 19.5 |
| Harrisburg | 91.1 | 80.4 | 58.8 | 85.8 | 67.3 | 91.4 | 63.2 | 63.6 | 75.2 |
| Pere Marquette | 7.8 | 22.6 | 25.9 | 60.9 | 28.3 | 50.8 | 58.8 | 102.0 | 44.6 |
| St. Charles | 45.9 | 18.1 | 50.3 | 25.7 | 12.7 | 41.8 | 20.7 | 43.2 | 32.3 |
| Warrenville | 114.8 | 55.1 | 45.2 | 51.8 | 67.7 | 37.2 | 37.4 | 54.3 | 57.9 |
| IDJJ Average | 62.9 | 41.9 | 39.3 | 51.9 | 39.6 | 55.3 | 39.7 | 52.7 | 47.9 |

Table 22a: Number of Youth on Youth Assaults

| | 1/23 | 2/23 | 3/23 | 4/23 | 5/23 | 6/23 | 7/23 | 8/23 |
|-----------------------|-----------|-----------|-----------|-----------|-----------|-----------|-----------|-----------|
| Chicago | 1 | 0 | 0 | 1 | 1 | 0 | 2 | 4 |
| Harrisburg | 19 | 7 | 10 | 18 | 13 | 17 | 15 | 20 |
| Pere Marquette | 0 | 1 | 1 | 1 | 0 | 2 | 3 | 5 |
| St. Charles | 4 | 0 | 10 | 2 | 1 | 4 | 4 | 9 |
| Warrenville | 5 | 4 | 5 | 4 | 5 | 4 | 1 | 0 |
| IDJJ Total | 29 | 12 | 26 | 26 | 20 | 27 | 25 | 38 |

Table 22b: Rate of Youth on Youth Assaults per 100 Youth

| | 1/23 | 2/23 | 3/23 | 4/23 | 5/23 | 6/23 | 7/23 | 8/23 | Avg. |
|-----------------------|-------------|------------|-------------|-------------|-------------|-------------|-------------|-------------|-------------|
| Chicago | 3.9 | 0 | 0 | 4.6 | 4.2 | 0.0 | 7.0 | 11.8 | 3.9 |
| Harrisburg | 41.2 | 15.2 | 20.3 | 32.8 | 25.7 | 31.1 | 25.6 | 32.6 | 28.1 |
| Pere Marquette | 0 | 7.5 | 8.6 | 8.7 | 0.0 | 16.9 | 29.4 | 51.0 | 15.3 |
| St. Charles | 10.2 | 0 | 21.0 | 4.3 | 2.1 | 8.4 | 7.5 | 16.9 | 8.8 |
| Warrenville | 20.5 | 16.9 | 22.6 | 20.7 | 26.0 | 21.3 | 5.3 | 0 | 16.7 |
| IDJJ Average | 19.6 | 7.9 | 16.8 | 16.9 | 13.2 | 17.0 | 14.8 | 21.1 | 15.9 |

Table 23a: Number of Youth Fights

| | 1/23 | 2/23 | 3/23 | 4/23 | 5/23 | 6/23 | 7/23 | 8/23 |
|-----------------------|-----------|-----------|-----------|-----------|-----------|-----------|-----------|-----------|
| Chicago | 3 | 3 | 1 | 3 | 1 | 0 | 2 | 3 |
| Harrisburg | 21 | 25 | 15 | 24 | 20 | 27 | 14 | 13 |
| Pere Marquette | 1 | 1 | 1 | 3 | 1 | 2 | 2 | 2 |
| St. Charles | 9 | 7 | 10 | 7 | 4 | 13 | 7 | 11 |
| Warrenville | 13 | 8 | 3 | 1 | 4 | 2 | 4 | 8 |
| IDJJ Total | 47 | 44 | 30 | 38 | 30 | 44 | 29 | 37 |

Table 23b: Rate of Youth Fights per 100 Youth

| | 1/23 | 2/23 | 3/23 | 4/23 | 5/23 | 6/23 | 7/23 | 8/23 | Avg. |
|-----------------------|-------------|-------------|-------------|-------------|-------------|-------------|-------------|-------------|-------------|
| Chicago | 11.8 | 11.7 | 4.1 | 13.8 | 4.2 | 0.0 | 7.0 | 8.9 | 7.7 |
| Harrisburg | 45.6 | 54.3 | 30.4 | 43.8 | 39.6 | 49.4 | 23.9 | 21.2 | 38.5 |
| Pere Marquette | 7.8 | 7.5 | 8.6 | 26.1 | 9.4 | 16.9 | 19.6 | 20.4 | 14.5 |
| St. Charles | 23.0 | 15.8 | 21.0 | 15.0 | 8.5 | 27.1 | 13.2 | 20.7 | 18.0 |
| Warrenville | 53.3 | 33.9 | 13.6 | 5.2 | 20.8 | 10.6 | 21.4 | 36.2 | 24.4 |
| IDJJ Average | 31.8 | 28.8 | 19.3 | 24.7 | 19.8 | 27.7 | 17.2 | 20.5 | 23.7 |

Table 24a: Number of Youth on Staff Assaults

| | 1/23 | 2/23 | 3/23 | 4/23 | 5/23 | 6/23 | 7/23 | 8/23 |
|-----------------------|-----------|----------|-----------|-----------|-----------|-----------|-----------|-----------|
| Chicago | 0 | 0 | 4 | 0 | 2 | 5 | 2 | 4 |
| Harrisburg | 2 | 5 | 4 | 5 | 1 | 6 | 8 | 6 |
| Pere Marquette | 0 | 1 | 1 | 3 | 2 | 2 | 1 | 3 |
| St. Charles | 5 | 1 | 4 | 3 | 1 | 3 | 0 | 3 |
| Warrenville | 10 | 1 | 2 | 5 | 4 | 1 | 2 | 4 |
| IDJJ Total | 17 | 8 | 15 | 16 | 10 | 17 | 13 | 20 |

Table 24b: Rate of Youth on Staff Assaults per 100 Youth

| | 1/23 | 2/23 | 3/23 | 4/23 | 5/23 | 6/23 | 7/23 | 8/23 | Avg. |
|-----------------------|-------------|------------|------------|-------------|------------|-------------|------------|-------------|-------------|
| Chicago | 0 | 0 | 16.2 | 0 | 8.4 | 19.5 | 7.0 | 11.8 | 7.9 |
| Harrisburg | 4.3 | 10.9 | 8.1 | 9.1 | 2.0 | 11.0 | 13.7 | 9.8 | 8.6 |
| Pere Marquette | 0 | 7.5 | 8.6 | 26.1 | 18.9 | 16.9 | 9.8 | 30.6 | 14.8 |
| St. Charles | 12.8 | 2.3 | 8.4 | 6.4 | 2.1 | 6.3 | 0 | 5.6 | 5.5 |
| Warrenville | 41.0 | 4.2 | 9.0 | 25.9 | 20.8 | 5.3 | 10.7 | 18.1 | 16.9 |
| IDJJ Average | 11.5 | 5.2 | 9.7 | 10.4 | 6.6 | 10.7 | 7.7 | 11.1 | 9.1 |

Chart 9: Rate of Reportable Incidents Per 100 Youth

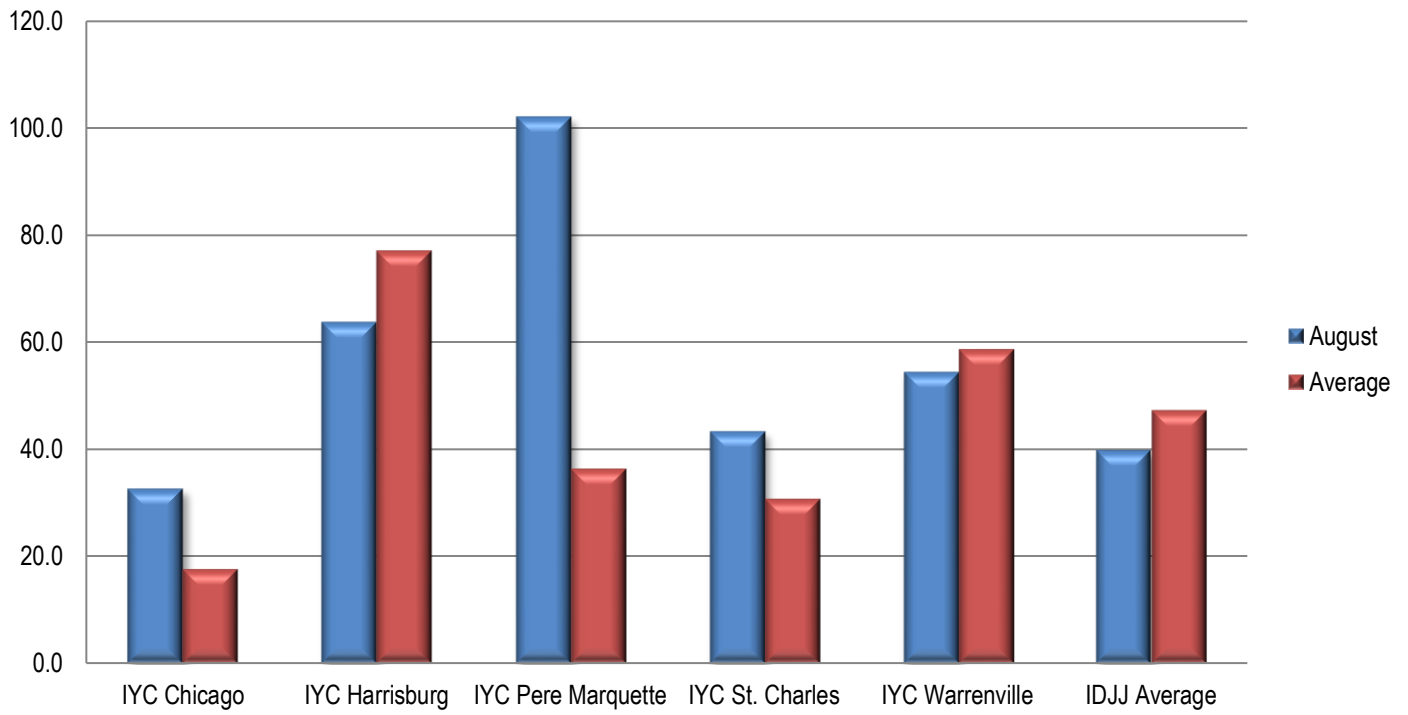
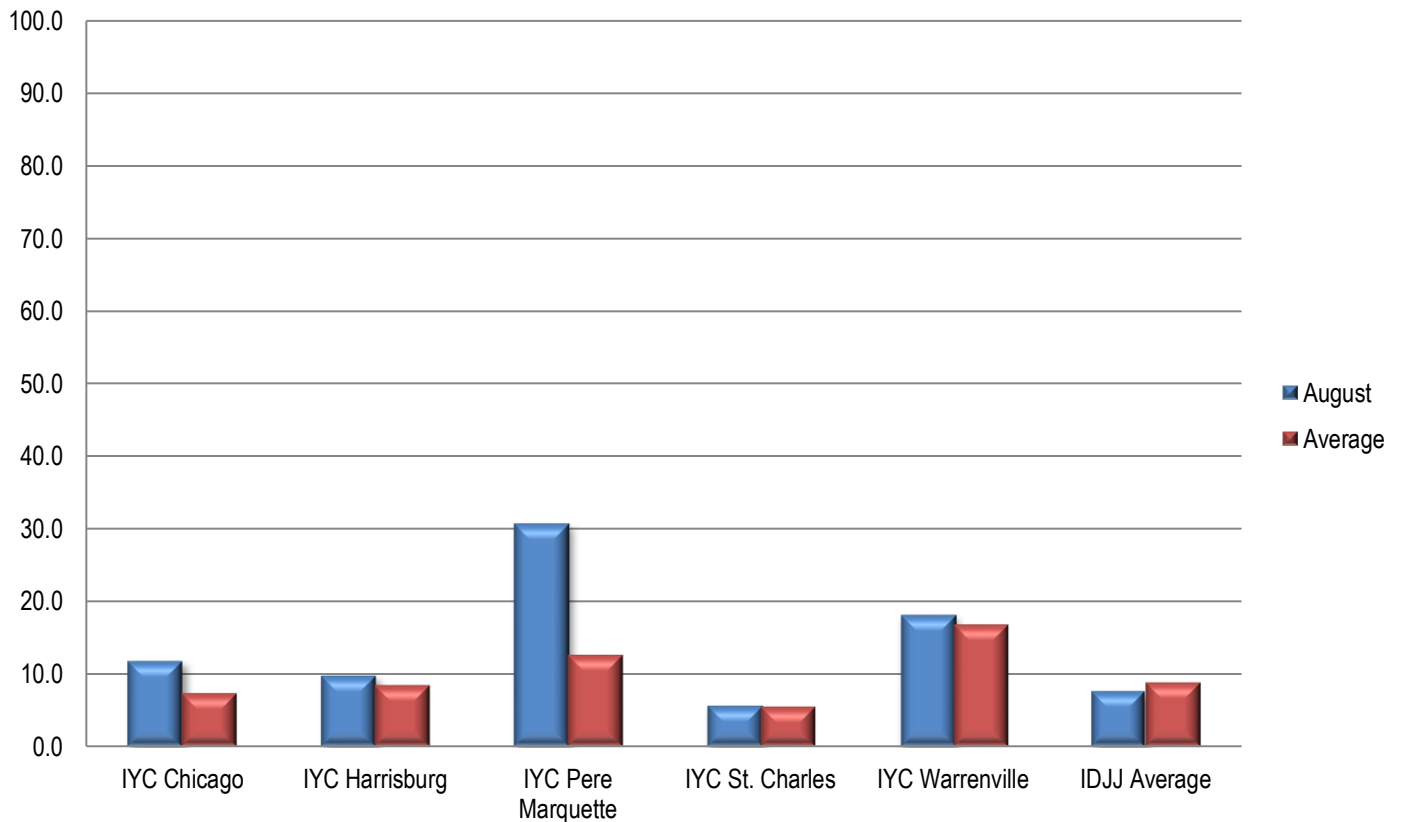


Chart 10: Rate of Youth on Staff Assault Per 100 Youth



Section 6: Indicator Data

Table 25: Uses of Chemical Restraints

| | 1/23 | 2/23 | 3/23 | 4/23 | 5/23 | 6/23 | 7/23 | 8/23 |
|-----------------------|----------|----------|----------|----------|----------|----------|----------|----------|
| Chicago | 0 | 0 | 0 | 0 | 0 | 1 | 1 | 0 |
| Harrisburg | 0 | 0 | 1 | 2 | 1 | 2 | 2 | 1 |
| Pere Marquette | 0 | 0 | 0 | 0 | 0 | 0 | 0 | 0 |
| St. Charles | 0 | 0 | 1 | 1 | 0 | 1 | 0 | 3 |
| Warrenville | 3 | 0 | 0 | 0 | 0 | 1 | 0 | 0 |
| IDJJ Total | 3 | 0 | 2 | 3 | 1 | 5 | 3 | 4 |

Table 26: Uses of Mechanical Restraints

| | 1/23 | 2/23 | 3/23 | 4/23 | 5/23 | 6/23 | 7/23 | 8/23 |
|-----------------------|-----------|-----------|-----------|-----------|-----------|-----------|-----------|-----------|
| Chicago | 0 | 0 | 0 | 3 | 3 | 5 | 1 | 6 |
| Harrisburg | 9 | 16 | 13 | 24 | 11 | 13 | 21 | 13 |
| Pere Marquette | 0 | 0 | 0 | 1 | 2 | 3 | 2 | 3 |
| St. Charles | 1 | 0 | 3 | 5 | 0 | 2 | 1 | 2 |
| Warrenville | 9 | 5 | 7 | 6 | 7 | 5 | 11 | 13 |
| IDJJ Total | 19 | 21 | 23 | 39 | 23 | 28 | 36 | 37 |

Uses of chemical and mechanical restraints have varied throughout the year, although the use in the current year is much lower than years past. Numbers and rates of uses of restraints should be related to population size and number and types of incidents. More important than how frequent they are is whether they are used according to policy and for appropriate reasons.

Section 7: Confinement Information

Table 28a: Use of Behavioral Holds

| | 1/23 | 2/23 | 3/23 | 4/23 | 5/23 | 6/23 | 7/23 | 8/23 |
|-----------------------|------------|------------|------------|------------|------------|------------|------------|------------|
| Chicago | 7 | 8 | 4 | 3 | 8 | 9 | 1 | 9 |
| Harrisburg | 57 | 66 | 37 | 65 | 51 | 64 | 51 | 50 |
| Pere Marquette | 0 | 0 | 2 | 6 | 4 | 14 | 6 | 3 |
| St. Charles | 40 | 24 | 41 | 39 | 12 | 31 | 22 | 49 |
| Warrenville | 150 | 51 | 70 | 78 | 82 | 53 | 43 | 73 |
| IDJJ Total | 256 | 149 | 154 | 191 | 157 | 171 | 123 | 184 |

Table 28b: Rate of Behavioral Hold

| | 1/23 | 2/23 | 3/23 | 4/23 | 5/23 | 6/23 | 7/23 | 8/23 |
|-----------------------|------------|-----------|-----------|------------|------------|------------|-----------|------------|
| Chicago | 28 | 31 | 16 | 14 | 33 | 35 | 4 | 27 |
| Harrisburg | 124 | 143 | 75 | 119 | 101 | 117 | 87 | 82 |
| Pere Marquette | 0 | 0 | 17 | 52 | 38 | 119 | 59 | 31 |
| St. Charles | 102 | 54 | 86 | 84 | 25 | 65 | 41 | 92 |
| Warrenville | 615 | 216 | 317 | 404 | 427 | 282 | 230 | 330 |
| IDJJ Average | 173 | 98 | 99 | 124 | 104 | 108 | 73 | 102 |

Table 28c: Average Length of Behavioral Hold

| | 1/23 | 2/23 | 3/23 | 4/23 | 5/23 | 6/23 | 7/23 | 8/23 |
|-----------------------|------------|------------|------------|------------|------------|------------|------------|------------|
| Chicago | 55 | 68 | 41 | 88 | 93 | 81 | 60 | 45 |
| Harrisburg | 140 | 112 | 86 | 124 | 140 | 135 | 127 | 145 |
| Pere Marquette | - | - | 107 | 28 | 33 | 76 | 83 | 92 |
| St. Charles | 60 | 100 | 90 | 70 | 86 | 98 | 88 | 69 |
| Warrenville | 140 | 156 | 154 | 117 | 146 | 118 | 131 | 117 |
| IDJJ Average | 125 | 122 | 117 | 106 | 134 | 116 | 119 | 108 |

Table 29: Use of Crisis Care

| | 1/23 | 2/23 | 3/23 | 4/23 | 5/23 | 6/23 | 7/23 | 8/23 |
|-----------------------|----------|----------|----------|-----------|----------|----------|-----------|----------|
| Chicago | - | - | - | - | - | - | - | 3 |
| Harrisburg | - | - | - | 2 | - | - | - | - |
| Pere Marquette | - | - | 1 | 4 | - | 2 | 1 | - |
| St. Charles | - | - | 1 | - | - | - | 2 | 1 |
| Warrenville | - | 2 | 1 | 4 | 2 | 3 | 9 | 2 |
| IDJJ Total | 0 | 2 | 3 | 10 | 2 | 5 | 12 | 6 |

Table 30: Use of Medical Hold

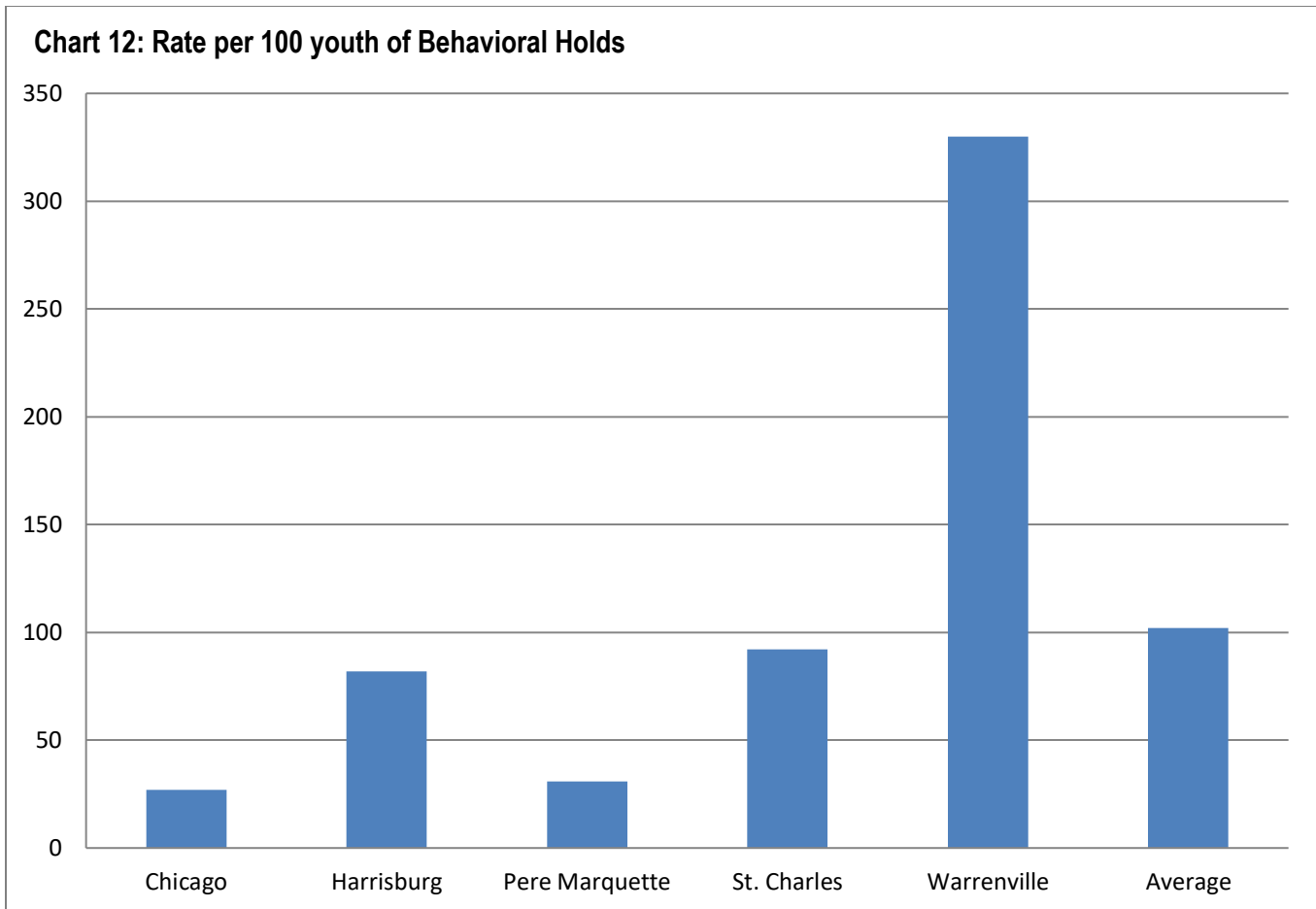
| | 1/23 | 2/23 | 3/23 | 4/23 | 5/23 | 6/23 | 7/23 | 8/23 |
|-----------------------|----------|----------|-----------|----------|----------|----------|----------|----------|
| Chicago | - | - | - | - | - | - | - | - |
| Harrisburg | - | - | - | - | - | - | - | - |
| Pere Marquette | - | - | - | 1 | - | - | - | - |
| St. Charles | 4 | 5 | 5 | - | 2 | 2 | - | - |
| Warrenville | - | - | 7 | - | 1 | - | - | - |
| IDJJ Average | 4 | 5 | 12 | 1 | 3 | 2 | 0 | 0 |

Table 31: Use of Administrative Hold

| | 1/23 | 2/23 | 3/23 | 4/23 | 5/23 | 6/23 | 7/23 | 8/23 |
|-----------------------|----------|-----------|-----------|-----------|------------|-----------|------------|------------|
| Chicago | - | - | - | - | - | - | - | - |
| Harrisburg | - | - | - | - | - | - | - | 80 |
| Pere Marquette | - | - | 1 | 2 | - | - | - | - |
| St. Charles | - | - | - | - | 50 | 2 | 1 | 14 |
| Warrenville | - | 18 | 74 | 24 | 50 | 45 | 162 | 267 |
| IDJJ Total | 0 | 18 | 75 | 26 | 100 | 47 | 163 | 361 |

Table 32: Use of Investigative Status

| | 1/23 | 2/23 | 3/23 | 4/23 | 5/23 | 6/23 | 7/23 | 8/23 |
|-----------------------|----------|----------|----------|----------|----------|----------|----------|-----------|
| Chicago | - | - | - | - | - | - | - | 8 |
| Harrisburg | - | - | - | - | - | - | - | - |
| Pere Marquette | - | - | - | - | - | - | - | - |
| St. Charles | - | - | - | - | - | - | - | - |
| Warrenville | - | - | 4 | - | - | - | - | 2 |
| IDJJ Total | 0 | 0 | 4 | 0 | 0 | 0 | 0 | 10 |



Section 8: Aftercare Data

Table 33: Youth Monitored by Aftercare

| | 1/23 | 2/23 | 3/23 | 4/23 | 5/23 | 6/23 | 7/23 | 8/23 |
|--|------|------|------|------|------|------|------|------|
| Total Number of Youth Assigned to Aftercare | 389 | 377 | 387 | 397 | 394 | 402 | 397 | 420 |
| Youth in Community | 175 | 167 | 172 | 190 | 189 | 181 | 180 | 194 |
| Youth in Facilities | 112 | 113 | 120 | 110 | 112 | 127 | 126 | 134 |
| Youth with Pending Criminal Cases | 89 | 85 | 82 | 80 | 81 | 82 | 81 | 82 |
| Youth with Warrants and Out of State | 13 | 12 | 13 | 17 | 12 | 12 | 10 | 10 |

Table 34: Caseloads in Aftercare (Average per Specialist)

| | 1/23 | 2/23 | 3/23 | 4/23 | 5/23 | 6/23 | 7/23 | 8/23 |
|-------------------------------------|------|------|------|------|------|------|------|------|
| Youth Assigned to Specialist | 6.2 | 6.3 | 6.3 | 6.5 | 6.5 | 6.7 | 7.5 | 8.0 |
| Youth in Community | 3.8 | 3.8 | 3.7 | 4.1 | 4.1 | 3.9 | 4.4 | 4.7 |
| Youth in Facilities | 2.4 | 2.5 | 2.6 | 2.4 | 2.4 | 2.8 | 3.1 | 3.3 |

Table 35: Average Specialist Caseload by Aftercare Office – August 2023

| | Number of Specialists | Number of Youth | Average Caseload | Number of Youth in Community | Average Caseload in Community |
|----------------------------|-----------------------|-----------------|------------------|------------------------------|-------------------------------|
| Chicago | 7 | 54 | 7.7 | 34 | 4.9 |
| Chicago Heights | 4 | 10 | 2.5 | 8 | 2 |
| Aurora | 2 | 18 | 9 | 13 | 6.5 |
| Rockford | 4 | 27 | 6.8 | 18 | 4.5 |
| Peoria | 4 | 51 | 12.8 | 33 | 8.3 |
| Belleville | 7 | 50 | 7.1 | 24 | 3.4 |
| Champaign | 4 | 34 | 8.5 | 19 | 4.8 |
| Springfield | 2 | 16 | 8 | 9 | 4.5 |
| Placement Intensive | 6 | 53 | 8.8 | 30 | 5 |
| Placement Intensive | 1 | 15 | 15 | 6 | 6 |
| IDJJ Total | 41 | 328 | 8.0 | 194 | 4.7 |

Table 36: Specialist Contact with Youth by Aftercare Office – August 2023

| | Number of Overall Contacts | Contacts per Youth | Contacts with Youth in Community | Contacts per Youth in Community |
|----------------------------|----------------------------|--------------------|----------------------------------|---------------------------------|
| Chicago | 142 | 2.6 | 125 | 3.7 |
| Chicago Heights | 73 | 7.3 | 53 | 6.6 |
| Aurora | 57 | 3.2 | 49 | 3.8 |
| Rockford | 110 | 4.1 | 98 | 5.4 |
| Peoria | 159 | 3.1 | 155 | 4.7 |
| Belleville | 109 | 2.2 | 101 | 4.2 |
| Champaign | 164 | 4.8 | 138 | 7.3 |
| Springfield | 91 | 5.7 | 69 | 7.7 |
| Placement Intensive | 169 | 3.2 | 137 | 4.6 |
| IDJJ Total | 1074 | 3.4 | 925 | 4.9 |

Table 37a: Parole Revocations

| | Parole Revocations Heard | Revocations Approved | Revocations Denied | Hearings Continued |
|---------------------|-----------------------------|-------------------------|-----------------------|-----------------------|
| <i>January</i> | 11 | 9 | 0 | 2 |
| <i>February</i> | 7 | 7 | 0 | 0 |
| <i>March</i> | 5 | 5 | 0 | 0 |
| <i>April</i> | 8 | 6 | 2 | 0 |
| <i>May</i> | 9 | 8 | 1 | 0 |
| <i>June</i> | 2 | 2 | 0 | 0 |
| <i>July</i> | 18 | 14 | 1 | 3 |
| <i>August</i> | 10 | 5 | 5 | 0 |
| IDJJ Average | 8.8 | 7 | 1.1 | 0.6 |

Table 37b: Parole Revocation Rates

| | Percent of Revocations Approved | Percent of Revocations Denied | Percent of Hearings Continued |
|---------------------|---------------------------------------|-------------------------------------|-------------------------------------|
| <i>January</i> | 81.8% | 0% | 18.2% |
| <i>February</i> | 100% | 0% | 0% |
| <i>March</i> | 100% | 0% | 0% |
| <i>April</i> | 75% | 25% | 0% |
| <i>May</i> | 88.9% | 11.1% | 0% |
| <i>June</i> | 100% | 0% | 0% |
| <i>July</i> | 77.8% | 5.6% | 16.7% |
| <i>August</i> | 50% | 50% | 0% |
| IDJJ Average | 84.2% | 11.5% | 4.4% |

With lower numbers of admission for technical parole violators, the numbers of parole revocation hearings held monthly has greatly decreased compared to previous years.

Section 9: Population Stock/Flow

Table 38: Institutional Stock/Flow

| | 1/23 | 2/23 | 3/23 | 4/23 | 5/23 | 6/23 | 7/23 | 8/23 |
|--|------|-------|-------|-------|-------|-------|-------|-------|
| Number of Admissions per Month | 36 | 26 | 37 | 29 | 26 | 42 | 33 | 50 |
| Percent of Admissions Parole Violators | 8.3% | 3.8% | 13.5% | 0% | 7.7% | 14.3% | 21.2% | 12% |
| Number of Facility Exits per Month | 25 | 22 | 36 | 36 | 22 | 29 | 32 | 43 |
| Percent of Exits to Aftercare Supervision | 88% | 81.8% | 91.7% | 88.9% | 90.9% | 86.2% | 96.9% | 97.7% |

Table 39: Aftercare Stock/Flow

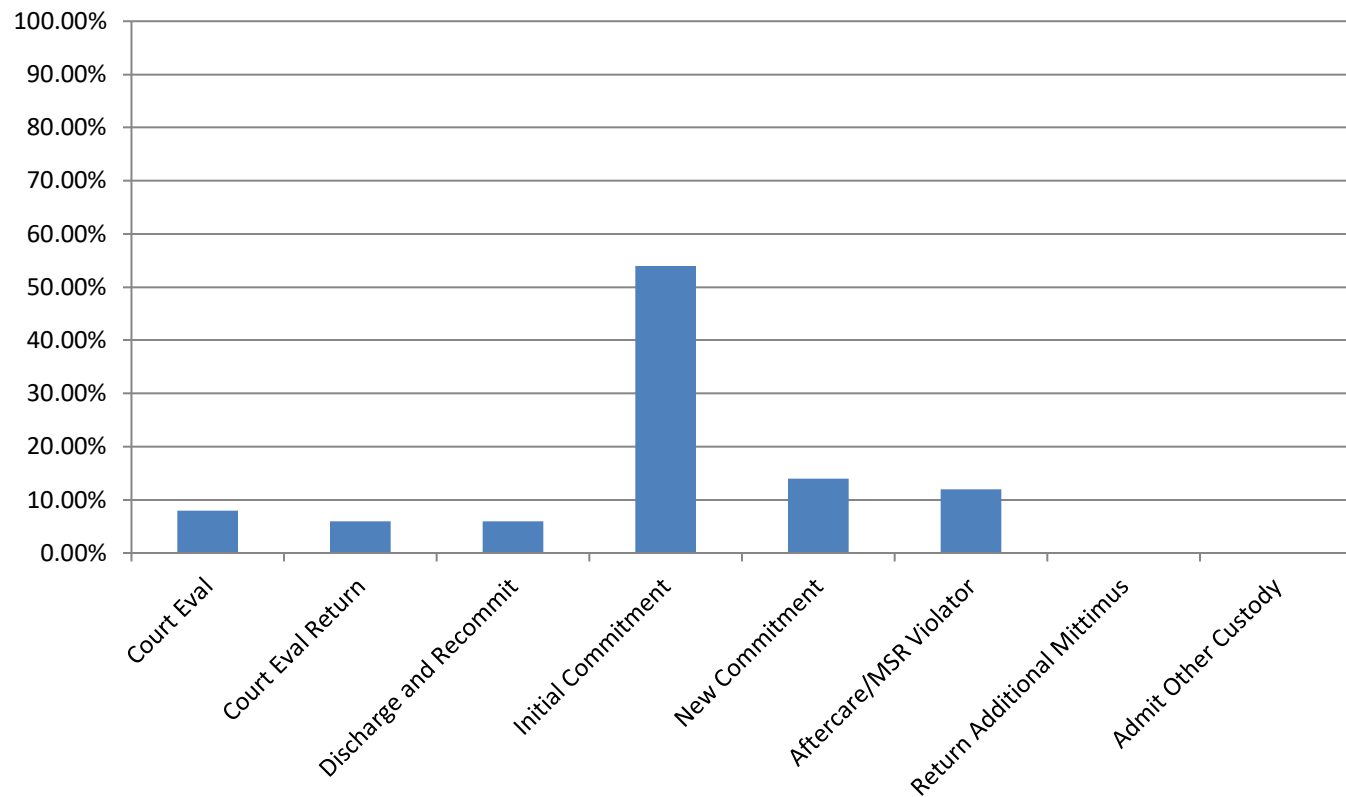
| | 1/23 | 2/23 | 3/23 | 4/23 | 5/23 | 6/23 | 7/23 | 8/23 |
|---------------------------------------|------|------|------|------|------|------|------|------|
| Number of New Supervised Youth | 22 | 18 | 34 | 36 | 20 | 25 | 31 | 43 |
| Number of Exits from Aftercare | 17 | 21 | 15 | 14 | 22 | 19 | 23 | 17 |

Table 40: Admissions to Facilities by Type

| | August 2023 | |
|-----------------------------------|-------------|---------|
| | Number | Percent |
| Court Evaluation | 4 | 8% |
| Court Evaluation Return | 3 | 6% |
| Discharged and Recommitted | 3 | 6% |
| Initial Commitment | 27 | 54% |
| New Commitment | 7 | 14% |
| Aftercare/MSR Violator | 6 | 12% |
| Return Additional Mittimus | 0 | 0% |
| Admit from Other Custody | 0 | 0% |
| Total | 50 | |

The decrease in DJJ populations is a direct effect of both decreasing court admissions, decreasing admissions for technical violations, and decreases in length of stay during the fiscal year. Additionally, rates and numbers of discharges from Aftercare have increased as well, which has helped those numbers stay lower as well, which provides fewer youth to be readmitted into facilities. Looking at the types of admissions to DJJ, a greater percent of youth are initial commitments than in previous years.

Chart 13: Admission Types to Facility, August 2023



Section 10: TRD Data for August 2023

Table 41: Adjustments by Facility

| | Reductions | Extensions |
|---------------------------|------------|------------|
| <i>IYC Chicago</i> | 29 | 13 |
| <i>IYC Harrisburg</i> | 93 | 50 |
| <i>IYC Pere Marquette</i> | 71 | 16 |
| <i>IYC St. Charles</i> | 77 | 10 |
| <i>IYC Warrenville</i> | 74 | 15 |
| Total | 344 | 104 |

Table 42: Types of Adjustments Used

| | CHI | HRG | PER | STC | WRV | DJJ Overall |
|-------------------------------------|-----|-----|-----|-----|-----|-------------|
| <i>BARJ Reduction</i> | 0 | 1 | 0 | 1 | 0 | 2 |
| <i>Delinquent Program Reduction</i> | 2 | 0 | 0 | 0 | 0 | 2 |
| <i>Ed/Voc Reduction</i> | 2 | 9 | 25 | 15 | 8 | 59 |
| <i>Grade Level Reduction</i> | 1 | 5 | 4 | 1 | 2 | 13 |
| <i>JSO Completion Reduction</i> | 0 | 0 | 0 | 0 | 0 | 0 |
| <i>No Maj. Sanc. Reductions</i> | 5 | 16 | 5 | 14 | 11 | 51 |
| <i>Other Tx Reduction</i> | 2 | 2 | 7 | 7 | 0 | 18 |
| <i>SA Completion Reduction</i> | 6 | 5 | 1 | 3 | 6 | 21 |
| <i>YASI Goal Reduction</i> | 11 | 55 | 29 | 36 | 47 | 178 |
| <i>Discipline Extension</i> | 13 | 50 | 16 | 10 | 15 | 104 |

Chart 14: Types of Adjustments used by Agency

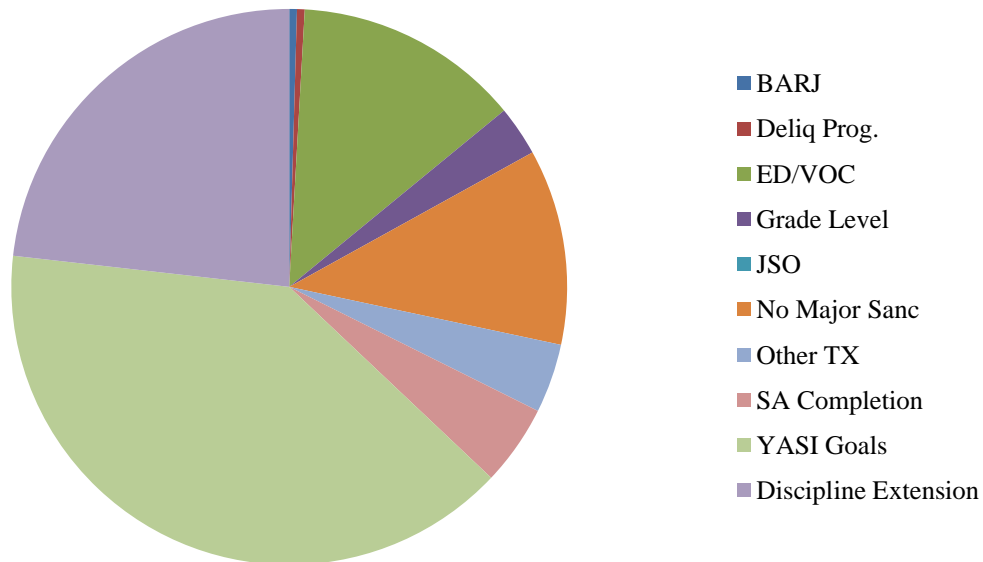


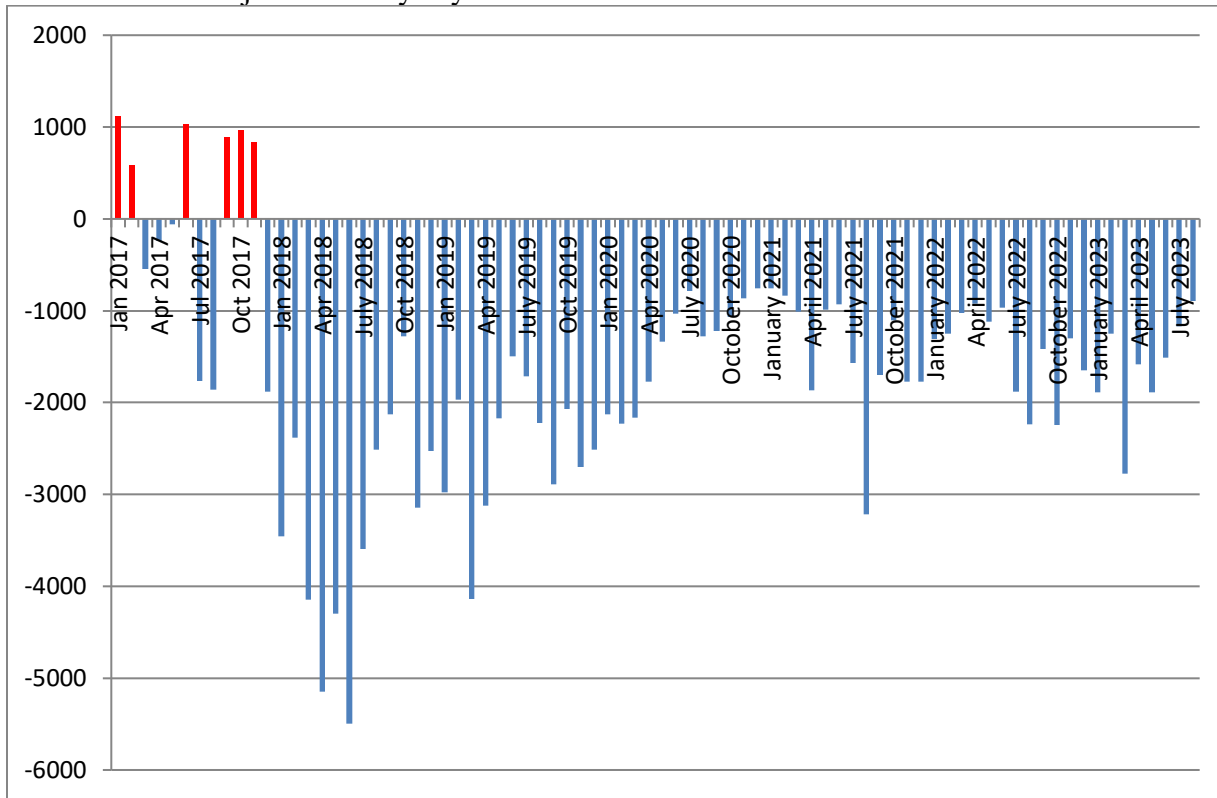
Table 45: Frequency of Discipline Extensions

| | 1/23 | 2/23 | 3/23 | 4/23 | 5/23 | 6/23 | 7/23 | 8/23 |
|----------------------------------|-----------|-----------|-----------|-----------|-----------|-----------|-----------|------------|
| <i>IYC Chicago</i> | 7 | 5 | 5 | 3 | 4 | 8 | 16 | 13 |
| <i>IYC Harrisburg</i> | 37 | 39 | 30 | 29 | 44 | 42 | 22 | 50 |
| <i>IYC Pere Marquette</i> | 0 | 1 | 3 | 5 | 7 | 4 | 13 | 16 |
| <i>IYC St. Charles</i> | 3 | 15 | 23 | 11 | 3 | 2 | 7 | 10 |
| <i>IYC Warrenville</i> | 30 | 18 | 20 | 11 | 5 | 22 | 4 | 15 |
| Total | 77 | 78 | 81 | 60 | 63 | 78 | 62 | 104 |

Table 46: Average Length of Discipline Extension

| | 1/23 | 2/23 | 3/23 | 4/23 | 5/23 | 6/23 | 7/23 | 8/23 |
|----------------------------------|----------|----------|-----------|----------|-----------|-----------|-----------|----------|
| <i>IYC Chicago</i> | 4 | 5 | 17 | 4 | 9 | 12 | 10 | 14 |
| <i>IYC Harrisburg</i> | 7 | 8 | 11 | 6 | 8 | 9 | 10 | 10 |
| <i>IYC Pere Marquette</i> | - | 3 | 9 | 9 | 12 | 4 | 10 | 6 |
| <i>IYC St. Charles</i> | 16 | 11 | 10 | 17 | 27 | 28 | 13 | 7 |
| <i>IYC Warrenville</i> | 7 | 12 | 6 | 6 | 13 | 12 | 16 | 7 |
| Average | 7 | 9 | 10 | 9 | 12 | 10 | 11 | 9 |

Summed Total Adjustment Days by Month



Section 11: YASI

Table 47: YASI Pre-Screens: August 2023

| | Legal Risk | Social Risk | Protective | Overall Risk |
|-----------------|------------|-------------|------------|--------------|
| <i>High</i> | 82 | 65 | 8 | 86 |
| <i>Moderate</i> | 25 | 42 | 33 | 22 |
| <i>Low</i> | 1 | 1 | 67 | 0 |
| Total | 108 | 108 | 108 | 108 |

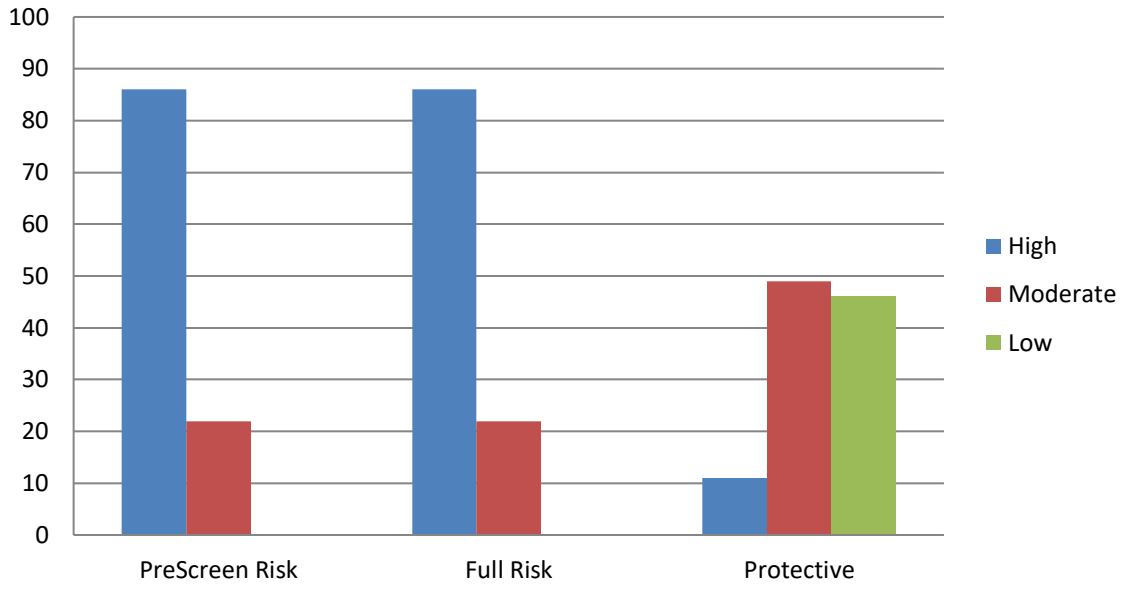
Table 48: YASI Full Assessments: Risk

| | Dynamic | Static | Overall |
|----------------------|------------|------------|------------|
| <i>Very High</i> | 24 | - | - |
| <i>High</i> | 21 | 103 | 86 |
| <i>Moderate-High</i> | 35 | - | - |
| <i>Moderate</i> | 20 | 4 | 22 |
| <i>Low-Moderate</i> | 6 | - | - |
| <i>Low</i> | 2 | 1 | 0 |
| <i>None</i> | 0 | 0 | 0 |
| Total | 108 | 108 | 108 |

Table 49: YASI Full Assessments: Protective

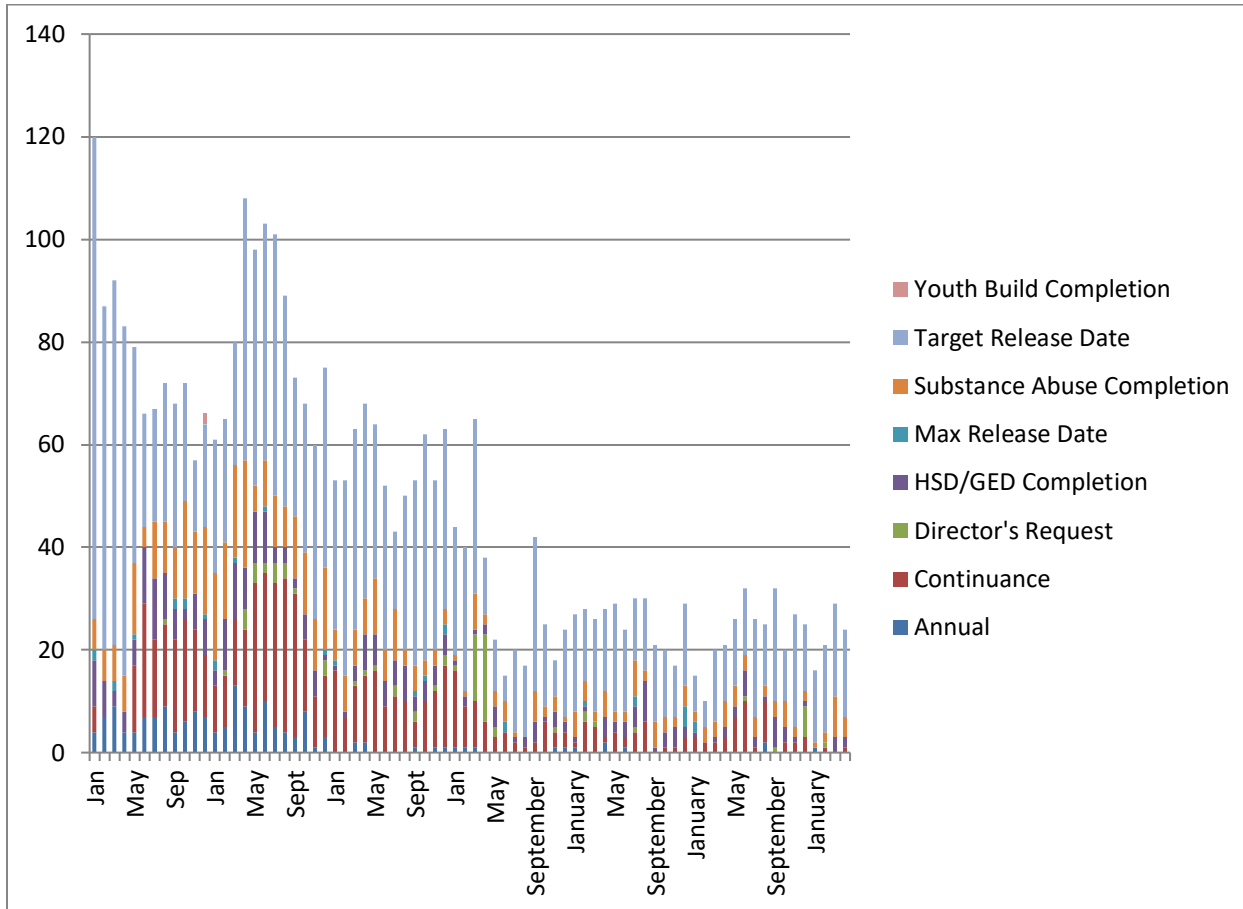
| | Dynamic | Static | Overall |
|----------------------|------------|------------|------------|
| <i>Very High</i> | 0 | - | - |
| <i>High</i> | 6 | 13 | 11 |
| <i>Moderate-High</i> | 23 | - | - |
| <i>Moderate</i> | 40 | 12 | 49 |
| <i>Low-Moderate</i> | 18 | - | - |
| <i>Low</i> | 19 | 11 | 46 |
| <i>None</i> | 2 | 72 | 2 |
| Total | 108 | 108 | 108 |

Chart 16: Risk and Protective Levels of Youth



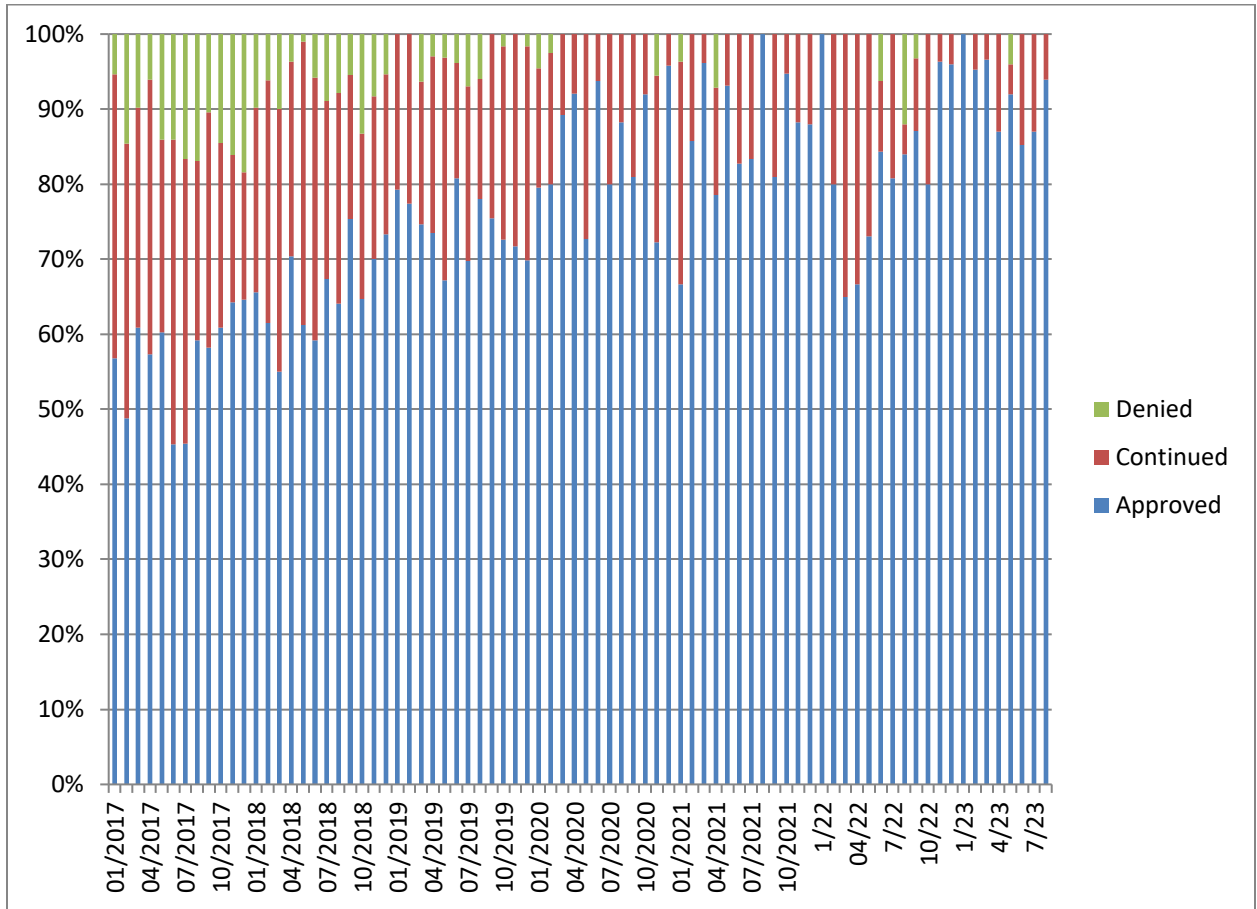
Release Reviews

Reviews by Type per Month



| | Annual | Cont. | Director's Request | HSD/GED | Max Release Date | Substance Abuse | Target Release Date | Total |
|----------|--------|-------|--------------------|---------|------------------|-----------------|---------------------|--------------|
| January | 1 | 0 | 0 | 0 | 0 | 1 | 14 | 16 |
| February | 0 | 1 | 1 | 0 | 0 | 2 | 17 | 21 |
| March | 0 | 0 | 0 | 3 | 0 | 8 | 18 | 29 |
| April | 0 | 1 | 0 | 2 | 0 | 4 | 17 | 24 |
| May | 0 | 1 | 0 | 2 | 1 | 2 | 19 | 25 |
| June | 0 | 0 | 1 | 4 | 0 | 1 | 21 | 27 |
| July | 3 | 2 | 3 | 3 | 0 | 2 | 11 | 24 |
| August | 0 | 2 | 7 | 1 | 0 | 6 | 18 | 34 |

Percent of Release Reviews by Outcome and Month



Demographic Profile for August 31st, 2023

| Sex | Institutions | | Aftercare | |
|--------|--------------|---------|-----------|---------|
| | Number | Percent | Number | Percent |
| Male | 168 | 97.1% | 269 | 94.4% |
| Female | 5 | 2.9% | 16 | 5.6% |

| Age | Institutions | | Aftercare | |
|-------------|--------------|---------|-----------|---------|
| | Number | Percent | Number | Percent |
| Average Age | 17.4 | | 18.1 | |
| 16 & Under | 65 | 37.8% | 61 | 21.4% |
| 17 to 20 | 104 | 60.5% | 213 | 74.7% |
| 20.5 & Over | 3 | 1.7% | 10 | 3.5% |

| Race/Ethnicity | Institutions | | Aftercare | |
|------------------------|--------------|---------|-----------|---------|
| | Number | Percent | Number | Percent |
| White | 25 | 14.5% | 52 | 18.2% |
| Black | 127 | 73.4% | 202 | 70.9% |
| Hispanic | 13 | 7.5% | 19 | 6.7% |
| Asian/Pacific Islander | 0 | 0% | 0 | 0% |
| Multi/Biracial | 8 | 4.6% | 12 | 4.3% |

| Committing Counties ¹ | Institutions | | Aftercare | |
|----------------------------------|--------------|---------|-----------|---------|
| | Number | Percent | Number | Percent |
| Cook | 40 | 23.1% | 77 | 27.0% |
| Collar Counties | 8 | 4.6% | 18 | 6.3% |
| Metro-East | 13 | 7.5% | 16 | 5.6% |
| Central | 67 | 38.7% | 106 | 37.2% |
| Southern | 17 | 9.8% | 18 | 6.3% |
| Northern | 28 | 16.2% | 45 | 15.8% |
| Out of State | 0 | 0% | 5 | 1.8% |

¹ Committing Counties: Cook = Cook; Collar Counties = DuPage, Kane, Lake, McHenry, Will; Metro East Counties = Madison, St. Clair; Central IL Counties = Adams, Bond, Brown, Calhoun, Cass, Champaign, Christian, Clark, Coles, Crawford, Cumberland, Dewitt, Douglas, Edgar, Effingham, Fayette, Ford, Fulton, Greene, Hancock, Henderson, Iroquois, Jasper, Jersey, Knox, Livingston, Logan, McDonough, McLean, Macon, Macoupin, Marshall, Mason, Menard, Montgomery, Morgan, Moultrie, Peoria, Piatt, Pike, Sangamon, Schuyler, Scott, Shelby, Stark, Tazewell, Vermillion Warren, Woodford; South IL Counties = Alexander, Clay, Clinton, Edwards, Franklin, Gallatin, Hamilton, Hardin, Jackson, Jefferson, Johnson, Lawrence, Marion, Massac, Monroe, Perry, Pope, Pulaski, Randolph, Richland, Saline, Union, Wabash, Washington, Wayne, White, Williamson; North, IL Counties = Boone, Bureau, Carroll, DeKalb, Grundy, Henry, Jo-Daviess, Kankakee, Kendall, LaSalle, Lee, Mercer, Ogle, Putnam, Rock Island, Stephenson, Whiteside, Winnebago; Other = Out of State

| Offense Class | Institutions | | Aftercare | |
|----------------|--------------|---------|-----------|---------|
| | Number | Percent | Number | Percent |
| Murder | 19 | 11.0% | 1 | 0.4% |
| Class X Felony | 48 | 27.7% | 73 | 25.6% |
| Class 1 Felony | 40 | 23.1% | 62 | 21.8% |
| Class 2 Felony | 41 | 23.7% | 98 | 34.4% |
| Class 3 Felony | 13 | 7.5% | 22 | 7.7% |
| Class 4 Felony | 12 | 6.9% | 24 | 8.4% |

| Offense Class by Race | Black | White | Hispanic | Bi/Multiracial |
|-----------------------|------------|-----------|-----------|----------------|
| Murder | 15 | 1 | 3 | 0 |
| Class X Felony | 92 | 17 | 10 | 2 |
| Class 1 Felony | 79 | 16 | 3 | 4 |
| Class 2 Felony | 93 | 27 | 11 | 8 |
| Class 3 Felony | 19 | 10 | 3 | 3 |
| Class 4 Felony | 28 | 4 | 1 | 3 |
| Total | 326 | 76 | 31 | 20 |

This table provides a summary of all youth in DJJ (both facilities and Aftercare) relating to their race and holding offense crime class. The numbers in the table and the raw number of youth in a category.

| Prefix | Institutions | | Aftercare | |
|-----------------------|--------------|---------|-----------|---------|
| | Number | Percent | Number | Percent |
| Court Evaluation | 9 | 5.2% | 1 | 0.4% |
| Delinquent | 94 | 54.3% | 253 | 88.8% |
| Extended Jurisdiction | 9 | 5.2% | 8 | 2.8% |
| Felon | 44 | 25.4% | 2 | 0.7% |
| First Degree Murderer | 8 | 4.6% | 1 | 0.4% |
| Habitual Juvenile | 1 | 0.6% | 2 | 0.7% |
| Violent Juvenile | 8 | 4.6% | 13 | 4.6% |
| From Other State | 0 | 0% | 5 | 1.8% |

Aftercare Completion – August 2023

Characteristics of Youth at Exiting Aftercare

Youth exiting aftercare are youth that are being discharged from IDJJ custody and youth that are entering an IDJJ facility

| Sex | Aftercare Exits | |
|--------|-----------------|---------|
| | Number | Percent |
| Male | 27 | 93.1% |
| Female | 2 | 6.9% |

| Age | Aftercare Exits | |
|-------------|-----------------|---------|
| | Number | Percent |
| Average Age | | |
| 16 & Under | 8 | 27.6% |
| 17 to 20 | 19 | 65.5% |
| 20.5 & Over | 2 | 6.9% |

| Committing Counties ² | Aftercare Exits | |
|----------------------------------|-----------------|---------|
| | Number | Percent |
| Cook | 2 | 6.9% |
| Collar Counties | 3 | 10.3% |
| Metro-East | 1 | 3.4% |
| Central | 13 | 44.8% |
| Southern | 4 | 13.8% |
| Northern | 6 | 20.7% |
| Out of State | 0 | 0% |

| Race/Ethnicity | Aftercare Exits | |
|------------------------|-----------------|---------|
| | Number | Percent |
| White | 2 | 6.9% |
| Black | 22 | 75.9% |
| Hispanic | 3 | 10.3% |
| Asian/Pacific Islander | 0 | 0% |
| Multi/Biracial | 2 | 6.9% |

² Committing Counties: Cook = Cook; Collar Counties = DuPage, Kane, Lake, McHenry, Will; Metro East Counties = Madison, St. Clair; Central IL Counties = Adams, Bond, Brown, Calhoun, Cass, Champaign, Christian, Clark, Coles, Crawford, Cumberland, Dewitt, Douglas, Edgar, Effingham, Fayette, Ford, Fulton, Greene, Hancock, Henderson, Iroquois, Jasper, Jersey, Knox, Livingston, Logan, McDonough, McLean, Macon, Macoupin, Marshall, Mason, Menard, Montgomery, Morgan, Moultrie, Peoria, Piatt, Pike, Sangamon, Schuyler, Scott, Shelby, Stark, Tazewell, Vermillion Warren, Woodford; South IL Counties = Alexander, Clay, Clinton, Edwards, Franklin, Gallatin, Hamilton, Hardin, Jackson, Jefferson, Johnson, Lawrence, Marion, Massac, Monroe, Perry, Pope, Pulaski, Randolph, Richland, Saline, Union, Wabash, Washington, Wayne, White, Williamson; North, IL Counties = Boone, Bureau, Carroll, DeKalb, Grundy, Henry, Jo-Daviess, Kankakee, Kendall, LaSalle, Lee, Mercer, Ogle, Putnam, Rock Island, Stephenson, Whiteside, Winnebago; Other = Out of State

| Offense Class | Aftercare Exits | |
|----------------|-----------------|---------|
| | Number | Percent |
| Murder | 0 | 0% |
| Class X Felony | 5 | 17.2% |
| Class 1 Felony | 6 | 20.7% |
| Class 2 Felony | 12 | 41.4% |
| Class 3 Felony | 0 | 0% |
| Class 4 Felony | 6 | 20.7% |

| Prefix | Aftercare Exits | |
|-----------------------|-----------------|---------|
| | Number | Percent |
| Court Evaluation | 0 | 0% |
| Delinquent | 25 | 86.2% |
| Extended Jurisdiction | 1 | 3.4% |
| Felon | 2 | 6.9% |
| First Degree Murderer | 0 | 0% |
| Habitual Juvenile | 1 | 3.4% |
| Violent Juvenile | 0 | 0% |
| From Other State | 0 | 0% |

| Discharge Reason | Aftercare Exits | |
|-------------------------------------|-----------------|---------|
| | Number | Percent |
| Admitted to Institution | 13 | 44.8% |
| Aftercare Discharge | 8 | 27.6% |
| Adult Sentence Discharge | 5 | 17.2% |
| Transfer to Adult Parole | 1 | 3.4% |
| Court Ordered Discharge | 0 | 0% |
| Discharged from Illinois Custody | 0 | 0% |
| Statutory Discharge | 2 | 6.9% |
| Death | 0 | 0% |
| Vacated Commitment Order | 0 | 0% |
| Expiration of Sentence | 0 | 0% |

Youth Outcomes at Discharge from Aftercare – 2023

These are youth to date youth outcomes are for youth discharging aftercare and excludes youth still under IDJJ supervision in facilities

