



**Monthly Report:  
May 2024**

**FY2024**

## Section 1: Population and Staffing Data

Table 1a: Population by Facility

	7/23	8/23	9/23	10/23	11/23	12/23	1/24	2/24	3/24	4/24	5/24
<b>Chicago</b>	29	36	36	35	40	39	41	40	37	41	39
<b>Harrisburg</b>	59	55	54	57	61	59	55	56	50	56	49
<b>Pere Marquette</b>	10	10	14	13	13	13	13	12	15	13	13
<b>St. Charles</b>	48	53	55	58	53	33	32	21	29	24	23
<b>Warrenville</b>	21	21	21	16	15	21	26	28	29	31	33
<b>IDJJ Total</b>	<b>167</b>	<b>175</b>	<b>180</b>	<b>179</b>	<b>182</b>	<b>165</b>	<b>167</b>	<b>157</b>	<b>160</b>	<b>165</b>	<b>157</b>

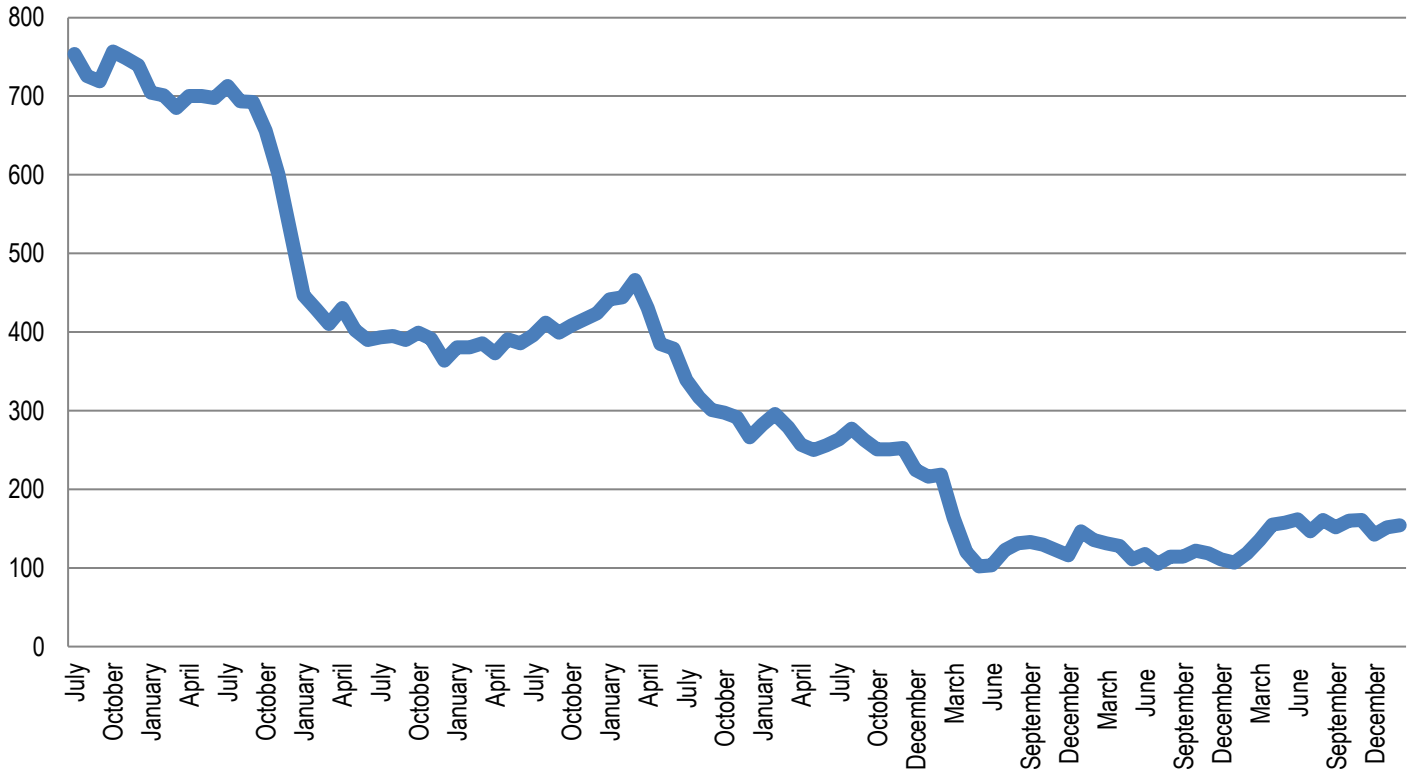
Table 1b: Average Daily Population by Facility

	7/23	8/23	9/23	10/23	11/23	12/23	1/24	2/24	3/24	4/24	5/24
<b>Chicago</b>	28.4	33.8	36.5	34.3	35.9	39.8	39.4	40.7	37.8	42.2	39.8
<b>Harrisburg</b>	58.5	61.3	54.9	55.8	57.6	58.9	56.4	54.1	54.4	54.4	53.6
<b>Pere Marquette</b>	10.2	9.8	10.9	12.7	12.3	12.9	12.3	13.5	13.2	12.8	12.5
<b>St. Charles</b>	53.1	53.2	55.0	58.5	57.5	40.7	35.4	24.6	25.4	24.8	22.2
<b>Warrenville</b>	18.7	22.1	20.7	19.5	16.1	19.3	23.2	26.8	28.5	28.0	33.9
<b>IDJJ Total</b>	<b>168.8</b>	<b>180.3</b>	<b>178.0</b>	<b>180.9</b>	<b>179.5</b>	<b>171.6</b>	<b>166.6</b>	<b>159.7</b>	<b>159.3</b>	<b>162.2</b>	<b>162.1</b>

Table 2: Security Staff Headcount by Facility

	7/23	8/23	9/23	10/23	11/23	12/23	1/24	2/24	3/24	4/24	5/24
<b>Chicago</b>	57	57	60	69	65	65	70	70			
<b>Harrisburg</b>	90	93	90	105	106	103	109	110			
<b>Pere Marquette</b>	39	41	40	43	41	41	43	40			
<b>St. Charles</b>	75	76	71	76	70	71	67	66			
<b>Warrenville</b>	48	44	43	49	50	50	62	60			
<b>IDJJ Total</b>	<b>309</b>	<b>311</b>	<b>304</b>	<b>342</b>	<b>332</b>	<b>330</b>	<b>351</b>	<b>346</b>			

**Chart 1: Facility Populations on Last Day of Month Last Nine Fiscal Years**



## Section 2: Mental Health Data

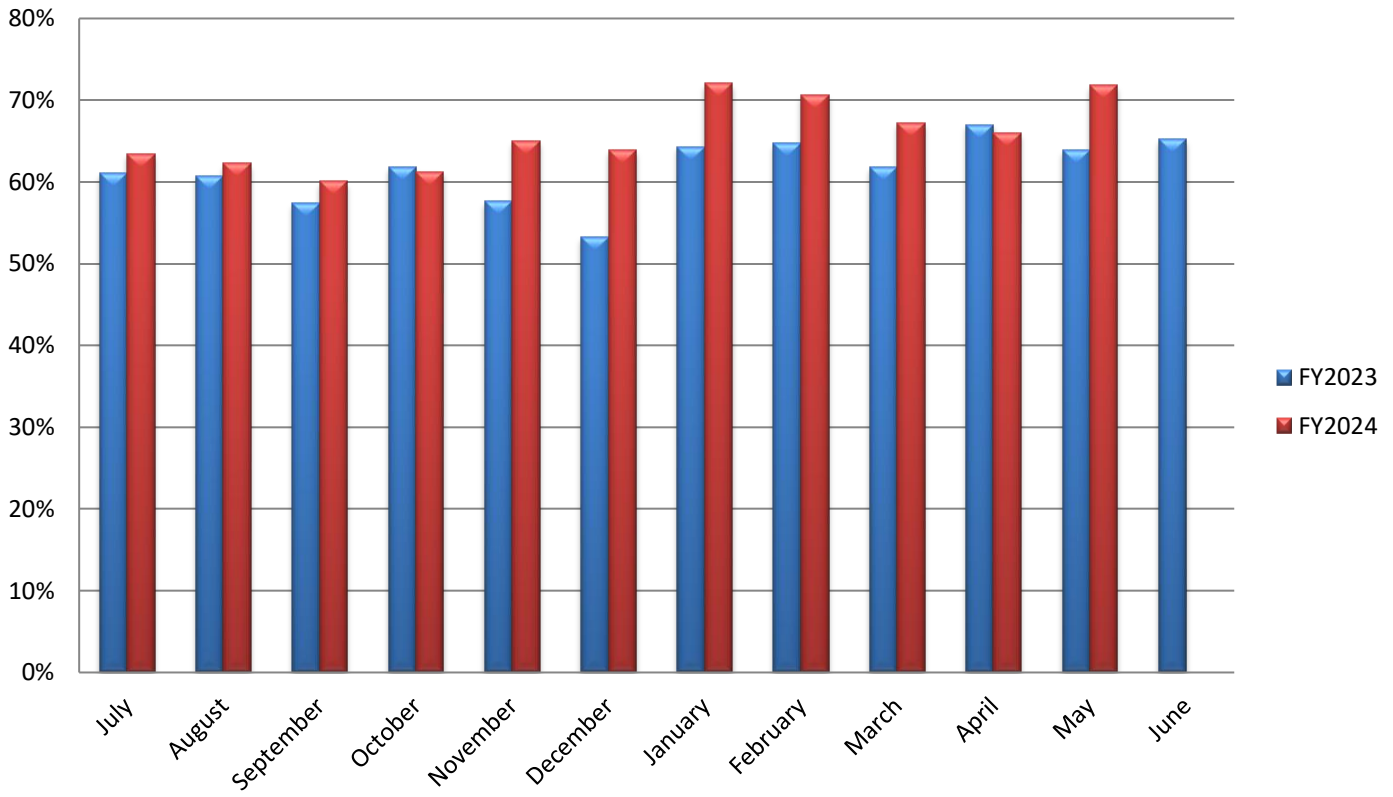
Table 5: Percent of Youth Psychotropic Medication

	7/23	8/23	9/23	10/23	11/23	12/23	1/24	2/24	3/24	4/24	5/24
<b>Chicago</b>	51.4%	66.7%	63.3%	55.9%	74.6%	75.4%	90.2%	86.0%	70.0%	71.9%	66.1%
<b>Harrisburg</b>	72.0%	65.1%	65.1%	60.9%	71.3%	70.4%	61.4%	70.7%	62.7%	63.3%	69.4%
<b>Pere Marquette</b>	75%	62.5%	62.5%	73.7%	77.8%	80%	68.8%	68.8%	67.7%	70.6%	63.2%
<b>St. Charles</b>	53.8%	52.7%	53.5%	51.2%	64.6%	33.9%	65.9%	51.2%	57.5%	44.4%	65.7%
<b>Warrenville</b>	75%	71.1%	57.8%	100%	80%	77.8%	81.8%	73.5%	85.7%	86.8%	95%
<b>IDJJ Average</b>	<b>63.4%</b>	<b>62.2%</b>	<b>60.0%</b>	<b>61.2%</b>	<b>65.0%</b>	<b>63.9%</b>	<b>72.0%</b>	<b>70.6%</b>	<b>67.2%</b>	<b>66.0%</b>	<b>71.8%</b>

Table 7: Distribution of Mental Health Levels

	Mental Health Level 0	Mental Health Level 1	Mental Health Level 2	Mental Health Level 3	Mental Health Level 3.5	Mental Health Level 4
<b>July</b>	0.0%	30.6%	66.3%	2.6%	0.0%	0.5%
<b>August</b>	0.0%	34.9%	60.5%	4.7%	0.0%	0.0%
<b>September</b>	0.0%	31.8%	61.8%	6.5%	0.0%	0.0%
<b>October</b>	0.0%	42.1%	53.5%	4.5%	0.0%	0.0%
<b>November</b>	0.0%	36.1%	60.6%	2.9%	0.5%	0.0%
<b>December</b>	0.0%	36.3%	58.8%	4.9%	0.0%	0.0%
<b>January</b>	0.0%	35.5%	61.4%	3.0%	0.0%	0.0%
<b>February</b>	0.0%	37.0%	59.2%	3.8%	0.0%	0.0%
<b>March</b>	0.0%	38.3%	56.1%	5.6%	0.0%	0.0%
<b>April</b>	0.0%	35.6%	58.4%	5.9%	0.0%	0.0%
<b>May</b>	0.0%	34.0%	61.9%	4.1%	0.0%	0.0%
<b>IDJJ Average</b>	<b>0.0%</b>	<b>35.7%</b>	<b>59.9%</b>	<b>4.4%</b>	<b>0.1%</b>	<b>0.1%</b>

### Percent of Youth on Psychotropic Medication by Fiscal Year



### Section 3: Substance Abuse Treatment Data

Table 9: Number of Treatment Participants

	7/23	8/23	9/23	10/23	11/23	12/23	1/24	2/24	3/24	4/24	5/24
<b>Chicago</b>	12	11	11	7	12	12	9	13	11	8	13
<b>Harrisburg</b>	13	19	19	25	21	23	18	19	22	17	18
<b>Pere Marquette</b>	1	4	4	2	4	4	6	6	4	5	3
<b>St. Charles</b>	3	4	4	5	4	4	2	3	3	2	1
<b>Warrenville</b>	4	7	5	6	5	9	10	10	7	8	9
<b>IDJJ Total</b>	<b>33</b>	<b>45</b>	<b>43</b>	<b>47</b>	<b>46</b>	<b>52</b>	<b>45</b>	<b>51</b>	<b>47</b>	<b>40</b>	<b>44</b>

Table 10: Average Length of Stay for Completers

	7/23	8/23	9/23	10/23	11/23	12/23	1/24	2/24	3/24	4/24	5/24
<b>Chicago</b>	102	91	91	83	64	81	-	-	103	152	94
<b>Harrisburg</b>	85	60	60	58	-	72	-	86	89		90
<b>Pere Marquette</b>	-	-	-	-	-	-	90	90	-	105	90
<b>St. Charles</b>	-	-	-	90	-	-	-	-	-	47	90
<b>Warrenville</b>	90	-	-	-	-	-	-	90	-	92	-
<b>IDJJ Average</b>	<b>90</b>	<b>75</b>	<b>75</b>	<b>81</b>	<b>64</b>	<b>78</b>	<b>90</b>	<b>89</b>	<b>96</b>	<b>106</b>	<b>91</b>

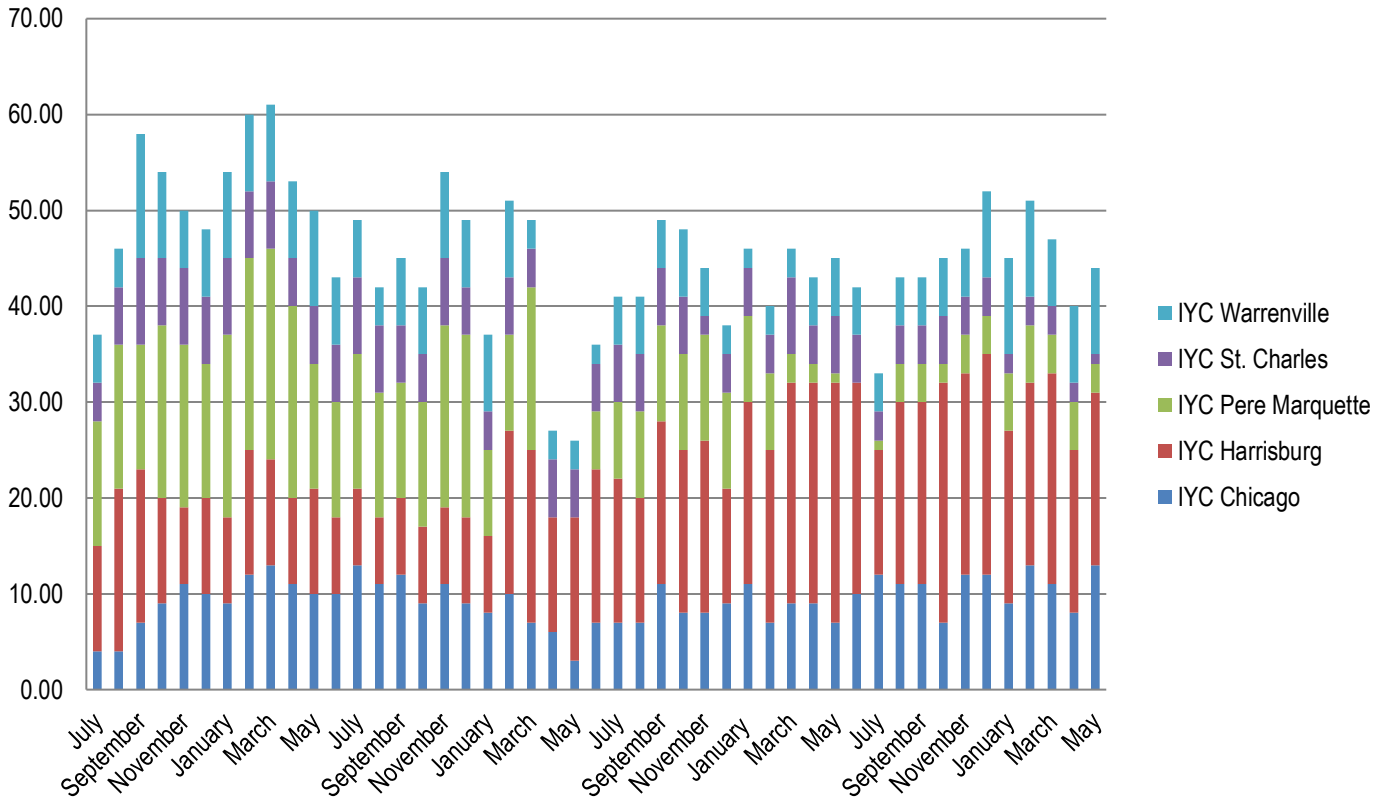
Table 11: Percent of Discharges by Reason

	7/23	8/23	9/23	10/23	11/23	12/23	1/24	2/24	3/24	4/24	5/24
<b>Successful Completion</b>	66.7%	33.3%	33.3%	52.4%	20%	38.9%	12.5%	40%	60%	50%	46.2%
<b>Behavioral Discharge</b>	0%	0%	0%	0%	20%	0%	0%	0%	0%	0%	0%
<b>Youth Released</b>	22.2%	55.6%	55.6%	38.1%	40%	55.6%	75%	40%	40%	50%	30.8%
<b>Other Discharge</b>	11.1%	11.1%	11.1%	9.5%	20%	5.6%	12.5%	20%	0%	0%	23.1%

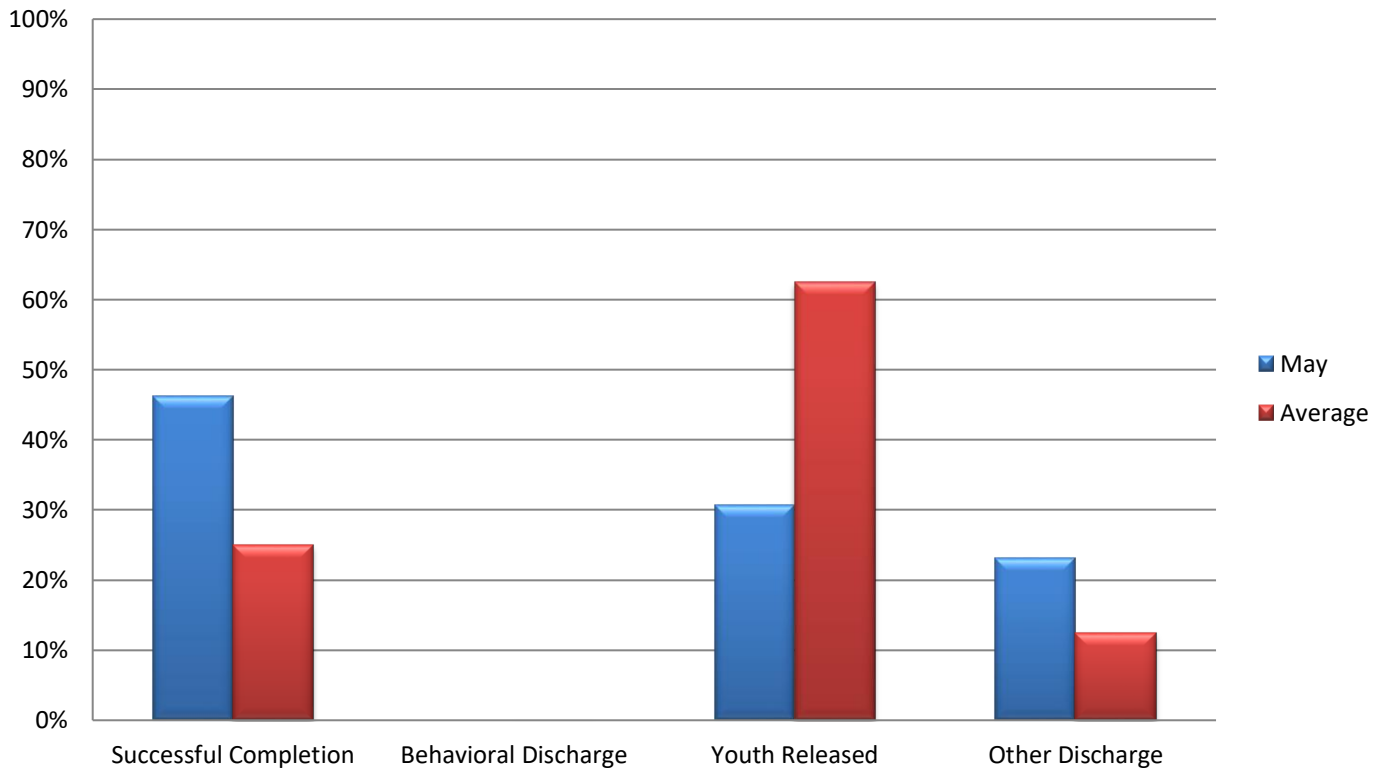
Table 12: Primary Substance Abused

	7/23	8/23	9/23	10/23	11/23	12/23	1/24	2/24	3/24	4/24	5/24
<b>Marijuana</b>	63.3%	67.4%	67.4%	71.9%	65.7%	63.4%	61.4%	63.3%	43.2%	50%	54.5%
<b>Alcohol</b>	13.3%	2.3%	2.3%	6.3%	11.4%	12.2%	6.8%	4.1%	6.8%	0%	0%
<b>Opioids</b>	13.3%	9.3%	9.3%	0%	5.7%	7.3%	9.1%	12.2%	18.2%	15.6%	13.6%
<b>Other Drugs</b>	10.0%	20.9%	20.9%	21.9%	17.1%	17.1%	22.7%	20.4%	31.8%	34.3%	29.5%
<b>No Diagnosis</b>	0%	0%	0%	0%	0%	0%	0%	0%	0%	0%	2.3%

**Chart 5: Number of Treatment Participants by Facility**



**Chart 6: Discharges by Reason**



## Section 4: Education Data

Table 13: Students Enrolled in School

	7/23	8/23	9/23	10/23	11/23	12/23	1/24	2/24	3/24	4/24	5/24
<b>Chicago</b>	16	21	17	19	24	25	31	24	24	24	23
<b>Harrisburg</b>	60	70	61	72	57	64	61	58	62	56	55
<b>Pere Marquette</b>	7	5	7	10	8	9	8	7	8	8	6
<b>St. Charles</b>	24	25	33	31	22	15	-	-	-	-	-
<b>Warrenville</b>	16	18	20	15	15	21	25	26	30	29	31
<b>IDJJ Total</b>	<b>123</b>	<b>139</b>	<b>138</b>	<b>147</b>	<b>126</b>	<b>134</b>	<b>125</b>	<b>115</b>	<b>124</b>	<b>117</b>	<b>115</b>

Table 14: Teachers Employed

	7/23	8/23	9/23	10/23	11/23	12/23	1/24	2/24	3/24	4/24	5/24
<b>Chicago</b>	7	7	7	6	6	6	7	7	7	7	6
<b>Harrisburg</b>	11	11	11	11	11	11	11	10	10	10	11
<b>Pere Marquette</b>	6	6	6	6	6	6	6	6	6	6	6
<b>St. Charles</b>	5	5	5	5	5	5	1	1	1	1	1
<b>Warrenville</b>	4	3	3	3	3	3	6	6	6	6	6
<b>IDJJ Total</b>	<b>33</b>	<b>32</b>	<b>32</b>	<b>31</b>	<b>31</b>	<b>31</b>	<b>31</b>	<b>30</b>	<b>30</b>	<b>30</b>	<b>30</b>

Table 15: Student to Teacher Ratio

	1/24	2/24	3/24	4/24	5/24
<b>Chicago</b>	4.4	3.4	3.4	3.4	3.8
<b>Harrisburg</b>	5.5	5.8	6.2	5.6	5
<b>Pere Marquette</b>	1.3	1.2	1.3	1.3	1
<b>St. Charles</b>	-	-	-	-	-
<b>Warrenville</b>	4.2	4.3	5	4.8	5.2
<b>IDJJ Average</b>	<b>4.0</b>	<b>3.8</b>	<b>4.1</b>	<b>3.9</b>	<b>3.8</b>

Table 17: Overall Diplomas Awarded

	7/23	8/23	9/23	10/23	11/23	12/23	1/24	2/24	3/24	4/24	5/24	Total
<b>Chicago</b>	0	0	0	1	0	0	0	3	1	4	1	<b>10</b>
<b>Harrisburg</b>	1	1	0	0	2	0	1	4	1	2	4	<b>16</b>
<b>Pere Marquette</b>	0	1	3	1	0	1	1	3	1	1	1	<b>12</b>
<b>St. Charles</b>	1	2	0	4	1	0	-	-	-	-	-	<b>8</b>
<b>Warrenville</b>	2	1	0	0	1	0	0	1	1	2	8	<b>16</b>
<b>IDJJ Total</b>	<b>4</b>	<b>5</b>	<b>3</b>	<b>6</b>	<b>4</b>	<b>1</b>	<b>2</b>	<b>11</b>	<b>4</b>	<b>9</b>	<b>14</b>	<b>62</b>

Table 18: Percent of Special Education Students

	7/23	8/23	9/23	10/23	11/23	12/23	1/24	2/24	3/24	4/24	5/24
<b>Chicago</b>	56.3%	33.3%	47.1%	57.9%	58.3%	56.0%	35.5%	37.5%	41.7%	33.3%	47.8%
<b>Harrisburg</b>	50.0%	50%	42.6%	36.1%	56.1%	50.0%	49.2%	44.9%	41.9%	53.6%	45.5%
<b>Pere Marquette</b>	71.4%	80%	42.9%	30%	37.5%	22.2%	50%	71.4%	25%	25%	33.3%
<b>St. Charles</b>	20.8%	40%	42.4%	51.6%	40.9%	53.3%	-	-	-	-	-
<b>Warrenville</b>	68.8%	61.1%	60%	80%	66.7%	57.1%	64%	57.7%	53.3%	62.1%	58.1%
<b>IDJJ Total</b>	<b>48.8%</b>	<b>48.2%</b>	<b>45.7%</b>	<b>46.3%</b>	<b>54.0%</b>	<b>50.7%</b>	<b>48.8%</b>	<b>47.8%</b>	<b>43.5%</b>	<b>49.6%</b>	<b>48.7%</b>



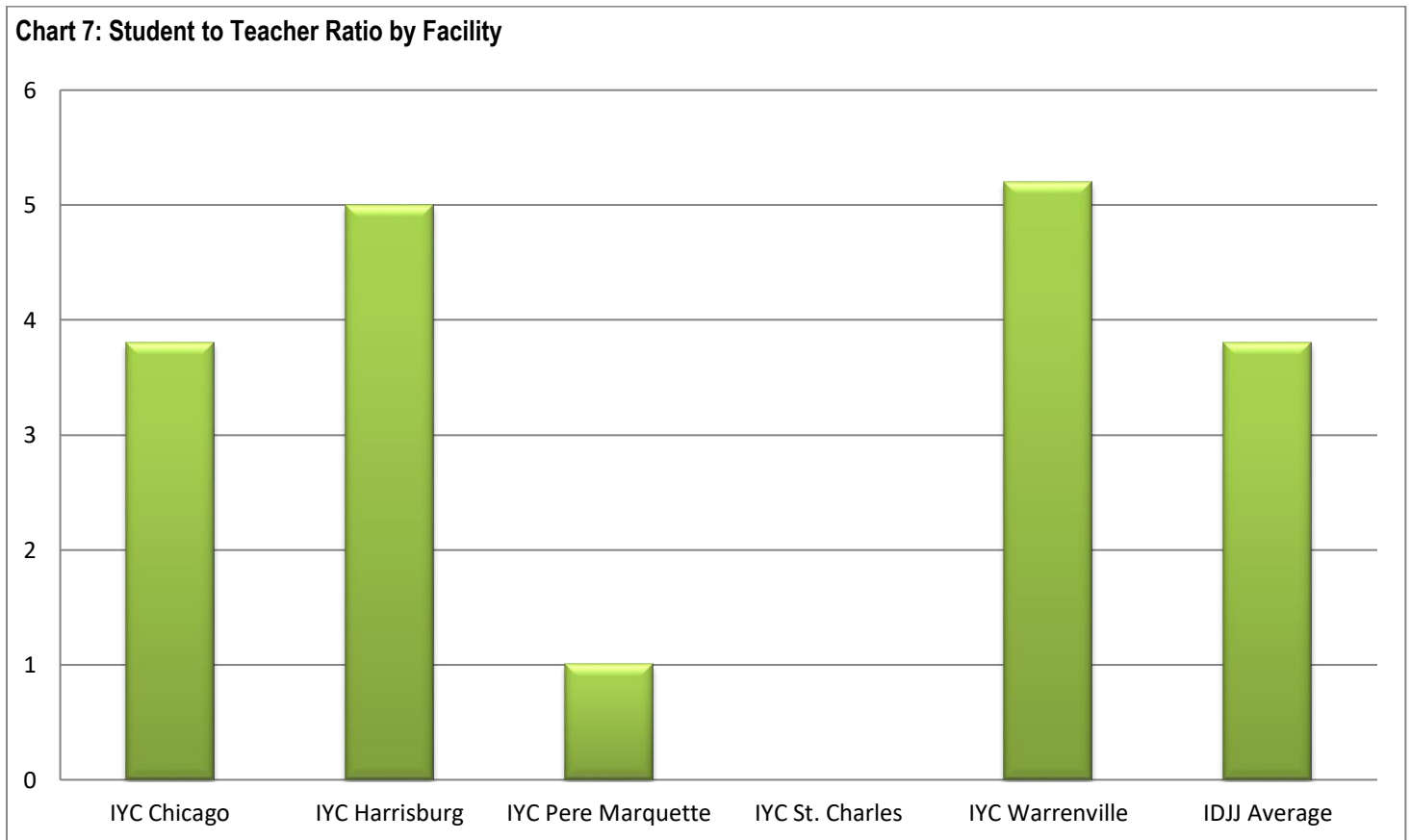
Table 20: Youth in Continuing Education

	Post-Secondary	Collegiate
<i>IYC Chicago</i>	0	0
<i>IYC Harrisburg</i>	0	9
<i>IYC Pere Marquette</i>	0	0
<i>IYC St. Charles</i>	0	0
<i>IYC Warrenville</i>	0	0
<b>IDJJ Total</b>	<b>0</b>	<b>9</b>

Table 21: Number and Percent of Cancelled Whole School Days

	Number	Percent
<i>IYC Chicago</i>	0	0%
<i>IYC Harrisburg</i>	0	0%
<i>IYC Pere Marquette</i>	0	0%
<i>IYC St. Charles</i>	0	0%
<i>IYC Warrenville</i>	0	0%
<b>IDJJ Total</b>	<b>0</b>	<b>0%</b>

Chart 7: Student to Teacher Ratio by Facility



## Section 5: Reportable Incident Data

Table 21a: Number of Reportable Incidents

	7/23	8/23	9/23	10/23	11/23	12/23	1/24	2/24	3/24	4/24	5/24
<b>Chicago</b>	6	11	6	8	9	15	6	8	8	8	5
<b>Harrisburg</b>	37	39	26	32	26	32	39	31	23	34	23
<b>Pere Marquette</b>	6	10	7	12	2	1	5	3	2	2	1
<b>St. Charles</b>	11	23	20	24	24	11	8	4	6	6	0
<b>Warrenville</b>	7	12	7	5	6	6	6	9	15	17	17
<b>IDJJ Total</b>	<b>67</b>	<b>95</b>	<b>66</b>	<b>81</b>	<b>67</b>	<b>65</b>	<b>64</b>	<b>55</b>	<b>54</b>	<b>67</b>	<b>46</b>

Table 21b: Rate of Reportable Incidents per 100 Youth

	7/23	8/23	9/23	10/23	11/23	12/23	1/24	2/24	3/24	4/24	5/24	Avg.
<b>Chicago</b>	21.1	32.5	16.4	23.3	25.1	37.7	15.2	19.7	21.2	18.9	12.6	<b>22.2</b>
<b>Harrisburg</b>	63.2	63.6	47.4	57.3	45.1	54.3	69.1	57.3	42.3	62.5	42.9	<b>55.0</b>
<b>Pere Marquette</b>	58.8	102.0	64.2	94.5	16.3	7.8	40.7	22.2	15.2	15.6	8	<b>40.5</b>
<b>St. Charles</b>	20.7	43.2	36.4	41.0	41.7	27.0	22.6	16.3	23.6	24.2	0	<b>27.0</b>
<b>Warrenville</b>	37.4	54.3	33.8	25.6	37.3	31.1	25.9	33.6	52.6	60.7	50.1	<b>40.2</b>
<b>IDJJ Average</b>	<b>39.7</b>	<b>52.7</b>	<b>37.1</b>	<b>44.8</b>	<b>37.3</b>	<b>37.9</b>	<b>38.4</b>	<b>34.4</b>	<b>33.9</b>	<b>41.3</b>	<b>28.4</b>	<b>38.7</b>

Table 22a: Number of Youth on Youth Assaults

	7/23	8/23	9/23	10/23	11/23	12/23	1/24	2/24	3/24	4/24	5/24
<b>Chicago</b>	2	4	0	2	2	6	3	1	5	1	1
<b>Harrisburg</b>	15	20	10	10	8	10	14	7	5	9	9
<b>Pere Marquette</b>	3	5	1	4	1	0	4	1	1	1	0
<b>St. Charles</b>	4	9	9	6	2	6	3	0	1	2	0
<b>Warrenville</b>	1	0	3	2	2	2	0	3	4	2	2
<b>IDJJ Total</b>	<b>25</b>	<b>38</b>	<b>23</b>	<b>24</b>	<b>15</b>	<b>24</b>	<b>24</b>	<b>12</b>	<b>16</b>	<b>15</b>	<b>12</b>

Table 22b: Rate of Youth on Youth Assaults per 100 Youth

	7/23	8/23	9/23	10/23	11/23	12/23	1/24	2/24	3/24	4/24	5/24	Avg.
<b>Chicago</b>	7.0	11.8	0	5.8	5.6	15.1	7.6	2.5	13.2	2.4	2.5	<b>6.7</b>
<b>Harrisburg</b>	25.6	32.6	18.2	17.9	13.9	17.0	24.8	12.9	9.2	16.5	16.8	<b>18.7</b>
<b>Pere Marquette</b>	29.4	51.0	9.2	31.5	8.1	0	32.5	7.4	7.6	7.8	0	<b>16.8</b>
<b>St. Charles</b>	7.5	16.9	16.4	10.3	3.5	14.7	8.5	0	3.9	8.1	0	<b>8.2</b>
<b>Warrenville</b>	5.3	0	14.5	10.3	12.4	10.4	0.0	11.2	14.0	7.1	5.9	<b>8.3</b>
<b>IDJJ Average</b>	<b>14.8</b>	<b>21.1</b>	<b>12.9</b>	<b>13.3</b>	<b>8.4</b>	<b>14.0</b>	<b>14.4</b>	<b>7.5</b>	<b>10.0</b>	<b>9.2</b>	<b>7.4</b>	<b>12.1</b>

Table 23a: Number of Youth Fights

	7/23	8/23	9/23	10/23	11/23	12/23	1/24	2/24	3/24	4/24	5/24
<b>Chicago</b>	2	3	3	5	4	5	1	3	2	5	2
<b>Harrisburg</b>	14	13	14	17	14	22	25	21	14	21	13
<b>Pere Marquette</b>	2	2	1	5	1	0	0	1	0	1	1
<b>St. Charles</b>	7	11	11	17	17	3	3	2	2	3	0
<b>Warrenville</b>	4	8	2	0	3	2	3	3	10	10	10
<b>IDJJ Total</b>	<b>29</b>	<b>37</b>	<b>31</b>	<b>44</b>	<b>39</b>	<b>32</b>	<b>32</b>	<b>30</b>	<b>28</b>	<b>40</b>	<b>26</b>

Table 23b: Rate of Youth Fights per 100 Youth

	7/23	8/23	9/23	10/23	11/23	12/23	1/24	2/24	3/24	4/24	5/24	Avg.
<b>Chicago</b>	7.0	8.9	8.2	14.6	11.1	12.6	2.6	7.4	5.3	11.8	5.0	<b>8.6</b>
<b>Harrisburg</b>	23.9	21.2	25.5	30.5	24.3	37.4	44.3	38.8	25.7	38.6	24.3	<b>30.4</b>
<b>Pere Marquette</b>	19.6	20.4	9.2	39.4	8.1	0	0	7.4	0	7.8	8	<b>10.9</b>
<b>St. Charles</b>	13.2	20.7	20	29.1	29.6	7.4	8.5	8.1	7.9	12.1	0	<b>14.2</b>
<b>Warrenville</b>	21.4	36.2	9.7	0.0	18.6	10.4	12.9	11.2	35.1	35.7	29.5	<b>20.1</b>
<b>IDJJ Average</b>	<b>17.2</b>	<b>20.5</b>	<b>17.4</b>	<b>24.3</b>	<b>21.7</b>	<b>18.7</b>	<b>19.2</b>	<b>18.8</b>	<b>17.6</b>	<b>24.7</b>	<b>16.0</b>	<b>19.6</b>

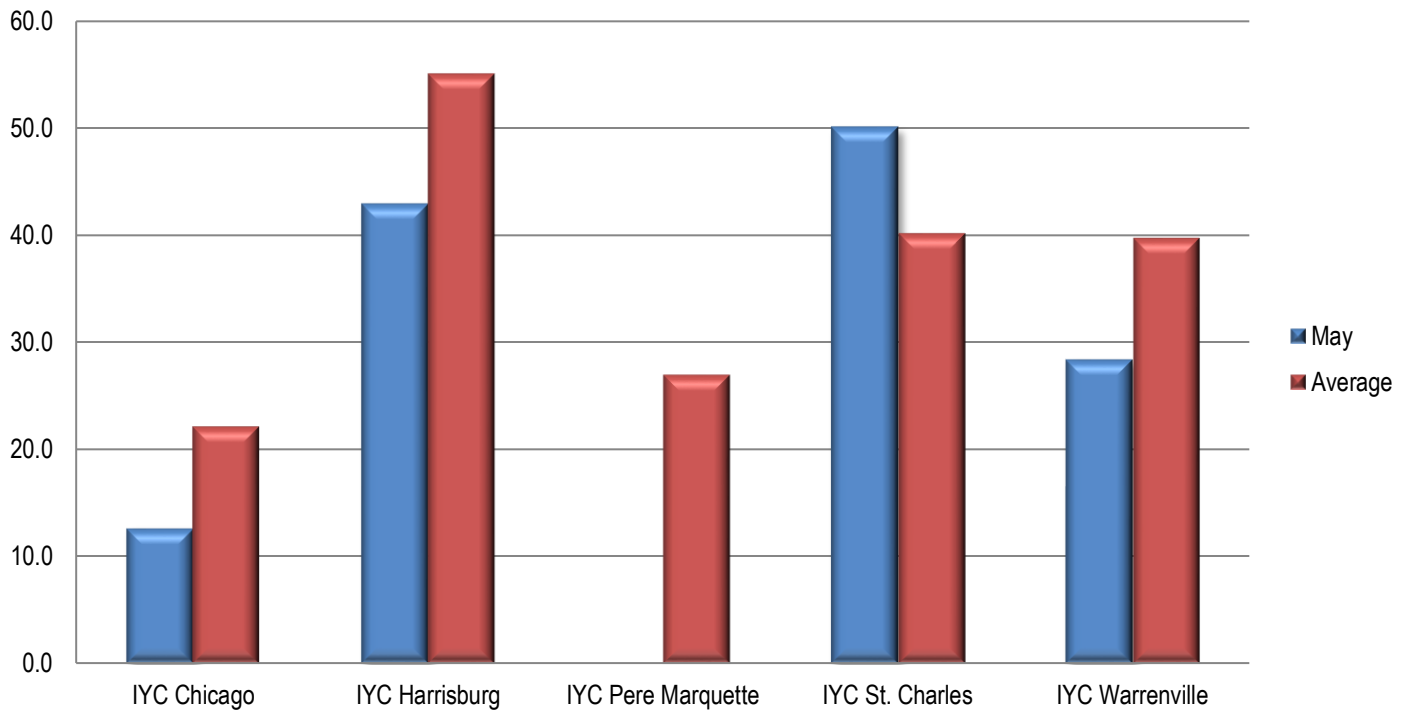
Table 24a: Number of Youth on Staff Assaults

	7/23	8/23	9/23	10/23	11/23	12/23	1/24	2/24	3/24	4/24	5/24
<b>Chicago</b>	2	4	3	1	3	4	2	4	1	2	2
<b>Harrisburg</b>	8	6	2	5	4	0	0	3	4	4	1
<b>Pere Marquette</b>	1	3	5	3	0	1	1	1	1	0	0
<b>St. Charles</b>	0	3	0	1	5	2	2	2	3	1	0
<b>Warrenville</b>	2	4	2	3	1	2	3	3	1	5	5
<b>IDJJ Total</b>	<b>13</b>	<b>20</b>	<b>12</b>	<b>13</b>	<b>13</b>	<b>9</b>	<b>8</b>	<b>13</b>	<b>10</b>	<b>12</b>	<b>8</b>

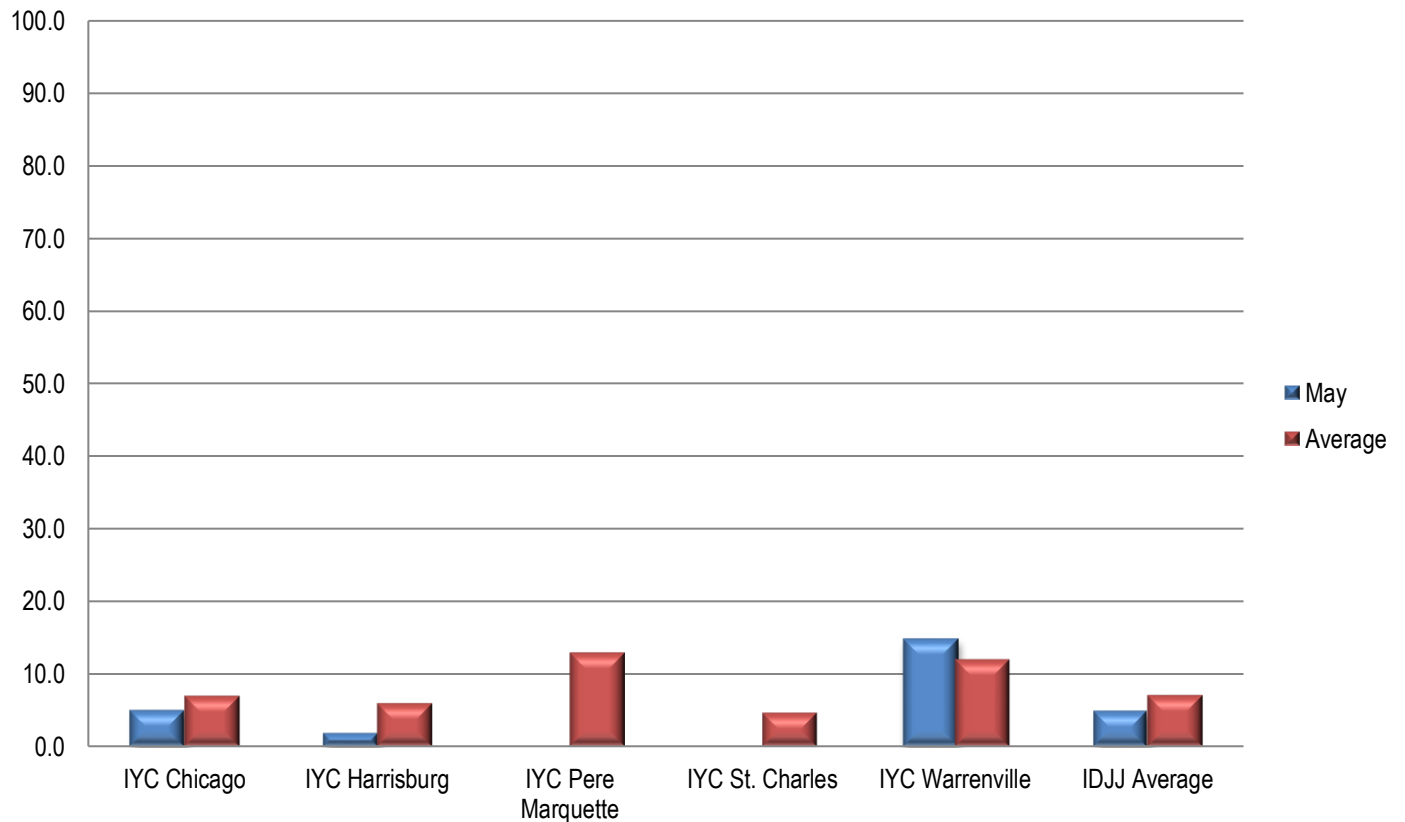
Table 24b: Rate of Youth on Staff Assaults per 100 Youth

	7/23	8/23	9/23	10/23	11/23	12/23	1/24	2/24	3/24	4/24	5/24	Avg.
<b>Chicago</b>	7.0	11.8	8.2	2.9	8.4	10.1	5.1	9.8	2.6	4.7	5.0	<b>6.9</b>
<b>Harrisburg</b>	13.7	9.8	3.6	9.0	6.9	0	0	5.5	7.4	7.4	1.9	<b>5.9</b>
<b>Pere Marquette</b>	9.8	30.6	45.9	23.6	0.0	7.8	8.1	7.4	7.6	0	0	<b>12.8</b>
<b>St. Charles</b>	0	5.6	0	1.7	8.7	4.9	5.6	8.1	11.8	4.0	0	<b>4.6</b>
<b>Warrenville</b>	10.7	18.1	9.7	15.4	6.2	10.4	12.9	11.2	3.5	17.9	14.7	<b>11.9</b>
<b>IDJJ Average</b>	<b>7.7</b>	<b>11.1</b>	<b>6.7</b>	<b>7.2</b>	<b>7.2</b>	<b>5.2</b>	<b>4.8</b>	<b>8.1</b>	<b>6.3</b>	<b>7.4</b>	<b>4.9</b>	<b>7.0</b>

**Chart 9: Rate of Reportable Incidents Per 100 Youth**



**Chart 10: Rate of Youth on Staff Assault Per 100 Youth**



## Section 6: Indicator Data

Table 25: Uses of Chemical Restraints

	7/23	8/23	9/23	10/23	11/23	12/23	1/24	2/24	3/24	4/24	5/24
<b>Chicago</b>	1	0	1	1	0	0	0	0	1	0	0
<b>Harrisburg</b>	2	1	0	1	0	0	1	2	0	2	1
<b>Pere Marquette</b>	0	0	0	1	0	0	0	0	0	0	0
<b>St. Charles</b>	0	3	2	6	10	1	1	1	0	1	0
<b>Warrenville</b>	0	0	0	0	1	1	0	0	0	1	1
<b>IDJJ Total</b>	<b>3</b>	<b>4</b>	<b>3</b>	<b>9</b>	<b>11</b>	<b>2</b>	<b>2</b>	<b>3</b>	<b>1</b>	<b>4</b>	<b>2</b>

Table 26: Uses of Mechanical Restraints

	7/23	8/23	9/23	10/23	11/23	12/23	1/24	2/24	3/24	4/24	5/24
<b>Chicago</b>	1	6	4	1	2	3	1	2	2	2	1
<b>Harrisburg</b>	21	13	2	17	9	10	11	16	6	3	7
<b>Pere Marquette</b>	2	3	4	1	0	2	1	1	1	0	0
<b>St. Charles</b>	1	2	3	4	1	1	0	1	1	1	0
<b>Warrenville</b>	11	13	9	9	4	1	3	2	8	10	4
<b>IDJJ Total</b>	<b>36</b>	<b>37</b>	<b>22</b>	<b>32</b>	<b>16</b>	<b>17</b>	<b>16</b>	<b>22</b>	<b>18</b>	<b>16</b>	<b>12</b>

Uses of chemical and mechanical restraints have varied throughout the year, although the use in the current year is much lower than years past. More important than how frequent they are is whether they are used according to policy and for appropriate reasons.

## Section 7: Confinement Information

Table 28a: Use of Behavioral Holds

	7/23	8/23	9/23	10/23	11/23	12/23	1/24	2/24	3/24	4/24	5/24
<b>Chicago</b>	1	9	12	31	17	34	5	9	8	9	2
<b>Harrisburg</b>	51	50	27	46	44	67	46	54	20	40	32
<b>Pere Marquette</b>	6	3	1	20	1	3	3	3	1	4	2
<b>St. Charles</b>	22	49	54	84	71	14	10	10	18	10	0
<b>Warrenville</b>	43	73	43	29	32	23	39	38	55	73	52
<b>IDJJ Total</b>	<b>123</b>	<b>184</b>	<b>137</b>	<b>209</b>	<b>165</b>	<b>141</b>	<b>103</b>	<b>114</b>	<b>102</b>	<b>136</b>	<b>88</b>

Table 28b: Rate of Behavioral Hold

	7/23	8/23	9/23	10/23	11/23	12/23	1/24	2/24	3/24	4/24	5/24
<b>Chicago</b>	4	27	33	90	47	85	13	22	21	21	5
<b>Harrisburg</b>	87	82	49	82	76	114	82	100	37	74	60
<b>Pere Marquette</b>	59	31	9	157	8	23	24	22	8	31	16
<b>St. Charles</b>	41	92	98	144	123	34	28	41	71	40	0
<b>Warrenville</b>	230	330	208	149	199	119	168	142	193	261	153
<b>IDJJ Average</b>	<b>73</b>	<b>102</b>	<b>77</b>	<b>116</b>	<b>92</b>	<b>82</b>	<b>62</b>	<b>71</b>	<b>64</b>	<b>84</b>	<b>54</b>

Table 28c: Average Length of Behavioral Hold

	7/23	8/23	9/23	10/23	11/23	12/23	1/24	2/24	3/24	4/24	5/24
<b>Chicago</b>	60	45	181	242	623	138	96	81	163	38	105
<b>Harrisburg</b>	127	145	128	167	154	125	145	139	122	145	106
<b>Pere Marquette</b>	83	92	64	122	48	43	53	62	60	73	54
<b>St. Charles</b>	88	69	122	158	155	126	185	94	175	179	-
<b>Warrenville</b>	131	117	113	66	84	97	122	105	127	147	136
<b>IDJJ Average</b>	<b>119</b>	<b>108</b>	<b>125</b>	<b>156</b>	<b>189</b>	<b>122</b>	<b>135</b>	<b>117</b>	<b>137</b>	<b>139</b>	<b>122</b>

Table 29: Use of Crisis Care

	7/23	8/23	9/23	10/23	11/23	12/23	1/24	2/24	3/24	4/24	5/24
<b>Chicago</b>	-	3	-	-	-	2	-	-	-	-	-
<b>Harrisburg</b>	-	-	-	2	-	-	-	-	-	1	-
<b>Pere Marquette</b>	1	-	6	2	-	-	1	2	1	-	-
<b>St. Charles</b>	2	1	-	-	-	-	-	-	5	-	-
<b>Warrenville</b>	9	2	8	10	1	-	1	-	-	-	3
<b>IDJJ Total</b>	<b>12</b>	<b>6</b>	<b>14</b>	<b>14</b>	<b>1</b>	<b>2</b>	<b>2</b>	<b>2</b>	<b>6</b>	<b>1</b>	<b>3</b>

Table 30: Use of Medical Hold

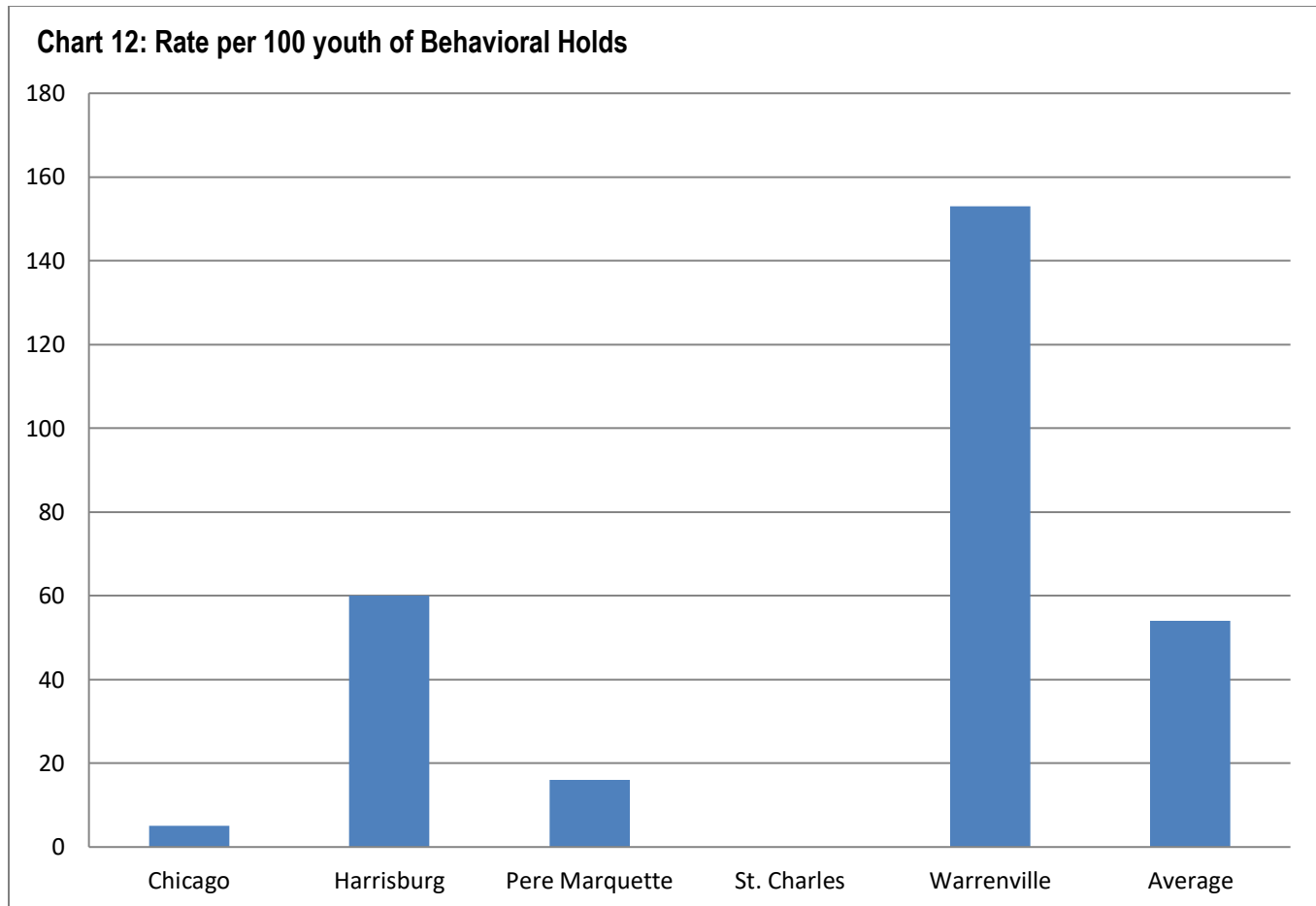
	7/23	8/23	9/23	10/23	11/23	12/23	1/24	2/24	3/24	4/24	5/24
<b>Chicago</b>	-	-	-	-	-	-	-	-	-	-	-
<b>Harrisburg</b>	-	-	-	-	-	-	-	-	-	-	-
<b>Pere Marquette</b>	-	-	-	-	-	-	-	-	-	-	-
<b>St. Charles</b>	-	-	2	2	10	4	7	1	-	1	-
<b>Warrenville</b>	-	-	-	-	3	-	1	-	-	-	-
<b>IDJJ Average</b>	<b>0</b>	<b>0</b>	<b>2</b>	<b>2</b>	<b>13</b>	<b>4</b>	<b>8</b>	<b>1</b>	<b>0</b>	<b>1</b>	<b>0</b>

Table 31: Use of Administrative Hold

	7/23	8/23	9/23	10/23	11/23	12/23	1/24	2/24	3/24	4/24	5/24
<b>Chicago</b>	-	-	7	7	13	-	-	-	-	-	-
<b>Harrisburg</b>	-	80	4	33	12	46	2	-	-	-	-
<b>Pere Marquette</b>	-	-	-	-	-	-	-	-	-	-	-
<b>St. Charles</b>	1	14	2	2	94	31	-	-	-	6	-
<b>Warrenville</b>	162	267	325	83	87	55	89	119	128	31	51
<b>IDJJ Total</b>	<b>163</b>	<b>361</b>	<b>338</b>	<b>125</b>	<b>206</b>	<b>132</b>	<b>91</b>	<b>119</b>	<b>128</b>	<b>37</b>	<b>51</b>

Table 32: Use of Investigative Status

	7/23	8/23	9/23	10/23	11/23	12/23	1/24	2/24	3/24	4/24	5/24
<b>Chicago</b>	-	8	-	-	1	-	-	-	-	-	-
<b>Harrisburg</b>	-	-	-	-	-	-	-	-	-	-	1
<b>Pere Marquette</b>	-	-	-	-	-	-	-	-	-	-	-
<b>St. Charles</b>	-	-	-	-	-	-	-	-	-	-	-
<b>Warrenville</b>	-	2	5	-	-	22	4	4	6	1	-
<b>IDJJ Total</b>	<b>0</b>	<b>10</b>	<b>5</b>	<b>0</b>	<b>1</b>	<b>22</b>	<b>4</b>	<b>4</b>	<b>6</b>	<b>1</b>	<b>1</b>



**Section 8: Aftercare Data**

Table 33: Youth Monitored by Aftercare

	7/23	8/23	9/23	10/23	11/23	12/23	1/24	2/24	3/24	4/24	5/24
<b>Total Number of Youth Assigned to Aftercare</b>	397	420	413	404	412	408	408	406	408	403	400
<b>Youth in Community</b>	180	194	190	192	195	204	208	216	211	208	214
<b>Youth in Facilities</b>	126	134	133	128	136	122	120	110	109	111	104
<b>Youth with Pending Criminal Cases</b>	81	82	75	72	72	71	71	71	75	73	72
<b>Youth with Warrants and Out of State</b>	10	10	15	12	9	11	9	9	13	11	10

Table 34: Caseloads in Aftercare (Average per Specialist)

	7/23	8/23	9/23	10/23	11/23	12/23	1/24	2/24	3/24	4/24	5/24
<b>Youth Assigned to Specialist</b>	7.5	8.0	8.1	8.0	8.3	8.2	8.2	8.2	8.3	8.0	8.0
<b>Youth in Community</b>	4.4	4.7	4.8	4.8	4.9	5.1	5.2	5.4	5.5	5.2	5.4
<b>Youth in Facilities</b>	3.1	3.3	3.3	3.2	3.4	3.1	3.0	2.8	2.8	2.8	2.6

Table 35: Average Specialist Caseload by Aftercare Office – May 2024

	Number of Specialists	Number of Youth	Average Caseload	Number of Youth in Community	Average Caseload in Community
<b>Chicago</b>	7	64	9.1	39	5.6
<b>Chicago Heights</b>	3	17	5.7	17	5.7
<b>Aurora</b>	2	18	9	15	7.5
<b>Rockford</b>	4	32	8	19	4.8
<b>Peoria</b>	4	41	10.3	30	7.5
<b>Belleville</b>	7	57	8.1	36	5.1
<b>Champaign</b>	4	35	8.8	19	4.8
<b>Springfield</b>	2	16	8	11	5.5
<b>Placement</b>	6	38	6.3	28	4.7
<b>IDJJ Total</b>	<b>40</b>	<b>318</b>	<b>8.0</b>	<b>214</b>	<b>5.4</b>

Table 36: Specialist Contact with Youth by Aftercare Office – May 2024

	Number of Overall Contacts	Contacts per Youth	Contacts with Youth in Community	Contacts per Youth in Community
<b>Chicago</b>	119	1.9	114	2.9
<b>Chicago Heights</b>	39	2.3	37	2.2
<b>Aurora</b>	55	3.0	52	3.5
<b>Rockford</b>	127	4.0	90	4.7
<b>Peoria</b>	134	3.3	116	3.9
<b>Belleville</b>	147	2.6	117	3.3
<b>Champaign</b>	126	3.6	120	6.3
<b>Springfield</b>	38	2.4	32	2.9
<b>Placement</b>	161	4.2	151	5.4
<b>IDJJ Total</b>	<b>946</b>	<b>3.0</b>	<b>829</b>	<b>3.9</b>

Table 37a: Parole Revocations



	Parole Revocations Heard	Revocations Approved	Revocations Denied	Hearings Continued
<i>July</i>	18	14	1	3
<i>August</i>	10	5	5	0
<i>September</i>	10	7	3	0
<i>October</i>	6	4	2	0
<i>November</i>	14	11	2	1
<i>December</i>	6	5	1	0
<i>January</i>	12	8	4	0
<i>February</i>	1	1	0	0
<i>March</i>	8	5	3	0
<i>April</i>	9	6	3	0
<i>May</i>	6	4	2	0
<b>IDJJ Average</b>	<b>9.1</b>	<b>6.4</b>	<b>2.4</b>	<b>0.4</b>

Table 37b: Parole Revocation Rates

	Percent of Revocations Approved	Percent of Revocations Denied	Percent of Hearings Continued
<i>July</i>	77.8%	5.6%	16.7%
<i>August</i>	50%	50%	0%
<i>September</i>	70%	30%	0%
<i>October</i>	66.7%	33.3%	0%
<i>November</i>	78.6%	14.3%	7.1%
<i>December</i>	83.3%	16.7%	0%
<i>January</i>	66.7%	33.3%	0%
<i>February</i>	100%	0%	0%
<i>March</i>	62.5%	37.5%	0%
<i>April</i>	66.7%	33.3%	0%
<i>May</i>	66.7%	33.3%	0%
<b>IDJJ Average</b>	<b>71.7%</b>	<b>26.1%</b>	<b>2.2%</b>

With lower numbers of admission for technical parole violators, the numbers of parole revocation hearings held monthly has greatly decreased compared to previous years.

## Section 9: Population Stock/Flow

Table 38: Institutional Stock/Flow

	7/23	8/23	9/23	10/23	11/23	12/23	1/24	2/24	3/24	4/24	5/24
<b>Number of Admissions per Month</b>	33	50	35	32	34	22	32	19	36	31	25
<b>Percent of Admissions Parole Violators</b>	21.2%	12%	5.7%	12.5%	11.8%	9.1%	18.8%	5.3%	13.9%	19.4%	8%
<b>Number of Facility Exits per Month</b>	32	43	30	32	33	40	33	26	34	25	32
<b>Percent of Exits to Aftercare Supervision</b>	96.9%	97.7%	90%	84.4%	84.8%	87.5%	90.9%	100%	97.1%	88%	93.8%

Table 39: Aftercare Stock/Flow

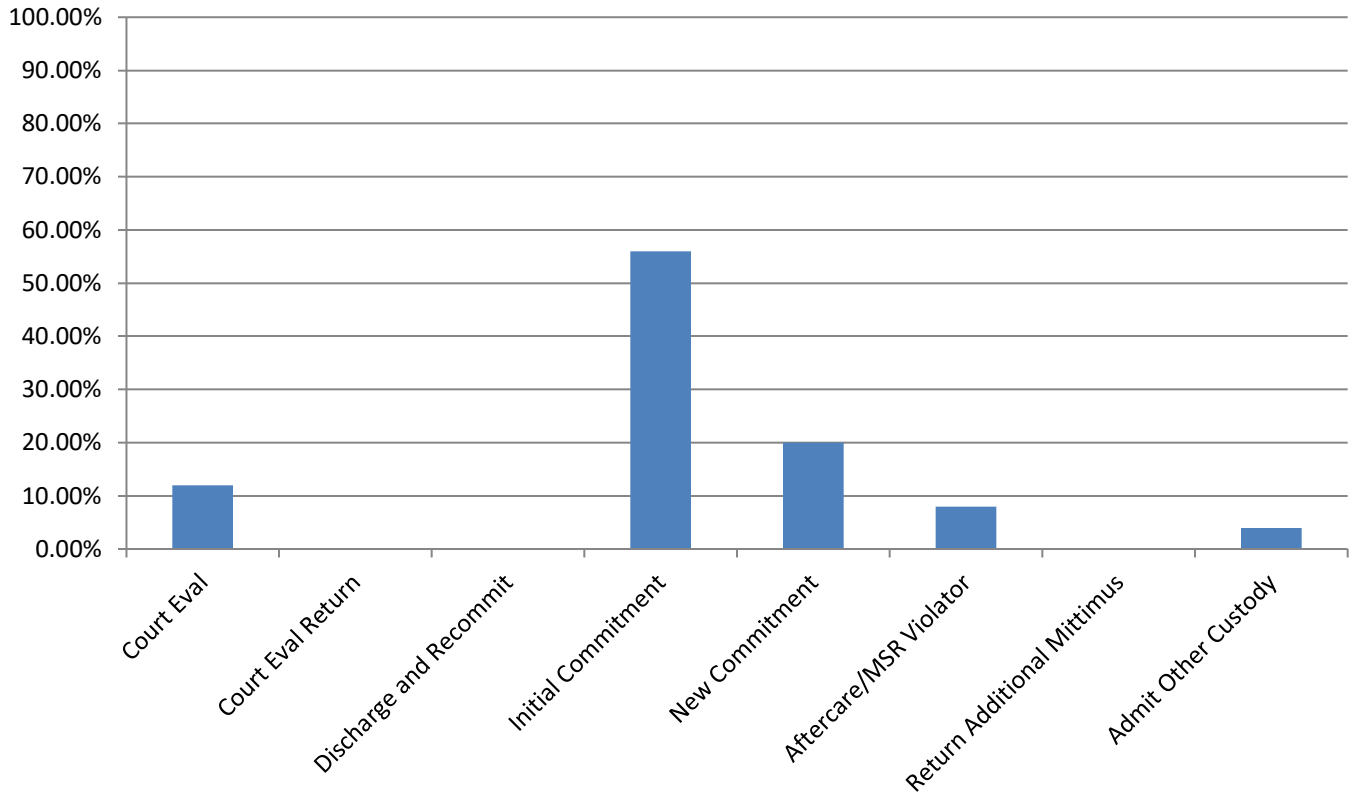
	7/23	8/23	9/23	10/23	11/23	12/23	1/24	2/24	3/24	4/24	5/24
<b>Number of New Supervised Youth</b>	31	43	28	27	30	35	32	27	34	25	34
<b>Number of Exits from Aftercare</b>	23	17	24	21	16	20	16	16	22	21	18

Table 40: Admissions to Facilities by Type

	May 2024	
	Number	Percent
<b>Court Evaluation</b>	3	12%
<b>Court Evaluation Return</b>	0	0%
<b>Discharged and Recommitted</b>	0	0%
<b>Initial Commitment</b>	14	56%
<b>New Commitment</b>	5	20%
<b>Aftercare/MSR Violator</b>	2	8%
<b>Return Additional Mittimus</b>	0	0%
<b>Admit from Other Custody</b>	1	4%
<b>Total</b>	<b>25</b>	

The decrease in DJJ populations is a direct effect of both decreasing court admissions, decreasing admissions for technical violations, and decreases in length of stay during the fiscal year. Additionally, rates and numbers of discharges from Aftercare have increased as well, which has helped those numbers stay lower as well, which provides fewer youth to be readmitted into facilities. Looking at the types of admissions to DJJ, a greater percent of youth are initial commitments than in previous years.

**Chart 13: Admission Types to Facility, May 2024**



## Section 10: TRD Data for May 2024

Table 41: Adjustments by Facility

	Reductions	Extensions
<i>IYC Chicago</i>	91	5
<i>IYC Harrisburg</i>	93	17
<i>IYC Pere Marquette</i>	56	3
<i>IYC St. Charles</i>	12	1
<i>IYC Warrenville</i>	92	17
<b>Total</b>	<b>344</b>	<b>43</b>

Table 42: Types of Adjustments Used

	CHI	HRG	PER	STC	WRV	DJJ Overall
<i>BARJ Reduction</i>	0	1	0	0	0	<b>1</b>
<i>Delinquent Program Reduction</i>	3	0	6	0	5	<b>14</b>
<i>Ed/Voc Reduction</i>	16	8	23	0	47	<b>94</b>
<i>Grade Level Reduction</i>	4	5	1	0	4	<b>14</b>
<i>JSO Completion Reduction</i>	0	0	0	0	0	<b>0</b>
<i>No Maj. Sanc. Reductions</i>	12	16	2	0	11	<b>41</b>
<i>Other Tx Reduction</i>	0	3	2	0	1	<b>6</b>
<i>SA Completion Reduction</i>	5	2	4	1	5	<b>17</b>
<i>YASI Goal Reduction</i>	51	58	18	11	19	<b>157</b>
<i>Discipline Extension</i>	5	17	3	1	17	<b>43</b>

Chart 14: Types of Adjustments used by Agency

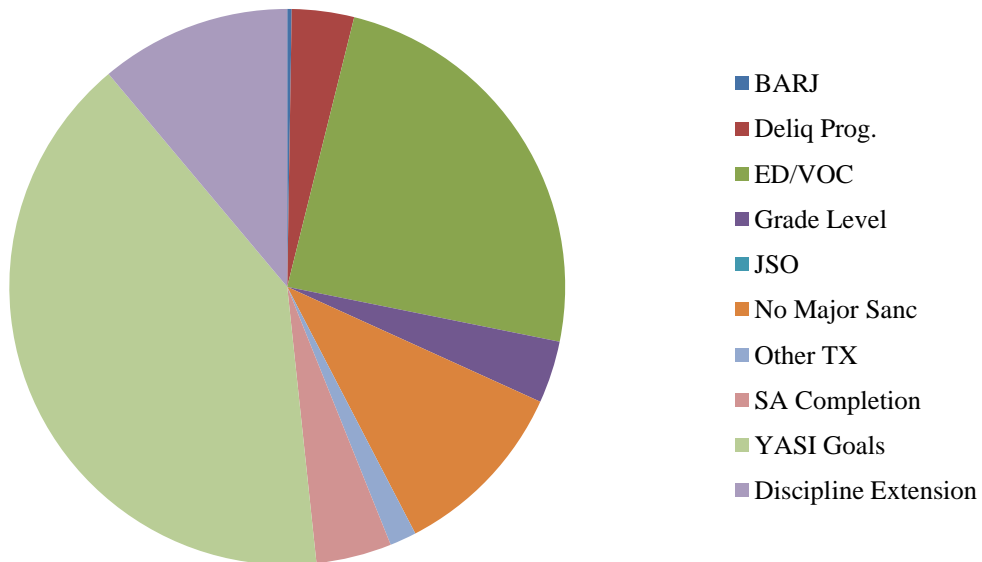


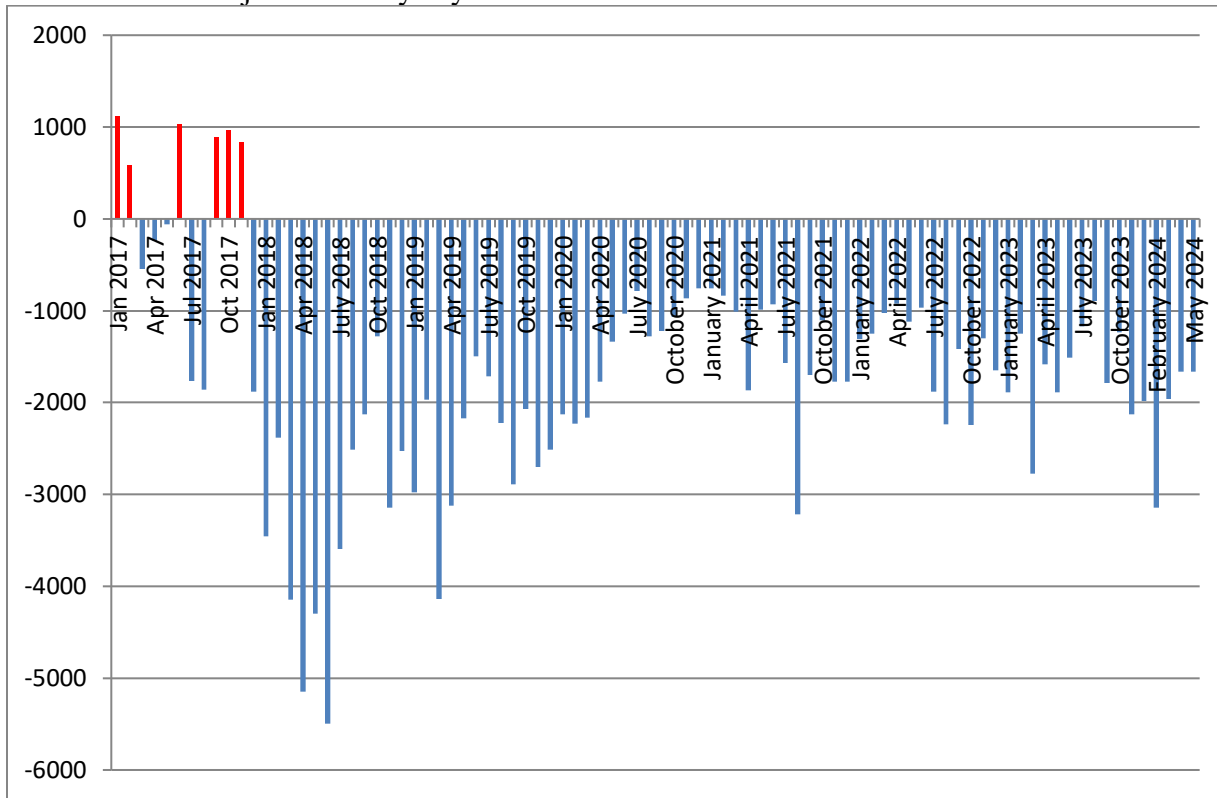
Table 45: Frequency of Discipline Extensions

	7/23	8/23	9/23	10/23	11/23	12/23	1/24	2/24	3/24	4/24	5/24
<b><i>IYC Chicago</i></b>	16	13	10	26	8	19	33	24	4	14	5
<b><i>IYC Harrisburg</i></b>	22	50	15	45	19	32	29	25	9	22	17
<b><i>IYC Pere Marquette</i></b>	13	16	0	20	19	10	1	6	2	1	3
<b><i>IYC St. Charles</i></b>	7	10	36	21	47	22	7	2	0	17	1
<b><i>IYC Warrenville</i></b>	4	15	5	4	1	1	3	2	6	14	17
<b>Total</b>	<b>62</b>	<b>104</b>	<b>66</b>	<b>116</b>	<b>94</b>	<b>84</b>	<b>73</b>	<b>59</b>	<b>21</b>	<b>68</b>	<b>43</b>

Table 46: Average Length of Discipline Extension

	7/23	8/23	9/23	10/23	11/23	12/23	1/24	2/24	3/24	4/24	5/24
<b><i>IYC Chicago</i></b>	10	14	6	8	12	11	10	9	4	7	9
<b><i>IYC Harrisburg</i></b>	10	10	6	17	7	14	5	7	6	11	5
<b><i>IYC Pere Marquette</i></b>	10	6	0	7	7	6	4	7	10	2	3
<b><i>IYC St. Charles</i></b>	13	7	8	11	10	10	24	4	0	8	5
<b><i>IYC Warrenville</i></b>	16	7	5	7	5	3	12	15	22	8	7
<b>Average</b>	<b>11</b>	<b>9</b>	<b>7</b>	<b>12</b>	<b>9</b>	<b>11</b>	<b>9</b>	<b>8</b>	<b>10</b>	<b>9</b>	<b>6</b>

Summed Total Adjustment Days by Month



**Section 11: YASI**

Table 47: YASI Pre-Screens: May 2024

	<b>Legal Risk</b>	<b>Social Risk</b>	<b>Protective</b>	<b>Overall Risk</b>
<i>High</i>	43	26	3	44
<i>Moderate</i>	10	24	27	8
<i>Low</i>	1	4	24	2
<b>Total</b>	<b>54</b>	<b>54</b>	<b>54</b>	<b>54</b>

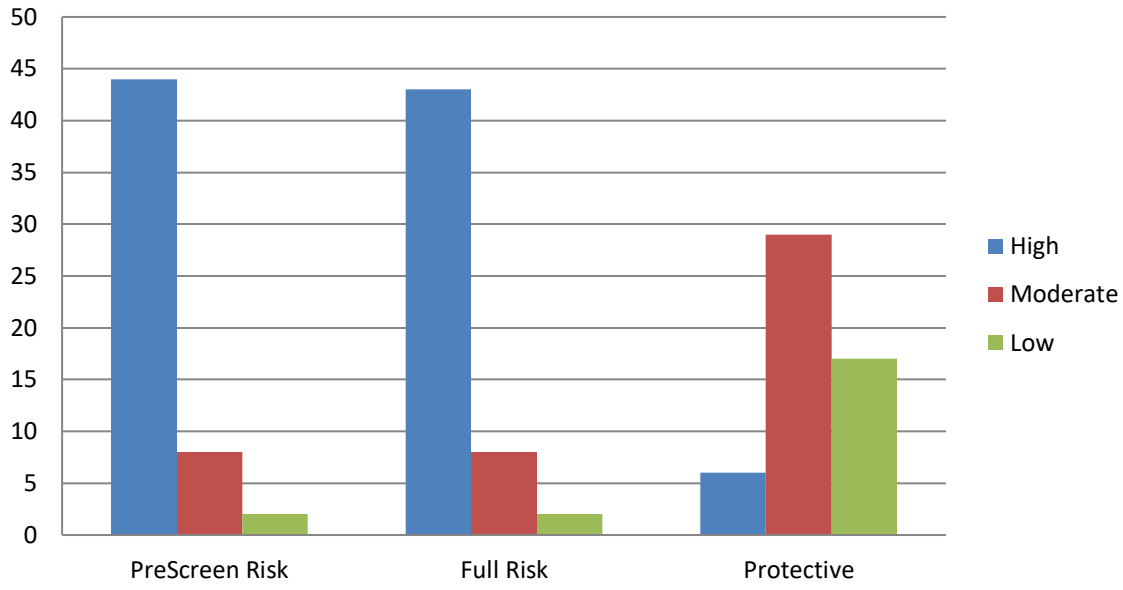
Table 48: YASI Full Assessments: Risk

	<b>Dynamic</b>	<b>Static</b>	<b>Overall</b>
<i>Very High</i>	6	-	-
<i>High</i>	8	49	43
<i>Moderate-High</i>	19	-	-
<i>Moderate</i>	15	0	8
<i>Low-Moderate</i>	3	-	-
<i>Low</i>	2	4	2
<i>None</i>	0	0	0
<b>Total</b>	<b>53</b>	<b>53</b>	<b>53</b>

Table 49: YASI Full Assessments: Protective

	<b>Dynamic</b>	<b>Static</b>	<b>Overall</b>
<i>Very High</i>	2	-	-
<i>High</i>	3	10	6
<i>Moderate-High</i>	18	-	-
<i>Moderate</i>	17	3	29
<i>Low-Moderate</i>	5	-	-
<i>Low</i>	7	9	17
<i>None</i>	1	31	1
<b>Total</b>	<b>53</b>	<b>53</b>	<b>53</b>

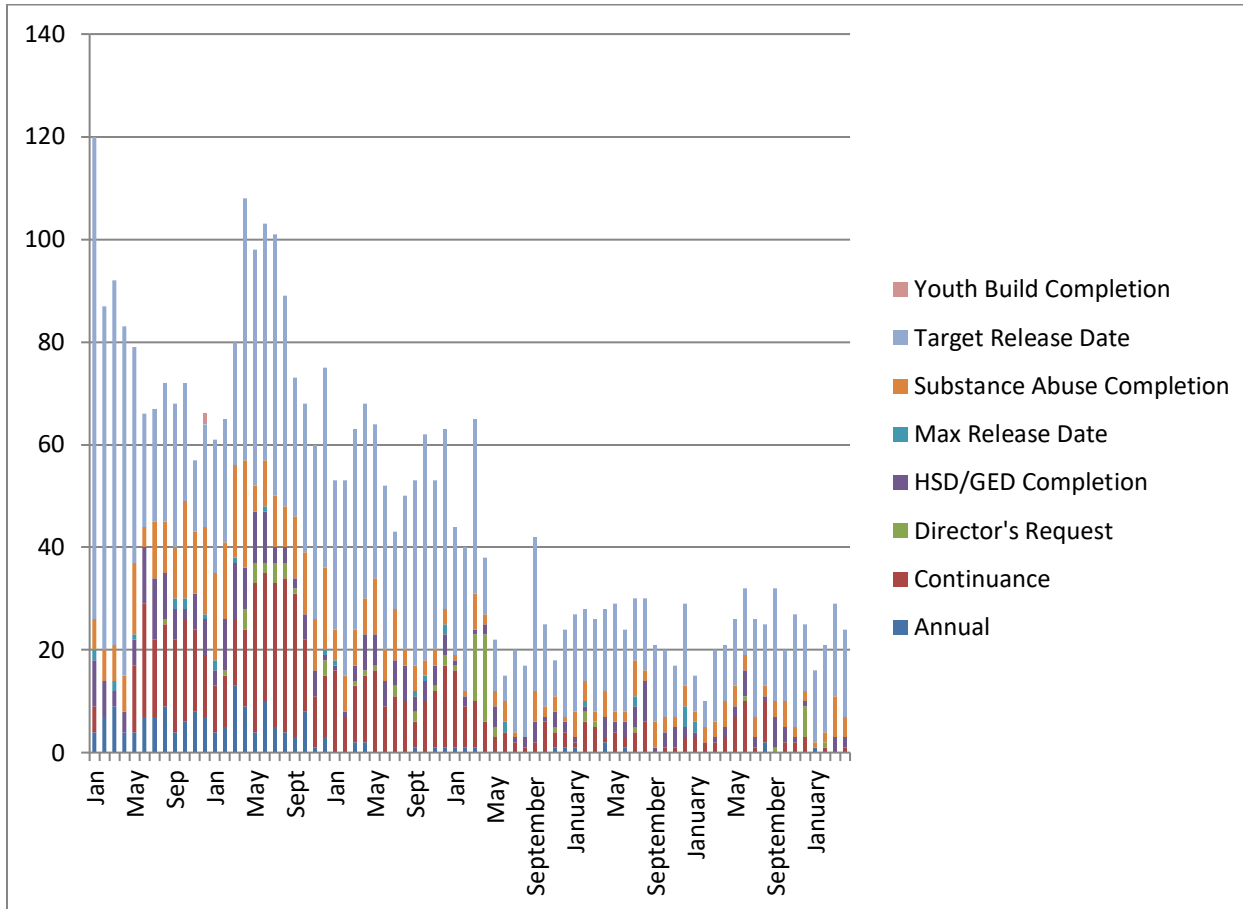
**Chart 16: Risk and Protective Levels of Youth**





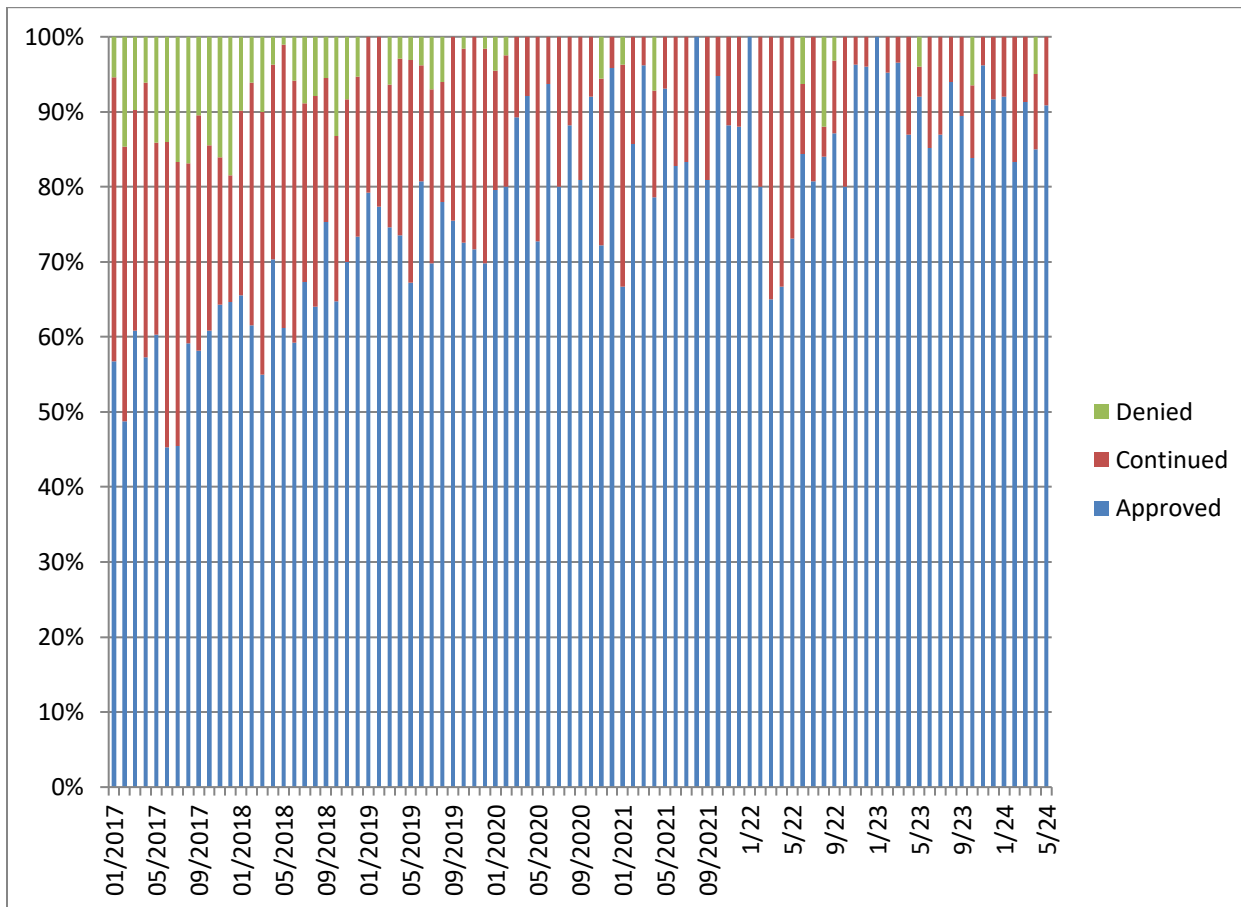
## Release Reviews

### Reviews by Type per Month



	Annual	Cont.	Director's Request	HSD/GED	Max Release Date	Substance Abuse	Target Release Date	<b>Total</b>
July	3	2	3	3	0	2	11	<b>24</b>
August	0	2	7	1	0	6	18	<b>34</b>
September	1	1	0	2	0	1	16	<b>21</b>
October	0	3	1	2	0	2	23	<b>31</b>
November	1	2	6	0	0	2	15	<b>26</b>
December	0	1	5	0	0	3	15	<b>24</b>
January	0	1	0	1	2	0	21	<b>25</b>
February	0	3	0	0	0	3	12	<b>18</b>
March	0	4	0	2	0	1	16	<b>23</b>
April	1	0	0	0	0	1	18	<b>20</b>
May	1	4	1	2	0	0	16	<b>24</b>

Percent of Release Reviews by Outcome and Month



## Demographic Profile for May 31st, 2024

Sex	Institutions		Aftercare	
	Number	Percent	Number	Percent
Male	152	96.2%	280	95.6%
Female	6	3.8%	13	4.4%

Age	Institutions		Aftercare	
	Number	Percent	Number	Percent
Average Age	17.5		18.0	
16 & Under	55	34.8%	83	28.3%
17 to 20	102	64.6%	203	69.3%
20.5 & Over	1	0.6%	6	2.1%

Race/Ethnicity	Institutions		Aftercare	
	Number	Percent	Number	Percent
White	22	13.9%	61	20.8%
Black	114	72.2%	203	69.2%
Hispanic	16	10.1%	19	6.5%
Asian/Pacific Islander	0	0%	0	0%
Multi/Biracial	6	3.8%	10	3.4%

Committing Counties <sup>1</sup>	Institutions		Aftercare	
	Number	Percent	Number	Percent
Cook	47	29.7%	74	25.3%
Collar Counties	11	7.0%	19	6.5%
Metro-East	11	7.0%	13	4.4%
Central	58	36.7%	101	34.5%
Southern	10	6.3%	19	6.5%
Northern	21	13.3%	51	17.4%
Out of State	0	0%	15	5.1%

<sup>1</sup> Committing Counties: Cook = Cook; Collar Counties = DuPage, Kane, Lake, McHenry, Will; Metro East Counties = Madison, St. Clair; Central IL Counties = Adams, Bond, Brown, Calhoun, Cass, Champaign, Christian, Clark, Coles, Crawford, Cumberland, Dewitt, Douglas, Edgar, Effingham, Fayette, Ford, Fulton, Greene, Hancock, Henderson, Iroquois, Jasper, Jersey, Knox, Livingston, Logan, McDonough, McLean, Macon, Macoupin, Marshall, Mason, Menard, Montgomery, Morgan, Moultrie, Peoria, Piatt, Pike, Sangamon, Schuyler, Scott, Shelby, Stark, Tazewell, Vermillion Warren, Woodford; South IL Counties = Alexander, Clay, Clinton, Edwards, Franklin, Gallatin, Hamilton, Hardin, Jackson, Jefferson, Johnson, Lawrence, Marion, Massac, Monroe, Perry, Pope, Pulaski, Randolph, Richland, Saline, Union, Wabash, Washington, Wayne, White, Williamson; North, IL Counties = Boone, Bureau, Carroll, DeKalb, Grundy, Henry, Jo-Daviess, Kankakee, Kendall, LaSalle, Lee, Mercer, Ogle, Putnam, Rock Island, Stephenson, Whiteside, Winnebago; Other = Out of State

Offense Class	Institutions		Aftercare	
	Number	Percent	Number	Percent
Murder	22	13.9%	3	1.0%
Class X Felony	53	33.5%	63	21.5%
Class 1 Felony	35	22.2%	69	23.5%
Class 2 Felony	32	20.3%	105	35.8%
Class 3 Felony	13	8.2%	16	5.5%
Class 4 Felony	3	1.9%	21	7.2%

Offense Class by Race	Black	White	Hispanic	Bi/Multiracial
Murder	17	3	5	0
Class X Felony	87	17	11	1
Class 1 Felony	78	17	4	5
Class 2 Felony	90	29	11	7
Class 3 Felony	15	9	3	2
Class 4 Felony	20	3	0	1
<b>Total</b>	<b>307</b>	<b>68</b>	<b>34</b>	<b>16</b>

*This table provides a summary of all youth in DJJ (both facilities and Aftercare) relating to their race and holding offense crime class. The numbers in the table and the raw number of youth in a category.*

Prefix	Institutions		Aftercare	
	Number	Percent	Number	Percent
Court Evaluation	4	2.5%	0	0%
Delinquent	59	37.3%	250	85.3%
Extended Jurisdiction	8	5.1%	12	4.1%
Felon	59	37.3%	2	0.7%
First Degree Murderer	10	6.3%	2	0.7%
Habitual Juvenile	2	1.3%	0	0%
Violent Juvenile	16	10.1%	12	4.1%
From Other State	0	0%	15	5.1%

## Aftercare Completion – May 2024

### Characteristics of Youth at Exiting Aftercare

*Youth exiting aftercare are youth that are being discharged from IDJJ custody and youth that are entering an IDJJ facility*

Sex	Aftercare Exits	
	Number	Percent
Male	24	96%
Female	1	4%

Age	Aftercare Exits	
	Number	Percent
Average Age	17.9	
16 & Under	8	32%
17 to 20	15	60%
20.5 & Over	2	8%

Committing Counties <sup>2</sup>	Aftercare Exits	
	Number	Percent
Cook	5	20%
Collar Counties	1	4%
Metro-East	1	4%
Central	11	44%
Southern	1	4%
Northern	6	24%
Out of State	0	0%

Race/Ethnicity	Aftercare Exits	
	Number	Percent
White	7	28%
Black	16	64%
Hispanic	2	8%
Asian/Pacific Islander	0	0%
Multi/Biracial	0	0%

<sup>2</sup> Committing Counties: Cook = Cook; Collar Counties = DuPage, Kane, Lake, McHenry, Will; Metro East Counties = Madison, St. Clair; Central IL Counties = Adams, Bond, Brown, Calhoun, Cass, Champaign, Christian, Clark, Coles, Crawford, Cumberland, Dewitt, Douglas, Edgar, Effingham, Fayette, Ford, Fulton, Greene, Hancock, Henderson, Iroquois, Jasper, Jersey, Knox, Livingston, Logan, McDonough, McLean, Macon, Macoupin, Marshall, Mason, Menard, Montgomery, Morgan, Moultrie, Peoria, Piatt, Pike, Sangamon, Schuyler, Scott, Shelby, Stark, Tazewell, Vermillion Warren, Woodford; South IL Counties = Alexander, Clay, Clinton, Edwards, Franklin, Gallatin, Hamilton, Hardin, Jackson, Jefferson, Johnson, Lawrence, Marion, Massac, Monroe, Perry, Pope, Pulaski, Randolph, Richland, Saline, Union, Wabash, Washington, Wayne, White, Williamson; North, IL Counties = Boone, Bureau, Carroll, DeKalb, Grundy, Henry, Jo-Daviess, Kankakee, Kendall, LaSalle, Lee, Mercer, Ogle, Putnam, Rock Island, Stephenson, Whiteside, Winnebago; Other = Out of State

Offense Class	Aftercare Exits	
	Number	Percent
Murder	1	4%
Class X Felony	8	32%
Class 1 Felony	2	8%
Class 2 Felony	8	32%
Class 3 Felony	4	16%
Class 4 Felony	2	8%

Prefix	Aftercare Exits	
	Number	Percent
Court Evaluation	0	0%
Delinquent	20	80%
Extended Jurisdiction	2	8%
Felon	3	12%
First Degree Murderer	0	0%
Habitual Juvenile	0	0%
Violent Juvenile	0	0%
From Other State	0	0%

Discharge Reason	Aftercare Exits	
	Number	Percent
Admitted to Institution	9	36%
Aftercare Discharge	8	32%
Adult Sentence Discharge	4	16%
Transfer to Adult Parole	1	4%
Court Ordered Discharge	1	4%
Discharged from Illinois Custody	0	0%
Statutory Discharge	2	8%
Death	0	0%
Vacated Commitment Order	0	0%
Expiration of Sentence	0	0%

## Youth Outcomes at Discharge from Aftercare – May 2024

These are youth outcomes are for youth discharging Aftercare

